

Product: TRACK-TYPE TRACTOR

Model: D9R TRACK-TYPE TRACTOR 7TL

Configuration: D9R Track-Type Tractor Differential Steering 7TL00852-UP (MACHINE) POWERED BY 3408 Engine

Disassembly and Assembly D9R Track-Type Tractor Power Train

Media Number -M0097695-00

Publication Date -01/08/2018

Date Updated -23/08/2018

i07380491

Final Drive Planetary Carrier (In Chassis) - Remove

SMCS - 4092-011

Removal Procedure

Table 1

Required Tools			
Tool	Part Number	Part Description	Qty
A	5P-8622	Shackle	1
	151-2816	Plate	1
	142-6893	Adjustable Hook Gp	1
	5P-8732	Adapter	1
	1D-4609	Bolt	3
	2J-3505	Full Nut	3
	5H-1504	Hard Washer	6
B	6V-3170	Double Acting Cylinder	1
	6V-3009	Crossbar	1
	9U-6600	Hand Hydraulic Pump	1
C	1P-1837	Bearing Puller Adapter	2
D	1P-0520	Driver Group	1

Start By:

- a. Remove the axles.

Note: Retainer (3), ring (4), spiral lock ring (5), cover (6), and bolts (7) and (9) were removed when the axles were removed.

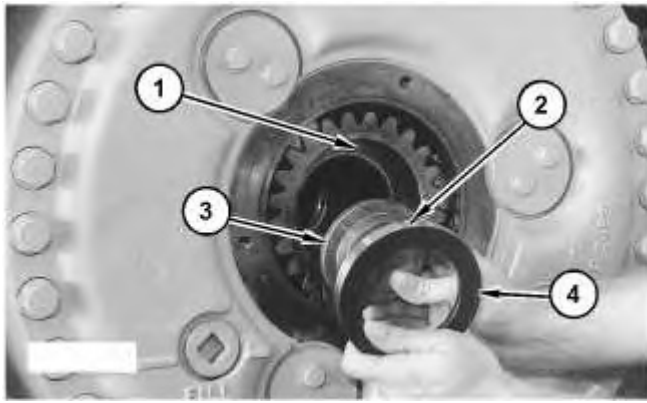


Illustration 1

g06301000

1. Install retainer (3). Make an alignment of notch (2) in ring (4) with dowel (1). Install ring (4).

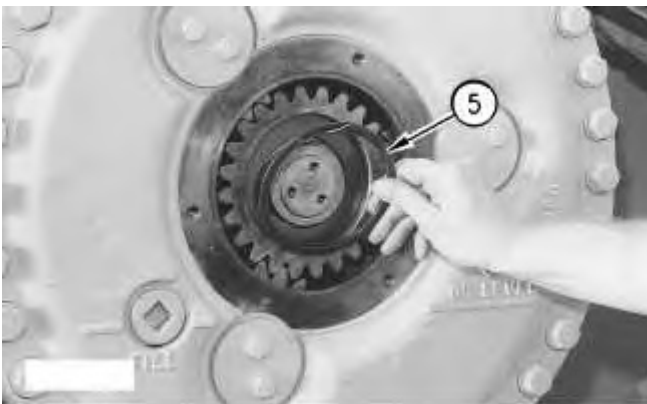


Illustration 2

g00627112

2. Install spiral lockring (5).



Illustration 3

g06301009

- Put cover (6) in position on the final drive.

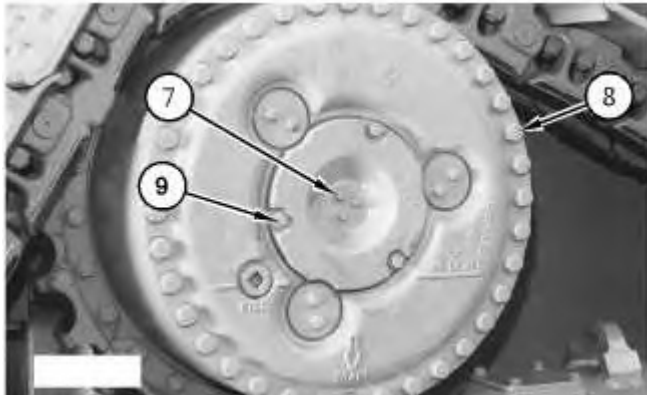


Illustration 4

g06301027

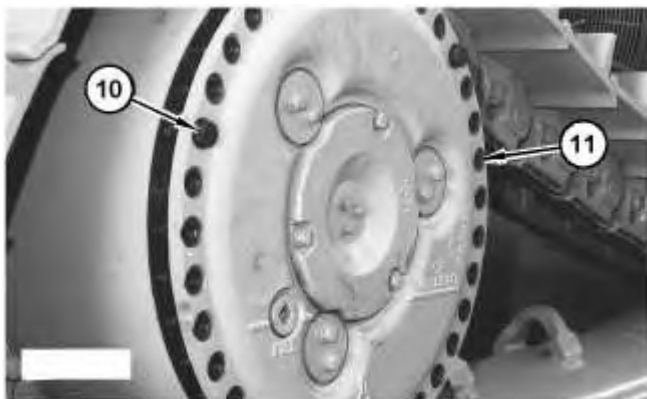
- Install three bolts (7). Install three bolts (9) that hold cover (6) to the final drive. The cover, the spiral locking, the retainer, and the ring must be installed to hold both carriers together during the removal. One carrier may be free to drop if this procedure is not followed.
- Remove three bolts (8) that are an even distance from each other on the final drive.



Illustration 5

g06301038

- Install three bolts that are 3/4 inch - 10 NC x 3.5 inch in the final drive. Remove the remainder of bolts (8).



7. Use a pry bar to move out planetary carrier (11). Move out planetary carrier (11).

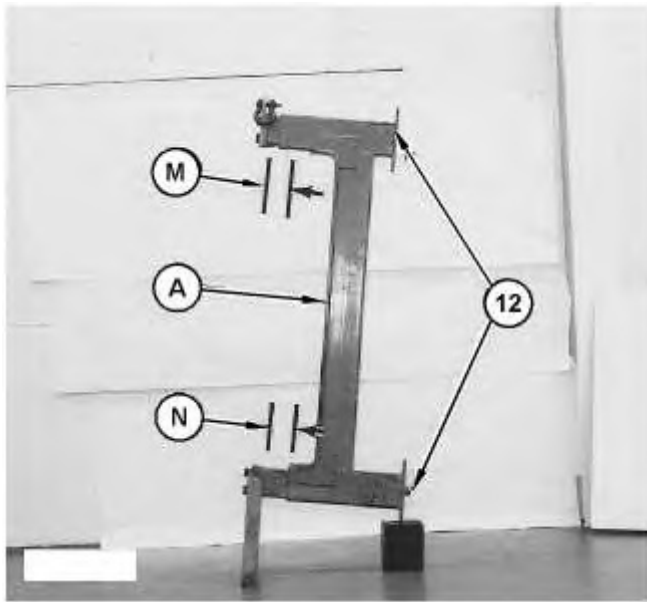


Illustration 7

g06301063

Note: Make sure that the short support of Tooling (A) is on the bottom and that the long support is on the top when Distances (M) and (N) are made.

8. Make an adjustmentbolts (12) on Tooling (A) so that Distance (M) is 85 mm (3.35 inch) and Distance (N) is 176 mm (6.93 inch).

Note: Sun gear (13) is free to fall when the planetary carriers are removed.

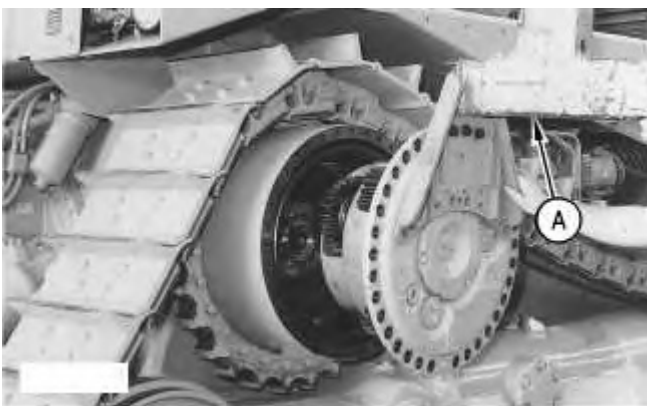


Illustration 8

g00645532

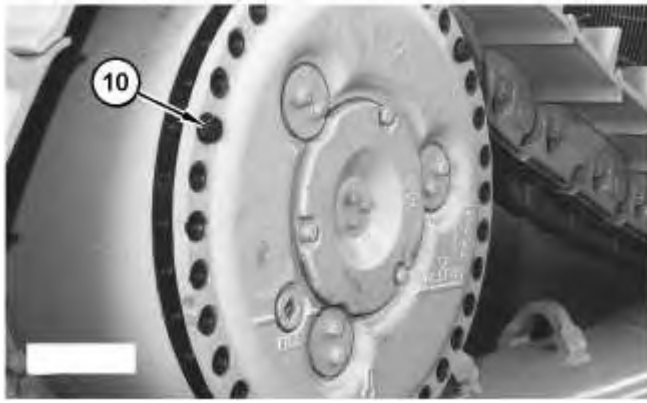


Illustration 9

g06301086

9. Fasten an appropriate lifting device to install Tooling (A) on the planetary carrier, as shown. Remove bolts (10) and remove the planetary carriers from the final drive. The weight of the planetary carrier is approximately 399 kg (880 lb).

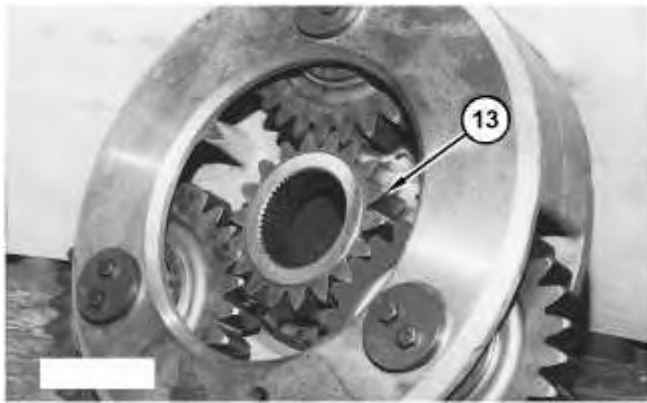


Illustration 10

g06301104

10. Remove sun gear (13) from the planetary carrier.

Note: To disassemble the planetary carriers, see Disassembly and Assembly, "Final Drive - Disassemble".

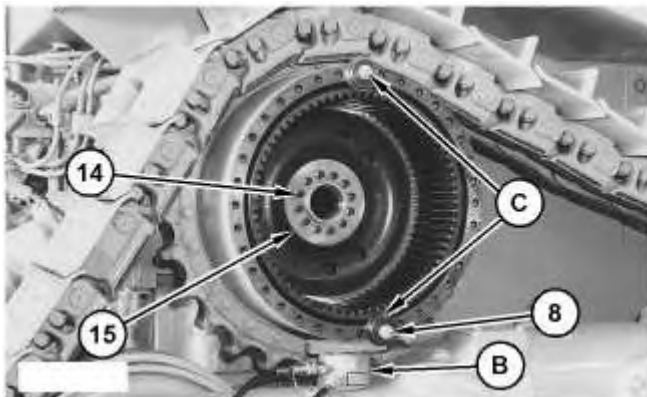


Illustration 11

g06301110

11. Install Tooling (B) under the final drive hub to hold the drive hub in position when the retainer is removed. Install Tooling (C).

Note: Ensure that Tooling (B) and that Tooling (C) hold the hub and the ring gear when the retainer is removed. Use bolts (8) that hold the planetary carriers in place to install Tooling (C).

12. Remove bolts (14) and retainer (15) from the final drive.

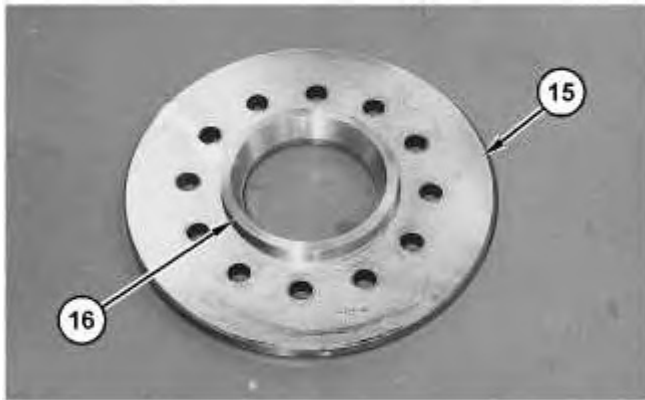


Illustration 12

g06301114

13. Use Tooling (D) and a suitable press to remove ring (16) from retainer (15).

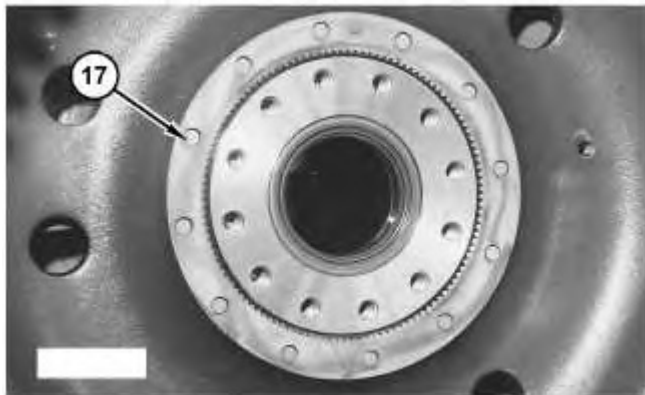


Illustration 13

g06301116

14. Use a magnet to remove pins (17) from the hub.
-

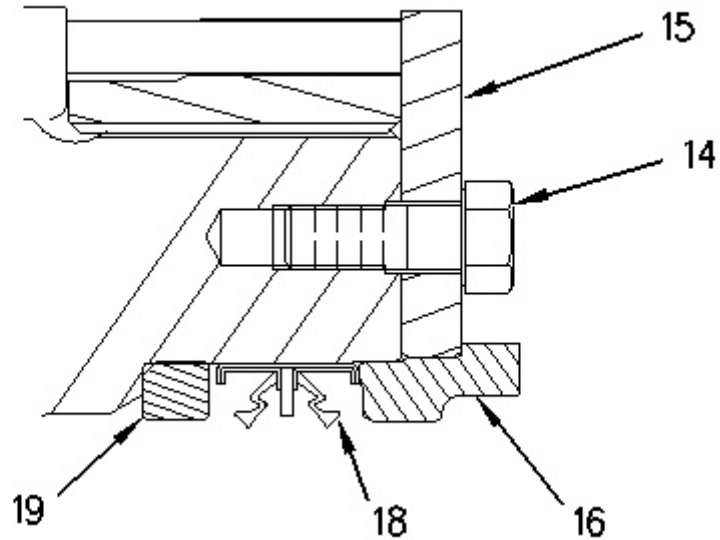


Illustration 14

g00627127

15. Remove lip seal (18) from the hub.

Installation Procedure

Table 2

Required Tools			
Tool	Part Number	Part Description	Qty
A	5P-8622	Shackle	1
	151-2816	Plate	1
	142-6893	Adjustable Hook Gp	1
	5P-8732	Adapter	1
	1D-4609	Bolt	3
	2J-3505	Full Nut	3
	5H-1504	Hard Washer	6
B	6V-3170	Double Acting Cylinder	1
	6V-3009	Crossbar	1
	9U-6600	Hand Hydraulic Pump	1
C	1P-1837	Bearing Puller Adapter	2
D	1P-0520	Driver Group	1

Thank you so much for reading.
Please click the “Buy Now!”
button below to download the
complete manual.



After you pay.

You can download the most
perfect and complete manual in
the world immediately.

Our support email:

ebooklibonline@outlook.com