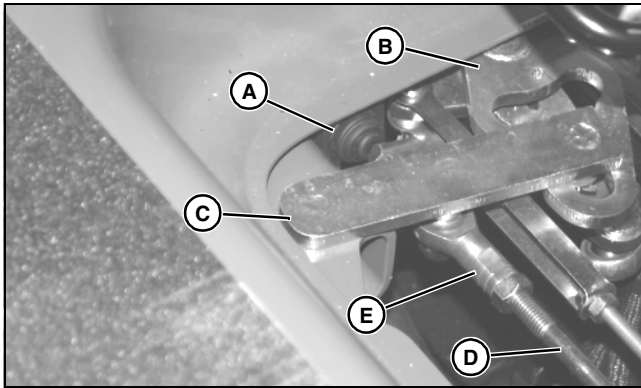


BRAKES TESTS AND ADJUSTMENTS

Brake Switch Adjustment

Inspection:

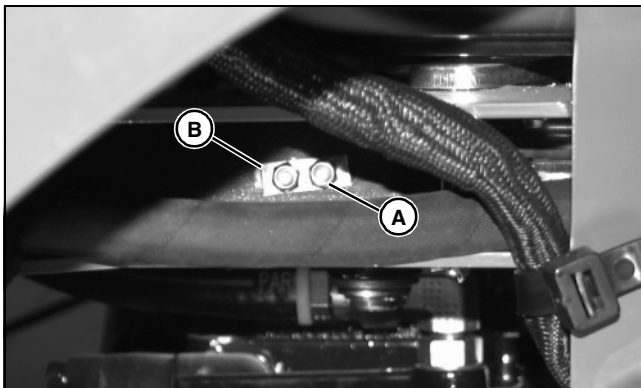
1. Park machine on level surface.
2. Unlock park brake.
3. Disconnect battery negative (-) cable.
4. Open service hatch.
5. Inspect brake switch. If boot, plunger and brake switch are worn or damaged, replace brake switch.



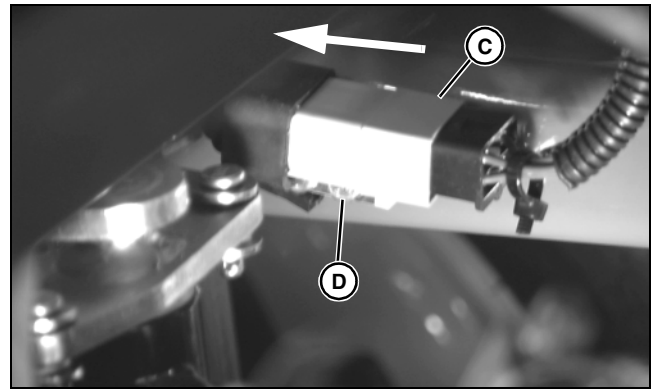
6. Depress master brake pedal. Plunger on brake switch (A) should extend when mixer (B) and neutral safety arm (C) are activated.
7. Release master brake pedal. Plunger on brake switch should retract completely when neutral safety arm is activated by neutral safety link (D) and ball joint (E).

Adjustment:

IMPORTANT: Avoid damage! Improper adjustment may cause damage to plunger and brake switch. Adjust brake switch with park brake lock lever in unlocked position and brakes disengaged.

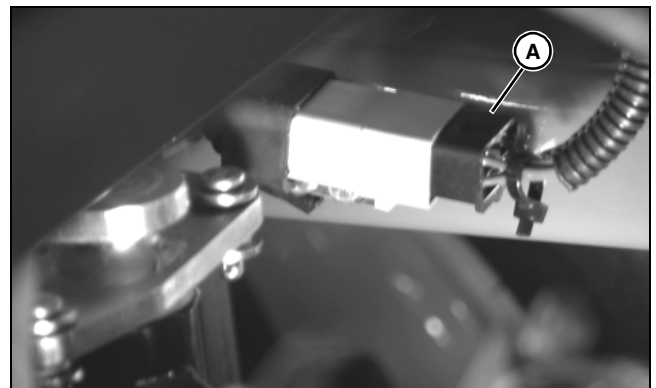


1. Loosen lock nut (A) and washer (B) on inside of frame rail.



2. Move brake switch (C) toward front of machine until plunger is fully retracted when contacting neutral safety arm.
3. Tighten screw (D) and lock nut.
4. Depress master brake pedal and release. Ensure that neutral safety arm properly contacts plunger. Adjust if necessary.
5. Check brake switch for proper operation:
 - a. Operate machine with PTO switch in on position.
 - b. While depressing master brake pedal, ensure PTO disengages.
 - c. Adjust or replace brake switch if necessary.

Removal:



1. Disconnect connector (A) on back of brake switch.
2. Remove screw, lock nut and brake switch from machine.
3. Replace brake switch.

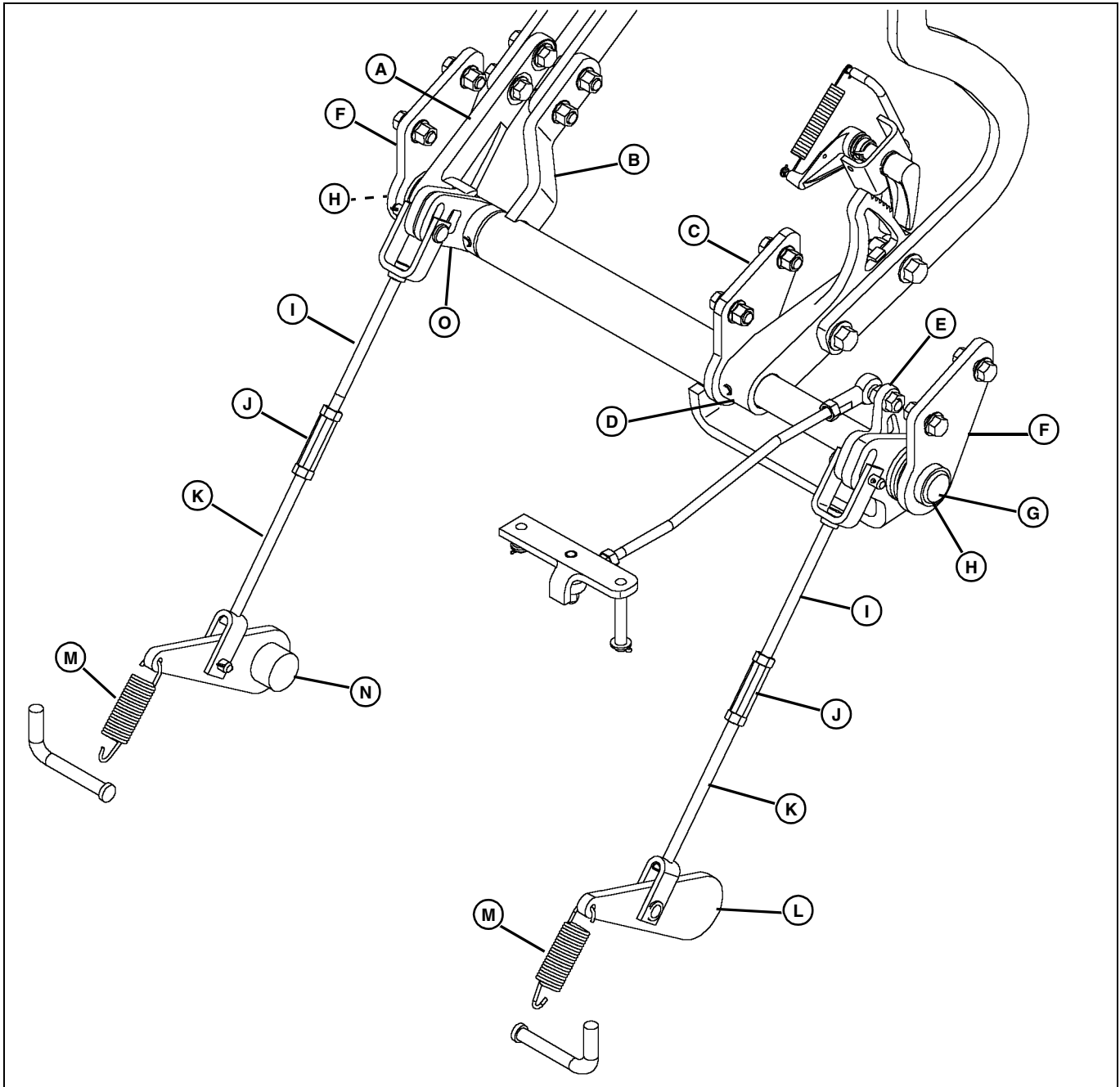
Installation:

- Installation is done in the reverse order of removal.
- Perform steps 2 - 5 in Adjustment section.
- Check brake switch for proper operation.

BRAKES REPAIR

Repair

Brake Linkage Removal and Installation



MX5607

- A - Left Turn Brake Arm
- B - Right Turn Brake Arm
- C - Center Support
- D - Master Brake Pedal Support
- E - Right Master Brake Arm
- F - Support (2 used)
- G - Pedal Shaft
- H - Bushing (2 used)

- I - Upper Brake Link Assembly (2 used)
- J - Turnbuckle (2 used)
- K - Lower Brake Link Assembly (2 used)
- L - Right Brake Cam Arm
- M - Brake Return Spring (2 used)
- N - Left Brake Cam Arm
- O - Left Master Brake Arm

BRAKES REPAIR

Removal:

1. Park machine on level ground.
2. Raise machine and remove front wheels.
3. Remove left brake return spring (M) from latch hook.
4. Remove cotter pin and clevis pin holding upper left brake link assembly (I) to left master brake arm (O) and left turn brake arm (A).
5. Remove cotter pin and clevis pin holding left lower brake link assembly (K) to left brake cam arm (N) and remove assembly (I, J, and K).
6. Remove right brake return spring (M) from latch hook.
7. Remove cotter pin and clevis pin holding upper right brake link assembly (I) to right master brake arm (E) and right turn brake arm (B).
8. Remove cotter pin and clevis pin holding right lower brake link assembly (K) to right brake cam arm (N) and remove assembly (I, J, and K).
9. Inspect brake link assemblies and turnbuckles for wear and damage. Replace as necessary.

Installation:

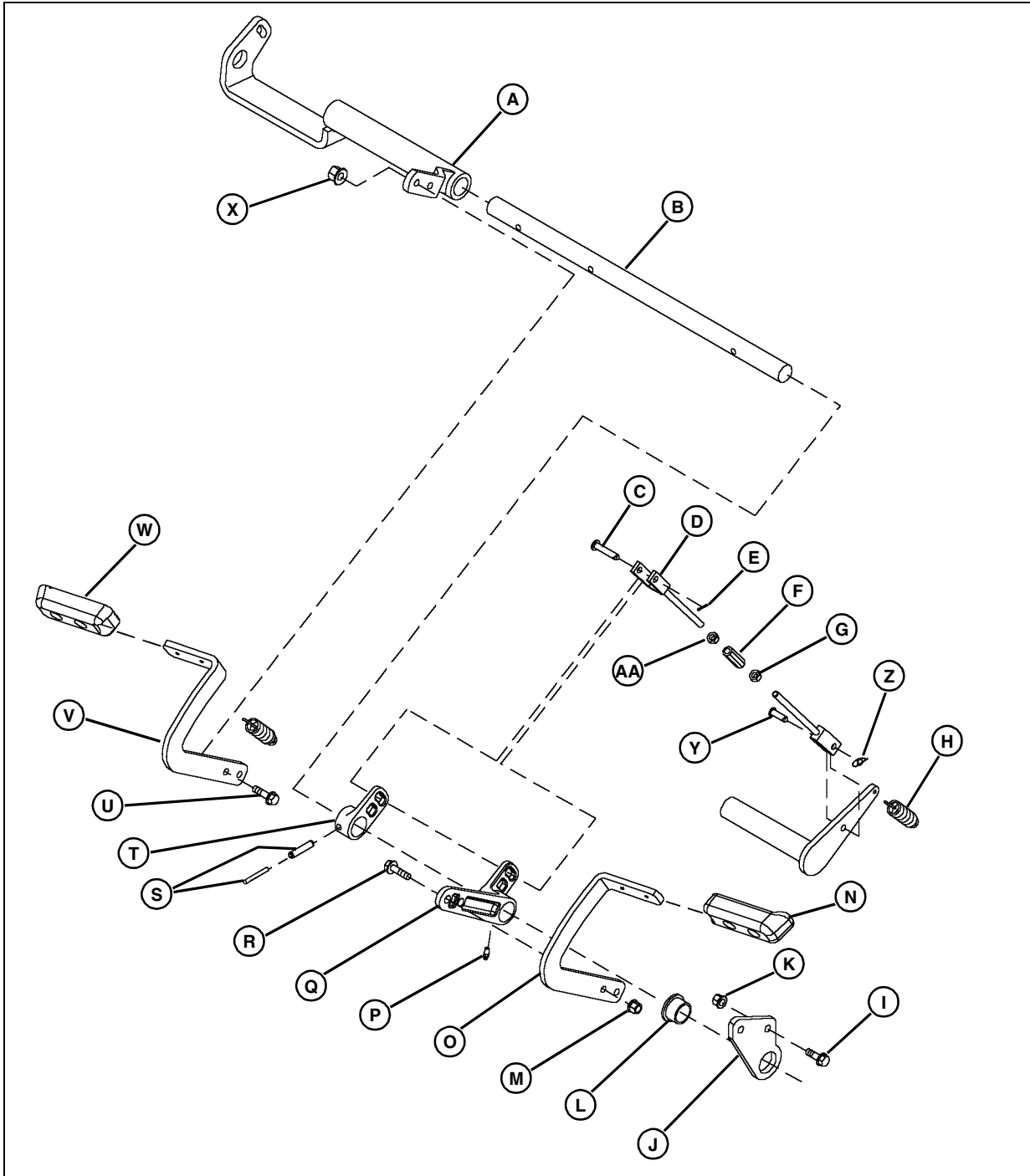
1. Install lock nuts on upper and lower brake link rods and connect with turnbuckle. Adjust assembled linkage to a preset length of **34.3 cm (13.5 in.)**.

NOTE: The lower right side clevis pin should be installed with its head facing outward. Place a washer between the clevis and rue pin.

2. Install brake link assembly on machine starting with lower clevis first, then upper clevis.
3. Install the brake return springs.
4. Check the left and right turn pedal free play and adjust turn brake linkage. (See "Turn Brake Adjustment" on page 688 in this section.)

BRAKES REPAIR

Turn Brake Pedals Removal and Installation



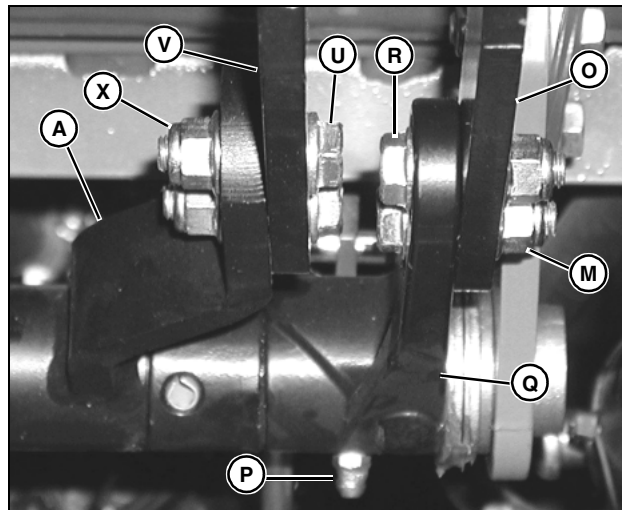
MX5614

BRAKES REPAIR

- A - Right Turn Brake Arm
- B - Pedal Shaft
- C - Drilled Clevis Pin (2 used)
- D - Clevis (2 used)
- E - Cotter Pin (2 used)
- F - Turnbuckle (2 used)
- G - Jam Nut, M8 (2 used)
- H - Brake Return Spring (2 used)
- I - Screw, M8 x 25 (2 used)
- J - Support
- K - Lock Nut, M8 (2 used)
- L - Pivot Bushing
- M - Lock Nut, M8 (4 used)
- N - Left Turn Brake Pedal Pad
- O - Left Turn Brake Pedal
- P - Lubrication Fitting
- Q - Left Turn Brake Arm
- R - Screw, M8 x 30 (2 used)
- S - Spring Pin Set
- T - Left Master Brake Arm
- U - Screw, M8 x 30 (2 used)
- V - Right Turn Brake Pedal
- W - Right Turn Brake Pedal Pad
- X - Lock Nut, M8 (2 used)
- Y - Clevis Pin (2 used)
- Z - Rue Pin (2 used)
- AA- Jam Nut M8 (left-hand thread)

Removal:

1. Park machine on level ground.
2. Lower lift arms or attachment.
3. Open service hatch on operator's platform.
4. Remove brake return spring (H) from hook on frame.



MX5615

5. Remove screws (R) and lock nuts (M) securing left turn brake pedal (O) to left turn brake arm (Q).
6. Remove left turn brake pedal.

NOTE: Lower left turn brake arm to gain access and remove screws on right turn brake pedal.

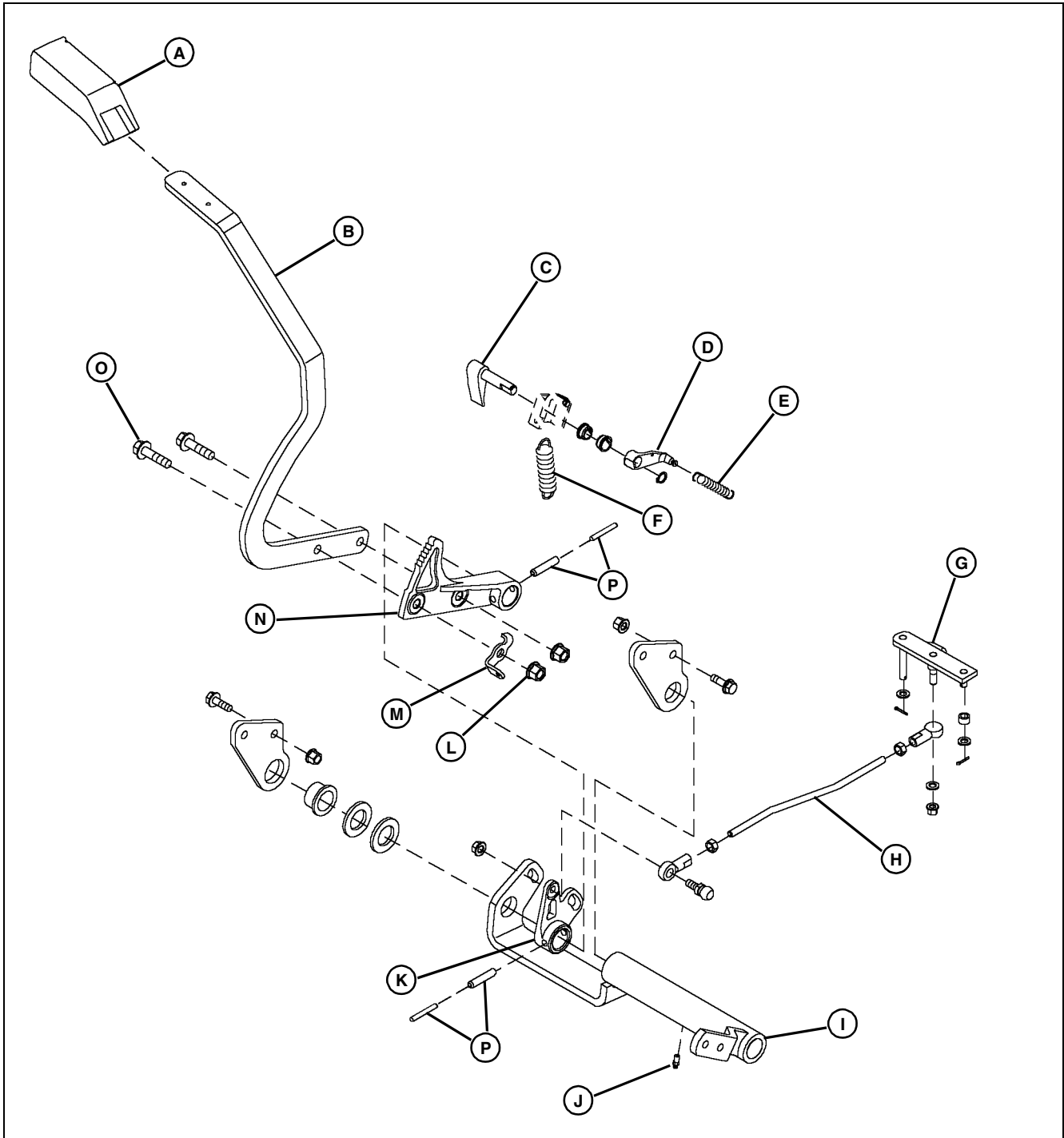
7. Remove screws (U) and lock nuts (X) securing right turn brake pedal (V) and right master brake arm (A).
8. Remove right turn brake pedal.
9. Inspect all parts for wear or damage. Replace as necessary.

Installation:

- Installation is done in the reverse order of removal.
- Make sure slots of inner and outer spring pins for spring pin set (S) are 180° apart.
- Lubricate left turn brake arm and pedal shaft using lubrication fitting (P).
- Check turn brake pedal free play and adjust. (See "Turn Brake Adjustment" on page 688.)

BRAKES REPAIR

Master Brake Pedal Removal and Installation



MX5617

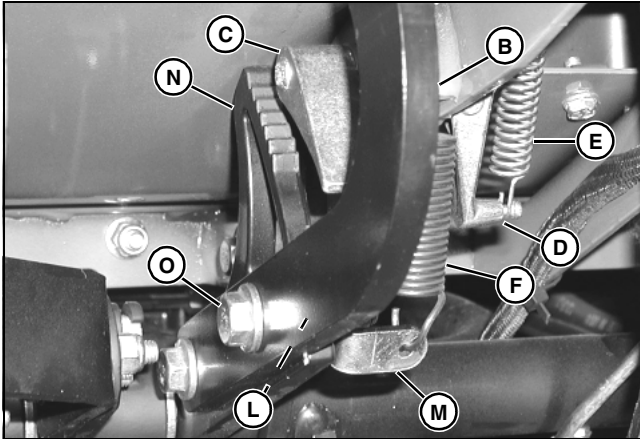
- A - Pad
- B - Master Brake Pedal
- C - Pawl
- D - Arm
- E - Spring
- F - Spring (Master Brake Pedal)
- G - Neutral Safety Arm
- H - Neutral Safety Link

- I - Right Turn Brake Arm
- J - Lubrication Fitting
- K - Right Master Brake Arm
- L - Lock Nut, M8 (2 used)
- M - Bracket
- N - Support
- O - Screw, M10 x 40 (2 used)
- P - Spring Pins

BRAKES REPAIR

Removal:

1. Park machine on level ground.
2. Unlock park brake.



MX5618

3. Disconnect spring (F) from bracket (M) to release support (N).

NOTE: Lift up on forward motion pedal to remove rear screw on master brake pedal.

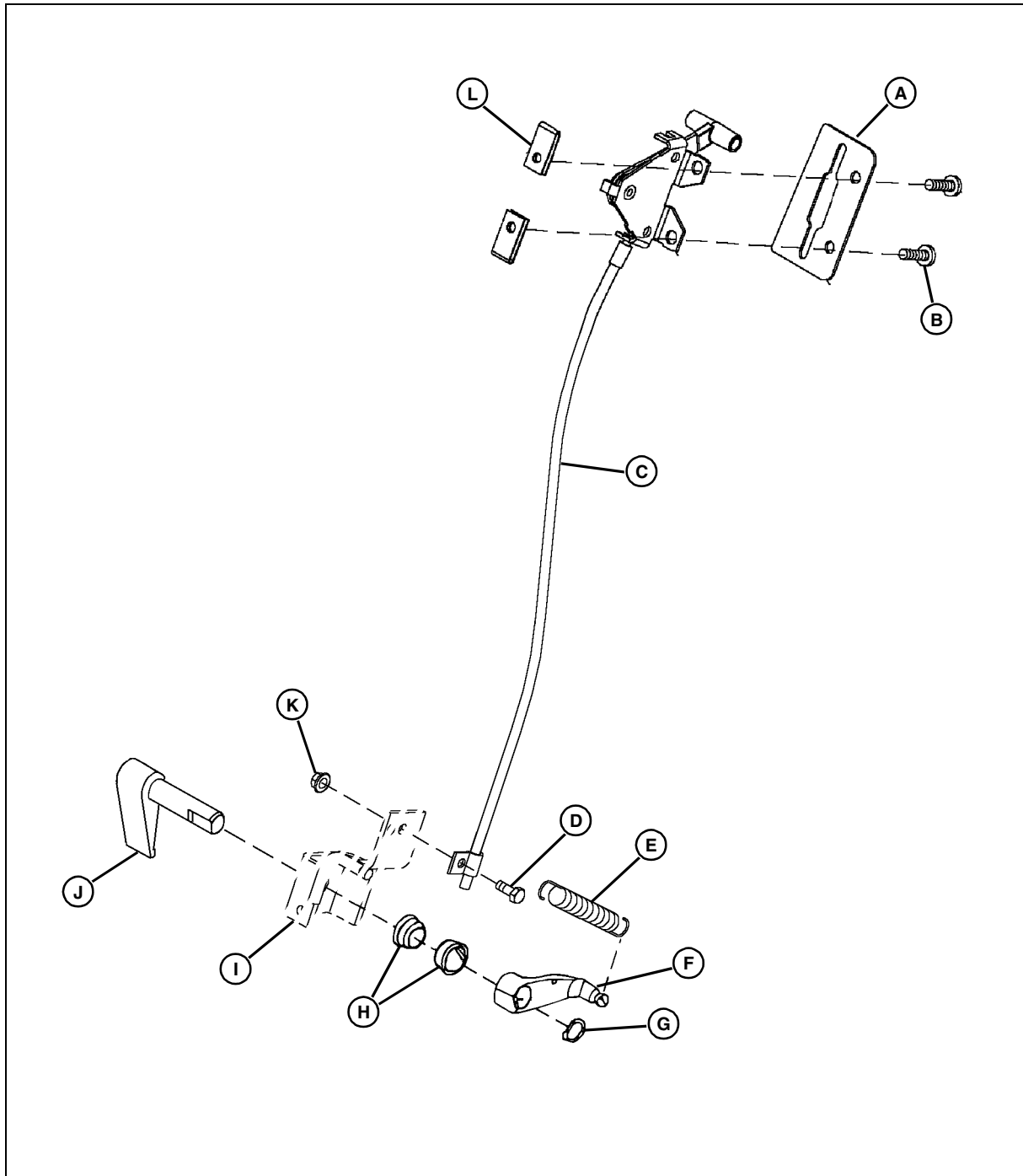
4. Remove lock nut (L) and screw (O).
5. Remove master brake pedal (B) and bracket.
6. Inspect master brake pedal and pad (A) for wear or damage. Replace as necessary.

Installation:

- Installation is done in the reverse order of removal.
- Make sure slots of inner and outer spring pins for spring pin sets (P) are 180° apart.
- Apply grease to lubrication fitting (J) to lubricate right turn brake arm (I), right master brake arm (K), and pedal shaft.
- Check master brake pedal free play and adjust. (See “Turn Brake Adjustment” on page 688.)
- Move park brake lever to lock position. Park brake arm (D) should activate pawl (C), and lock the support. Adjust if necessary. (See “Park Brake Lock Lever Assembly Removal and Installation” on page 696 for repair procedure.)
- Check neutral safety arm (G) and neutral safety link (H) for proper operation, and adjust if necessary. (See “F-N-R Linkage Adjustment” in the Power Train section.)
- Check brake switch for proper operation and adjust. (See “Brake Switch Adjustment” on page 689.)

BRAKES REPAIR

Park Brake Lock Lever Assembly Removal and Installation



MX5620

- A - Plate
- B - Screw
- C - Park Brake Lock Lever Assembly
- D - Cap Screw
- E - Spring
- F - Arm
- G - Snap Ring
- H - Bushing (2 used)

- I - Bracket
- J - Pawl
- K - Flange Nut
- L - Lock Nut



Suggest:

If the above button click is invalid.

Please download this document

first, and then click the above link

to download the complete manual.

Thank you so much for reading