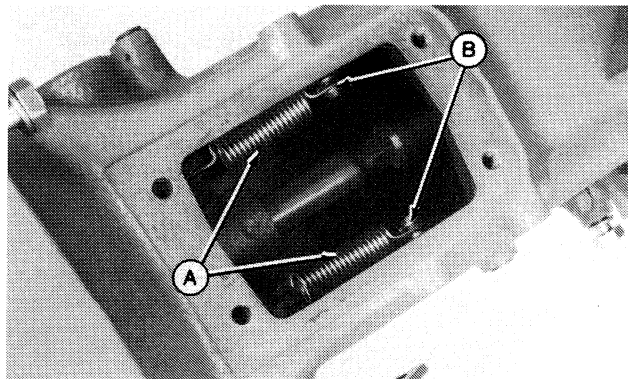


REMOVE CLUTCH SHAFT AND RELEASE MECHANISM

1. Separate clutch housing from engine as instructed in Section 10, Group 25.
2. Remove the two bearing release springs (A) from pins (B) in clutch housing (Steering housing removed for pictorial purposes).

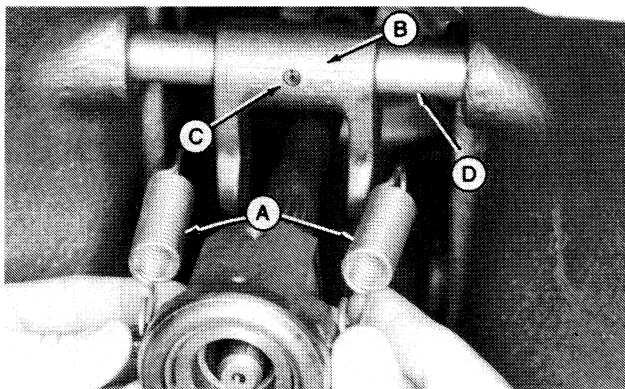


A16,RW1272 U03,05505 A 251180

3. Remove release bearing assembly with springs (A).
4. To remove clutch release yoke (B) and linkage; drive out spring pins (C), disconnect rod (on outside of clutch housing) from yoke armshaft (D), and remove armshaft and yoke.

NOTE: Spring pins (C) consist of two pins, one inside the other. Note position of splits for reassembly. They should face 180° (opposite) from one another in a vertical plane.

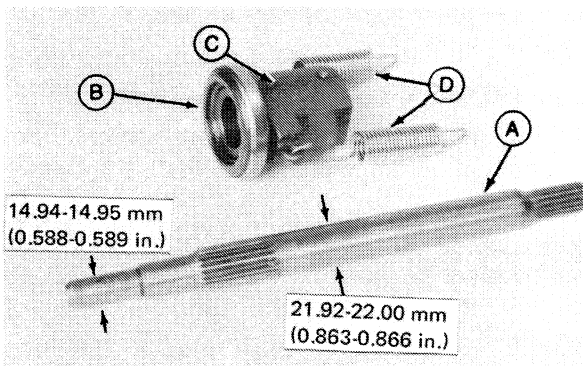
5. Remove clutch shaft by pulling from housing.



RW1273 05505 B 251180

INSPECT AND REPAIR CLUTCH SHAFT AND RELEASE MECHANISM

1. Inspect drive shaft (A).
 - a) Replace shaft if splines are worn or damaged.
 - b) Replace shaft if diameter at release bearing is less than 21.6 mm (0.85 in.).
 - c) If clearance between clutch drive shaft forward diameter and pilot bushing is 0.3 mm (0.012 in.) or greater, check to see which part(s) is excessively worn and replace.
2. Inspect release bearing assembly.
 - a) If bearing (B) is loose on sleeve (C) replace the entire assembly. Clearance should not exceed 0.02 mm (0.001 in.).
 - b) If clearance between release sleeve bushing and clutch drive shaft exceeds 0.5 mm (0.02 in.), check to see which parts should be replaced. I.D. of release sleeve bushing is 22.37 to 22.38 mm (0.8807 to 0.8809 in.).



A—Drive Shaft
B—Release Bearing

C—Release Sleeve
D—Springs

RW1274 05505 C 251180

Engine Clutch and Linkage

3. Inspect the two release bearing return springs (D).

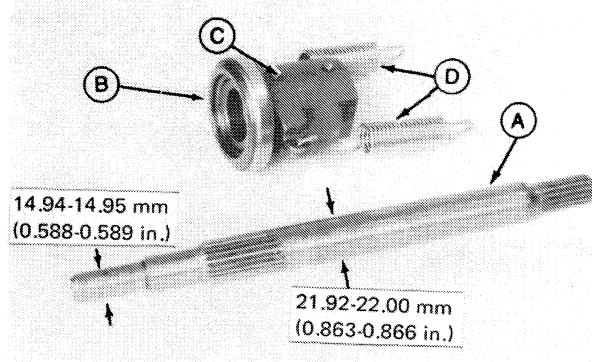
Free Length

107 mm (4.21 in.)

Working Lead

135 mm at 13.9 N
(5.31 in. at 30.7 lbs)

A—Clutch Shaft
B—Release Bearing
C—Release Bearing Sleeve
D—Bearing Release Springs



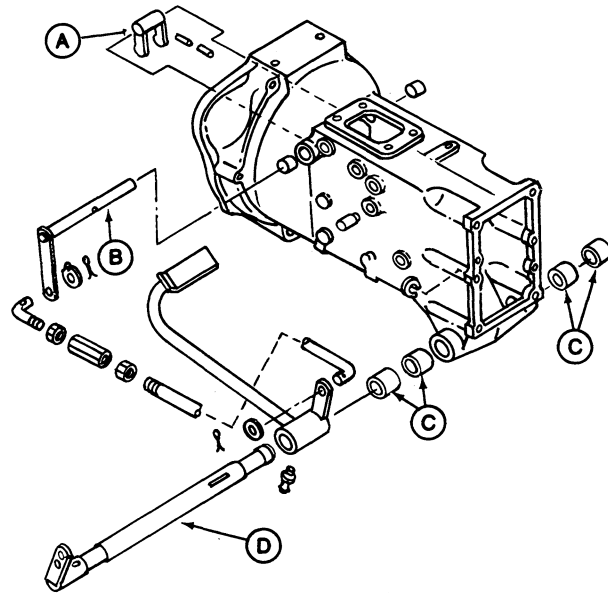
RW1274 05505 D 120180

4. Inspect clutch yoke (A) and yoke armshaft (B).

- I.D. of yoke is 20.00 to 20.20 mm (0.787 to 0.795 in.)
- O.D. of yoke armshaft is 19.95 to 20.00 mm (0.785 to 0.787 in.).
- Clearance between yoke and shaft should not exceed 0.3 mm (0.012 in.).

5. Inspect pedal assembly.

- I.D. of pedal bushing (C) is 25.05 to 25.11 mm (0.986 to 0.984 in.).
- O.D. of pedal shaft (D) is 24.95 to 25.00 mm (0.982 to 0.984 in.).
- I.D. of pedal is 25.07 to 25.12 mm (0.987 to 0.989 in.).
- Parts should be replaced when clearance between pedal or pedal bushings and pedal shaft is 1.0 mm (0.039 in.) or greater.



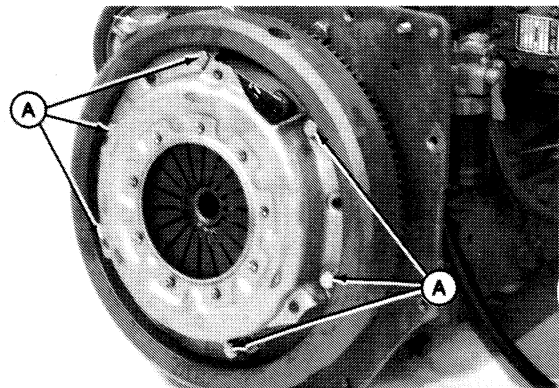
A—Clutch Yoke
B—Yoke Armshaft

C—Pedal Bushing
D—Pedal Shaft

RW1610 05505 E 120180

REMOVE AND INSPECT CLUTCH AND FLYWHEEL

1. Remove the six clutch mounting cap screws (A) and remove clutch assembly.



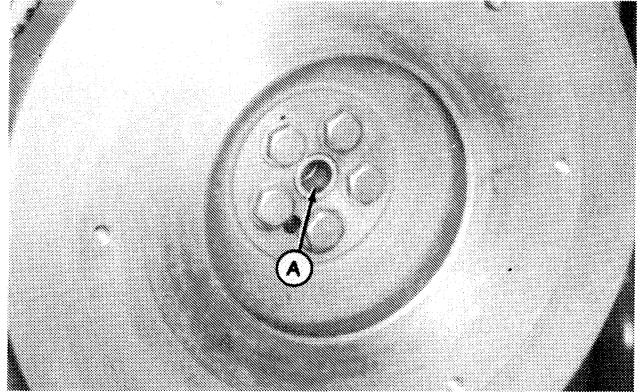
RW1275 05505 F 120180

2. Inspect flywheel pilot bushing (A).

a) I.D. of bushing is 15.00 to 15.03 mm (0.5906 to 0.5917 in.).

b) O.D. of clutch shaft at pilot bushing is 14.94 to 14.95 mm (0.588 to 0.589 in.).

c) Clearance between shaft O.D. and bushing I.D. should be less than 0.3 mm (0.012 in.).



3. If bushing (A) is to be replaced, use a 1/2 in. blind hole puller (OTC No. 28253) with slide hammer from OTC No. D-01061AA Blind Hole Puller Set.

a) Install new bushing using a 1 1/16 in. driver disk and 1/2 in. pilot disk (OTC No. 27500 and 27491).

b) Bushing should be installed flush with recess in flywheel.

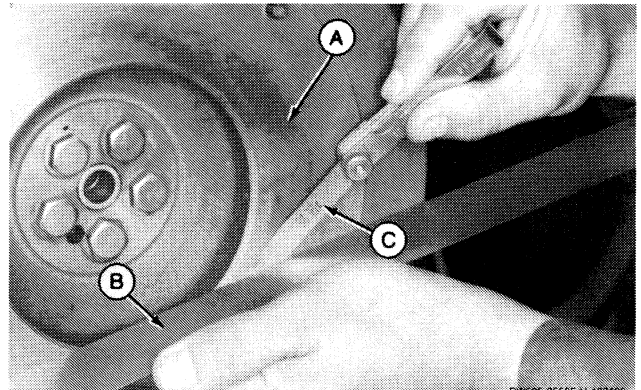
4. Coat I.D. of flywheel pilot bushing with a light clean grease.

RW594 05505 G 120180

5. Inspect flywheel friction drive surface (A) for distortion and scratches.

a) Measure flatness of drive surface using a straightedge (B) and feeler gauge (C). Replace flywheel if surface (A) is not flat to within 0.4 mm (0.016 in.).

b) Clean any rust or oil from drive surface (A) using a light abrasive.

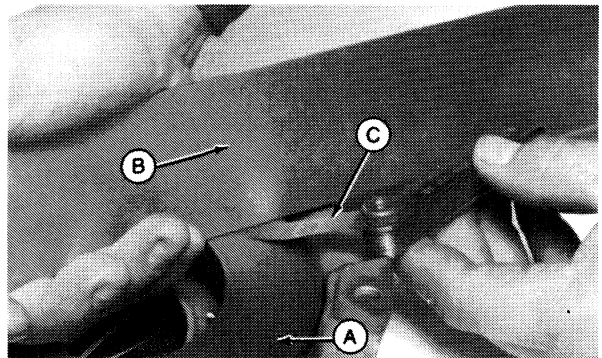


RW595 05505 H 120180

6. Inspect pressure plate drive surface (A) for distortion and scoring.

a) Measure flatness of drive surface using a straightedge (B) and feeler gauge (C). Replace entire clutch cover assembly if surface is not flat to within 0.4 mm (0.016 in.).

b) Clean any rust or oil from drive surface using a light abrasive.



RW596 05505 I 120180



Suggest:

If the above button click is invalid.

Please download this document

first, and then click the above link

to download the complete manual.

Thank you so much for reading