

Group 25 LOADER SEPARATION

SEPARATING LOADER AND ENGINE FRAMES

Disconnect battery ground strap. Operate controls to release hydraulic pressure from loader hydraulic system and steering and brake hydraulic system.

Remove plate on top of loader oil reservoir and disconnect bucket return-to-dig oil tube from loader control valve.

Support front and rear sections of loader and engine frames with heavy-duty stands to prevent frames from pivoting. Frames should be supported as evenly as possible to facilitate installation.

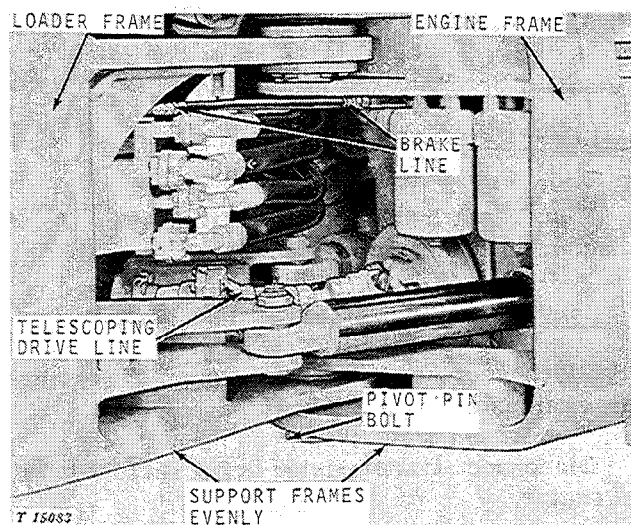


Fig. 1—Separating Frames—Lower Pivot Points

Refer to Figures 1 and 2 and perform the following steps:

1. Disconnect loader hoses, telescoping drive shaft, front lights, and front brake oil line.

2. Remove steering cylinder pivot pins. Keep washers and beveled spacers together for installation.

Do not damage threads on top of pivot pins while driving them out.

3. Remove cap screw and grease fitting from lower pivot pin and remove pin.

4. Remove the operator's platform.

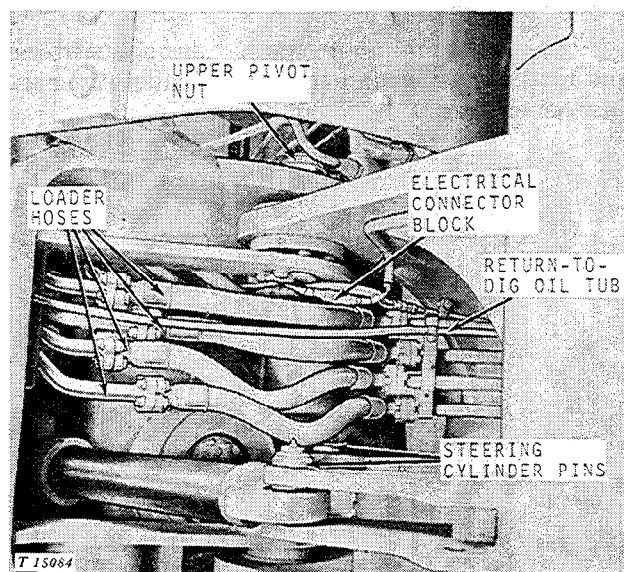


Fig. 2—Separating Frames—Upper Pivot Points

5. Remove upper pivot pin.

6. Attach a hoist to the loader frame and roll it away from the engine frame.

JOINING LOADER AND ENGINE FRAMES



CAUTION: Keep support stands under front and rear of loader and engine frames until installation is completed.

With frame pivot points aligned, install pivot pins. Secure upper pivot pin with plate and large nut and tighten to specified torque. See Section 80, Group 5 for checking upper hinge ball-rolling torque.

Install cap screw through bottom of lower pivot pin and secure with self-locking nut. Install grease fitting.

Secure steering cylinders to loader frame with pins and washers. Position spacers on top of self-aligning bushing with beveled side of spacer against bushing. Insert pivot pin (threaded end up) and secure with washer and nut. Tighten nut to specifications. Install operator's platform.

Connect telescoping drive shaft. Connect loader hoses and bucket return-to-dig oil tube.

Connect front lights and brake oil line.

REMOVING ENGINE

Operate controls to release hydraulic pressure from loader hydraulic system and steering and brakes hydraulic system.

Pull pins from pivot lock bar on engine frame and lock bar between engine and loader frames. Disconnect battery ground strap.

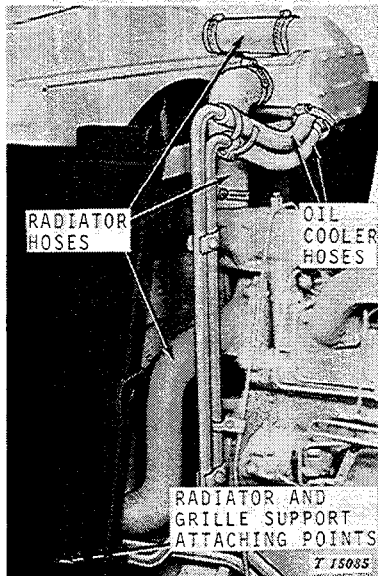


Fig. 3-Grille and Radiator Attaching Points

Remove hood and drain radiator. Disconnect inlet and outlet hoses. Disconnect oil cooler hoses and remove cooler, radiator, and grille.

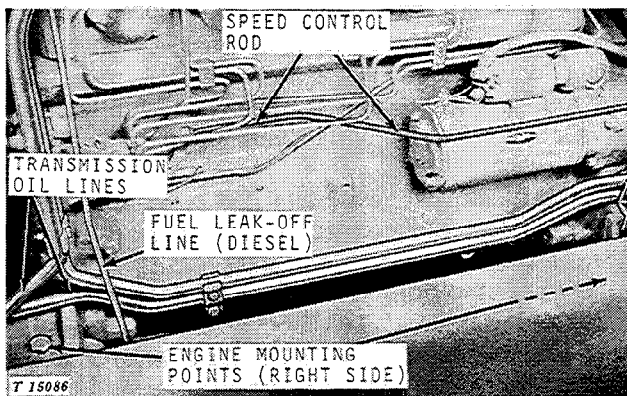


Fig. 4-Disconnecting Right Side of Engine

Disconnect transmission oil lines from engine-mounted hydraulic pump. Remove clamps from lines to aid in engine removal (Fig. 4).

Disconnect speed control rod from fuel injection pump.

Disconnect fuel leak-off line.

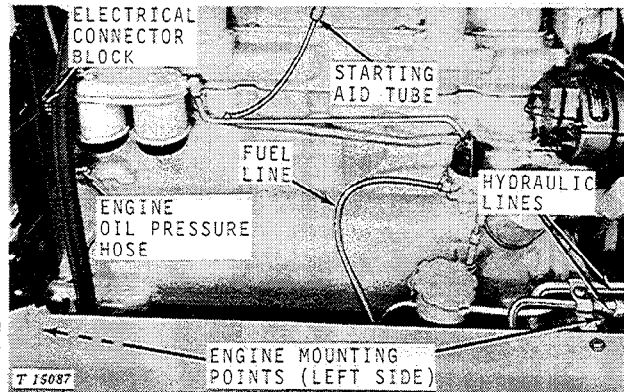


Fig. 5-Disconnecting Left Side of Engine

Disconnect hydraulic lines from pump. Also disconnect rear pump leak-off line.

Disconnect fuel line at transfer pump.

Disconnect electrical harness, oil pressure hose, and starting aid tube.

Disconnect transmission drive shaft at front of engine.

With a hoist supporting engine, remove cap screws securing left engine brackets to engine frame.

Remove right engine brackets for extra clearance during engine removal.

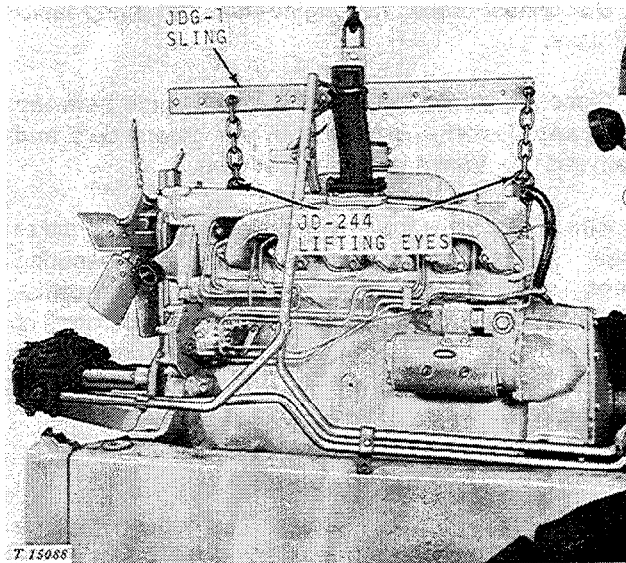


Fig. 6-Removing Engine

Attach JDG-1 or JDG-23 Engine Lifting Sling or D01043AA Load Positioning Sling to engine using two JD244 Lifting Eyes or JDG-19 Lifting Brackets.

Using a hoist, pull engine forward and lift from frame (Fig. 6).

INSTALLATION

Check condition of bonded rubber engine-mounting pads (13, Fig. 7) in engine frame. If replacement is necessary, soap outside of mounts and press into engine frame.

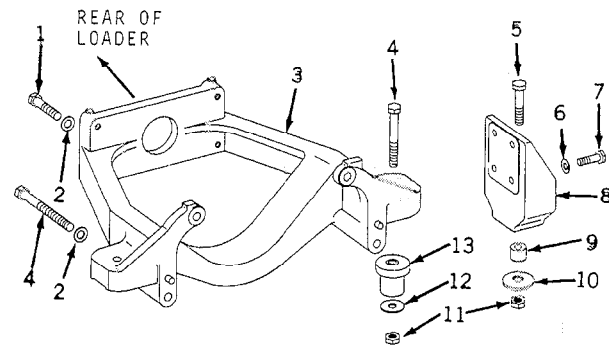
Position engine in engine frame and tighten hardware to specified torque.

Connect transmission drive shaft to front of engine.

Connect electrical wiring harness.

Connect fuel line to fuel transfer pump and fuel leak-off line to injection pump.

Connect hydraulic lines to pump and install rear pump leak-off line.



T 15089

- | | |
|------------------------|--------------------------|
| 1—Cap Screw (2 used) | 8—Bracket (2 used) |
| 2—Washer (4 used) | 9—Spacer (2 used) |
| 3—Support | 10—Washer (2 used) |
| 4—Cap Screw (4 used) | 11—Nut (4 used) |
| 5—Cap Screw (2 used) | 12—Washer (2 used) |
| 6—Lock Washer (8 used) | 13—Mounting Pad (2 used) |
| 7—Cap Screw (8 used) | |

Fig. 7-Exploded View of Engine Supports

Install grille support, radiator, and oil cooler, making sure all baffling is in place.

Connect radiator and oil cooler hoses.

Connect speed control rod to fuel injection pump.

Connect air cleaner hose to air intake manifold.

Install muffler, hood, precleaner (or air cleaner stack), and grille screen.

Fill radiator.

Connect battery ground strap.

Start engine and check fuel line, all hydraulic lines, and radiator hoses for leaks.

REMOVING TRANSMISSION

Pull pins from pivot lock bar on engine frame and secure bar between engine and loader frames. Disconnect battery ground strap.

Remove battery compartment, seat, and operator's platform. Battery compartment need not be removed if hoist equipment is high enough to raise transmission over compartment. Disconnect and remove front speed control rod. Remove platform rear support bar for clearance.

Operate controls to release hydraulic pressure from loader hydraulic system and steering and brakes hydraulic system and drain transmission and loader oil reservoirs.

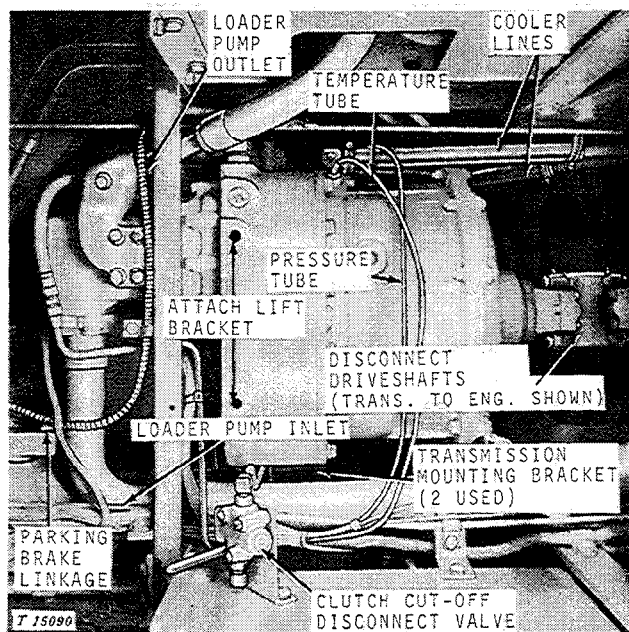


Fig. 8-Disconnecting Transmission

Disconnect transmission oil filter and oil cooler lines, and loader pump inlet and outlet lines (Fig. 8).

Disconnect transmission oil pressure and temperature sending tubes. Remove transmission shift cable. Disconnect starter safety switch.

Remove clutch cut-off disconnect valve.

Disconnect parking brake linkage.

Disconnect brake and engine-mounted pump leak-off lines.

Disconnect drive shafts at universal joints between the transmission and front and rear differentials and between the transmission and engine.

Attach a hoist to the transmission, using lift bracket (see "Special Tools"). Remove cap screws securing transmission brackets to engine frame. With transmission completely disconnected, lift transmission out of engine frame. When transmission is halfway out of engine frame, remove left support bracket for extra removal clearance.

INSTALLATION

Using a hoist, position transmission between engine frame side rails, tighten transmission mounting brackets-to-engine frame cap screws to specified torque.

Connect all drive shafts at universal joints.

Connect brake and pump leak-off lines.

Connect parking brake linkage and transmission shift cable.

Install clutch cut-off disconnect valve.

Connect transmission oil filter lines. Connect transmission oil pressure and temperature sending tubes. Connect starter safety switch.

Connect transmission oil cooler lines, loader pump inlet and outlet lines.

Install rear platform support, front speed control rod, operator's platform and seat. Install battery compartment if removed. Connect battery ground strap.

Fill transmission and loader reservoirs with recommended oils (see Group 20).



Suggest:

If the above button click is invalid.

**Please download this document
first, and then click the above link
to download the complete manual.**

Thank you so much for reading