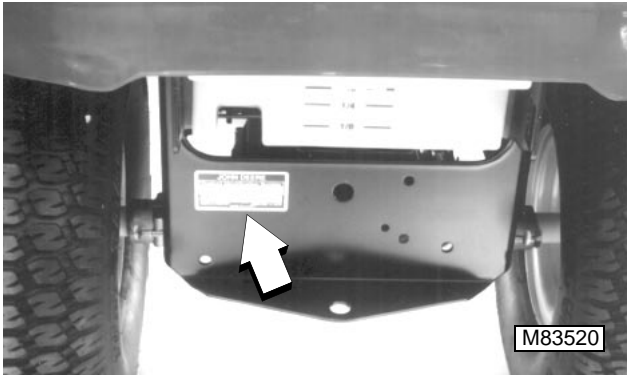


### SERIAL NUMBER LOCATION

When ordering parts or submitting a warranty claim, it is IMPORTANT that the machine product identification number and component serial numbers are included.

The location of the machine identification number and component serial numbers are shown.

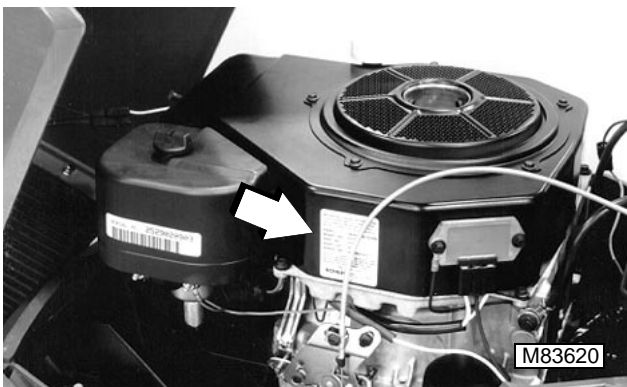
### MACHINE IDENTIFICATION NUMBER



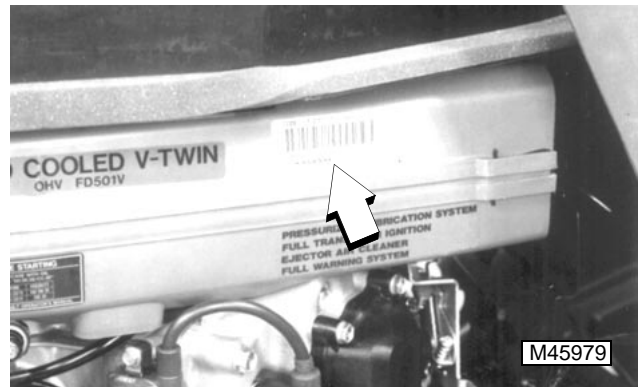
### ENGINE SERIAL NUMBER—LX172, LX176 AND LX186



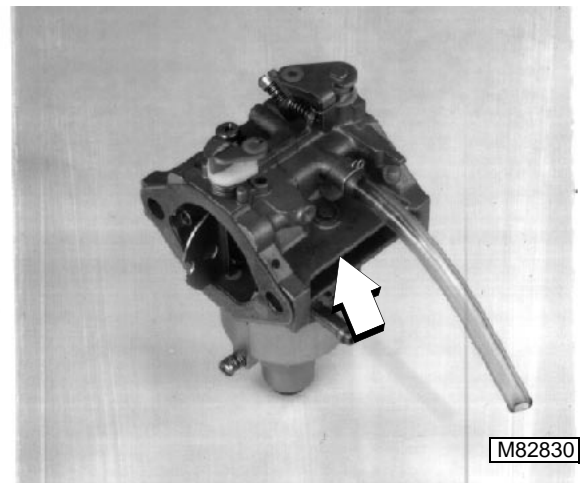
### ENGINE SERIAL NUMBER—LX173



### ENGINE SERIAL NUMBER—LX178 AND LX188



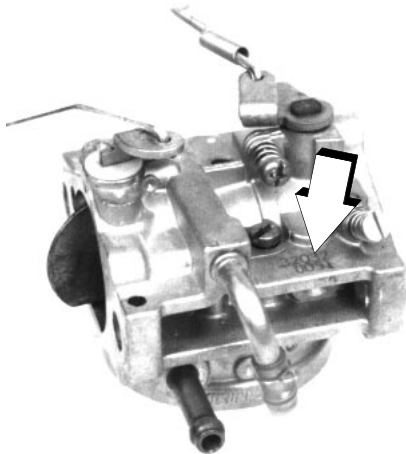
### CARBURETOR SERIAL NUMBER—LX172, LX176 AND LX186



### CARBURETOR PART NUMBER — LX173 (ONLY)



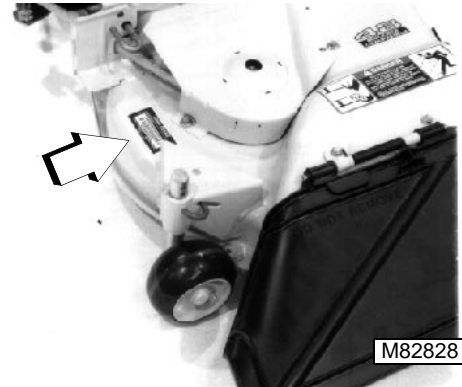
**CARBURETOR SERIAL NUMBER—  
LX178 AND LX188**



M53957

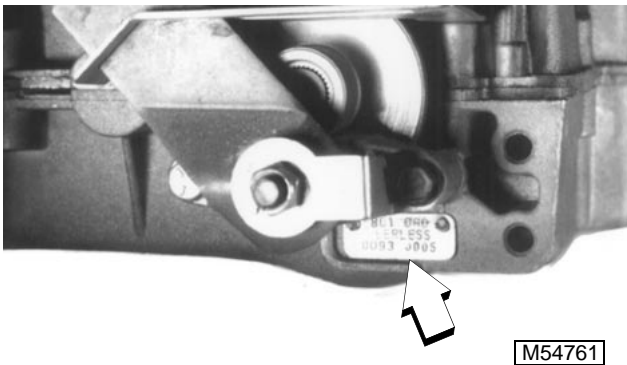
**MOWER DECK SERIAL NUMBER  
LOCATION**

**38 and 48-Inch Mower Decks**



M82828

**GEAR TRANSAXLE SERIAL  
NUMBER—LX172 AND LX173**



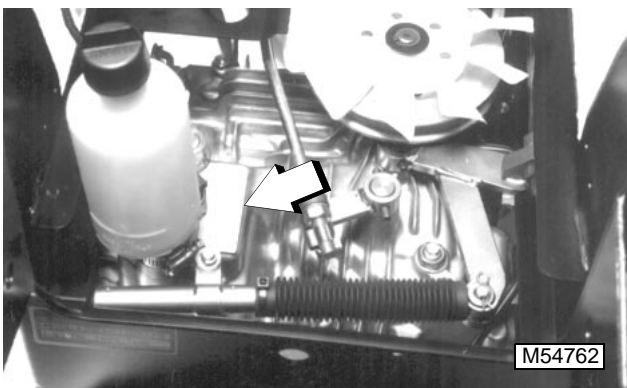
M54761

**44-Inch Rear Discharge Mower Deck**



M82827

**HYDROSTATIC TRANSAXLE SERIAL  
NUMBER—LX176, LX178, LX186  
AND LX188**



M54762

# CONTENTS

Page

## ENGINE—KAWASAKI FC420V(LX172/LX176) / FC540V(LX186)

### SPECIFICATIONS

ENGINE DESIGNATION . . . . .	3-7
TEST AND ADJUSTMENT SPECIFICATIONS . . . . .	3-7
REPAIR SPECIFICATIONS . . . . .	3-7
SPECIAL OR ESSENTIAL TOOLS . . . . .	3-12
OTHER MATERIALS . . . . .	3-13
SERVICE PARTS KITS . . . . .	3-13

### COMPONENT LOCATION

EXTERNAL ENGINE COMPONENTS . . . . .	3-14
INTERNAL ENGINE COMPONENTS . . . . .	3-15
OIL PUMP, BREATHER AND COMPRESSION RELEASE COMPONENTS . . . . .	3-16
FUEL/AIR SYSTEM COMPONENTS . . . . .	3-17

### THEORY OF OPERATION

LUBRICATION SYSTEM OPERATION . . . . .	3-18
COOLING SYSTEM OPERATION . . . . .	3-20

### TROUBLESHOOTING

TROUBLESHOOTING CHART . . . . .	3-22
ENGINE TROUBLESHOOTING GUIDE . . . . .	3-24
STARTER MOTOR TROUBLESHOOTING GUIDE . . . . .	3-28

### TESTS AND ADJUSTMENTS

THROTTLE CABLE TEST AND ADJUSTMENT . . . . .	3-29
CHOKE PLATE TEST AND ADJUSTMENT . . . . .	3-29
GOVERNOR ADJUSTMENT . . . . .	3-30
FAST IDLE SPEED ADJUSTMENT . . . . .	3-31
SLOW IDLE SPEED ADJUSTMENT—NON CARB/EPA ENGINES . . . . .	3-32
SLOW IDLE SPEED ADJUSTMENT—CARB/EPA ENGINES . . . . .	3-32
CYLINDER COMPRESSION PRESSURE TEST . . . . .	3-34
VALVE CLEARANCE TEST AND ADJUSTMENT . . . . .	3-35
AUTOMATIC COMPRESSION RELEASE (ACR) TEST . . . . .	3-35
CRANKCASE VACUUM TEST . . . . .	3-36
ENGINE OIL PRESSURE TEST . . . . .	3-37
FUEL PUMP TESTS . . . . .	3-37
SPARK TEST . . . . .	3-38
SPARK PLUG GAP ADJUSTMENT . . . . .	3-39
MAGNETO IGNITION COIL RESISTANCE TEST . . . . .	3-39
IGNITOR MODULE TEST . . . . .	3-40
MAGNETO IGNITION COIL WITH IGNITION MODULE RESISTANCE TEST . . . . .	3-40

### REPAIR

FUEL TANK . . . . .	3-41
THROTTLE CONTROL LEVER AND CABLE . . . . .	3-41
ENGINE . . . . .	3-42
MUFFLER . . . . .	3-43





	Page
<b>REPAIR, continued</b>	
AIR CLEANER . . . . .	3-43
CARBURETOR	
Removal/Installation. . . . .	3-44
Disassembly/Assembly . . . . .	3-44
Clean/Inspect/Rebuild . . . . .	3-47
FUEL PUMP . . . . .	3-47
BREATHER . . . . .	3-47
BLOWER HOUSING	
Inspection/Replacement. . . . .	3-48
Flywheel Screen Adjustment . . . . .	3-48
FLYWHEEL. . . . .	3-48
ROCKER ARM ASSEMBLY	
Removal/Installation. . . . .	3-49
Inspection. . . . .	3-49
CYLINDER HEAD AND VALVES	
Removal/Installation. . . . .	3-49
Disassembly/Assembly . . . . .	3-50
Inspection. . . . .	3-51
Valve Guide Replacement . . . . .	3-52
ANALYZE VALVES . . . . .	3-53
RECONDITION VALVE SEATS . . . . .	3-54
LAP VALVES . . . . .	3-54
CRANKCASE COVER . . . . .	3-54
PISTON AND CONNECTING ROD	
Removal . . . . .	3-55
Installation . . . . .	3-55
Disassembly. . . . .	3-55
Assembly . . . . .	3-56
Inspection. . . . .	3-56
Check Piston Ring End Gap . . . . .	3-58
ANALYZE PISTON RING WEAR . . . . .	3-58
ANALYZE PISTON WEAR . . . . .	3-60
CAMSHAFT AND TAPPETS	
Removal . . . . .	3-61
Installation . . . . .	3-61
Inspection. . . . .	3-62
RECIPROCATING BALANCER	
Removal/Installation. . . . .	3-63
Disassembly/Assembly . . . . .	3-63
Inspection. . . . .	3-64
Bearing Replacement. . . . .	3-64
crankshaft end play test . . . . .	3-65
CRANKSHAFT AND MAIN BEARINGS	
Removal/Installation. . . . .	3-65
Inspection. . . . .	3-65
End Play Adjustment . . . . .	3-66

	Page
<b>REPAIR, continued</b>	
CRANKSHAFT OIL SEALS . . . . .	3-67
ANALYZE CRANKSHAFT AND CONNECTING ROD WEAR . . . . .	3-67
CYLINDER BLOCK	
Inspection . . . . .	3-68
Deglaze Cylinder Bore . . . . .	3-68
Rebore Cylinder Block . . . . .	3-68
OIL PUMP	
Disassembly/Assembly . . . . .	3-69
Inspection . . . . .	3-70
OIL FILTER MANIFOLD . . . . .	3-71
GOVERNOR . . . . .	3-71
GOVERNOR SHAFT . . . . .	3-72
STATOR . . . . .	3-72
MAGNETO IGNITION COIL	
Removal/Installation . . . . .	3-72
Air Gap Adjustment . . . . .	3-73
IGNITOR MODULE . . . . .	3-73
MAGNETO IGNITION COIL WITH IGNITOR MODULE	
Removal/Installation . . . . .	3-73
Air Gap Adjustment . . . . .	3-73
STARTER	
Removal/Installation . . . . .	3-74
Analyze Condition . . . . .	3-74
Starter No-Load Amperage Draw and RPM Bench Tests . . . . .	3-74
Disassembly/Assembly . . . . .	3-75
Exploded View . . . . .	3-75
Inspection/Test . . . . .	3-76





**Suggest:**

**If the above button click is invalid.**

**Please download this document**

**first, and then click the above link**

**to download the complete manual.**

**Thank you so much for reading**