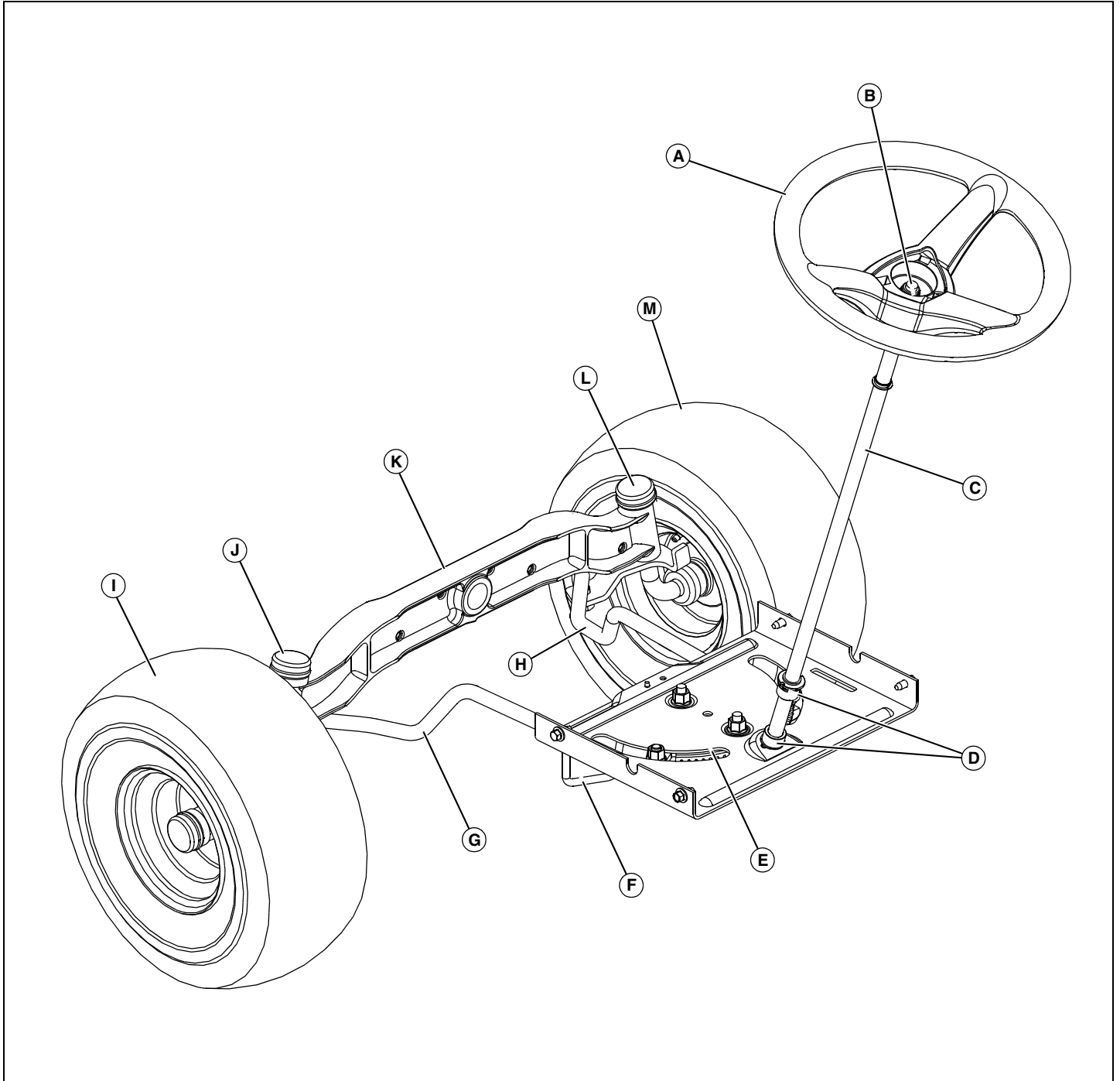


# STEERING COMPONENT LOCATION

## Component Location

### Steering System Components



MIF

- A - Steering Wheel
- B - Fastening Hardware
- C - Steering Shaft
- D - Lower Bushing
- E - Sector Gear
- F - Belt Guide

- G - Left Drag Link
- H - Right Drag Link
- I - Left Wheel
- J - Left Spindle
- K - Beam Axle Assembly
- L - Right Spindle
- M - Right Wheel

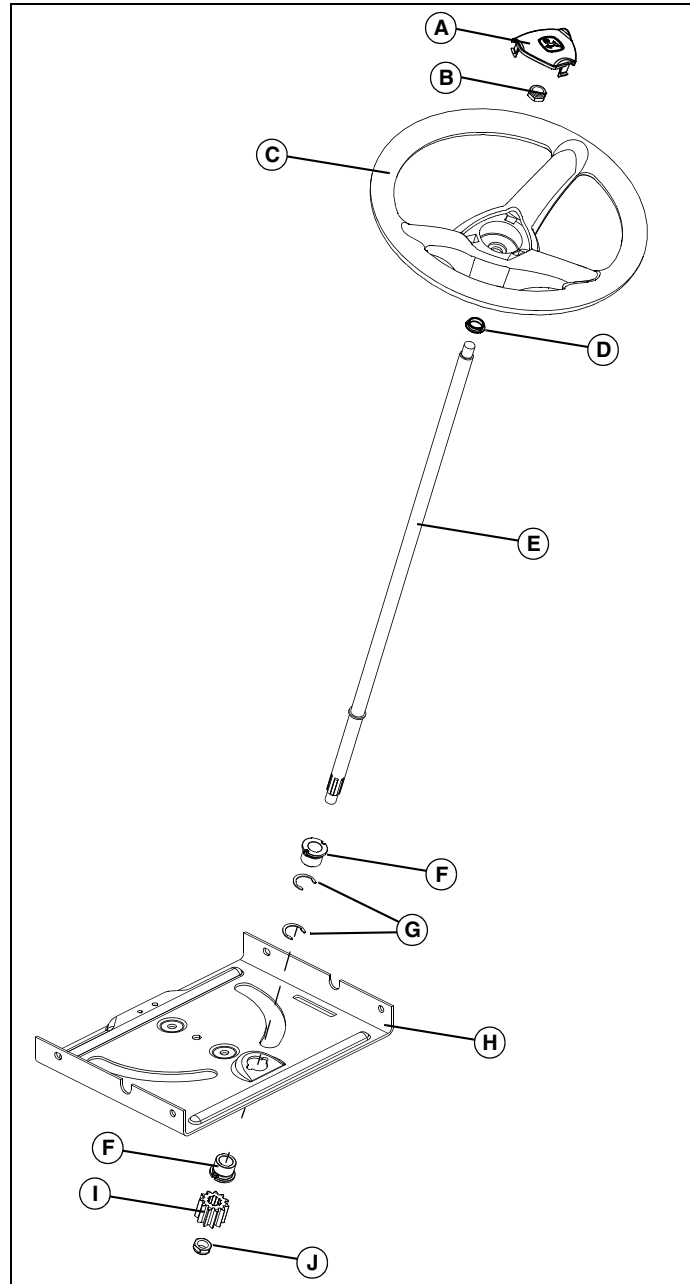
# STEERING REPAIR

## Repair

### Steering Shaft and Pedestal Removal and Installation

#### Removing:

1. Remove mower deck. See "Mower Deck Removal and Installation" on page 364 in the Attachments section.
2. Safely raise front and back wheels to a working height.

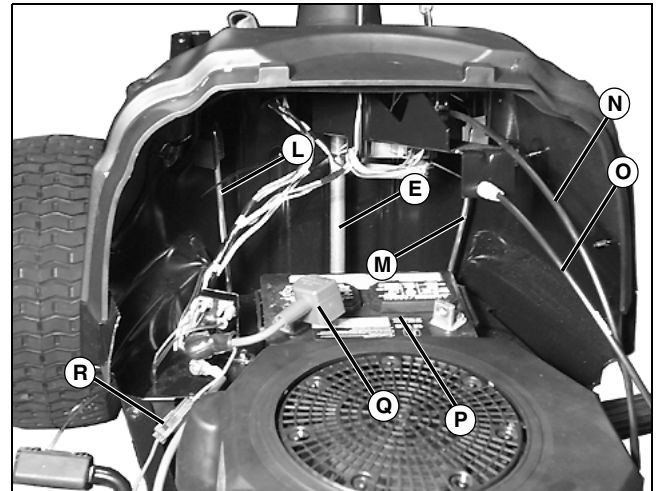


MIF

- A - Cap
- B - Lock Nut
- C - Steering Wheel

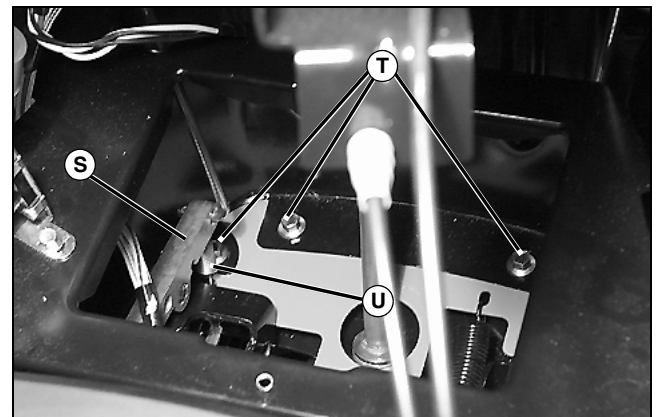
- D - Bushing
- E - Steering Shaft
- F - Bushing (2 used)
- G - Snap Ring (2 used)
- H - Plate
- I - Steering Pinion Gear
- J - Lock Nut

3. While holding steering wheel (C), remove lock nut (K) and steering pinion gear (J) from below machine frame.
4. Remove cap (A), lock nut (B), and steering wheel (C).



MX9667

5. Remove positive (Q) and negative battery cables, and remove battery (P). Remove screw and battery bracket below battery.
6. Disconnect electrical connection (R) and all other electrical connections.
7. Disconnect parking brake rod (M) and cruise control rod (L) from handles (under pedestal housing).
8. Disconnect throttle cable (N) at engine and PTO engagement cable (O) from clip on the side of frame.

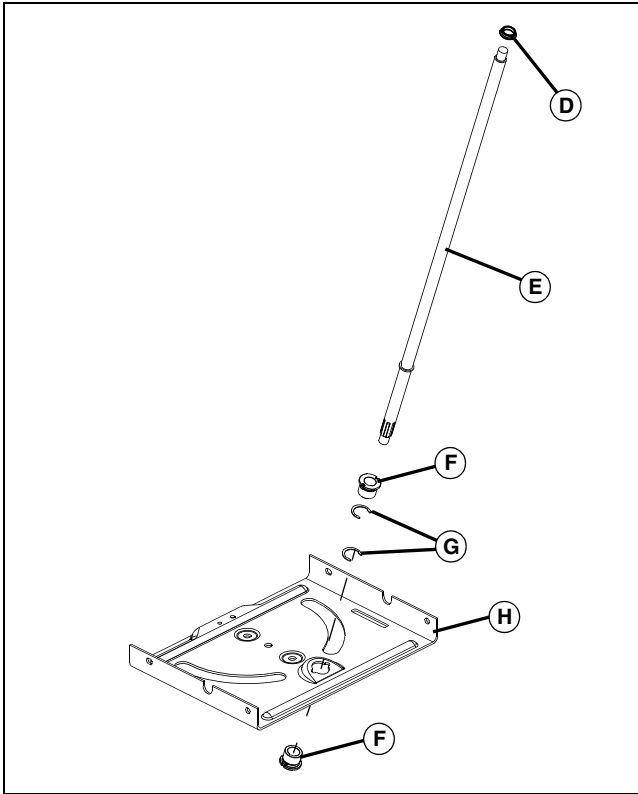


MX9671

9. Remove spring (U) from cruise latch (S).

# STEERING REPAIR

10. Remove the six screws (T) holding pedestal assembly to the frame. Remove pedestal assembly.



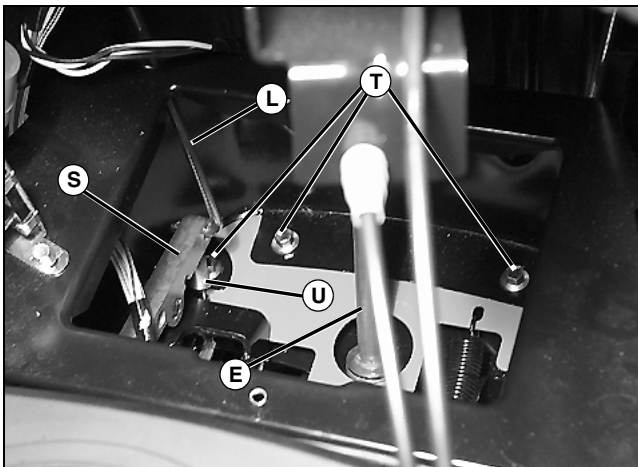
MIF

**NOTE:** If bushings (F) are excessively worn, replace by removing snap rings (G) and lifting out of frame and/or plate (I).

11. Remove plastic bushing (D) in plate near top of pedestal.

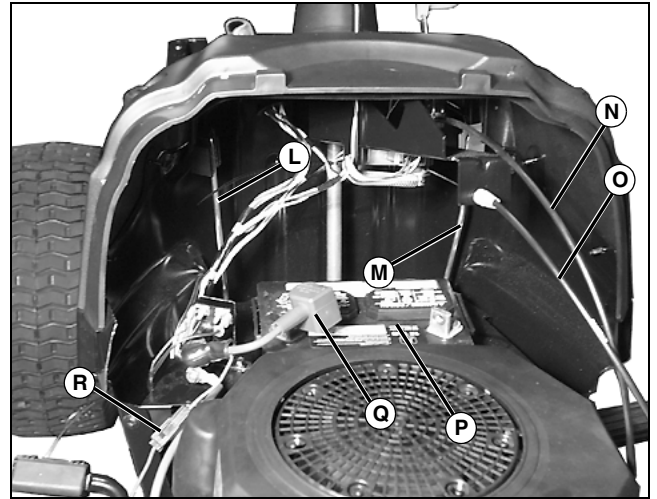
## Installing:

1. Install steering shaft (E) and Install steering pinion gear and lock nut from below machine frame.
2. Install plastic bushing (D) in plate near top of pedestal.



MX9671

3. Place pedestal down onto frame, taking care to place parking brake rod (M) and cruise control rod (L) through pedestal.
4. Hook parking brake rod and cruise control rods to their respective handles.
5. Secure pedestal with six cap screws (T).
6. Install spring (U) to cruise latch (S) and cruise control rod (L).



MX9667

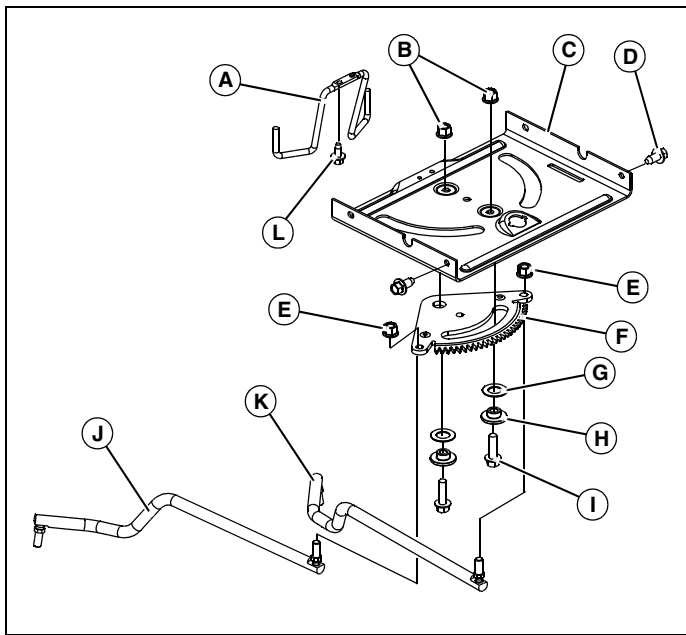
7. Connect throttle cable (N) and PTO engagement cable (O).
8. Connect electrical connection (R) and all other electrical connections.
9. Install steering wheel (C), lock nut (B), and cap (A).
10. Tighten lock nut (K) from below machine, while holding steering wheel.
11. Install battery bracket and battery (P), and connect positive (Q) and negative battery terminals.
12. Lower machine, and install mower deck.

## Steering Sector Gear Removal and Installation

### Removing:

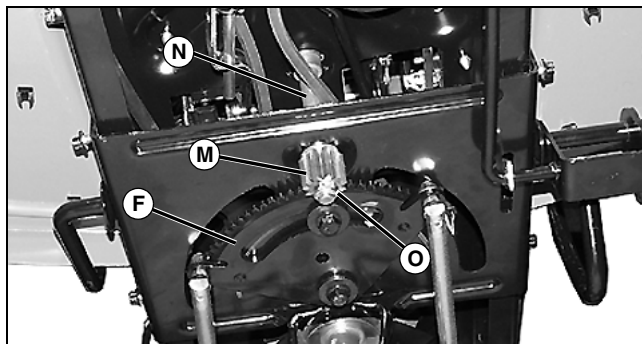
1. Disconnect battery and remove.
2. Remove mower deck. See "Mower Deck Removal and Installation" on page 364 of the Attachments section.
3. Safely raise front and back wheels to a working height.

# STEERING REPAIR



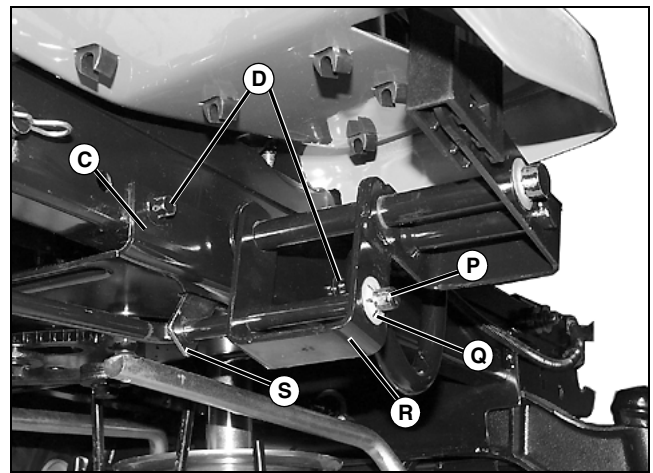
MIF

- A - Belt Guide
- B - Lock Nut
- C - Plate
- D - Screw (self-tapping)
- E - Lock Nut
- F - Steering Sector Gear
- G - Washer
- H - Bushing
- I - Screw
- J - Left Drag Link
- K - Right Drag Link
- L - Screw



MX9680

4. Remove nut (O) and pinion gear (M).
5. Raise steering control rod (N) just enough to clear sector gear (F).



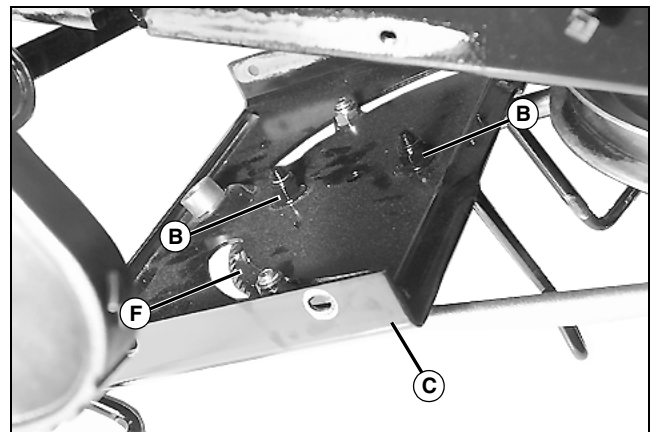
MX9680

6. Hydro models: Remove retainer (Q) from forward/reverse rod (P), and remove rod from pedal assembly (R) and cruise control bracket (S).

**IMPORTANT: Avoid damage! Remove nut from draglinks (J and K) at wheel end before lowering plate (C). This prevents breakage of ball joints.**

7. Remove screws (D) from bracket (C) on both sides of machine.

**NOTE: Be careful when lowering plate (C). Note location for hardware and linkage for forward/reverse pedal assembly during this procedure.**



MX9681

8. Lower plate (C) to obtain clearance to remove bolts and nuts (B) and washers and bushings.
9. Lower gear (F) from bracket and inspect for wear or damage.



**Suggest:**

**If the above button click is invalid.**

**Please download this document**

**first, and then click the above link**

**to download the complete manual.**

**Thank you so much for reading**