

Serial Numbers

When working on machines or components that are covered by warranty, it is **IMPORTANT** that you include the machine's Product Identification Number and the component serial number on the warranty claim form.

The location of component serial number plates are shown below.

MX,1025FT,A4 -19-15JAN91-1/1

Product Identification Number Location

The machine's product identification number plate (A) is located on the right-hand side of the front support.

A—Product Identification Number Plate



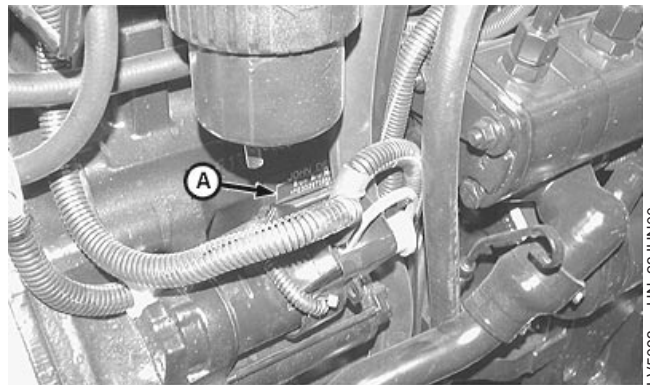
LV093 -UN-21NOV91

AG,OUO1085,16 -19-31JUL00-1/1

Engine Serial Number Location

The engine serial number plate (A) is located on the right-hand side of the engine block, between the starter and the hydraulic pump.

A—Engine Serial Number Plate



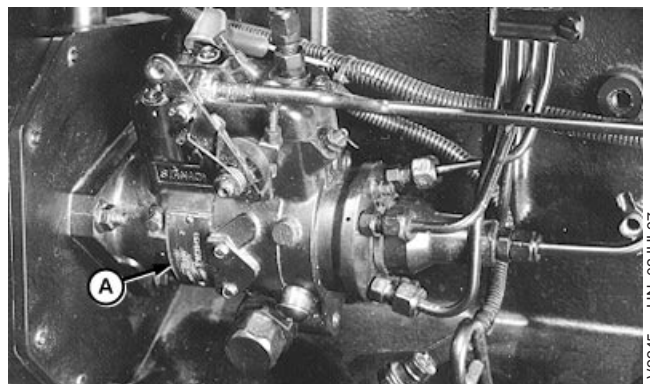
LV5093 -UN-23JUN00

AG,OUO1085,17 -19-31JUL00-1/1

Fuel Injection Pump Serial Number Location

The fuel injection pump serial number plate (A) is located on the side of the pump.

A—Fuel Injection Pump Serial Number Plate



LV2245 -UN-02JUL97

AG,OUO1085,18 -19-31JUL00-1/1

Alternator Serial Number Location

The alternator serial number plate (A) is located on the side of the housing.

A—Alternator Serial Number Plate



LV097 -UN-21NOV91

AG.OUO1085,19 -19-31JUL00-1/1

Power Steering Valve Serial Number Location

The power steering valve serial number plate (A) is located on the bottom of the valve.

A—Power Steering Valve Serial Number Plate



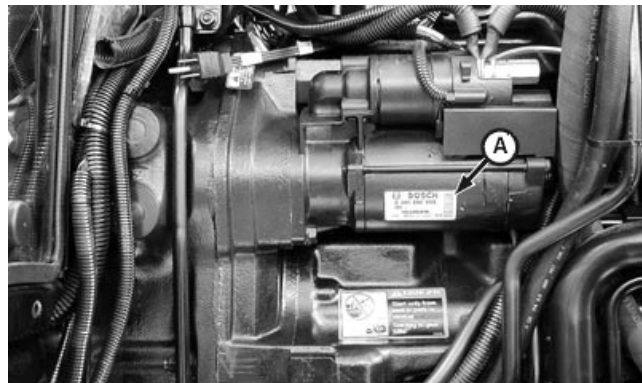
LV098 -UN-21NOV91

AG.OUO1032,2849 -19-18JAN00-1/1

Starter Serial Number Location

The starter serial number plate (A) is located on the side of the starter housing.

A—Starter Serial Number Plate



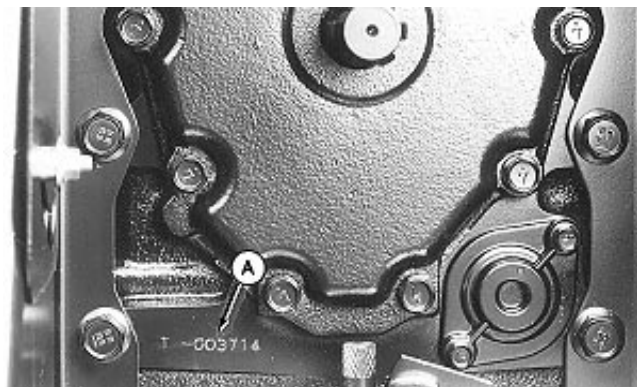
LV5286 -UN-13SEP00

AG.OUO1085,20 -19-31JUL00-1/1

Transmission Serial Number Location

The transmission (drive train) serial number (A) is located at the rear of the machine on the bottom left-hand corner of the differential housing.

A—Transmission Serial Number



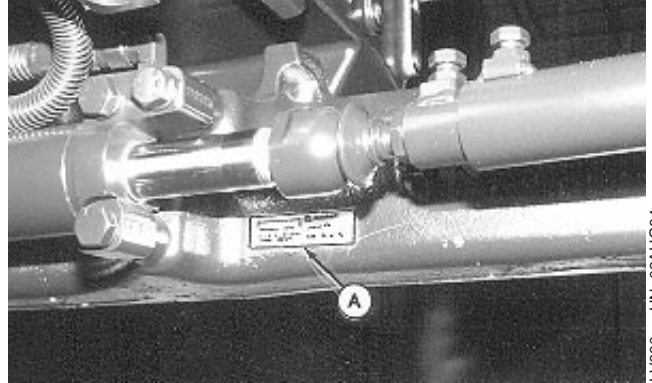
LV629 -UN-17JUN94

AG.OUO1085,21 -19-31JUL00-1/1

Front Axle (2WD) Serial Number Location

The 2WD front axle serial number plate (A) is located on the rear right-hand side of the axle.

A—Front Axle Serial Number Plate



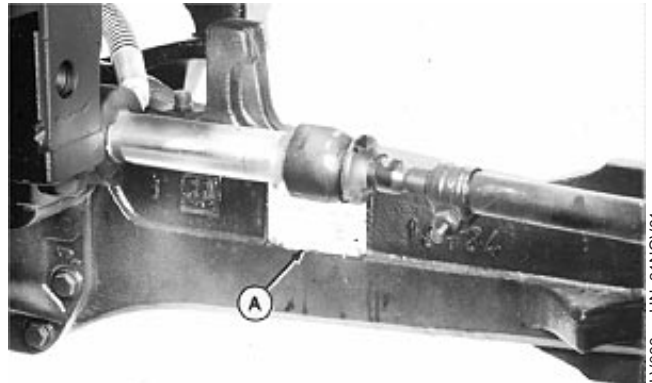
LV630 -UN-02AUG94

AG,OUO1085,22 -19-31JUL00-1/1

Mechanical Front Wheel Drive (MFWD) Serial Number Location

The MFWD serial number plate (A) is located on the rear side of the right-hand axle housing.

A—MFWD Serial Number Plate



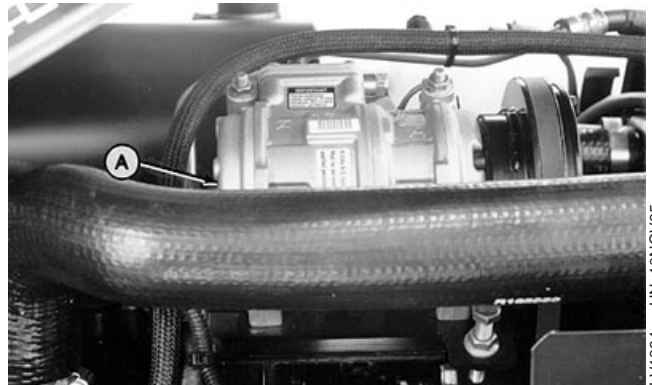
LV099 -UN-21NOV91

AG,OUO1085,23 -19-31JUL00-1/1

Air Conditioning Compressor Serial Number Location

The air conditioning compressor serial number plate (A) is located on the rear of the housing.

A—Air Conditioning Compressor Serial Number Plate



LV1384 -UN-10NOV95

AG,OUO1085,24 -19-31JUL00-1/1



Suggest:

If the above button click is invalid.

Please download this document

first, and then click the above link

to download the complete manual.

Thank you so much for reading