

## SERIAL NUMBERS

When working on machines or components that are covered by warranty, it is **IMPORTANT** that you include the machine's Product Identification Number and the component serial number on the warranty claim form.

The location of component serial number plates are shown below.

MX,1025FT,A4 -19-03MAR98

## PRODUCT IDENTIFICATION NUMBER LOCATION

The machine's product identification number plate (A) is located on the right-hand side of the front support.

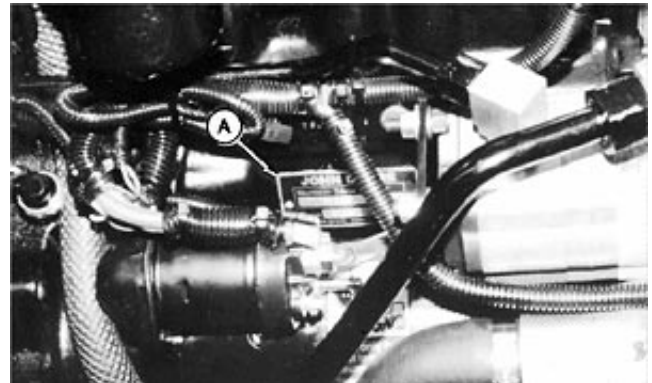


LV093 -UN-21NOV91

LV,1025HA,A1 -19-14OCT91

## ENGINE SERIAL NUMBER LOCATION

The engine serial number plate (A) is located on the right-hand side of the engine block, between the starter and the hydraulic pump.

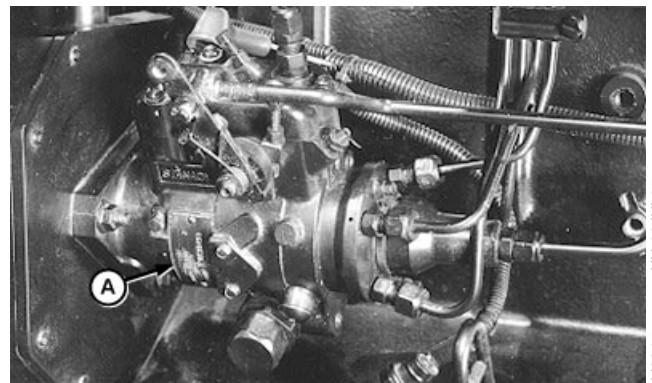


LV094 -UN-21NOV91

LV,17161025,A2 -19-02MAR98

## FUEL INJECTION PUMP SERIAL NUMBER LOCATION

The fuel injection pump serial number plate (A) is located on the side of the pump.



LV2245 -UN-02JUL87

LV,17161025,A3 -19-02MAR98

### ALTERNATOR SERIAL NUMBER LOCATION

The alternator serial number plate (A) is located on the side of the housing.



LV,1025HA,A4 -19-14OCT91

LV097 -UN-21NOV91

### POWER STEERING VALVE SERIAL NUMBER LOCATION

The power steering valve serial number plate (A) is located on the bottom of the valve.

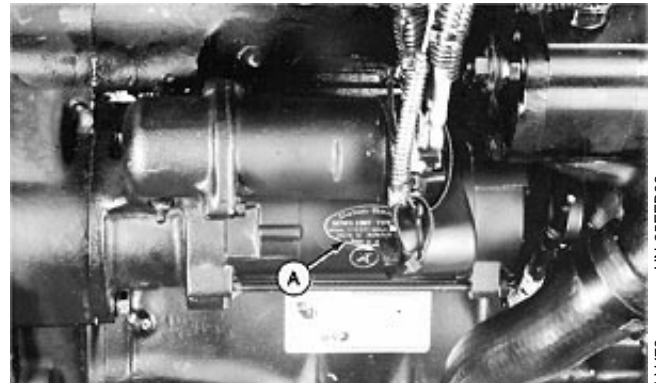


LV,1025HA,A5 -19-05MAR92

LV098 -UN-21NOV91

### STARTER SERIAL NUMBER LOCATION

The starter serial number plate (A) is located on the side of the starter housing.



LV,1025HA,A6 -19-02MAR98

LV472 -UN-25FEB92

### TRANSMISSION SERIAL NUMBER LOCATION

The transmission (drive train) serial number (A) is located at the rear of the machine on the bottom left-hand corner of the differential housing.

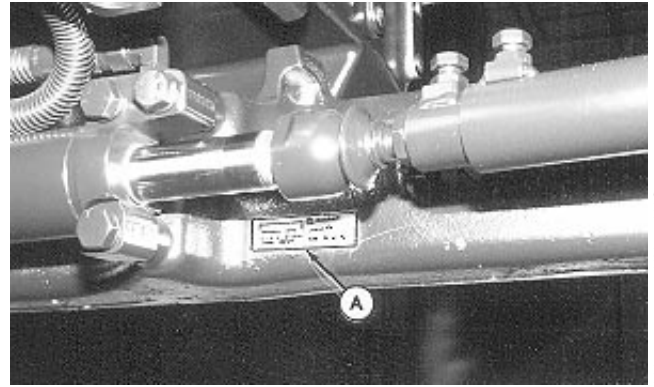


LV,1025HA,A8 -19-27JUN94

LV629 -UN-17JUN94

### FRONT AXLE (2WD) SERIAL NUMBER LOCATION

The 2WD front axle serial number plate (A) is located on the rear right-hand side of the axle.

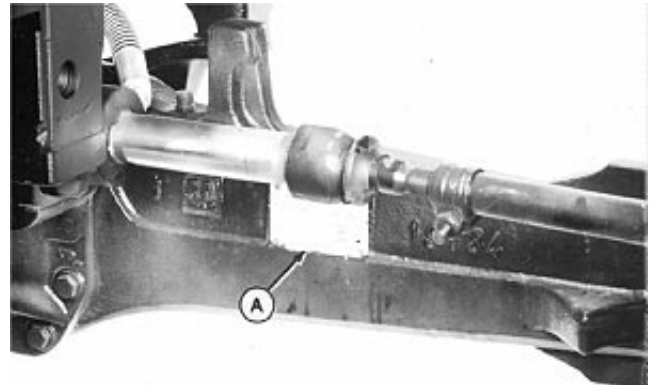


LV,1025HA,A9 -19-02MAR98

10  
25  
3  
-UN-02AUG94  
LV630

### MECHANICAL FRONT WHEEL DRIVE (MFWD) SERIAL NUMBER LOCATION

The MFWD serial number plate (A) is located on the rear side of the right-hand axle housing.

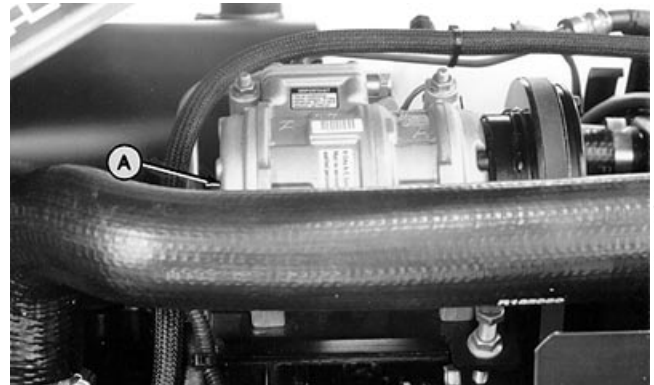


LV,1025HA,A10 -19-02MAR98

-UN-21NOV91  
LV099

### AIR CONDITIONING COMPRESSOR SERIAL NUMBER LOCATION

The air conditioning compressor serial number plate (A) is located on the rear of the housing.



LV,1025HA,A11 -19-02MAR98

-UN-10NOV95  
LV1384



**Suggest:**

**If the above button click is invalid.**

**Please download this document**

**first, and then click the above link**

**to download the complete manual.**

**Thank you so much for reading**