

SERIAL NUMBERS

When working on machines or components that are covered by warranty, it is IMPORTANT that you include the tractor Product Identification Number and the component serial number on the warranty claim form.

The location of component serial number plates are shown below.

MX,M21,1030R,1 -19-22APR85

PRODUCT IDENTIFICATION NUMBER

NOTE: All identification number plates are located on the pedestal. On some models, the plate is on the right-hand side. On others, front top left corner.



M34494
-UN-08NOV89

MX,15901030,1 -19-12MAY95

ENGINE SERIAL NUMBER

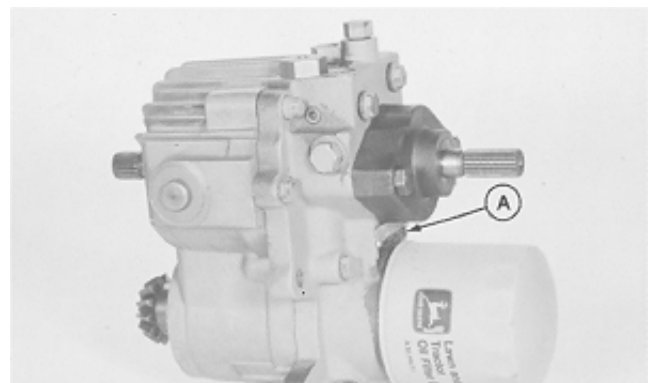


M34495
-UN-08NOV89

MX,15911030,1 -19-13JUL95

TRANSMISSION SERIAL NUMBER

Serial number plate (A) location.

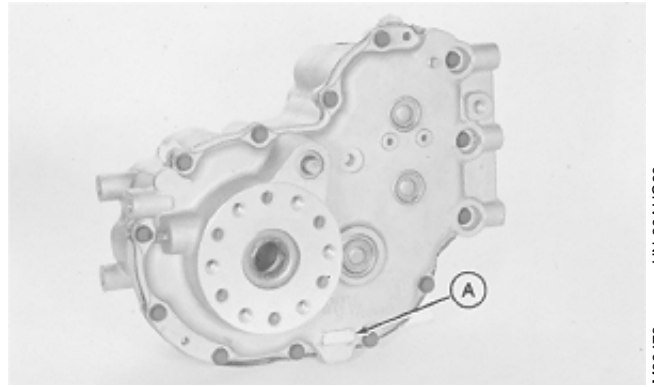


M38478
-UN-29AUG88

MX,15901030,3 -19-12MAY95

DIFFERENTIAL SERIAL NUMBER

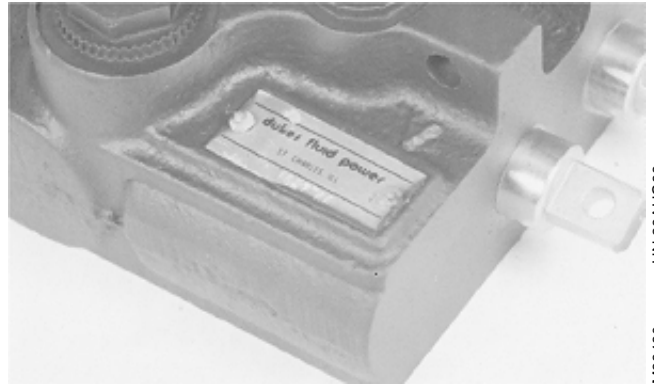
Serial number plate (A) location.



M38479 -UN-29AUG88

MX,15901030,4 -19-12MAY95

CONTROL VALVE SERIAL NUMBER



M38480 -UN-29AUG88

MX,15901030,5 -19-12MAY95

Section 20 ENGINE REPAIR

Contents

Page

Group 05—Engine—322

Repair—Use CTM12	20-05-1
Remove and Install	20-05-1

Group 06—Engine—330, 332 and 430

Repair—Use CTM3	20-06-1
Remove and Install—330 and 332	20-06-1
Remove—430	20-06-4
Install—430	20-06-8

20

YANMAR GASOLINE ENGINE REPAIR—USE CTM12

For complete repair information, the component technical manual (CTM) is also required. Use the component technical manual in conjunction with this machine manual.



MX,15912005,1 -19-13JUL95

TS225

-UN-17JAN89

20
05

REMOVE AND INSTALL ENGINE—322

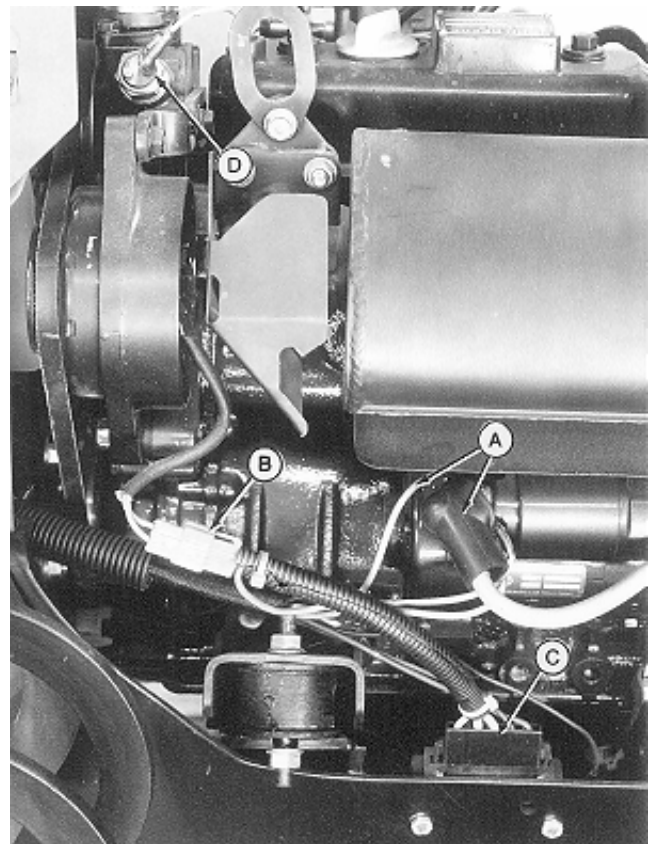
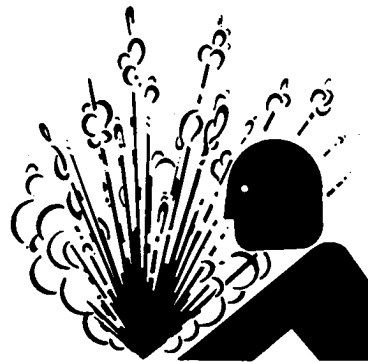
1. Remove grille, side panels, battery, battery base and belly screen.
2. Disconnect headlight and hour meter leads.
3. Remove hood, hood support and battery base support.

N CAUTION: Explosive release of fluids from pressurized cooling system can cause serious burns.

Shut off engine. Only remove filler cap when cool enough to touch with bare hands. Slowly loosen cap to first stop to relieve pressure before removing completely.

4. Drain radiator. Approximate capacity is 2.8 L (3 U.S. qt).
5. Disconnect items (A—D).

- A—Starter Cable and Leads
- B—Alternator Lead
- C—Voltage Regulator Lead
- D—Temperature Coolant Lead



-UN-23AUG88

TS281

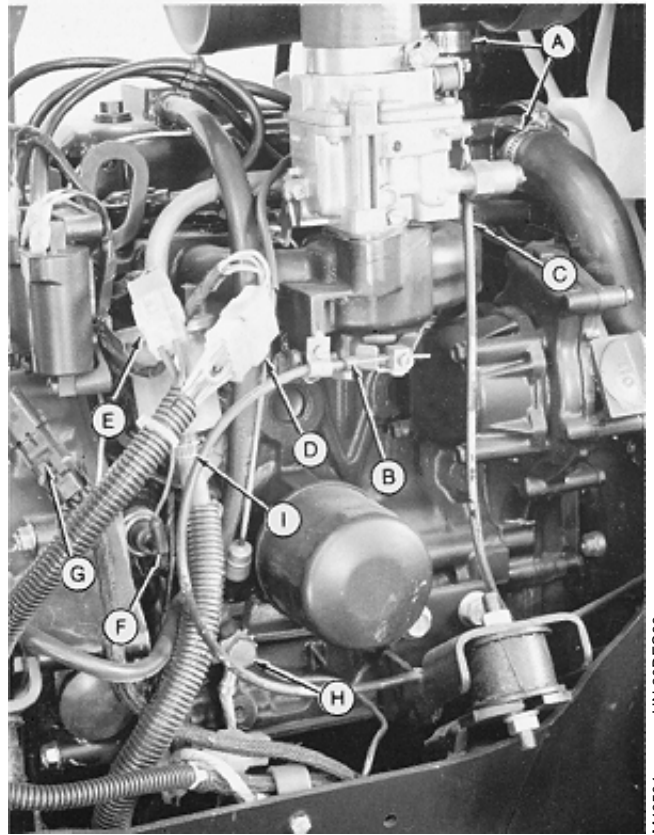
-UN-15DEC94

M77901

MX,15912005,2 -19-13JUL95

6. Disconnect items (A—I).

- A—Radiator Hoses
- B—Throttle Cable
- C—Choke Cable
- D—Ignition Coil Lead
- E—Ignition Trigger Lead
- F—Oil Pressure Sensor Lead
- G—PTO Clutch Lead
- H—Wire Harness Ground and Frame to Engine Ground
- I—Fuel Line at Filter

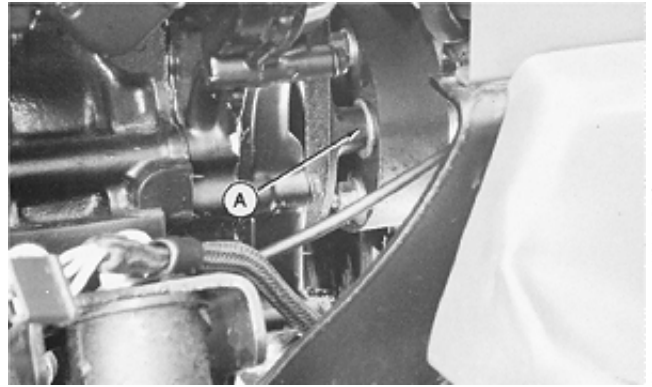


M49504 -JUN-20DEC89

MX,5M3,2005K,H -19-18DEC87

20
05
2

7. Remove cap screws (A) holding rubber drive shaft isolator to engine.
8. Loosen cap screws at universal joint at transmission input shaft and slide drive shaft toward transmission. This will eliminate any preload on the drive shaft when reassembling.
9. Remove engine mounting nuts.
10. Attach load positioning sling to lift eyes and remove engine.
11. Make repairs as necessary. (See CTM12.)
12. Installation is done in the reverse order of removal.



M49505 -UN-20DEC89

20
05
3

- Tighten engine mounting nuts to specifications.
- When connecting drive shaft, tighten cap screws to specifications.
- Close drain valve and fill radiator with proper coolant until coolant is 13—25 mm (0.500—1 in.) below bottom of filler neck. (See Engine Coolant in Section 10, Group 25.)

NOTE: On Early models, the choke is activated manually by a cable. On Later models, the choke operates automatically.

- Early models; Adjust choke cable. (See Section 220, Group 10.)
- Adjust slow and fast idle. (See Section 220, Group 10.)

TORQUE SPECIFICATIONS

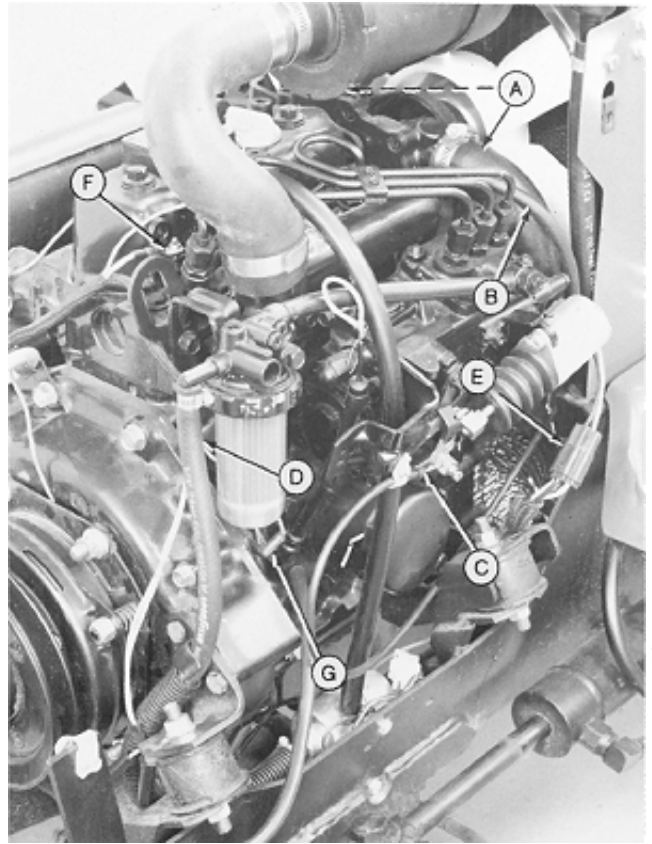
Engine Mounting Nuts	49 N·m (36 lb-ft)
Drive Shaft	
Engine Mounting Cap Screws	37 N·m (27 lb-ft)
Universal Joint Cap Screws	60 N·m (45 lb-ft)

MX,15912005,3 -19-13JUL95

NOTE: On Early 330, fuel shutoff solenoid is activated manually by a cable. On 332 and Later 330, fuel shutoff solenoid is activated electronically.

6. Disconnect items (A—G).

- A—Radiator Hoses
- B—Return Fuel Line
- C—Throttle Cable
- D—Fuel Pump Hose
- E—Fuel Shutoff Solenoid Connector (332, Later 330)
—Fuel Shutoff Solenoid Cable (Early 330)
- F—Glow Plug Lead
- G—Oil Pressure Sensor Lead



M49507 -JUN-20DEC89

MX,15912006,3 -19-13JUL95

20
06
2



Suggest:

If the above button click is invalid.

Please download this document

first, and then click the above link

to download the complete manual.

Thank you so much for reading