

Group IV PREDELIVERY, DELIVERY, AND AFTER-SALE SERVICES

TEMPORARY STORAGE

After receiving your scraper from the factory and before putting the machine into temporary storage, make the following checks and services:

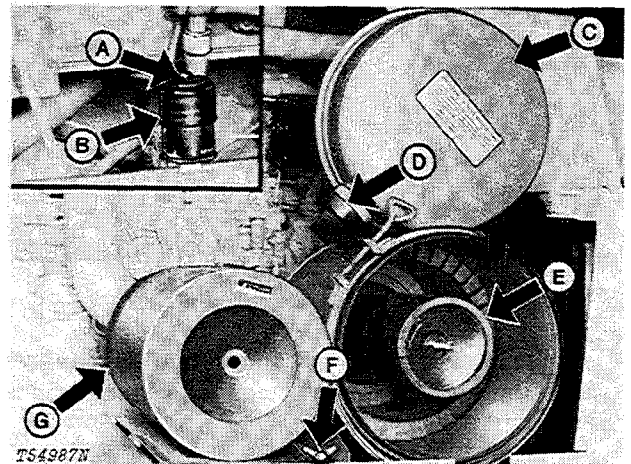
1. Check the battery electrolyte level. Charge the battery, if necessary.
2. Check the level of the coolant in the radiator. The coolant must be 1-1/2 in. (38 mm) below the filler neck.
3. Fill the fuel tank.
4. Check the crankcase oil level. Oil must be between marks on the dipstick after the engine has been stopped for 10 minutes.
5. Release hydraulic pressure by stopping the engine, lowering the bowl, and operating the control levers until the bowl does not move.

PREDELIVERY SERVICE

The service technician must carefully check and service the machine before the dealer delivers it to the customer. When the customer receives a machine that is correctly prepared, the customer is well-satisfied. For these reasons, correct predelivery service is very important to the dealer and the customer.

Use the following list when getting a unit ready for delivery to the customer.

1. Air Cleaner



- | | |
|-------------------------|-------------------|
| A—Reset Button | E—Safety Element |
| B—Restriction Indicator | F—Wing Nut |
| C—Filter Cover | G—Primary Element |
| D—Unloading Valve | |

Fig. 1-Air Cleaner Components

Check the restriction indicator (B). If the red signal can be fully seen, check the air intake system for a restriction.

Air cleaner checked	Yes	No
---------------------	-----	----

2. Air Intake Hoses

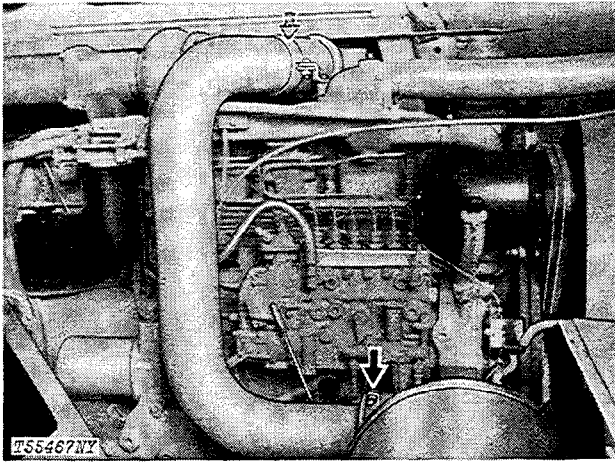
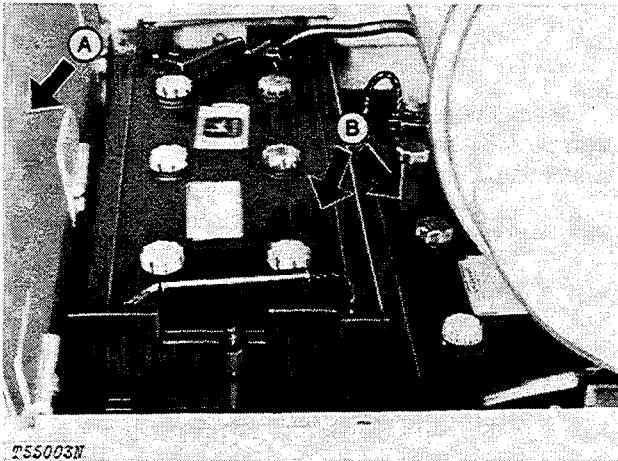


Fig. 2-Air Intake Hose Connections

Inspect clamps on hoses connecting the air cleaner and the engine. Tighten the hose clamps. Inspect the hoses for cracks.

Air intake hoses checked Yes No

3. Batteries



A—Cover

B—Batteries

Fig. 3-Batteries

Check the electrolyte level of the batteries. If distilled water is not available, use clean soft water. Do not use hard water. Remove dirt from the top of the batteries with a damp cloth. Put petroleum jelly on terminals.

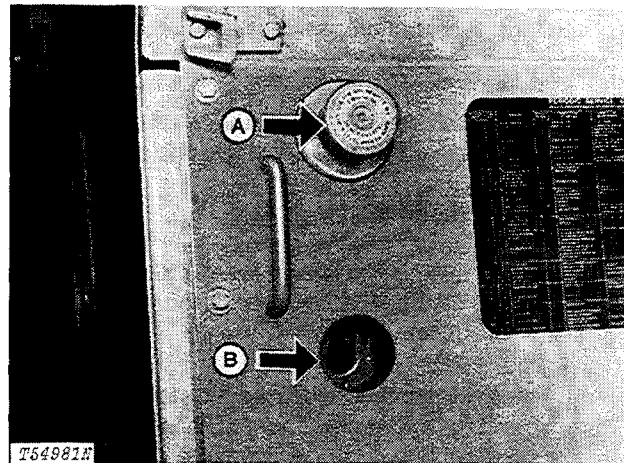
IMPORTANT: Never add water to the batteries in freezing weather unless the engine will be run 2 or 3 hours.

Check battery connections.

Punch the date code on the battery.

Batteries checked Yes No

4. Hydraulic Reservoir Oil Level



A—Filler Cap

B—Oil Level Window

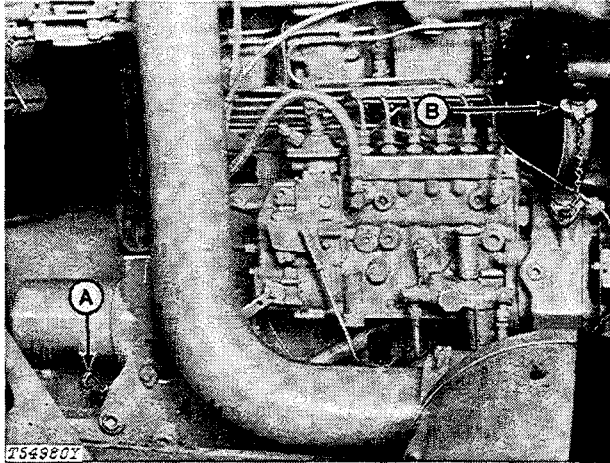
Fig. 4-Hydraulic Reservoir

Check the oil level of the hydraulic system. Oil level must be halfway up the oil level window when the bowl cutting edge is on the ground, the sliding floor is forward, and the ejector gate is back.

To add oil, remove the filler cap (A). Add oil specified on page I-V-3.

Hydraulic oil checked Yes No

5. Crankcase Oil Level



A—Dipstick

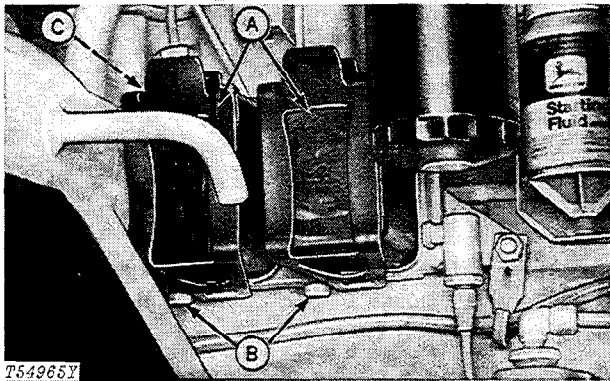
B—Filler Cap

Fig. 5-Crankcase Oil Level

Check the oil level when the scraper is on a level surface. Wait ten minutes after stopping the engine before checking the oil level. If the oil level is at or below the bottom mark on the dipstick, add oil specified on page I-V-3. Do not operate the engine with the oil level below the bottom mark. Keep the oil level between the marks on the dipstick.

Crankcase oil level checked	Yes	No
Oil added	_____	qts. (L)

6. Fuel Filters



A—Fuel Filters

B—Drain Screws

C—Bleed Screw

Fig. 6-Fuel Filter Drain Screws

Check the fuel filters. Drain sediment, if necessary.

Loosen the drain screws.

Drain all water and sediment.

Tighten the drain screws.

Remove air from the fuel system.

Removing Air From the Fuel System

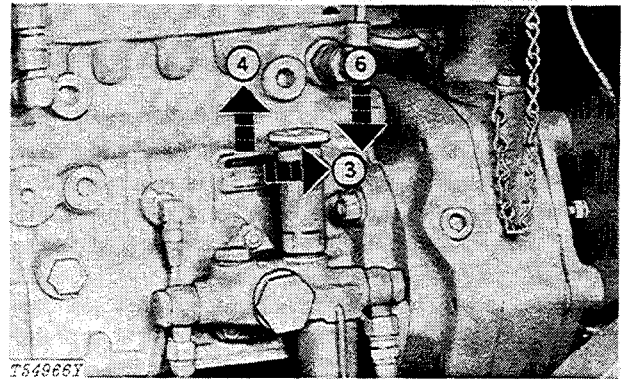


Fig. 7-Removing Air From The Fuel System

- 1 - Be sure there is enough fuel in the fuel tank.
- 2 - Loosen the bleed screw.
- 3 - Turn the hand primer counterclockwise to loosen it.
- 4 - Pull the hand primer up. Pump the primer until a solid stream of fuel, free from air bubbles, comes from the bleed screw.
- 5 - Tighten the bleed screw.
- 6 - Push the hand primer down completely. Turn the knob clockwise by hand to tighten it.

Fuel filters checked	Yes	No
Air removed from system	Yes	No

7. Radiator

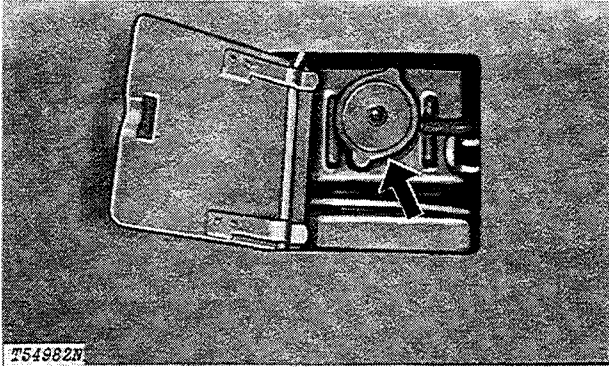


Fig. 8-Radiator Cap

CAUTION: Do not remove the radiator filler cap unless you can hold your hand on the radiator tank. First, loosen the cap slowly to the stop. Then release all pressure in the cooling system before removing the cap.

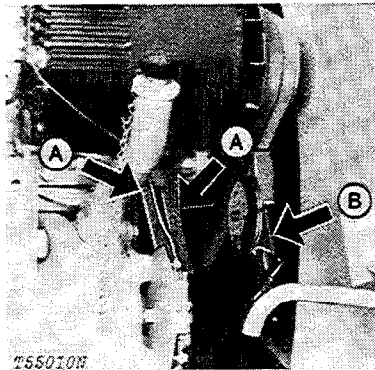
Check the level of the coolant in the radiator. Coolant must be 1-1/2 in. (38 mm) below the bottom of the filler neck. Use clean water for warm weather. Use a solution of 50% clean water and 50% permanent anti-freeze (ethylene glycol with approved rust inhibitor) for cold weather.

Check the cooling system for loose connections and leaks. Remove trash from the radiator.

Be sure the shut-off valves on the coolant conditioner-filter are open.

Coolant level checked	Yes	No
Shut-off valves open	Yes	No

8. Belt Tension



A—Fan Belts B—Strand Tension Gauge On Alternator Belt

Fig. 9-Engine Belts

Strand Tension Gauge

Belts must have 90 lb. (400 N) (41 kg) strand tension. Check the front fan belt only.

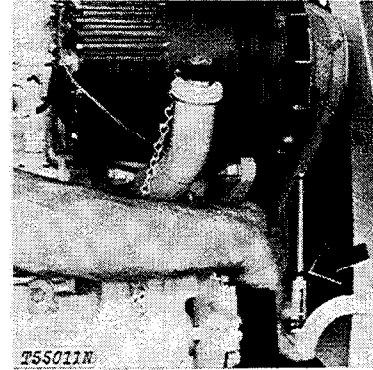


Fig. 10-Tension Tester On Alternator Belt

Tension Tester

A 20 lb. (89 N) (9 kg) force halfway between pulleys must move the belt 1/2 in. (13 mm).

Immediately after stopping the engine (run the engine 5 minutes or more), check the belt tension. If tension is less than 50 lb. (223 N) (23 kg), wait ten minutes. Then change tension to 90 lb. (400 N) (41 kg).

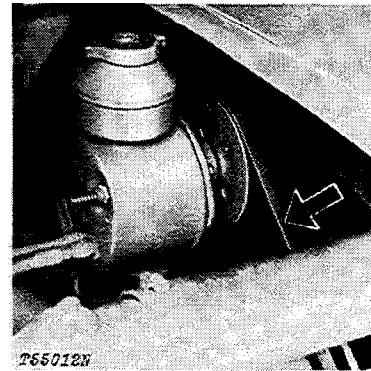


Fig. 11-Power Steering Belt

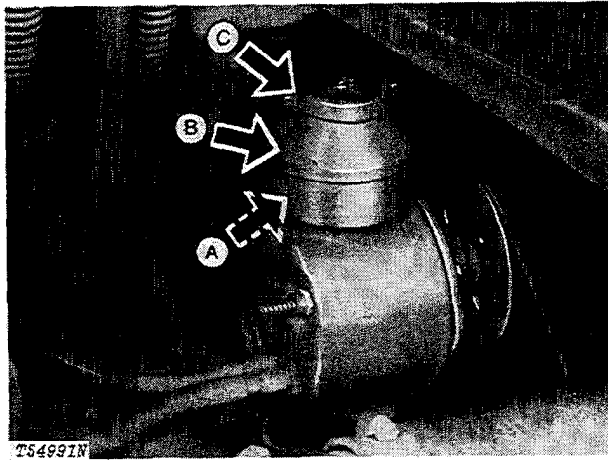
A 14 lb. (62 N) (6 kg) force halfway between pulleys must move the power steering pump belt 1/2 in. (13 mm).

NOTE: On units with air conditioning, a 10 to 15 lb. (45 to 67 N) (5 to 7 kg) force halfway between pulleys must move the compressor belt 1/2 in. (13 mm).

See page I-IV-24 for adjustment.

Belt tension checked	Yes	No
----------------------	-----	----

9. Power Steering Pump Oil Level



A—Full Line
 B—Power Steering Pump Reservoir
 C—Filler Cap

Fig. 12—Power Steering Pump Reservoir

Check the oil level when the oil is cold.

Oil must be to the full line on the side of the reservoir.

If not, remove the filler cap. Add oil specified on page I-V-3.

Install the filler cap.

Oil level checked _____ Yes No
 Oil added _____ qts. (L)

10. Fuel Tank

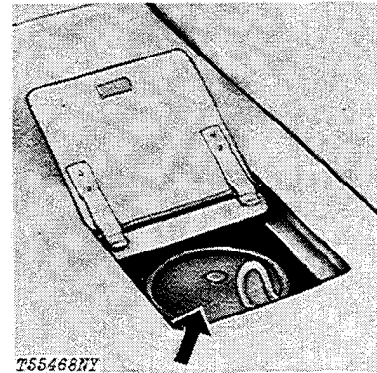
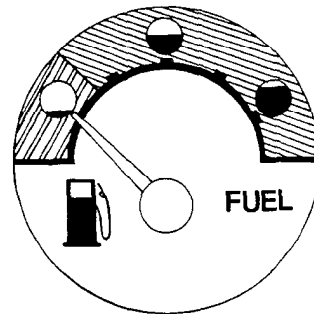


Fig. 13—Fuel Tank

Fill the fuel tank with correct fuel. Check the action of the fuel gauge (Fig. 14).

Fuel tank filled _____ Yes No
 Fuel gauge checked _____ Yes No

11. Gauges, Switches, and Indicator Lights



T40227N

Fig. 14—Fuel Level Gauge

The fuel gauge shows the amount of fuel in the fuel tank.



Suggest:

If the above button click is invalid.

Please download this document

first, and then click the above link

to download the complete manual.

Thank you so much for reading