

## Group 25 SEPARATION

### OPERATOR'S CAB

When the windrower is equipped with a cab, it may be necessary to remove the cab in order to service the windrower or the cab components.

#### REMOVAL

Disconnect all electrical wires and remove all bolts that mount the cab to the operator's platform. If air conditioning is installed, the hoses must be disconnected.

**⚠ CAUTION:** When disconnecting the refrigerant hoses, first discharge the compressor or complete system as explained on page 80-10-10. Follow all safety precautions listed to avoid personal injury.

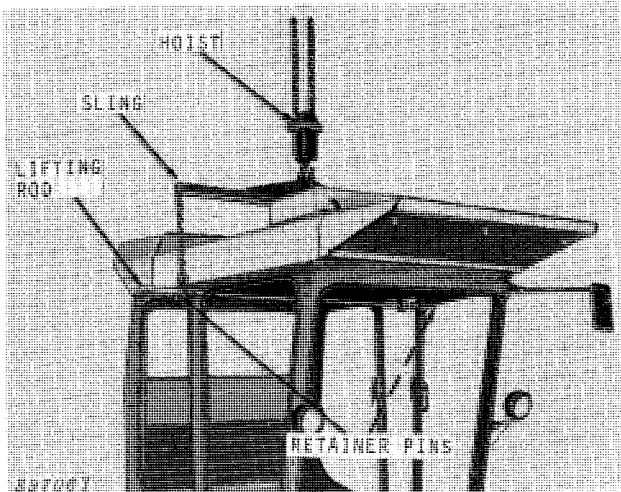


Fig. 1-Removing Operator's Cab

Open cab door and secure in this position.

Remove push-out plug from right hand side of cab and install lifting rod (Fig. 1). The hex. nut on the rod must engage the channel along the top of the door opening. This will prevent the lifting rod from sliding out of the cab, which would let the cab fall, causing serious damage. See "Making Special Tools" on page 10-25-2, for instructions to make the lifting rod and sling.

Lift the cab off the windrower with the lifting sling and a hoist. Secure the lifting sling on the lifting rod with a retainer pin at each end of rod. Make the lifting sling as instructed on the next page.

**⚠ CAUTION:** When lifting the cab, be certain to install a retainer pin at each end of lifting rod to prevent accidental dropping of the cab. Personal injury and/or damage to cab could result.

The hoist must have a 1000 lb (453.6 kg) minimum lifting capacity.

#### INSTALLATION

Install the cab by reversing the procedure used to remove it. Connect all electrical wires and refrigerant hoses.

**IMPORTANT:** Refer to Section 80 - OPERATOR'S CAB for instructions to charge the air conditioning system, and for pressurizer system service instructions.

## MAKING SPECIAL TOOLS

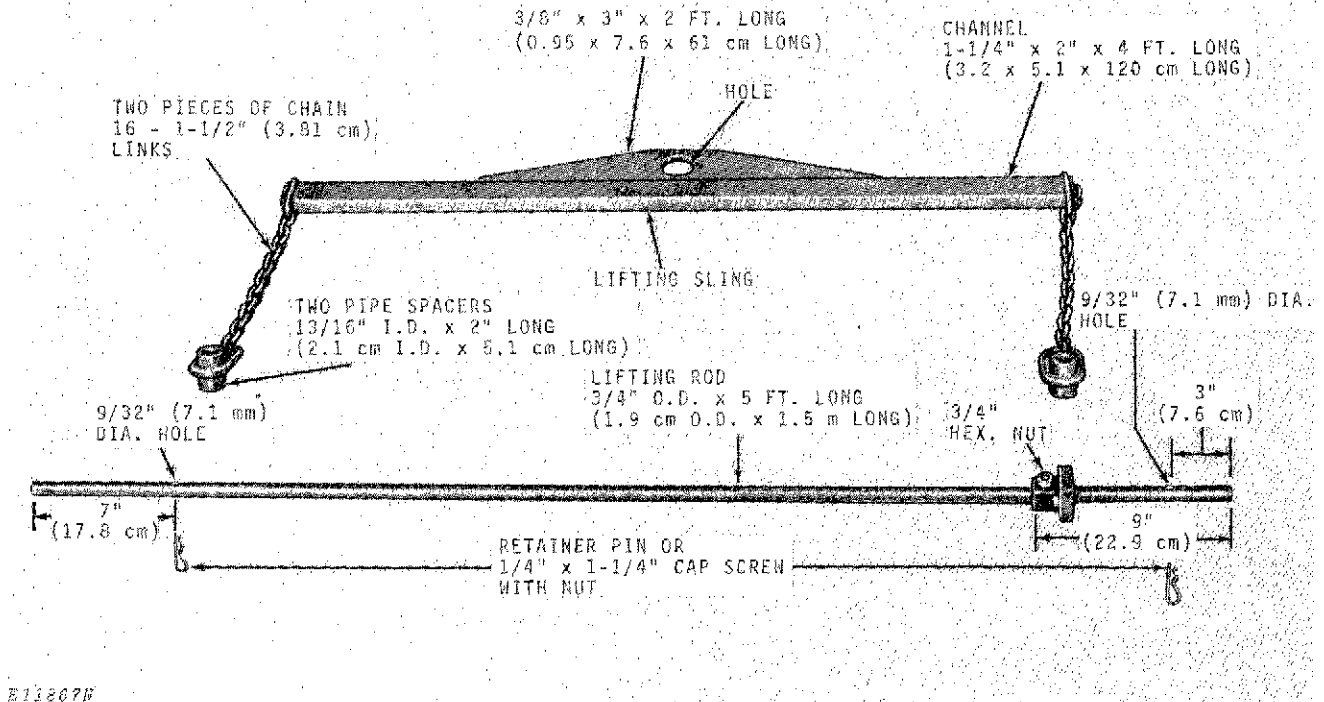


Fig. 2-Making Operator's Cab Lifting Rod and Sling

Weld hex. nut to the lifting rod (Fig. 2).

Weld the lifting sling as follows:

1. Pipe spacer to each length of chain.
2. A length of assembled chain to each end of channel.
3. Plate centered on top of channel.

## ENGINE

### REMOVAL

**IMPORTANT:** Be certain to plug all openings and cap all hoses or lines that are disconnected to prevent contamination of a particular system.

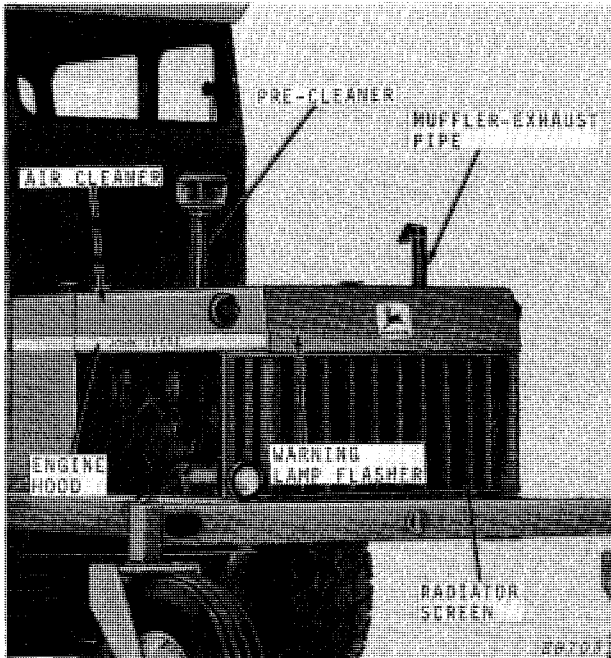


Fig. 3-Removing Air Cleaner, Pre-Cleaner, Muffler, Radiator Screen, and Engine Hood

Remove pre-cleaner, air cleaner, exhaust pipe, muffler, and radiator screen (Fig. 3).

Disconnect warning lamp wires from flasher.

Remove engine hood.

If air conditioning compressor (Fig. 4) is installed on the left-hand side of the engine, the compressor must be removed and secured to the outside of the main frame member. Do not disconnect the refrigerant hoses.

**IMPORTANT:** Be careful not to damage refrigerant hoses and compressor assembly.

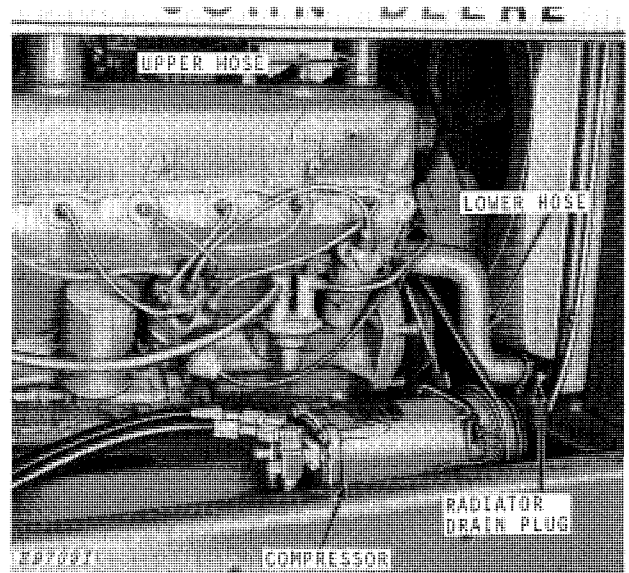
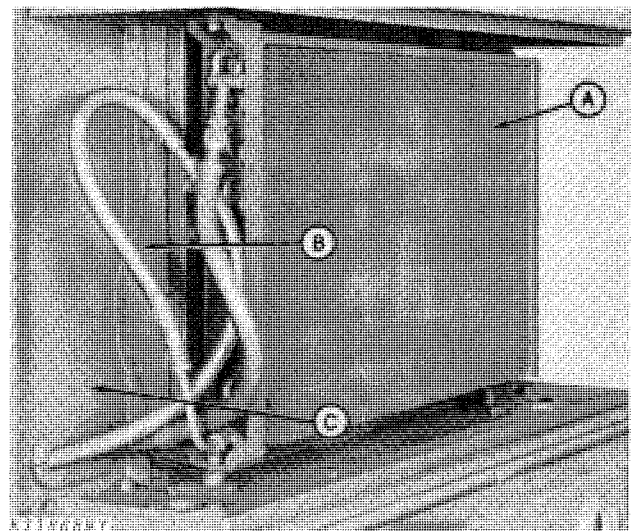


Fig. 4-Removing Compressor, Draining Cooling System, and Removing Radiator Hoses

Drain cooling system.

Disconnect the upper and lower radiator hoses (Fig. 4).



A—Condenser B—Condenser Mounting C—Shield Support

Fig. 5-Removing Condenser

If air conditioning system has condenser (A) mounted behind the radiator (Fig. 5) it will be necessary to remove the condenser.

**IMPORTANT:** Do not disconnect the refrigerant hoses.



**Suggest:**

**If the above button click is invalid.**

**Please download this document**

**first, and then click the above link**

**to download the complete manual.**

**Thank you so much for reading**

Remove spring from right-hand side of condenser.

Remove two mounting bolts from condenser mounting (B) and remove condenser. Lay to the outside of the main frame.

Remove the left-hand shield support (C) and lay with the condenser and hoses.

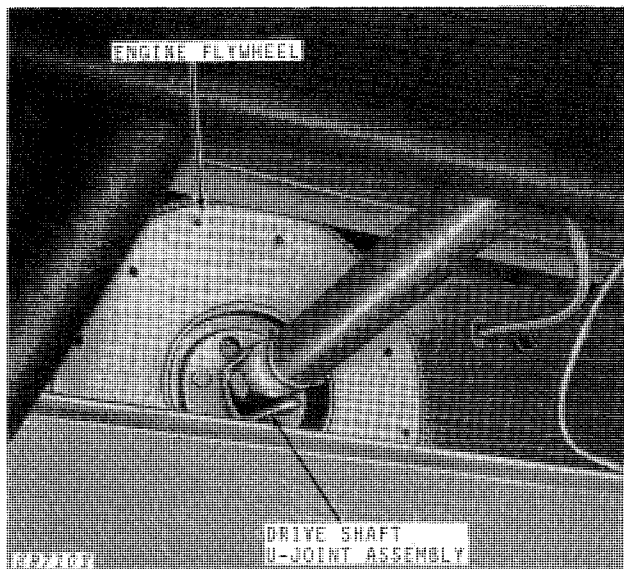


Fig. 6-Disconnecting Drive Shaft

Disconnect drive shaft (Fig. 6) from engine flywheel.

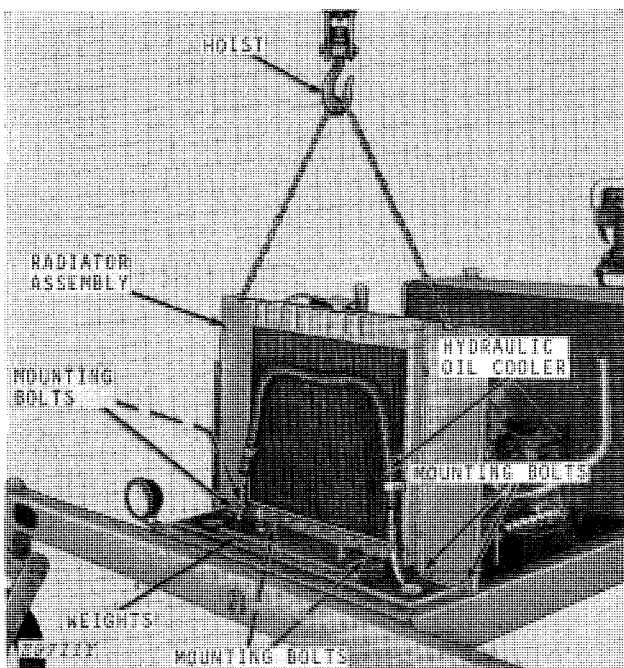


Fig. 7-Removing Radiator Assembly

Attach a chain with hoist to each side of radiator assembly (Fig. 7).

Remove the two bolts that secure the hydraulic oil cooler to radiator assembly.

Remove the four radiator mounting bolts, four bolts through the radiator side sheet on each side, and two bolts tapped into the bottom side of radiator.

*NOTE: If windrower is equipped with weights, the weights must be removed before the radiator assembly can be removed.*

Remove radiator assembly.

**IMPORTANT: Be certain to protect the radiator from damage while it is removed.**

### 2250 Windrower

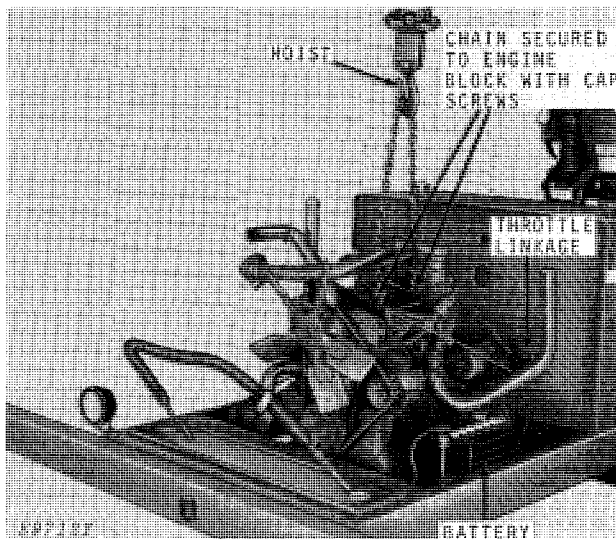


Fig. 8-Removing Engine from 2250 Windrower

Attach a chain and hoist (Fig. 8) to the engine block with two cap screws.

Disconnect battery cables and wiring harnesses from connectors.

Disconnect the throttle control linkage.

Disconnect the fuel line.

Remove the engine mounting bolts from both sides.

Lift engine out of windrower.