

Illustration 31

g01407324

63. Install retaining spring (19), spring (20), ring (21), retaining ring (22), and spring (23) into bushing (16). Install washer (18) and pilot valve (17) into bushing (16).

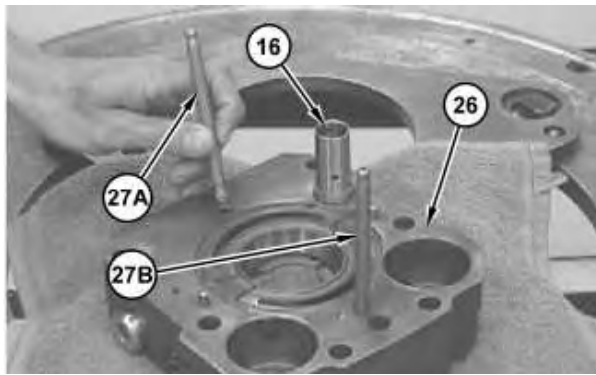


Illustration 32

g01410264



Improper assembly of parts that are spring loaded can cause bodily injury.

To prevent possible injury, follow the established assembly procedure and wear protective equipment.

64. Install bushing (16) into housing (26).
65. Install pipe (27A) and pipe (27B) into housing (26).

Note: Be sure that the correct pipe (27A) and pipe (27B) are installed into the correct cavity in housing (26).

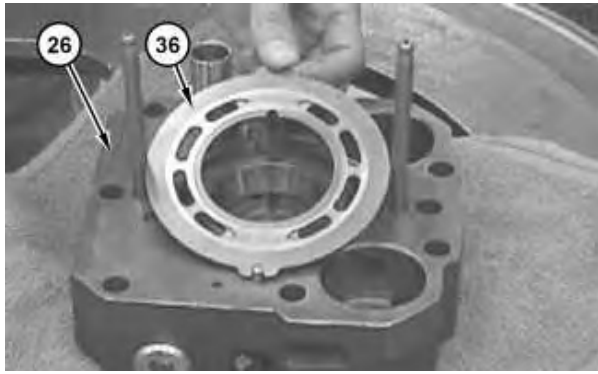


Illustration 33

g01410274

66. Install port plate (36) onto housing (26).

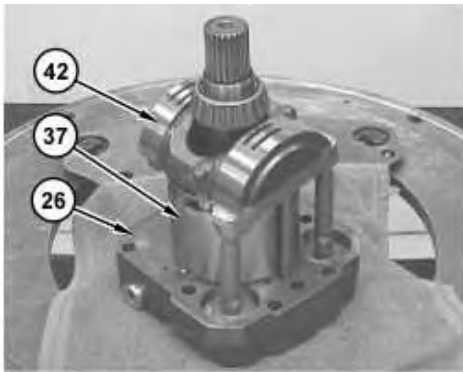


Illustration 34

g01410304

67. Install barrel assembly (37) and swashplate assembly (42) onto housing (26).

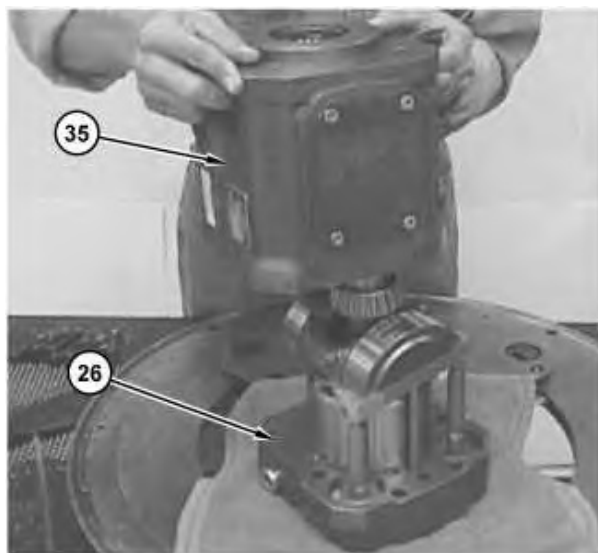


Illustration 35

g01410343

68. Apply Tooling (K) to the mating surface of housing (26). Position housing (35) onto housing (26).

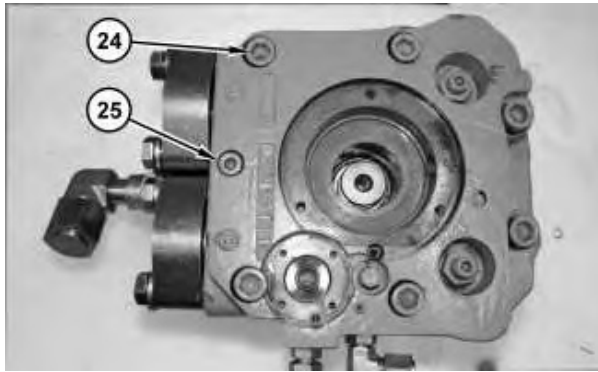


Illustration 36

g01410356

69. Reposition the wheel propel motor. Install bolts (24). Tighten bolts (24) to a torque of 87 N·m (64 lb ft). Install bolt (25). Tighten bolt (25) to a torque of 25 N·m (18 lb ft).

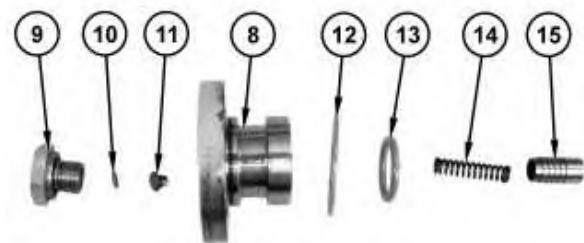


Illustration 37

g01407281

70. Install O-ring seal (12), O-ring seal (13), spring (14), and piston (15) into cover (8). Install retaining ring (11), washer (10), and plug (9) into cover (8). Tighten plug (9) to a torque of 10 N·m (89 lb in).

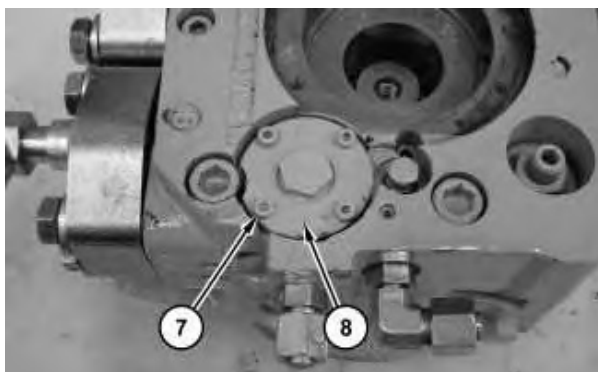


Illustration 38

g01407274



Improper assembly of parts that are spring loaded can cause bodily injury.

**Thank you very much
for your reading.**

**Please click here to buy
After you pay.**

**Then, you can
download the complete
manual instantly.
No waiting.**