

GLC40-45-55VX, GLC55SVX (F818)

SERVICE MANUAL CONTENTS

SECTION	PART NUMBER	YRM NUMBER	REV DATE
FRAME.....	524262274	0100 YRM 1243	05/14
GM 4.3L V-6 ENGINES.....	524265337	0600 YRM 1251	05/14
COOLING SYSTEM.....	524223757	0700 YRM 1123	03/13
LPG FUEL SYSTEM GM 4.3L ENGINE WITH PSI.....	550043871	0900 YRM 1556	04/14
1 AND 2 SP PS TRANSMISSION REPAIR.....	550048681	1300 YRM 1569	08/13
DRIVE AXLE AND DIFFERENTIAL ASSEMBLY REPAIR.....	524262278	1400 YRM 1246	12/13
DRIVE AXLE AND DIFFERENTIAL ASSEMBLY REPAIR.....	550055280	1400 YRM 1582	12/13
STEERING AXLE.....	524223764	1600 YRM 1133	07/13
WET BRAKES - NMHG.....	550064329	1800 YRM 1597	12/13
HYDRAULIC GEAR PUMP.....	524223766	1900 YRM 1136	04/14
HYDRAULIC CLEANLINESS PROCEDURES.....	550073240	1900 YRM 1620	12/14
MAIN CONTROL VALVE.....	524223767	2000 YRM 1137	04/14
CYLINDER REPAIR (MAST S/N A551, A555, A559, A661, A662, A663, A66, B507, B508, B509, B551, B555, B559, B562, B563, B564, B661, B662, B663, C515, C551, C555, C559, D507, D508, D509, D515, D562, D563, D564, E509, AND E564).....	524223768	2100 YRM 1139	02/14
HIGH VOLTAGE SWITCH (HVS) IGNITION.....	524208014	2200 YRM 1097	05/14
WIRE HARNESS REPAIR.....	524223769	2200 YRM 1128	12/14
USER INTERFACE.....	524223770	2200 YRM 1130	12/14
USER INTERFACE.....	524223771	2200 YRM 1131	12/14
ELECTRICAL SYSTEM.....	524223772	2200 YRM 1142	04/14
MAST REPAIRS (S/N A513, A514, A613, A614, A702, A703, A704, A705, A706, A707, A751, A752, B513, B514, B586, B587, B588, B589, B590, B591, B749, B750, B751, B752, B753, B754).....	524265342	4000 YRM 1250	02/14
METRIC AND INCH (SAE) FASTENERS.....	524150797	8000 YRM 0231	10/13
CALIBRATION PROCEDURES.....	524223780	8000 YRM 1134	12/14
DIAGRAMS AND SCHEMATICS.....	550055283	8000 YRM 1585	04/14
PERIODIC MAINTENANCE.....	550064337	8000 YRM 1598	04/14
CAPACITIES AND SPECIFICATIONS.....	550064342	8000 YRM 1599	04/14
DIAGRAMS AND SCHEMATICS.....	550096331	8000 YRM 1689	04/14
DIAGNOSTIC TROUBLESHOOTING MANUAL.....	524221866	9000 YRM 1112	12/14

Service information for Cummins diesel engines can be ordered through the Hyster Literature Distribution Center.
9000 YRM 1112 ON CD

PART NO. 550064324 (12/14)

General



WARNING

The lift truck must be put on blocks for some types of maintenance and repairs. The removal of the following assemblies will cause large changes in the center of gravity: mast, drive axle, engine and transmission, and counterweight. When the lift truck is put on blocks, put additional blocks in the following positions to maintain stability:

- Before removing the mast and drive axle, put blocks under the counterweight so the lift truck cannot fall backward.
- Before removing the counterweight, put blocks under the mast assembly so the lift truck cannot fall forward.

The surface must be solid, even, and level when the lift truck is put on blocks. Make sure any blocks used to support the lift truck are solid, one-piece units. See the procedure How to Put Lift Truck on Blocks in the Operating Manual or the Periodic Maintenance section for your lift truck.

If additional engine repairs are necessary for lift trucks covered in this manual see:

- **GM 4.3L V-6 Engines** 0600YRM1251
- **Kubota Diesel 3.8L Engines** 0600YRM1557
- **Kubota Diesel 3.6L Engine** 0600YRM1579

If additional transmission repairs are necessary for lift trucks covered in this manual see:

- **Powershift Transmission** 1300YRM1129
- **Powershift Transmission** 1300YRM1529
- **One and Two Speed Transmissions** 1300YRM1569

This section contains the description of the frame (see Figure 1 or Figure 2) and connected parts. Procedures for removing and installing the counterweight, hood, overhead guard, engine and transmission, and exhaust system are found in this section. Checks for the operator restraint system and procedures for the repair of tanks and installation of safety labels are also included.

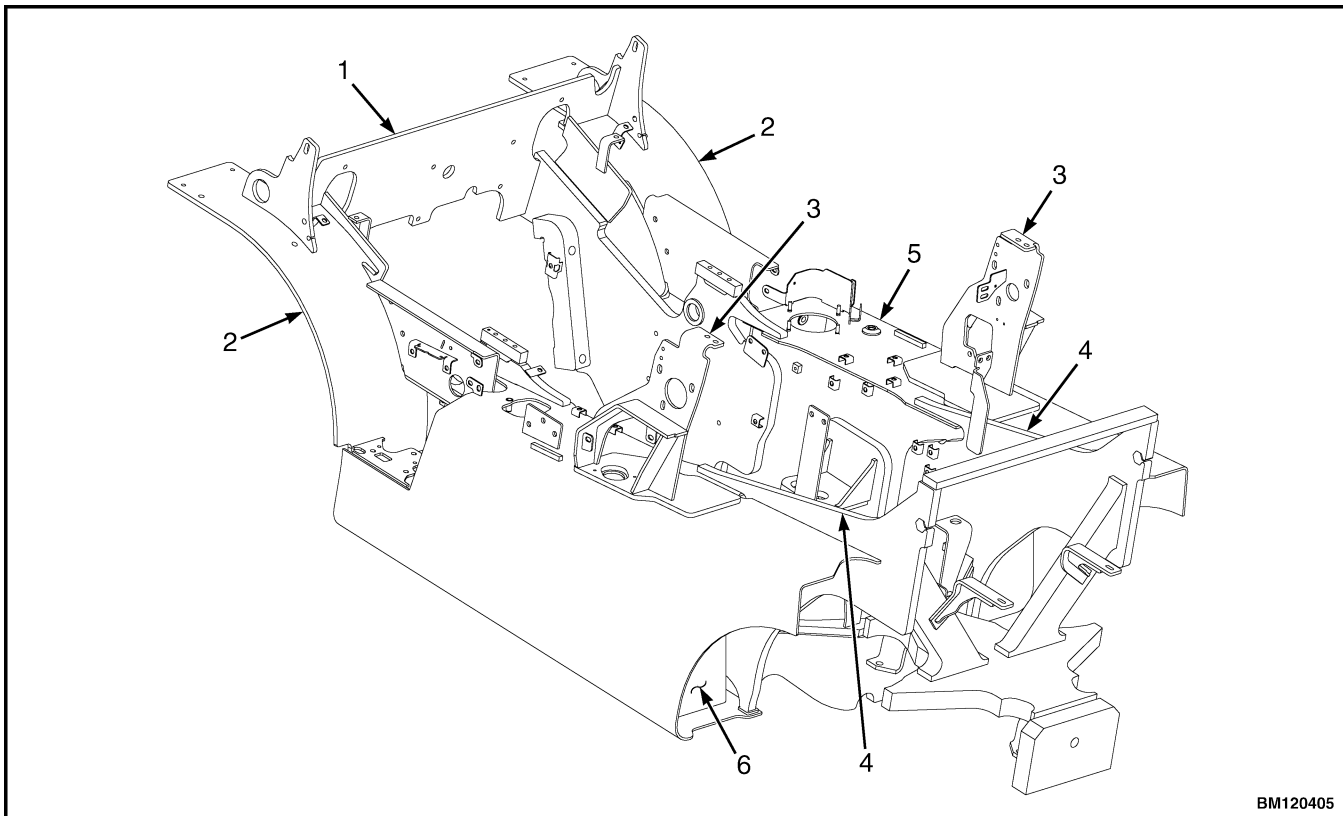
Description

The frame is one weldment and includes the hydraulic tank and fuel tank for gasoline or diesel fuel. See Figure 1 or Figure 2.

There is a counterweight for each capacity of lift truck. The counterweights are similar in appearance, but are different weights. **See Table 2.**

The muffler is fastened to the frame inside the counterweight.

The overhead guard, cowl, and hood are installed on the frame. The hood is connected to the frame with hinges. Two gas-controlled springs provide assistance when raising the hood and hold the hood in the open position. The floor plate and side covers can be removed for access to the engine, transmission, and other components.

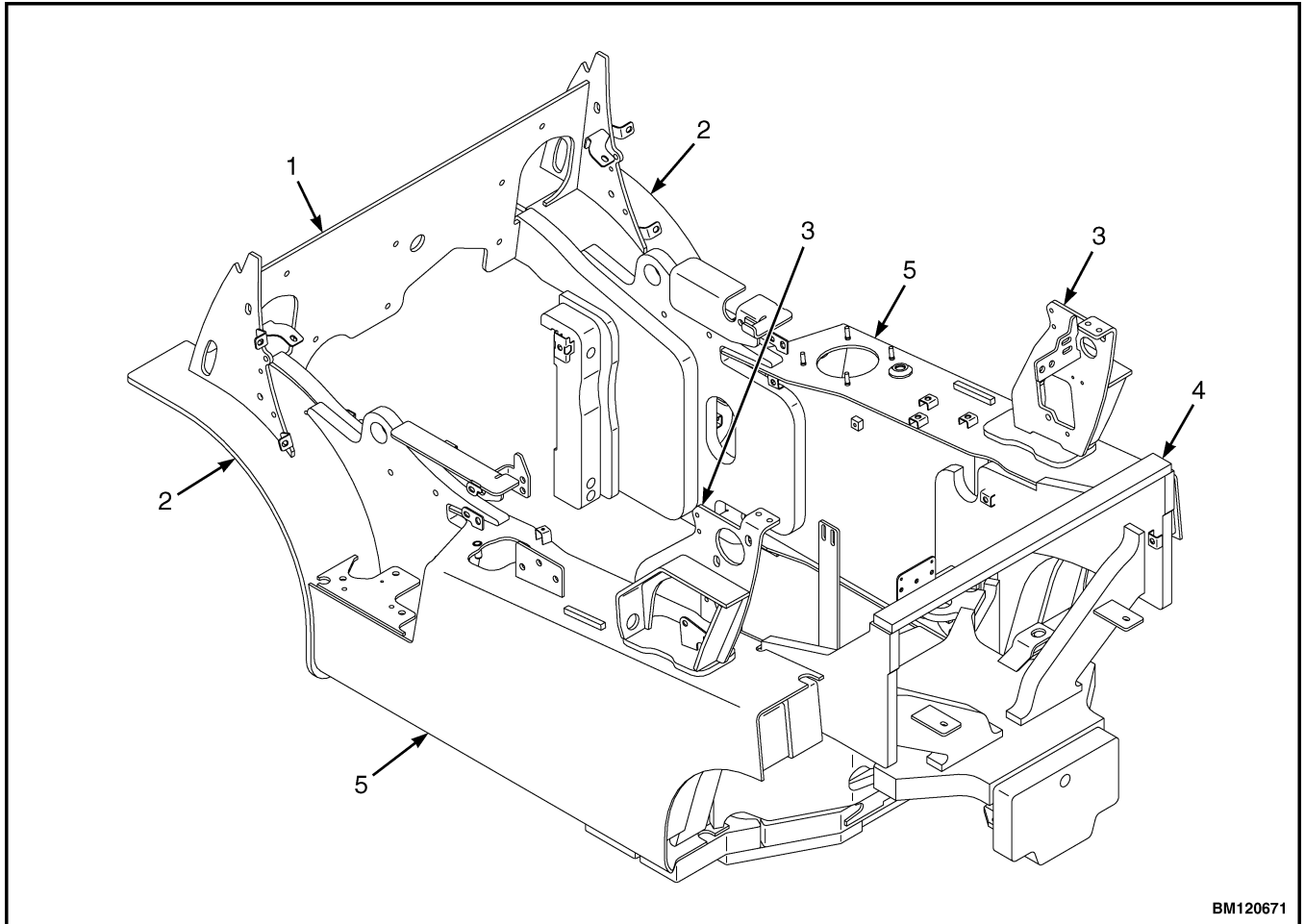


BM120405

1. COWL PLATE
2. FENDERS
3. HOOD MOUNTS

4. COUNTERWEIGHT MOUNTS
5. HYDRAULIC TANK
6. FUEL TANK (GAS OR DIESEL)

Figure 1. Frame for Lift Trucks with Single Hydraulic Tank



- 1. COWL PLATE
- 2. FENDERS
- 3. HOOD MOUNTS

- 4. COUNTERWEIGHT MOUNTS
- 5. HYDRAULIC TANKS

Figure 2. Frame for Lift Trucks with Dual Hydraulic Tanks

Hood, Seat, and Side Covers Replacement

REMOVE

1. Slide seat to the closest position to steering column.
2. Fully tilt steering column forward.
3. If your truck is equipped with an LPG tank, swing tank off to the side.
4. Raise latch on the left, front corner of hood to unlatch and lift up hood. See Figure 3.
5. Remove floor mat and floor plate. See Figure 4.
6. Remove two capscrews holding left and right rear side covers to the frame. Remove rear side covers from frame. See Figure 4.
7. Remove two capscrews holding left and right fender covers to front overhead guard leg. Remove covers. See Figure 4.
8. Remove four capscrews holding left and right front side covers to frame. Remove covers.
9. Fully lower the steering column.
10. Remove upper steering column cover by pulling up on upper steering column cover to release latches (one on either side), and pulling cover away from steering column. See Figure 5.
11. Remove five fasteners (see Figure 5) securing dash to the top of cowl. Remove four clips, located underneath dash, that attach dash to the kick panel. Lift to remove dash.
12. Lift kick panel to remove it from truck. See Figure 4.
13. Remove three capscrews holding the seal plate. Remove seal plate. See Figure 6.
14. Disconnect seat wire harness connector. See Figure 3.



CAUTION

When removing the seat from the hood, DO NOT use an impact wrench to remove the capscrews. Damage can be caused to the threads on the screws and in the holes.

15. If seat is to be removed, and truck is equipped with a non-swivel seat, remove seat wire harness from seat wire harness brackets that are attached to the underside of hood. Remove the cable clips from the seat wire harness. If truck is equipped with a swivel seat, remove seat wire harness from seat wire harness bracket attached to underside of hood and behind the seat. See Figure 3.
16. Remove four capscrews and washers holding seat to the hood. Lift seat off the hood. Pull seat wire harness through hood. See Figure 3.
17. Remove capscrews and washers at top of the gas springs. Remove gas springs from hood.
18. Remove hinge screws, located in the rear of the hood.
19. Lift hood from the truck. See Figure 3.

INSTALL

1. Place hood onto the lift truck frame.
2. Install hinge screws, located in the rear of the hood, and tighten to 38 N•m (28 lbf ft). See Figure 3.
3. Align top holes in the gas springs with holes in hood. There are two sets of holes used to install the gas springs to hood, based on the type of seat installed on lift truck. One set is for installing the cylinder end of the gas springs and the other set is for attaching the rod end of the gas springs. Install capscrews and washers to attach gas springs to the hood. Refer to Figure 7 and Table 1 for correct holes used to connect the rod end of the cylinder, depending on the type of seat installed on the lift truck. Tighten capscrews to 19.2 N•m (170 lbf in).

**Thank you very much
for your reading.**

**Please click here to buy
After you pay.**

**Then, you can
download the complete
manual instantly.
No waiting.**