

DX420LC

Shop Manual

K1009096E

Serial Number 5001 and Up

Daewoo reserves the right to improve our products in a continuing process to provide the best possible product to the market place. These improvements can be implemented at any time with no obligation to change materials on previously sold products. It is recommended that consumers periodically contact their distributors for recent documentation on purchased equipment.

This documentation may include attachments and optional equipment that is not available in your machine's package. Please call your distributor for additional items that you may require.

Illustrations used throughout this manual are used only as a representation of the actual piece of equipment, and may vary from the actual item.

Table of Contents

Safety

Track Excavator Safety.....	SP000256
-----------------------------	----------

Specifications

Specification for DX420LC.....	SP000257
--------------------------------	----------

General Maintenance

General Maintenance Procedures.....	SP000016
Standard Torques.....	SP000017

Upper Structure

Cabin	SP000018
Counterweight.....	SP000265
Fuel Tank.....	SP000264
Swing Bearing.....	SP000262
Swing Reduction Gear.....	SP000249

Lower Structure and Chassis

Track Assembly	SP000263
Air Conditioner.....	SP000025

Engine and Drive Train

Drive Coupling (Main Pump).....	SP000026
---------------------------------	----------

Hydraulics

Hydraulic System Troubleshooting, Testing and Adjustment	SP000273
Accumulator.....	SP000028
Center Joint (Swivel).....	SP000181
Cylinders.....	SP000030

Swing Motor.....	SP000261
Travel Motor (With Gearbox)	SP000266
Main Pump.....	SP000186
Control Valve (KVMG-400-DA).....	SP000187
Remote Control Valve (Work Lever / Joystick)	SP000189
Travel Control Valve (With Damper).....	SP000070
Solenoid Valve Assembly	SP000191
Breaker EPPR Valve (Opt)	SP000192
Fan Motor (Vane Type).....	SP000209
Gear Pump (Fan Cooling Drive)	SP000208
Fan Cooling Flow In-Out Change Valve	SP000207
Hydraulic Schematic (DX420LC)	SP000274

Electrical System

Electrical System	SP000269
Electrical Schematic (DX420LC)	SP000275

Attachments

Boom and Arm.....	SP000040
Bucket.....	SP000041

REMOVAL

CAUTION!

Avoid disassembling cabin if there are strong wind gusts, which could catch large surface area of cabin shell and push it sideways during lift.

1. Park on firm and level ground.
 2. Lower front attachment (bucket) to ground.
 3. Shut down engine.
 4. Set safety lever on "RELEASED" position.
 5. Turn starter switch to "I" (ON) position.
-

WARNING!

If engine must be run while performing maintenance, use extreme care. Always have one person in the cabin at all times. Never leave the cabin with the engine running.

6. Fully stroke work levers (joysticks) in all directions to relieve pressure from accumulators.
7. Set safety lever on "LOCK" position.
8. Turn key to "O" (OFF) position and remove from starter switch.
9. Hang maintenance warning tag on controls.
10. Disconnect the battery cable from the negative (-) battery terminal.
11. Prepare cabin shell for removal by disconnecting wiring connectors for:
 - A. Cabin interior lighting.
 - B. External light wiring.
 - C. Radio antenna and connections.
 - D. Wiper/washer connections.

NOTE: Control console wiring harnesses and hydraulic piping lines that pass through the floor of the cabin do not need to be disassembled.

NOTE: If unit is equipped with a cabin protective structure (for forestry, or hazardous working conditions), it must be removed.

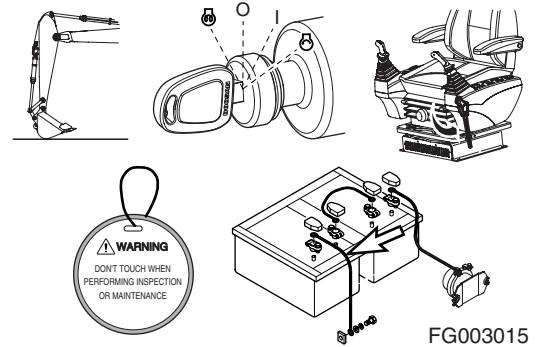
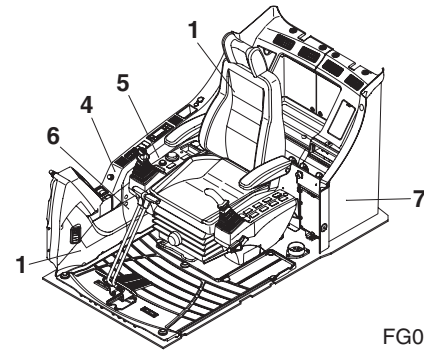


Figure 1

12. Remove floor mat.
13. Remove operator's seat (1, Figure 2).

NOTE: *Be careful not to damage seat covering.*

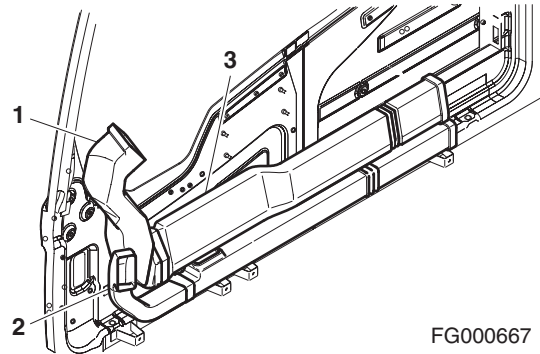
14. Remove duct covers (2, 3 and 4, Figure 2). When removing cover (2) disconnect hour meter connector and cigar lighter connector. Disconnect main harness connector before removing cover (4).
15. Remove pocket (5, Figure 2) before removing side panel (6, Figure 2).



FG000540

Figure 2

16. Remove air duct (1, 2 and 3, Figure 3) at right side of cabin. Disconnect duct wiring connector before removing duct (2).
17. Disconnect washer hose at floor plate bottom.



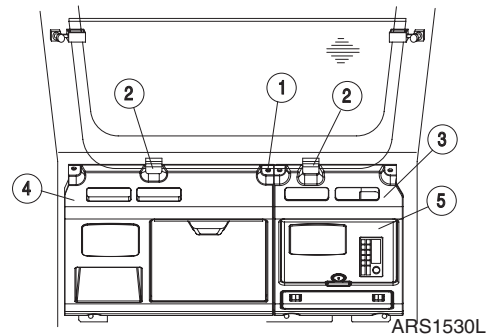
FG000667

Figure 3

18. Remove cover (5, Figure 4) on left side dash cover (3) and bolts (1, Figure 5).

NOTE: *When removing cover, disconnect speaker wire.*

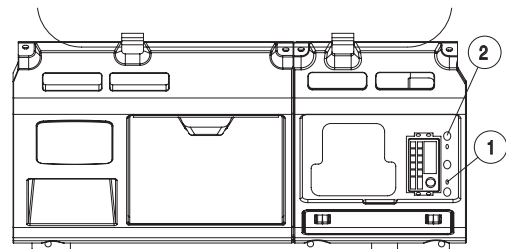
19. Remove two rubber stops (2, Figure 4) used in storing the front lower glass. Remove bolts (1) from the rear left and right dash covers. Remove left side cover (3).
20. Lift right side dash cover (4, Figure 4) and disconnect speaker wire. Remove cover.



ARS1530L

Figure 4

21. Remove three bolts (2, Figure 5) after disconnecting the speaker and antenna wires. Remove stereo assembly.
22. Disconnect cabin light wiring connector.
23. Disconnect cabin ground cable (7, Figure 2).

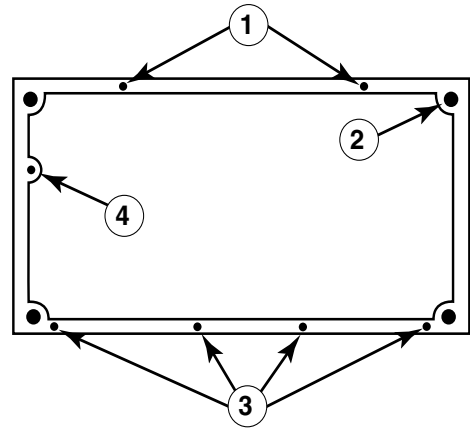


ARS1540L

Figure 5

24. Remove four mounting nuts from four corners of cabin floor (2, Figure 6).
25. Remove four hex bolts (3, Figure 6) from door side of cabin floor.
26. Remove two hex bolts (1, Figure 6) from right side of cabin floor and one bolt (4) from front of cabin floor.

Quantity	Description
4	16 mm hex nuts at each corner of the cabin.
4	10 mm x 1.5 hex bolts at the door side of the cabin.
3	10 mm x 1.5 mm hex head bolts, 2 on the right side of the cabin and 1 under the front window.



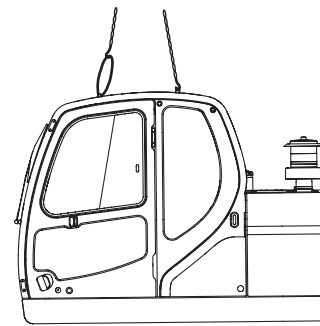
HAOF270L

Figure 6

27. Using a suitable lifting device, attach slings to four lift points on top of cabin (Figure 7).

NOTE: Cabin weighs approximately 290 kg (639 lb).

28. Lift cabin approximately 25 - 50 mm (1" - 2") above deck. Check that all electrical connections have been disconnected and all other items unbolted.
29. Continue lifting with the assist crane to remove the cabin shell. Lower the shell to a prepared safe blocking support.



FG000541

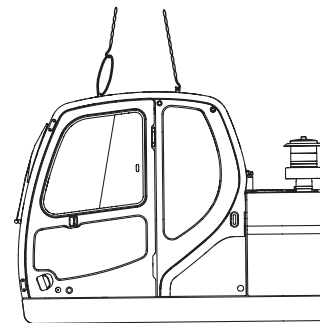
Figure 7

INSTALLATION

1. Using a suitable lifting device, attach slings to four lift points on top of cabin (Figure 7).

NOTE: Cabin weighs approximately 290 kg (639 lb).

2. Lower cabin into position on cabin floor.



FG000541

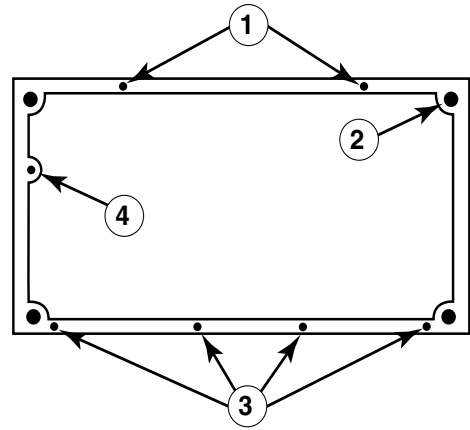
Figure 8

- Install four mounting nuts on four corners of cabin floor (2, Figure 9).

NOTE: *Mounting nut torque 20.2 kg•m (146 ft lb)*

- Install four hex bolts (3, Figure 9) in door side of cabin floor.
- Install two hex bolts (1, Figure 9) in right side of cabin floor and one bolt (4) in front of cabin floor.

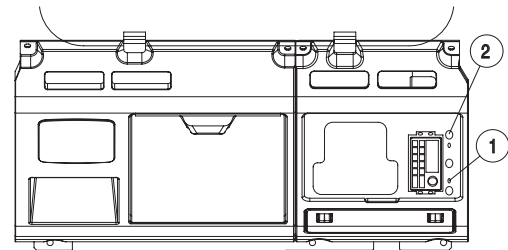
Quantity	Description
4	16 mm hex nuts at each corner of the cabin.
4	10 mm x 1.5 hex bolts at the door side of the cabin.
3	10 mm x 1.5 mm hex head bolts, 2 on the right side of the cabin and 1 under the front window.



HAOF270L

Figure 9

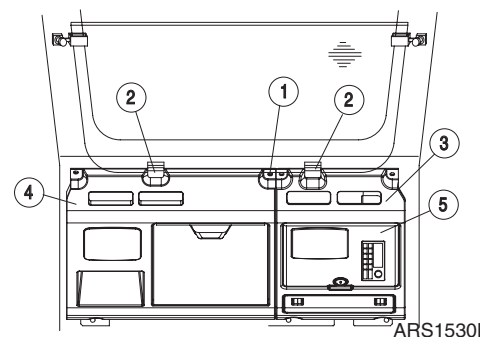
- Once cabin is mounted to floor, unhook lifting device.
- Connect cabin ground cable (7, Figure 2).
- Connect cabin light wiring connector.
- Install stereo assembly with bolts (2, Figure 10) after connecting speaker and antenna wires.



ARS1540L

Figure 10

- Install right side dash cover (4, Figure 11) with bolts (1, Figure 10).
- Install left side dash cover (3, Figure 11) with bolts (1, Figure 10). Install two rubber stops (2, Figure 11).
- Install cover (5, Figure 11) on left side dash cover (3).
- NOTE:** *Connect speaker wire before installing cover.*
- Connect washer hose at floor plate bottom.



ARS1530L

Figure 11

**Thank you very much
for your reading.**

**Please click here to buy
After you pay.**

**Then, you can
download the complete
manual instantly.
No waiting.**