
TC35A, TC35DA, TC40A, TC40DA, TC45A, TC45DA REPAIR MANUAL COMPLETE CONTENTS

SECTION 00 - GENERAL INFORMATION	2
SECTION 10 - ENGINE	3
SECTION 18 - CLUTCH	10
SECTION 21 - TRANSMISSION	12
SECTION 23 - DRIVELINE	14
SECTION 25 - FWD FRONT AXLE	15
SECTION 27 - DIFFERENTIAL, REAR AXLE	18
SECTION 29 - HYDROSTATIC TRANSMISSION	19
SECTION 31 - POWER TAKE-OFF (PTO) SYSTEMS	22
SECTION 33 - BRAKES	25
SECTION 35 - HYDRAULIC SYSTEM	25
SECTION 41 - STEERING	29
SECTION 44 - 2WD FRONT AXLE	31
SECTION 50 - CLIMATE CONTROL	31
SECTION 55 - ELECTRICAL	35
SECTION 90 - PLATFORM	53

The following pages are the collation of the contents pages from each section and chapter of the TC35A - TC45DA Repair manual. Complete Repair part # 87618714.

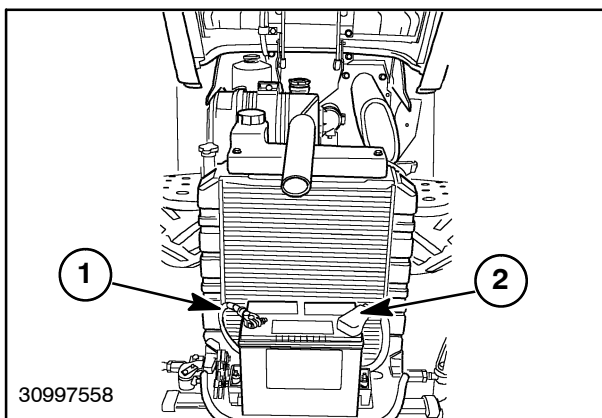
The sections used through out all New Holland product Repair manuals may not be used for each product. Each Repair manual will be made up of one or several books. Each book will be labeled as to which sections are in the overall Repair manual and which sections are in each book.

The sections listed above are the sections utilized for the TC35A - TC45DA Tractors.

SEPARATING THE TRACTOR AT THE CLUTCH HOUSING/ENGINE - 12X12 TRANSMISSION

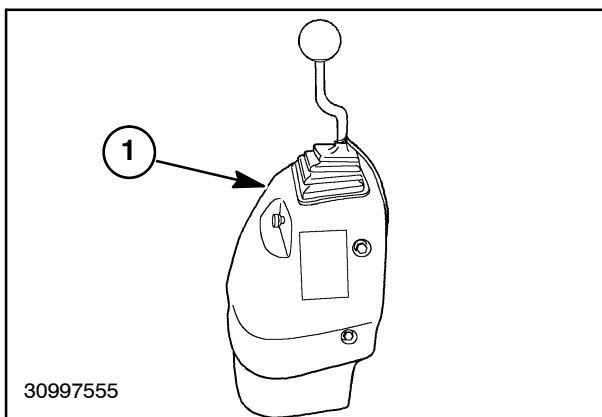
Removal

1. Remove the negative (-) battery cable, 1, and the positive (+) battery cable, 2, from the battery.
2. Drain all of the hydraulic fluid from the transmission and the differential into a suitable container.
3. Disconnect the headlight wire harness plug and remove the hood from the tractor.
4. Remove the seat, and the seat base assembly from the tractor.
5. Remove the light bars from the fenders and the ROPS.
6. If equipped, remove the remote loader control valve, 1, and the connecting hydraulic tubes from the right fender.
7. Remove the left and right fenders from the tractor.

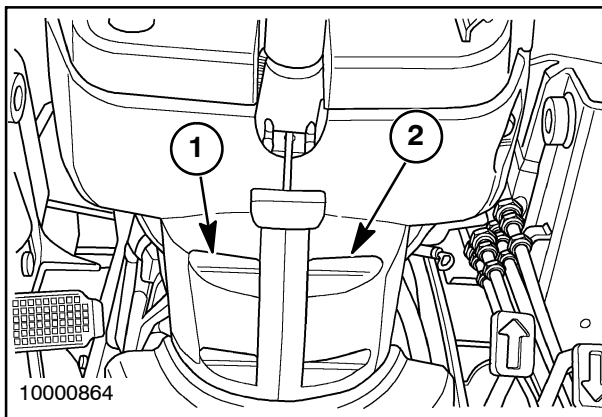


6

8. Remove the left, 1, and right, 2, rear hood side panels.
9. Disconnect and remove the throttle cable from the foot throttle control pedal, located on the right deck.
10. Remove the left and the right deck from the tractor.
11. Disconnect the throttle cable from the dash mounted throttle control lever.



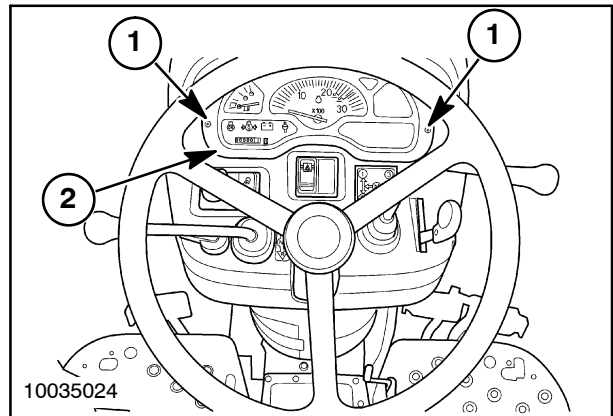
7



8

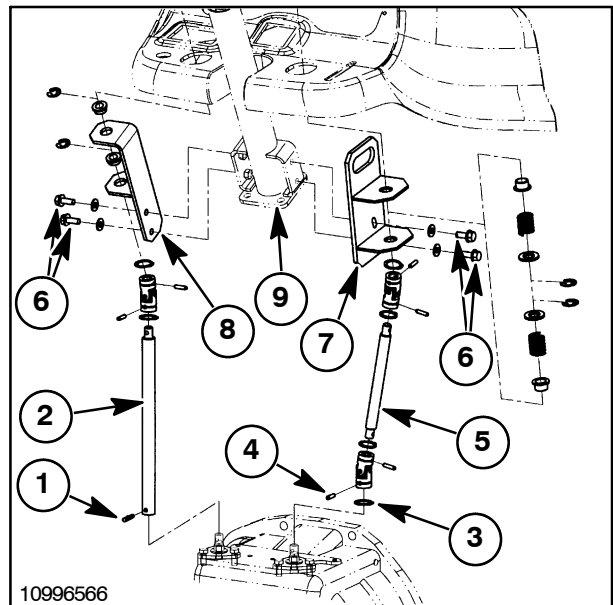
SECTION 10 - ENGINE - CHAPTER 1

12. Loosen and remove the two instrument panel retaining screws, 1. Remove the instrument panel, 2, from the dash housing. Disconnect the wiring connector from the instrument panel.



9

13. Drive the roll pin, 1, from the lower shuttle shift shaft, 2. Remove the retaining ring, 3, and the roll pin, 4, from the lower main shift shaft, 5. Loosen and remove the retaining bolts, 6, securing the main shift bracket, 7, and the shuttle shift bracket, 8, to the steering column, 9. Remove the shift shaft assemblies by feeding the control levers down through the dash housing.

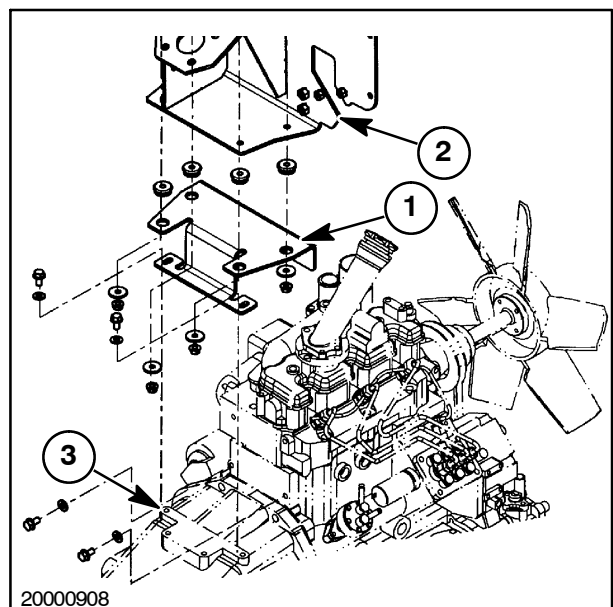


10

14. Remove the dash housing from the firewall. Disconnect the wiring connectors from the dash switches.

15. Disconnect the main wiring harness connector.

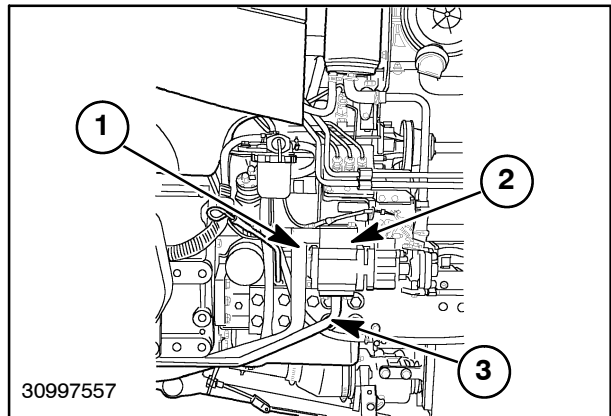
16. Remove the firewall support bracket, 1, from the firewall, 2, and the clutch housing, 3.



11

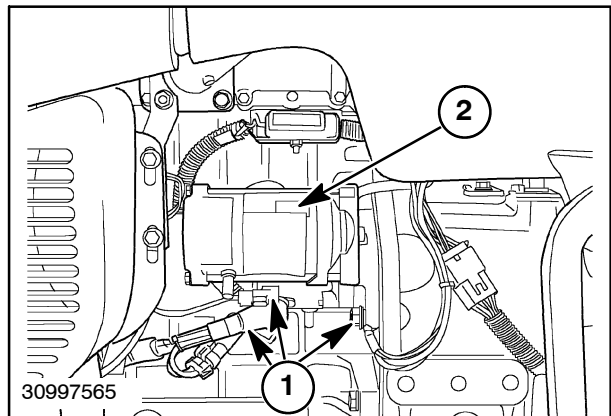
SECTION 10 - ENGINE - CHAPTER 1

17. Remove the hydraulic system inlet tube, 1, from the hydraulic pump, 2.
18. Remove the hydraulic system pressure tube, 3, from the hydraulic pump, 2, and the diverter valve.



12

19. Disconnect the wires, 1, on the starter, 2, and remove the starter from the tractor.

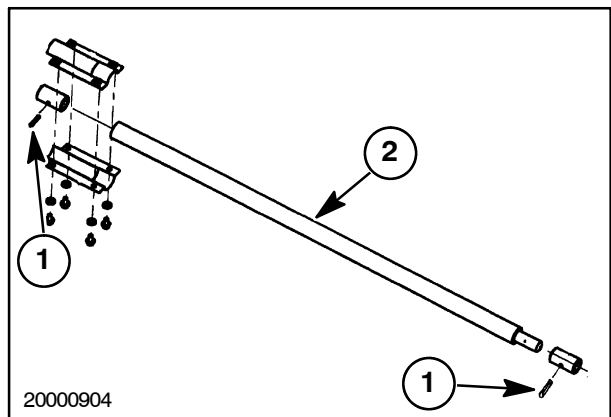


13

20. If equipped with FWD, remove the roll pins, 1, from the front and rear of the FWD driveshaft, 2, and remove the driveshaft from the tractor.

NOTE: Draining the engine oil and removal of the oil filter is necessary on the TC35A tractor to gain access to several of the buckle-up bolts.

21. Drain the engine oil into a suitable container and remove the oil filter.

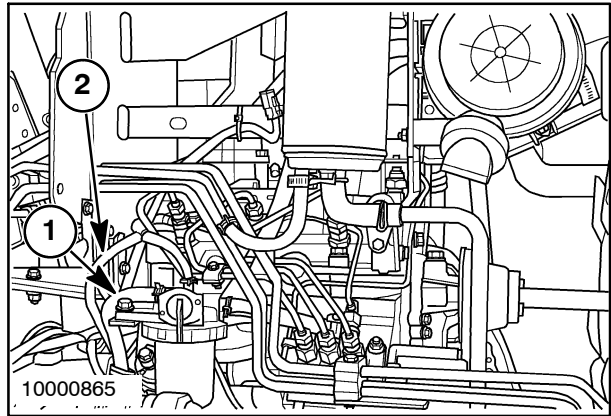


14

SECTION 10 - ENGINE - CHAPTER 1

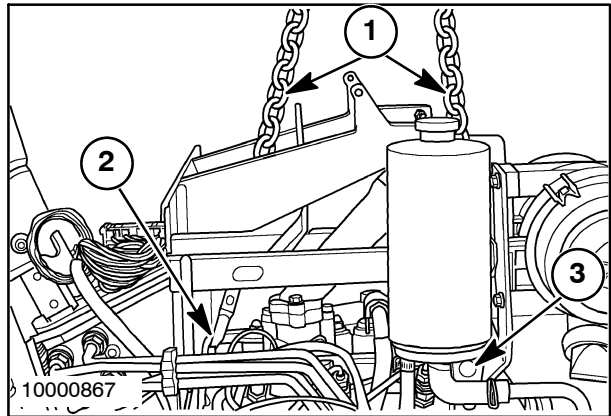
22. Remove the fuel supply, 1, and return, 2, lines from the fuel filter, 3.

23. Drain the fuel tank into a suitable container.



15

24. Attach a chain sling, 1, to the two hoist eyes, 2 and 3, on the engine.

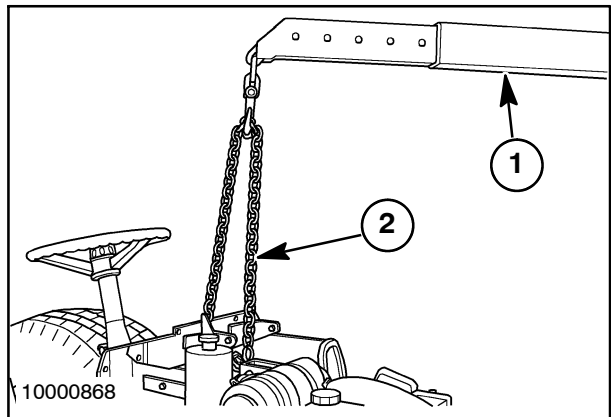


16

25. Attach a suitable hoist, 1, to the chain sling, 2.

NOTE: The hoist is used for supporting the engine and axle assembly, not for lifting.

26. Roll a floor jack under the tractor from the rear of the tractor, and place under the clutch housing. Raise the jack enough to support the drive train.

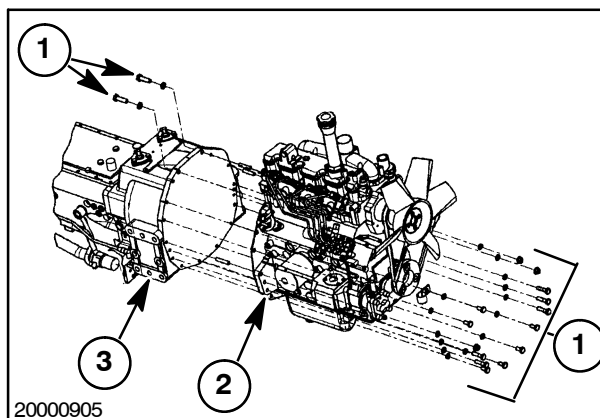


17

- Remove the buckle-up bolts, 1, that secure the engine, 2, to the clutch housing, 3.

NOTE: The hoist and/or the floor jack may need to be raised or lowered to allow the separation of the engine from the clutch housing.

- Carefully roll the drive train away from the engine, using the floor jack for support.

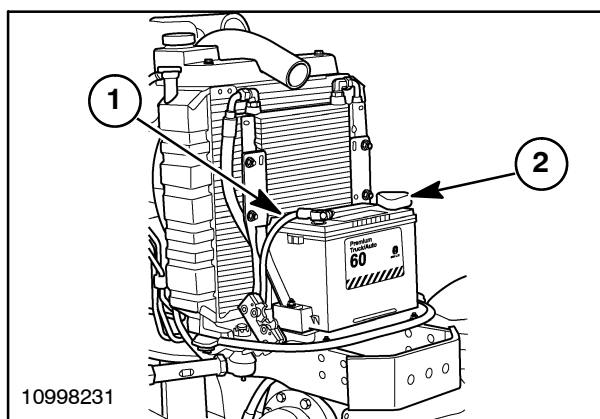


18

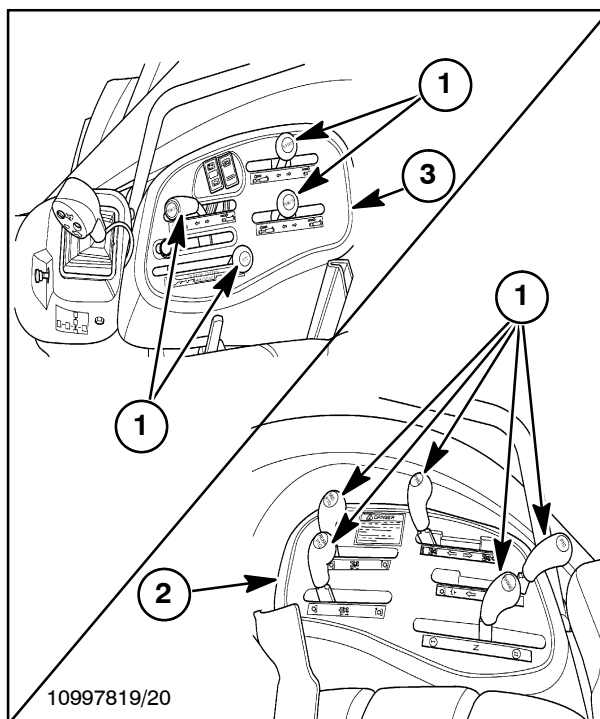
SEPARATING THE TRACTOR AT THE HST HOUSING/ENGINE-HST TRANSMISSION

Removal

- Remove the negative (-) battery cable, 1, and the positive (+) battery cable, 2, from the battery.
- Drain all of the hydraulic fluid from the transmission, differential, and the oil cooler into a suitable container.
- Disconnect the headlight wire harness plug and remove the hood from the tractor.
- Remove the seat, and the seat track assembly from the tractor deck.
- Remove the control lever grips, 1, from the control levers on both sides of the tractor.
- Remove the left, 2, and the right, 3, control pods from the fenders.
- Remove the light bars from the fenders and the ROPS.
- Disconnect and remove the control levers from the tractor deck and the connecting linkage.



19



20

**Thank you very much
for your reading.**

**Please click here to buy
After you pay.**

**Then, you can
download the complete
manual instantly.
No waiting.**