

Product: BACKHOE LOADER

Model: 434F2 BACKHOE LOADER HWR

Configuration: 434F2 Side Shift Backhoe Loader HWR00001-UP (MACHINE) POWERED BY C4.4 Engine

Disassembly and Assembly

422F2, 427F2, 428F2, 432F2, 434F2 and 444F2 Backhoe Loaders Powertrain

Media Number -UENR3743-01

Publication Date -01/06/2015

Date Updated -05/06/2018

i06187558

Axle Housing and Flange - Remove

SMCS - 4057-011; 4234-011

Removal Procedure

Table 1

Required Tools			
Tool	Part Number	Part Description	Qty
A	1P-2320	Combination Puller	1
B	230-7923	Spanner Wrench As	1
C	2P-8312	Retaining Ring Pliers	1

Start By:

- a. Remove the drive and steering axle.
 - b. Remove the final drive planetary.
-

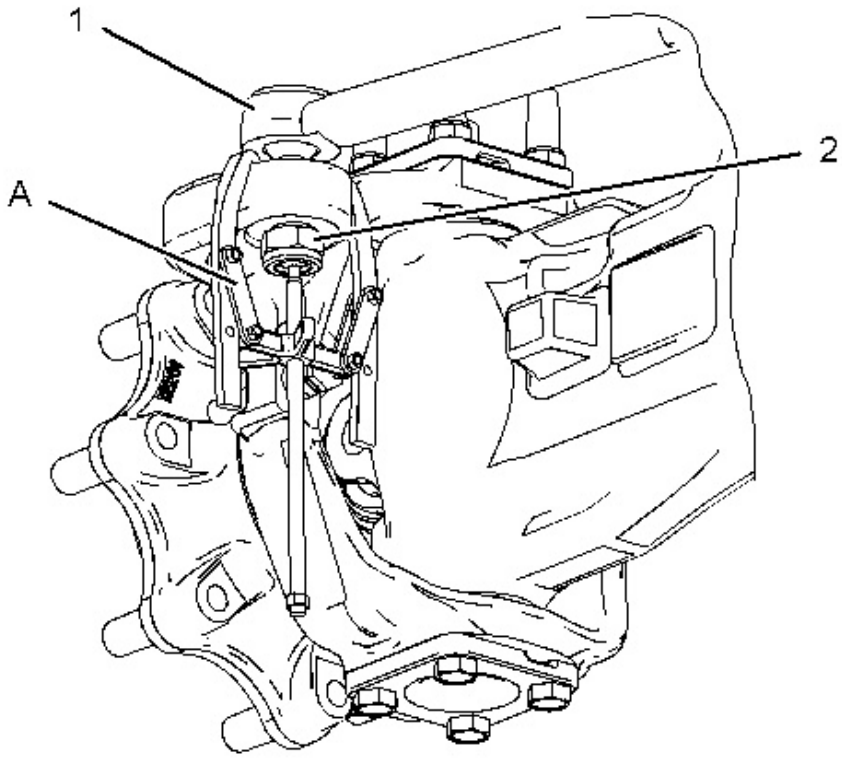
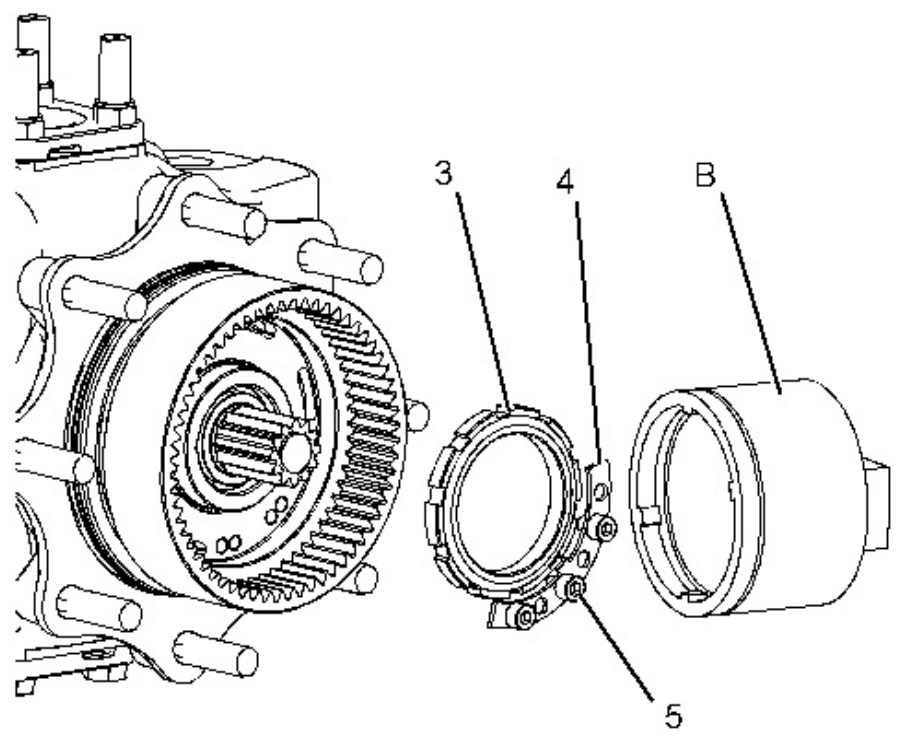


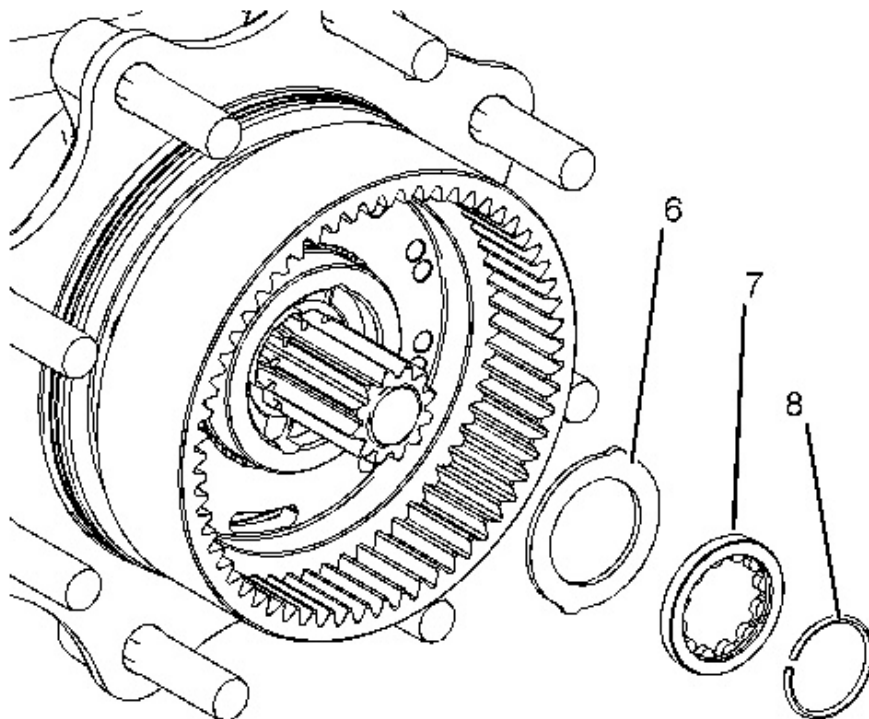
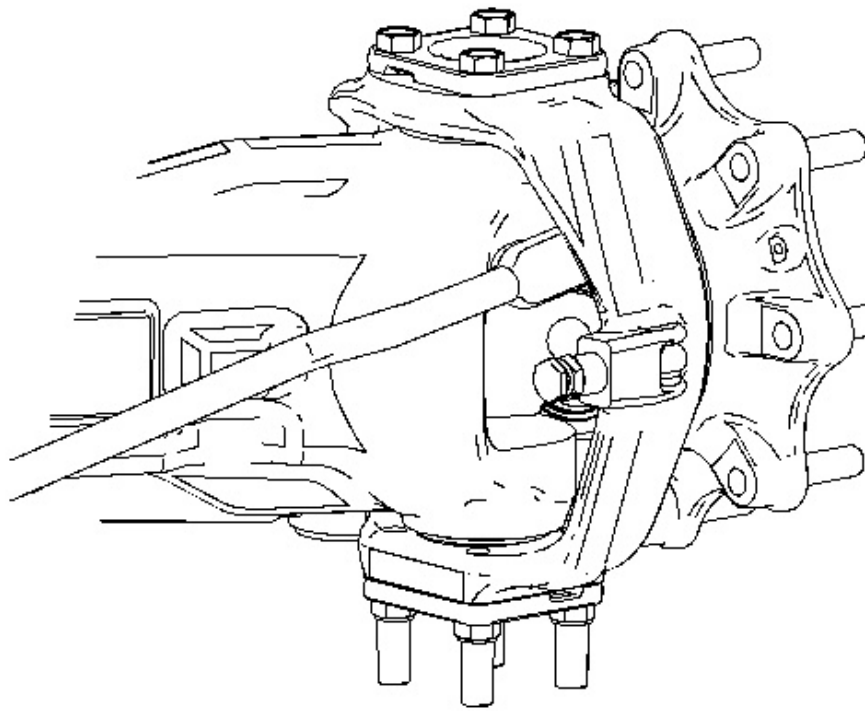
Illustration 1

g01047618

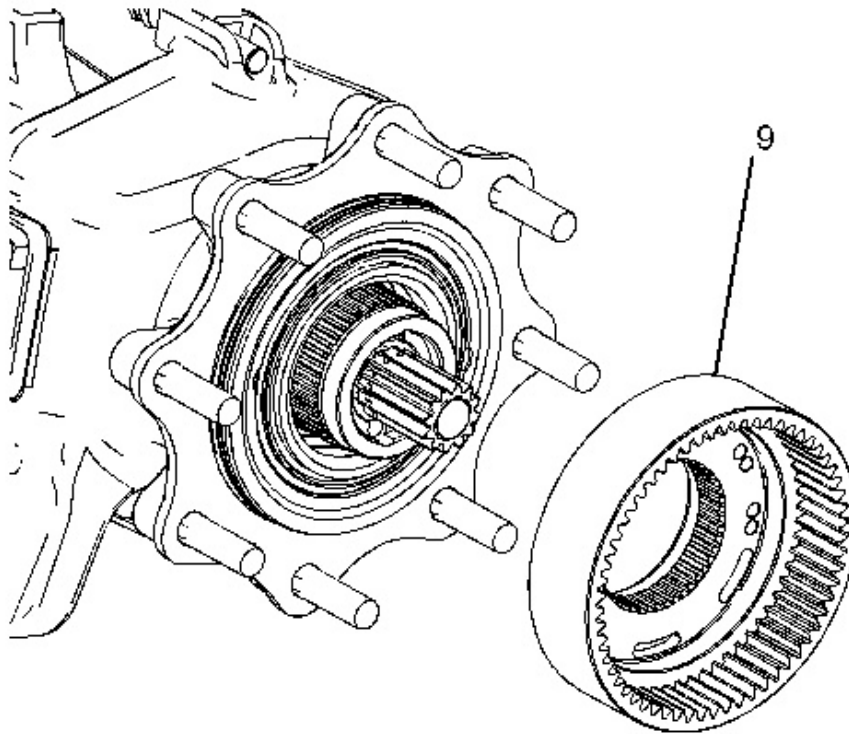
1. Loosen nut (2). Do not remove nut (2) at this time. Install Tooling (A). Remove tie rod end (1) and nut (2) . Position tie rod end (1) out of the way.



2. Remove bolts (5) and remove locking plate (4). Use Tooling (B) in order to remove spanner nut (3).
-



3. Use a suitable pry bar and push the double U-joint toward the wheel flange. This will make the removal of retaining ring (8) easier. Use Tooling (C) and remove retaining ring (8). Remove thrust washer (7) and washer (6).
-



4. Remove ring gear (9).
-

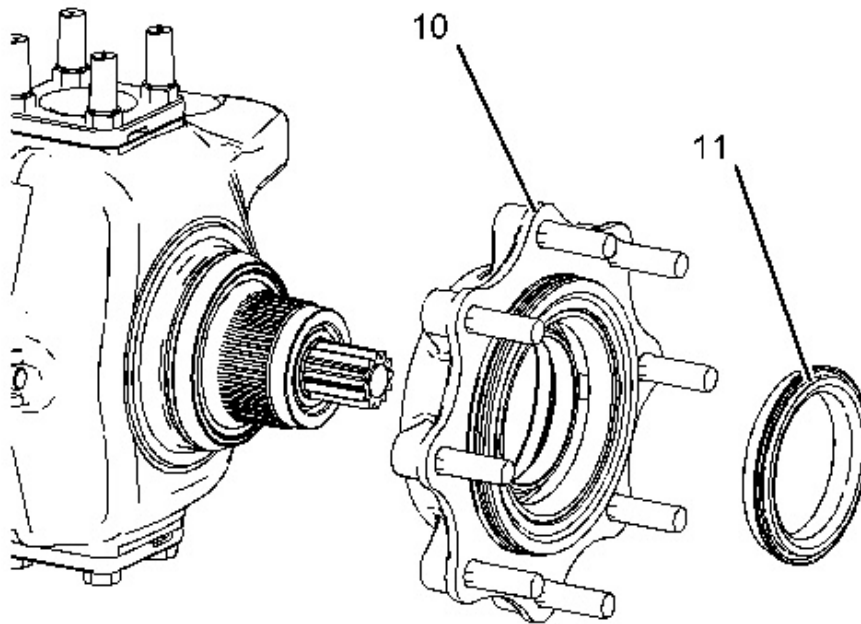


Illustration 6

g01023126

5. Remove wheel flange (10).

Note: Bearing cone (11) will fall out of wheel flange (10) when wheel flange (10) is removed.

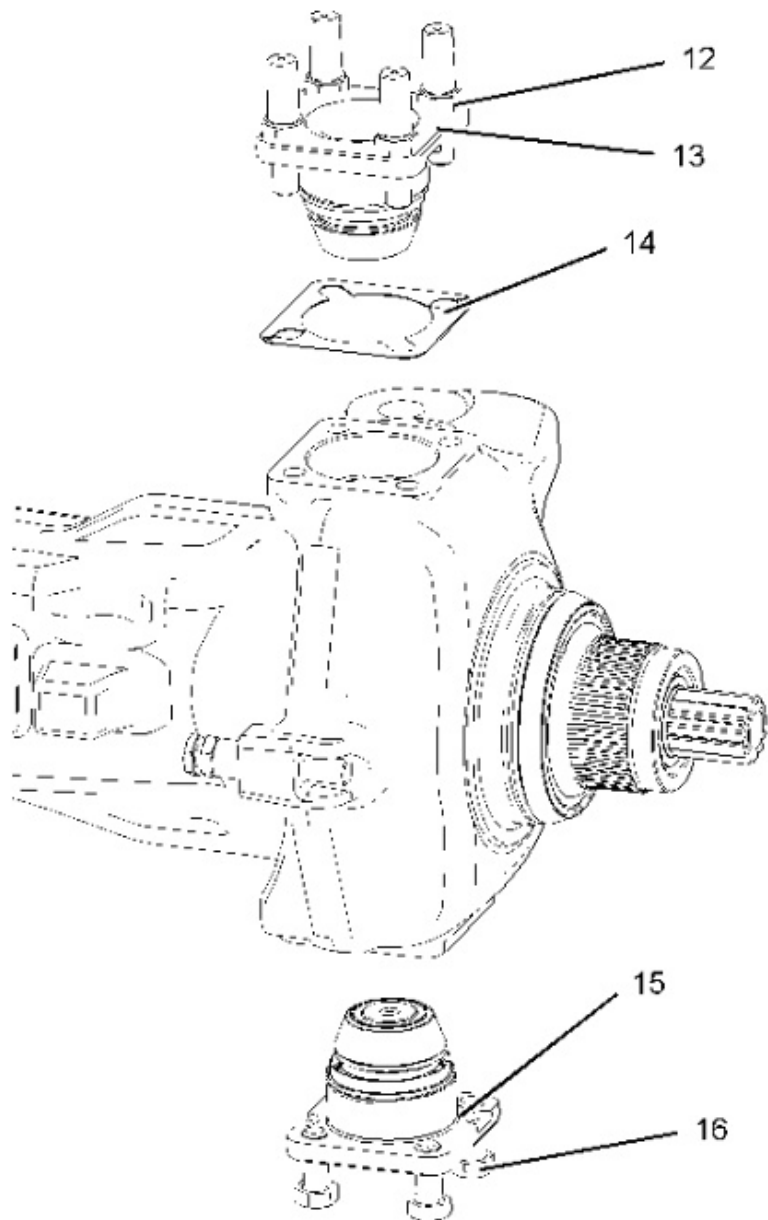


Illustration 7

g01023130

Note: Note the order and orientation of shims (14) for assembly purposes.

6. Remove bolts (12). Remove pin assembly (13) and shims (14). Remove bolts (16) and pin assembly (15).
-

**Thank you very much
for your reading.**

**Please click here to buy
After you pay.**

**Then, you can
download the complete
manual instantly.
No waiting.**