




FOREWORD

This Arctic Cat Service Manual contains service, maintenance, and troubleshooting information for the 2006 Arctic Cat ATV models. The complete manual is designed to aid service personnel in service-oriented applications.

This manual is divided into sections. Each section covers a specific ATV component or system and, in addition to the standard service procedures, includes disassembling, inspecting, and assembling instructions. When using this manual as a guide, the technician should use discretion as to how much disassembly is needed to correct any given condition.

The service technician should become familiar with the operation and construction of each component or system by carefully studying the complete manual. This manual will assist the service technician in becoming more aware of and efficient with servicing procedures. Such efficiency not only helps build consumer confidence but also saves time and labor.

All Arctic Cat ATV publications and decals display the words Warning, Caution, Note, and At This Point to emphasize important information. The symbol  **WARNING** identifies personal safety-related information. Be sure to follow the directive because it deals with the possibility of severe personal injury or even death. The symbol  **CAUTION** identifies unsafe practices which may result in ATV-related damage. Follow the directive because it deals with the possibility of damaging part or parts of the ATV. The symbol  **NOTE:** identifies supplementary information worthy of particular attention. The symbol  **AT THIS POINT** directs the technician to certain and specific procedures to promote efficiency and to improve clarity.

At the time of publication, all information, photographs, and illustrations were technically correct. Some photographs used in this manual are used for clarity purposes only and are not designed to depict actual conditions. Because Arctic Cat Inc. constantly refines and improves its products, no retroactive obligation is incurred.

All materials and specifications are subject to change without notice.

Keep this manual accessible in the shop area for reference.

Product Service and
Warranty Department
Arctic Cat Inc.

TABLE OF CONTENTS

Click on the Red text to go.

Foreword

Section

1. General Information

1

2. Periodic Maintenance/Tune-Up

2

3. Engine/Transmission

3

4. Fuel/Lubrication/Cooling

4

5. Electrical System

5

6. Drive System

6

7. Suspension

7

8. Steering/Frame

8

9. Controls/Indicators

9

10. Aids for Maintenance

10

11. Troubleshooting

11



SECTION 1 - GENERAL INFORMATION

TABLE OF CONTENTS

General Specifications (400/400 TBX/400 TRV - Automatic Transmission)	1-2
General Specifications (400 - Manual Transmission)	1-3
General Specifications (500 - Manual Transmission)	1-4
General Specifications (500/500 TBX/500 TRV - Automatic Transmission)	1-5
General Specifications (650 H1)	1-6
General Specifications (650 V-Twin)	1-7
Break-In Procedure	1-8
Gasoline - Oil - Lubricant	1-8
Genuine Parts	1-9
Preparation For Storage	1-9
Preparation After Storage	1-10

General Specifications*

(400/400 TBX/400 TRV - Automatic Transmission)

CARBURETOR

Type	Keihin CVK34
Main Jet	142 - VP 140 - FIS
Slow Jet	38
Pilot Screw Setting (turns)	1 3/8 - VP 1 1/8 - FIS
Jet Needle	NAZG
Idle RPM (engine warm)	1250-1350
Starter Jet	75
Float Arm Height	17 mm (0.7 in.)
Throttle Cable Free-Play (at lever)	3-6 mm (1/8-1/4 in.)

ELECTRICAL

Ignition Timing	10° BTDC @ 1500 RPM
Spark Plug Type	NGK CR7E
Spark Plug Gap	0.7-0.8 mm (0.028-0.032 in.)
Spark Plug Cap	8000-12,000 ohms
Ignition Coil Resistance (primary)	Less than 1 ohm (terminal to ground)
(secondary)	5200-7800 ohms (high tension - plug cap removed - to ground)
Ignition Coil Peak Voltage (primary/CDI)	250-375 volts (terminal to ground)
Magneto Coil Resistance (trigger)	160-240 ohms (green to blue)
(source)	Less than 1 ohm (yellow to white)
(charging)	Less than 1 ohm (black to black)
Magneto Coil Peak Voltage (trigger)	5.04-7.56 volts (green to blue)
(source)	0.7-1.05 volts (yellow to white)
Stator Coil Output (no load)	60 AC volts @ 5000 RPM (black to black #1) (black to black #2)
Magneto Output (approx)	220W @ 5000 RPM

CHASSIS

Brake Type	Hydraulic w/Brake Lever Lock and Auxiliary Brake
Tire Size	Front - 25 x 8-12 Rear - 25 x 10-12 - VP Rear - 25 x 10-12 - FIS
Tire Inflation Pressure	0.35 kg/cm ² (5 psi)

MISCELLANY

Gas Tank Capacity (rated)	17.98 L (4.75 U.S. gal.) - VP 24.6 L (6.5 U.S. gal.) - FIS 20.8 L (5.5 U.S. gal.) - TBX/TRV
Reserve Capacity	2.46 L (0.65 U.S. gal.) - VP
Rear Drive Capacity	275 ml (9.3 fl oz) - VP*** 250 ml (8.5 fl oz) - FIS**
Differential Capacity (front - 4x4)	275 ml (9.3 fl oz) - VP**/ FIS***
Engine Oil Capacity	3.08 L (3.25 U.S. qt)
Gasoline (recommended)	87 Octane Regular Unleaded
Engine Oil (recommended)	SAE 10W-40
Differential/Rear Drive Lubricant	SAE Approved 80W-90 Hypoid
Drive Belt Width	28.5 mm (1.12 in.)
Brake Fluid	DOT 4
Taillight/Brakelight	12V/8W/27W
Headlight	12V/37W (2) - 400/400 TRV 12V/27W (2) - 400 TBX

* Specifications subject to change without notice.

** One inch below filler plug threads.

*** At the oil level plug threads.

General Specifications*

(400 - Manual Transmission)

CARBURETOR

Type	Keihin CVK34
Main Jet	142 - VP 140 - FIS
Slow Jet	38
Pilot Screw Setting (turns)	1 3/8 - VP 1 1/8 - FIS
Jet Needle	NAZG
Idle RPM (engine warm)	1250-1350
Starter Jet	75
Float Arm Height	17 mm (0.7 in.)
Throttle Cable Free-Play (at lever)	3-6 mm (1/8-1/4 in.)

ELECTRICAL

Ignition Timing	10° BTDC @ 1500 RPM
Spark Plug Type	NGK CR7E
Spark Plug Gap	0.7-0.8 mm (0.028-0.032 in.)
Spark Plug Cap	8000-12,000 ohms
Ignition Coil Resistance (primary)	Less than 1 ohm (terminal to ground)
(secondary)	5200-7800 ohms (high tension - plug cap removed - to ground)
Ignition Coil Peak Voltage (primary/ CDI)	250-375 volts (terminal to ground)
Magneto Coil Resistance (trigger)	160-240 ohms (green to blue)
(source)	Less than 1 ohm (yellow to white)
(charging)	Less than 1 ohm (black to black)
Magneto Coil Peak Voltage (trigger)	5.04-7.56 volts (green to blue)
(source)	0.7-1.05 volts (yellow to white)
Stator Coil Output (no load)	60 AC volts @ 5000 RPM (black to black #1) (black to black #2)
Magneto Output (approx)	220 W @ 5000 RPM

CHASSIS

Brake Type	Hydraulic w/Brake Lever Lock and Auxiliary Brake
Tire Size	Front - 25 x 8-12 Rear - 25 x 10-12 - VP Rear - 25 x 10-12 - FIS
Tire Inflation Pressure	0.35 kg/cm ² (5 psi)

MISCELLANY

Gas Tank Capacity (rated)	17.98 L (4.75 U.S. gal.) - VP 24.6 L (6.5 U.S. gal.) - FIS
Reserve Capacity	2.46 L (0.65 U.S. gal.) - VP
Rear Drive Capacity	275 ml (9.3 fl oz) - VP*** 250 ml (8.5 fl oz) - FIS**
Differential Capacity (front - 4x4)	275 ml (9.3 fl oz) - VP**/ FIS***
Engine Oil Capacity	3.08 L (3.25 U.S. qt)
Gasoline (recommended)	87 Octane Regular Unleaded
Engine Oil (recommended)	SAE 10W-40
Differential/Rear Drive Lubricant	SAE Approved 80W-90 Hypoid
Brake Fluid	DOT 4
Taillight/Brakelight	12V/8W/27W
Headlight	12V/37W (2)

* Specifications subject to change without notice.

** One inch below filler plug threads.

*** At the oil level plug threads.

1

General Specifications*

(500 - Manual Transmission)

CARBURETOR

Type	Keihin CVK36
Main Jet	138
Slow Jet	40
Pilot Screw Setting (turns)	1 3/4
Jet Needle	NFKG
Idle RPM (engine warm)	1250-1350
Starter Jet	85
Float Arm Height	17 mm (0.7 in.)
Throttle Cable Free-Play (at lever)	3-6 mm (1/8-1/4 in.)

ELECTRICAL

Ignition Timing	10° BTDC @ 1500 RPM
Spark Plug Type	NGK CR6E
Spark Plug Gap	0.7-0.8 mm (0.028-0.032 in.)
Spark Plug Cap	8000-12,000 ohms
Ignition Coil Resistance (primary)	Less than 1 ohm (terminal to ground)
(secondary)	5200-7800 ohms (high tension - plug cap removed - to ground)
Ignition Coil Peak Voltage (primary/CDI)	140-215 volts (terminal to ground)
Magneto Coil Resistance (trigger)	160-240 ohms (green to blue)
(source)	Less than 1 ohm (yellow to white)
(charging)	Less than 1 ohm (black to black)
Magneto Coil Peak Voltage (trigger)	4.2-6.3 volts (green to blue)
(source)	0.40-0.62 volt (yellow to white)
Stator Coil Output (no load)	60 AC volts @ 5000 RPM (black to black #1) (black to black #2)
Magneto Output (approx)	325W @ 5000 RPM

CHASSIS

Brake Type	Hydraulic w/Brake Lever Lock and Auxiliary Brake
Tire Size	Front - 25 x 8-12 Rear - 25 x 11-12
Tire Inflation Pressure	0.35 kg/cm ² (5 psi)

MISCELLANY

Gas Tank Capacity (rated)	24.6 L (6.5 U.S. gal.)
Coolant Capacity	2.9 L (3.0 U.S. qt)
Differential Capacity	275 ml (9.3 fl oz)**
Rear Drive Capacity	250 ml (8.5 fl oz)***
Engine Oil Capacity	3.4 L (3.5 U.S. qt)
Gasoline (recommended)	87 Octane Regular Unleaded
Engine Oil (recommended)	SAE 10W-40
Differential/Rear Drive Lubricant	SAE Approved 80W-90 Hypoid
Brake Fluid	DOT 4
Taillight/Brakelight	12V/8W/27W
Headlight	12V/27W (2)

* Specifications subject to change without notice.

** At the oil level plug threads.

*** At the filler plug threads.

General Specifications*

(500/500 TBX/500 TRV - Automatic Transmission)

CARBURETOR

Type	Keihin CVK36
Main Jet	138
Slow Jet	40
Pilot Screw Setting (turns)	1 3/4
Jet Needle	NFKG
Idle RPM (engine warm)	1250-1350
Starter Jet	85
Float Arm Height	17 mm (0.7 in.)
Throttle Cable Free-Play (at lever)	3 -6 mm (1/8-1/4 in.)

ELECTRICAL

Ignition Timing	10° BTDC @ 1500 RPM
Spark Plug Type	NGK CR6E
Spark Plug Gap	0.7-0.8 mm (0.028-0.032 in.)
Spark Plug Cap	8000-12,000 ohms
Ignition Coil Resistance (primary) (secondary)	Less than 1 ohm (terminal to ground) 5200-7800 ohms (high tension - plug cap removed - to ground)
Ignition Coil Peak Voltage (primary/CDI)	140-215 volts (terminal to ground)
Magneto Coil Resistance (trigger) (source) (charging)	160-240 ohms (green to blue) Less than 1 ohm (yellow to white) Less than 1 ohm (black to black)
Magneto Coil Peak Voltage (trigger) (source)	4.2-6.3 volts (green to blue) 0.40-0.62 volt (yellow to white)
Stator Coil Output (no load)	60 AC volts @ 5000 RPM (black to black #1) (black to black #2)
Magneto Output (approx)	325W @ 5000 RPM

CHASSIS

Brake Type	Hydraulic w/Brake Lever Lock and Auxiliary Brake
Tire Size	Front - 25 x 8-12 Rear - 25 x 11-12
Tire Inflation Pressure	0.35 kg/cm ² (5 psi)

MISCELLANY

Gas Tank Capacity (rated)	24.6 L (6.5 U.S. gal.)/ 20.8 L (5.5 U.S. gal.) - TBX
Coolant Capacity	2.9 L (3.0 U.S. qt)
Differential Capacity	275 ml (9.3 fl oz)**
Rear Drive Capacity	250 ml (8.5 fl oz)***
Engine Oil Capacity	2.5 L (2.6 U.S. qt)
Gasoline (recommended)	87 Octane Regular Unleaded
Engine Oil (recommended)	SAE 10W-40
Differential/Rear Drive Lubricant	SAE Approved 80W-90 Hypoid
Drive Belt Width (minimum)	38 mm (1.33 in.)
Brake Fluid	DOT 4
Taillight/Brakelight	12V/8W/27W
Headlight	12V/27W (2)

* Specifications subject to change without notice.

** At the oil level plug threads.

*** At the filler plug threads.

1



Back to TOC

Back to Section TOC



General Specifications*

(650 H1)

CARBURETOR	
Type	Keihin CVK40
Main Jet	138
Slow Jet	40
Pilot Screw Setting (turns)	2
Jet Needle	NFKN
Idle RPM (engine warm)	1250-1350
Starter Jet	85
Float Arm Height	17 mm (0.7 in.)
Throttle Cable Free-Play (at lever)	3-6 mm (1/8-1/4 in.)
ELECTRICAL	
Ignition Timing	10° BTDC @ 1500 RPM
Spark Plug Type	NGK CR6E
Spark Plug Gap	0.7-0.8 mm (0.028-0.032 in.)
Spark Plug Cap	8000-12,000 ohms
Ignition Coil Resistance (primary)	Less than 1 ohm (terminal to ground) 5200-7800 ohms (high tension - plug cap removed - to ground)
(secondary)	
Ignition Coil Peak Voltage (primary/CDI)	142.4-213.6 volts (terminal to ground)
Magneto Coil Resistance (trigger)	160-240 ohms (green to blue)
(source)	Less than 1 ohm (yellow to white)
(charging)	Less than 1 ohm (black to black)
Magneto Coil Peak Voltage (trigger)	4.2-6.3 volts (green to blue)
(source)	0.40-0.62 volt (yellow to white)
Stator Coil Output (no load)	60 AC volts @ 5000 RPM (black to black #1) (black to black #2)
Magneto Output (approx)	325W @ 5000 RPM

CHASSIS	
Brake Type	Hydraulic w/Brake Lever Lock and Auxiliary Brake
Tire Size	Front - 25 x 8-12 Rear - 25 x 11-12
Tire Inflation Pressure	0.35 kg/cm ² (5 psi)
MISCELLANY	
Gas Tank Capacity (rated)	24.6 L (6.5 U.S. gal.)
Coolant Capacity	2.9 L (3.0 U.S. qt)
Differential Capacity	275 ml (9.3 fl oz)**
Rear Drive Capacity	250 ml (8.5 fl oz)***
Engine Oil Capacity	3.4 L (3.5 U.S. qt)
Gasoline (recommended)	87 Octane Regular Unleaded
Engine Oil (recommended)	SAE 10W-40
Differential/Rear Drive Lubricant	SAE Approved 80W-90 Hypoid
Belt Width	35.5 mm (1.40 in.)
Brake Fluid	DOT 4
Taillight/Brakelight	12V/8W/27W
Headlight	12V/27W (2)

* Specifications subject to change without notice.

** At the oil level plug threads.

*** At the filler plug threads.



Back to TOC

Back to Section TOC



General Specifications*

(650 V-Twin)

CARBURETOR	
Type	Keihin CVKR-D32 (2)
Main Jet	122 - Standard 118 - California
Slow Jet	40
Pilot Screw Setting (turns)	2 1/4 (front) 2 1/2 (rear)
Jet Needle	NBZP
Idle RPM (engine warm)	1050-1150
Starter Jet	100
Float Arm Height	4 mm (0.16 in.)
Throttle Cable Free-Play (at lever)	3-6 mm (1/8-1/4 in.)
ELECTRICAL	
Spark Plug Type	NGK CR7E
Spark Plug Gap	0.7-0.8 mm (0.028-0.032 in.)
Spark Plug Cap	4750-6250 ohms
Ignition Coil Resistance	(primary) (secondary) Less than 1 ohm (terminal (+) to terminal (-)) 3800-5800 ohms (high tension - plug cap removed - to ground)
Ignition Coil Peak Voltage	(primary/ CDI) 100 volts or more (wire (+) to ground)
Magneto Coil Resistance	(trigger) (charging) 110-140 ohms (blue to black/white) Less than 1 ohm (black to black)
Magneto Coil Peak Voltage	(trigger) 3.6 volts or more (blue to black/white)
Stator Coil Out- put	(no load) 39-59 AC volts @ 3000 RPM (black to black #1) (black to black #2)

CHASSIS	
Brake Type	Hydraulic w/Brake Lever Lock and Auxiliary Brake
Tire Size	Front - 26 x 8-12 Rear - 26 x 11-12
Tire Inflation Pressure	0.35 kg/cm ² (5 psi)
MISCELLANY	
Gas Tank Capacity (rated)	24.6 L (6.5 U.S. gal.)
Coolant Capacity	2.7 L (2.8 U.S. qt)
Differential Capacity	275 ml (9.3 fl oz)**
Rear Drive Capacity	250 ml (8.5 fl oz)***
Engine Oil Capacity	1.75 L (1.85 U.S. qt)
Gasoline (recommended)	87 Octane Regular Unleaded
Engine Oil (recommended)	SAE 10W-40
Differential/Rear Drive Lubricant	SAE Approved 80W-90 Hypoid
Drive Belt Width (minimum)	30.3 mm (1.19 in.)
Brake Fluid	DOT 4
Taillight/Brakelight	12V/8W/27W
Headlight	12V/27W (2)

* Specifications subject to change without notice.

** One inch below plug threads.

*** At the plug threads.

1



Back to TOC

Back to Section TOC



Break-In Procedure

A new ATV and an overhauled ATV engine require a “break-in” period. The first 10 hours (or 200 miles) are most critical to the life of this ATV. Proper operation during this break-in period will help assure maximum life and performance from the ATV.

During the first 10 hours (or 200 miles) of operation, always use less than 1/2 throttle. Varying the engine RPM during the break-in period allows the components to “load” (aiding the mating process) and then “unload” (allowing components to cool). Although it is essential to place some stress on the engine components during break-in, care should be taken not to overload the engine too often. Do not pull a trailer or carry heavy loads during the 10-hour break-in period.

When the engine starts, allow it to warm up properly. Idle the engine several minutes until the engine has reached normal operating temperature. Do not idle the engine for excessively long periods of time.

During the break-in period, a maximum of 1/2 throttle is recommended; however, brief full-throttle accelerations and variations in driving speeds contribute to good engine break-in.

During the break-in period (or whenever the brake pads are replaced), the hydraulic brake pads must be burnished. Slow disc-speed hydraulic brakes must be properly burnished in order to achieve maximum stopping power.

 **CAUTION**

BRAKE PADS MUST BE BURNISHED TO ACHIEVE FULL BRAKING EFFECTIVENESS. Braking distance will be extended until brake pads are properly burnished.

TO PROPERLY BURNISH THE BRAKES, USE FOLLOWING PROCEDURE:

- Choose an area sufficiently large to safely accelerate ATV to 30 mph and to brake to a stop.
- Accelerate to 30 mph; then compress brake lever to decelerate to 0-5 mph.
- Repeat procedure five times until brakes are burnished.
- This procedure burnishes the brake pads, stabilizes the pad material, and extends the life of the brake pads.

 **WARNING**

Do not attempt sudden stops or put the ATV into a situation where a sudden stop will be required until the brake pads are properly burnished.

■ **NOTE:** Do not be reluctant to heat up the brake pads during the burnishing procedure.

After the completion of the break-in period, the engine oil and oil filter should be changed. Other maintenance after break-in should include checking of all prescribed adjustments and tightening of all fasteners.

Gasoline - Oil - Lubricant

RECOMMENDED GASOLINE

The recommended gasoline to use is 87 minimum octane regular unleaded. In many areas, oxygenates (either ethanol or MTBE) are added to the gasoline. Oxygenated gasolines containing up to 10% ethanol, 5% methane, or 5% MTBE are acceptable gasolines.

When using ethanol blended gasoline, it is not necessary to add a gasoline antifreeze since ethanol will prevent the accumulation of moisture in the fuel system.

 **CAUTION**

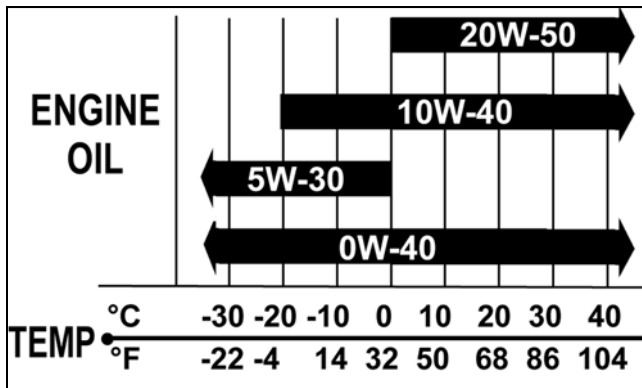
Do not use white gas. Only Arctic Cat approved gasoline additives should be used.

RECOMMENDED ENGINE/ TRANSMISSION OIL

 **CAUTION**

Any oil used in place of the recommended oil could cause serious engine damage. Do not use oils which contain graphite or molybdenum additives. These oils can adversely affect clutch operation. Also, not recommended are racing, vegetable, non-detergent, and castor-based oils.

The recommended oil to use is Arctic Cat 4-Cycle Engine Oil (p/n 0436-005) or an equivalent oil which is rated SE, SF, or SG under API service classification. These oils meet all of the lubrication requirements of the Arctic Cat ATV engine. The recommended engine oil viscosity is SAE 10W-40. Ambient temperature should determine the correct weight of oil. See the following viscosity chart for details.



OILCHARTB

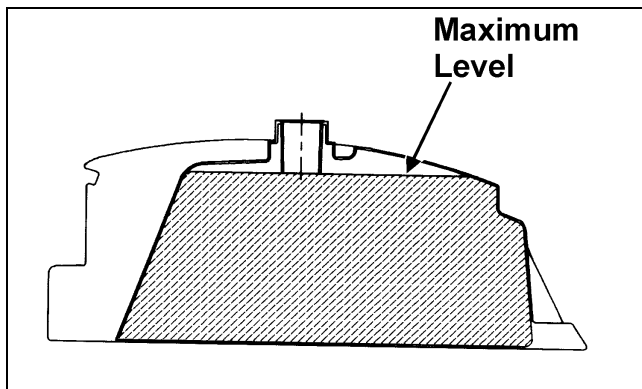
RECOMMENDED FRONT DIFFERENTIAL/REAR DRIVE LUBRICANT

The recommended lubricant is Arctic Cat Gear Lube (p/n 0436-007) or an equivalent gear lube which is SAE approved 80W-90 hypoid. This lubricant meets all of the lubrication requirements of the Arctic Cat ATV front differentials and rear drives.

CAUTION
Any lubricant used in place of the recommended lubricant could cause serious front differential/rear drive damage.

FILLING GAS TANK

WARNING
Always fill the gas tank in a well-ventilated area. Never add fuel to the ATV gas tank near any open flames or with the engine running. **DO NOT SMOKE** while filling the gas tank.



ATV0049B

Since gasoline expands as its temperature rises, the gas tank must be filled to its rated capacity only. Expansion room must be maintained in the tank particularly if the tank is filled with cold gasoline and then moved to a warm area.

WARNING
Do not overflow gasoline when filling the gas tank. A fire hazard could materialize. Always allow the engine to cool before filling the gas tank.

Tighten the gas tank cap securely after filling the tank.

WARNING
Do not over-fill the gas tank.

1

Genuine Parts

When replacement of parts is necessary, use only genuine Arctic Cat ATV parts. They are precision-made to ensure high quality and correct fit. Refer to the appropriate Illustrated Parts Manual for the correct part number, quantity, and description.

Preparation For Storage

CAUTION
Prior to storing the ATV, it must be properly serviced to prevent rusting and component deterioration.

Arctic Cat recommends the following procedure to prepare the ATV for storage.

1. Clean the seat cushion (cover and base) with a damp cloth and allow it to dry.
2. Clean the ATV thoroughly by washing dirt, oil, grass, and other foreign matter from the entire ATV. Allow the ATV to dry thoroughly. **DO NOT** get water into any part of the engine or air intake.

3. Either drain the gas tank or add Fuel Stabilizer (p/n 0638-165) to the gas in the gas tank. Remove the air filter housing cover and air filter. Start the engine and allow it to idle; then using Arctic Cat Engine Storage Preserver (p/n 0636-177), rapidly inject the preserver into the air filter opening for a period of 10 to 20 seconds; then stop the engine. Install the air filter and housing cover.

⚠ CAUTION

If the interior of the air filter housing is dirty, clean the area before starting the engine.

4. Drain the carburetor float chamber.
5. Plug the exhaust hole in the exhaust system with a clean cloth.
6. Apply light oil to the upper steering post bushing and plungers of the shock absorbers.
7. Tighten all nuts, bolts, cap screws, and screws. Make sure rivets holding components together are tight. Replace all loose rivets. Care must be taken that all calibrated nuts, cap screws, and bolts are tightened to specifications.
8. On liquid cooled models, fill the cooling system to the bottom of the stand pipe in the radiator neck with properly mixed coolant.
9. Disconnect the battery cables; then remove the battery, clean the battery posts and cables, and store in a clean, dry area.
10. Store the ATV indoors in a level position.

⚠ CAUTION

Avoid storing outside in direct sunlight and avoid using a plastic cover as moisture will collect on the ATV causing rusting.

Preparation After Storage

Taking the ATV out of storage and correctly preparing it will assure many miles and hours of trouble-free riding. Arctic Cat recommends the following procedure to prepare the ATV.

1. Clean the ATV thoroughly.
2. Clean the engine. Remove the cloth from the exhaust system.

3. Check all control wires and cables for signs of wear or fraying. Replace if necessary.
4. Change the engine/transmission oil and filter.
5. On liquid cooled models, check the coolant level and add properly mixed coolant as necessary.
6. Charge the battery; then install. Connect the battery cables.

⚠ CAUTION

The ignition switch must be in the OFF position prior to installing the battery or damage may occur to the ignition system.

⚠ CAUTION

Connect the positive battery cable first; then the negative.

7. Check the entire brake systems (fluid level, pads, etc.), all controls, headlights, taillight, brakelight, and headlight aim; adjust or replace as necessary.
8. Tighten all nuts, bolts, cap screws, and screws making sure all calibrated nuts, cap screws, and bolts are tightened to specifications.
9. Check tire pressure. Inflate to recommended pressure as necessary.
10. Make sure the steering moves freely and does not bind.
11. Check the spark plug. Clean or replace as necessary.
12. Follow the recommendations found in the pre-start inspection.

SECTION 2 - PERIODIC MAINTENANCE/TUNE-UP

TABLE OF CONTENTS

Periodic Maintenance Chart.....	2-2	Engine/Transmission Oil - Filter - Strainer	2-15
Lubrication Points.....	2-3	Front Differential/Rear Drive Lubricant.....	2-17
Battery.....	2-3	Adjusting Clutch (400/500 Manual Transmission)	2-18
Fuses	2-4	Tires	2-19
Air Cleaner/Filter (400 VP).....	2-5	Steering Components	2-19
Air Cleaner/Filter	2-7	Driveshaft/Coupling	2-19
Valve/Tappet Clearance (Feeler Gauge Procedure).....	2-9	Suspension/Shock Absorbers/Bushings	2-20
Valve/Tappet Clearance (Valve Adjuster Procedure).....	2-10	Nuts/Bolts/Cap Screws.....	2-20
Valve/Tappet Clearance (650 V-Twin - Feeler Gauge Procedure)	2-10	Ignition Timing	2-20
Valve/Tappet Clearance (650 V-Twin - Valve Adjuster Procedure)	2-11	Headlight/Taillight-Brakelight	2-20
Testing Engine Compression	2-12	Switches	2-21
Spark Plug	2-13	Reverse Shift Lever	2-22
Muffler/Spark Arrester	2-13	Frame/Welds/Racks	2-24
Gas/Vent Hoses	2-14	Electrical Connections.....	2-24
Adjusting Throttle Cable.....	2-14	Hydraulic Brake Systems	2-24
Adjusting Choke Cable (650 V-Twin).....	2-14	Burnishing Brake Pads.....	2-27
Adjusting Engine RPM (Idle).....	2-14	Coolant (500/650 H1/650 V-Twin)	2-27
		Checking/Replacing V-Belt (400/500/650 H1)	2-28
		Checking/Replacing V-Belt (650 V-Twin)	2-29
		Adjusting Differential Lock Cable.....	2-32

Periodic Maintenance Chart

A = Adjust
C = Clean
D = Drain

I = Inspect
L = Lubricate
R = Replace

Item	Initial Service After Break-In (First Mo or 100 Mi)	Every Day	Every Month or Every 100 Miles	Every 3 Months or Every 300 Miles	Every 6 Months or Every 500 Miles	Every Year or Every 1500 Miles	As Needed
Battery	I		I				C
Fuses				I			R
Air Filter/Drain Tube	I	I	C*				R
Valve/Tappet Clearance	I				I		A
Engine Compression						I	
Spark Plug	I			I			R (4000 Mi or 18 Mo)
Muffler/Spark Arrester					C		R
Gas/Vent Hoses	I	I					R (2 Yrs)
Gas Tank Valve (VP)						I	C
Throttle Cable	I	I			C-L		A-R
Carb Float Chamber				D*			
Engine RPM (Idle)	I				I		A
Engine-Transmission Oil Level		I					A
Engine-Transmission Oil/Filter	R			R*			R
Oil Strainer	I				I		C
Front Differential/Rear Drive Lubricant	I						R (4 Yrs)
Clutch (Manual)	I				I		A
Tires/Air Pressure	I			I			R
Steering Components	I	I		I			R
V-Belt (Automatic)	I				I		R
Suspension (Ball joint boots, drive axle boots front and rear, tie rods, differential and rear drive bellows)	I			I*			R
Nuts/Cap Screws/Screws	I			I	I		A
Ignition Timing						I	
Headlight/Taillight-Brakelight	I	I					R
Switches	I	I					R
Reverse Shift Lever					I		A-L
Choke Cable (650 V-Twin)	I			I	C-L		R
Recoil Starter		I					C-R
Handlebar Grips		I					R
Handlebars	I	I					R
Gauges/Indicators	I	I					R
Frame/Welds/Racks	I		I		I		
Electrical Connections					I		C
Complete Brake System (Hydraulic & Auxiliary)	I	I		C			L-R
Brake Pads	I			I*			R
Brake Fluid	I			I			R (2 Yrs)
Brake Hoses	I			I			R (4 Yrs)
Coolant/Cooling System	I		I				R (2 Yrs)

* Service/Inspect more frequently when operating in adverse conditions.

**Thank you very much
for your reading.**

**Please click here and go
back to the website.**

**Then, you can
download the complete
manual instantly.**

No waiting.