

GLP/GDP40VX5, GLP/GDP40VX6, GDP45SVX5, GLP/GDP45VX6, GLP/ GDP50VX, GLP/GDP55VX (H813) SERVICE MANUAL CONTENTS

SECTION	PART NUMBER	YRM NUMBER	REV DATE
FRAME.....	524262274	0100 YRM 1243	05/14
OPERATOR'S CAB.....	524306203	0100 YRM 1290	04/14
GM 4.3L V-6 ENGINES.....	524265337	0600 YRM 1251	05/14
KUBOTA ENGINE REPAIR.....	550048607	0600 YRM 1557	03/13
KUBOTA DIESEL 3.6L ENGINE.....	550055279	0600 YRM 1579	01/14
COOLING SYSTEM.....	524223757	0700 YRM 1123	03/13
LPG FUEL SYSTEM (GM 4.3L).....	524262275	0900 YRM 1242	08/12
LPG FUEL SYSTEM GM 4.3L ENGINE WITH PSI.....	550043871	0900 YRM 1556	04/14
1 AND 2 SP PS TRANSMISSION REPAIR.....	550048681	1300 YRM 1569	08/13
DRIVE AXLE - DRY BRAKE.....	524262277	1400 YRM 1245	01/12
DRIVE AXLE AND DIFFERENTIAL ASSEMBLY REPAIR.....	524262278	1400 YRM 1246	12/13
DRIVE AXLE AND DIFFERENTIAL ASSEMBLY REPAIR.....	550055280	1400 YRM 1582	12/13
STEERING AXLE.....	524223764	1600 YRM 1133	07/13
BRAKE SYSTEM.....	524262279	1800 YRM 1247	03/13
WET BRAKES - NMHG.....	550064329	1800 YRM 1597	12/13
HYDRAULIC GEAR PUMP.....	524223766	1900 YRM 1136	04/14
HYDRAULIC CLEANLINESS PROCEDURES.....	550073240	1900 YRM 1620	12/14
MAIN CONTROL VALVE.....	524223767	2000 YRM 1137	04/14
MAIN CONTROL VALVE (WITH VARIABLE DISPLACEMENT PUMP).....	550031265	2000 YRM 1457	01/14
CYLINDER REPAIR (MAST S/N A551, A555, A559, A661, A662, A663, A66, B507, B508, B509, B551, B555, B559, B562, B563, B564, B661, B662, B663, C515, C551, C555, C559, D507, D508, D509, D515, D562, D563, D564, E509, AND E564).....	524223768	2100 YRM 1139	02/14
HIGH VOLTAGE SWITCH (HVS) IGNITION.....	524208014	2200 YRM 1097	05/14
WIRE HARNESS REPAIR.....	524223769	2200 YRM 1128	12/14
USER INTERFACE.....	524223770	2200 YRM 1130	12/14
USER INTERFACE.....	524223771	2200 YRM 1131	12/14
ELECTRICAL SYSTEM.....	524223772	2200 YRM 1142	04/14
MAST REPAIRS (S/N A513, A514, A613, A614, A702, A703, A704, A705, A706, A707, A751, A752, B513, B514, B586, B587, B588, B589, B590, B591, B749, B750, B751, B752, B753, B754).....	524265342	4000 YRM 1250	02/14
METRIC AND INCH (SAE) FASTENERS.....	524150797	8000 YRM 0231	10/13
CALIBRATION PROCEDURES.....	524223780	8000 YRM 1134	12/14
PERIODIC MAINTENANCE.....	550048690	8000 YRM 1558	12/13
CAPACITIES AND SPECIFICATIONS.....	550048683	8000 YRM 1559	07/14
DIAGRAMS AND SCHEMATICS.....	550055283	8000 YRM 1585	04/14
DIAGNOSTIC TROUBLESHOOTING MANUAL.....	524221866	9000 YRM 1112	12/14

Service information for Cummins diesel engines can be ordered through the Hyster Literature Distribution Center.
9000 YRM 1112 ON CD

PART NO. 550048602 (12/14)

SAFETY PRECAUTIONS

MAINTENANCE AND REPAIR

- The Service Manuals are updated on a regular basis, but may not reflect recent design changes to the product. Updated technical service information may be available from your local authorized Yale® dealer. Service Manuals provide general guidelines for maintenance and service and are intended for use by trained and experienced technicians. Failure to properly maintain equipment or to follow instructions contained in the Service Manual could result in damage to the products, personal injury, property damage or death.
- When lifting parts or assemblies, make sure all slings, chains, or cables are correctly fastened, and that the load being lifted is balanced. Make sure the crane, cables, and chains have the capacity to support the weight of the load.
- Do not lift heavy parts by hand, use a lifting mechanism.
- Wear safety glasses.
- DISCONNECT THE BATTERY CONNECTOR before doing any maintenance or repair on electric lift trucks. Disconnect the battery ground cable on internal combustion lift trucks.
- Always use correct blocks to prevent the unit from rolling or falling. See HOW TO PUT THE LIFT TRUCK ON BLOCKS in the **Operating Manual** or the **Periodic Maintenance** section.
- Keep the unit clean and the working area clean and orderly.
- Use the correct tools for the job.
- Keep the tools clean and in good condition.
- Always use **YALE APPROVED** parts when making repairs. Replacement parts must meet or exceed the specifications of the original equipment manufacturer.
- Make sure all nuts, bolts, snap rings, and other fastening devices are removed before using force to remove parts.
- Always fasten a DO NOT OPERATE tag to the controls of the unit when making repairs, or if the unit needs repairs.
- Be sure to follow the **WARNING** and **CAUTION** notes in the instructions.
- Gasoline, Liquid Petroleum Gas (LPG), Compressed Natural Gas (CNG), and Diesel fuel are flammable. Be sure to follow the necessary safety precautions when handling these fuels and when working on these fuel systems.
- Batteries generate flammable gas when they are being charged. Keep fire and sparks away from the area. Make sure the area is well ventilated.

NOTE: The following symbols and words indicate safety information in this manual:



WARNING

Indicates a hazardous situation which, if not avoided, could result in death or serious injury.



CAUTION

Indicates a hazardous situation which, if not avoided, could result in minor or moderate injury and property damage.

On the lift truck, the WARNING symbol and word are on orange background. The CAUTION symbol and word are on yellow background.

TABLE OF CONTENTS

General	1
Cab Replacement	2
Remove, for Lift Truck Models GLP/GDP16VX, GLP/GDP18VX, GLP/GDP20SVX, GLP/ GDP030VX (C810); GLP/GDP20-35VX (GP/GLP/GDP040-070VX) (B875, C875); and GLP/ GDP40VX5/VX6, GLP/GDP45SVX5, GLP/GDP45VX6, GLP/GDP50-55VX (GP/GLP/GDP080, 090, 100, 110, 120VX) (F813, G813, H813, J813).....	2
Install, for Lift Truck Models GLP/GDP16VX, GLP/GDP18VX, GLP/GDP20SVX, GLP/ GDP030VX (C810); GLP/GDP20-35VX (GP/GLP/GDP040-070VX) (B875, C875); and GLP/ GDP40VX5/VX6, GLP/GDP45SVX5, GLP/GDP45VX6, GLP/GDP50-55VX (GP/GLP/GDP080, 090, 100, 110, 120VX) (F813, G813, H813, J813).....	21
Remove, for Lift Truck Models GLP/GDP60VX, GLP/GDP70VX (GP/GLP/GDP135VX, GP/GLP/GDP155VX) (C878, D878, E878) and , GLP/GDP80VX, GLP/GDP80VX9, GLP/ GDP90VX (GLP/GDP170VX, GLP/GDP175VX36, GLP/GDP190VX) (A909, B909).....	22
Install, for Lift Truck Models GLP/GDP60VX, GLP/GDP70VX (GP/GLP/GDP135VX, GP/GLP/ GDP155VX) (C878, D878, E878), GLP/GDP80VX, GLP/GDP80VX9, GLP/GDP90VX (GLP/ GDP170VX, GLP/GDP175VX36, GLP/GDP190VX) (A909, B909).....	29
Door Assemblies	31
Right Side Door Assembly, Lift Truck Models GLP/GDP16VX, GLP/GDP18VX, GLP/ GDP20SVX (GP/GLP/GDP030VX, GP/GLP/GDP035VX, GP/GLP/GDP040SVX) (C810); GLP/ GDP20-35VX (GP/GLP/GDP040-070VX) (B875, C875); and GLP/GDP40VX5/VX6, GLP/ GDP45SVX5, GLP/GDP45VX6, GLP/GDP50-55VX (GP/GLP/GDP080, 090, 100, 110, 120VX) (F813, G813, H813, J813).....	31
Remove	31
Disassemble	38
Door Cover With Heater Unit	38
Door Cover With Air Conditioner/Heater Unit	40
Heater Assembly	42
Air Conditioner and Heater Unit Assembly	42
Door Lock Assembly	45
Windows	46
Clean	46
Inspect	46
Assemble	46
Windows	46
Door Lock Assembly	46
Heater Assembly	47
Air Conditioner and Heater Unit Assembly	47
Door Cover With Heater Unit	47
Door Cover With Air Conditioner and Heater Unit	48
Install	48
Left Side Door Assembly, Lift Truck Models GLP/GDP16VX, GLP/GDP18VX, GLP/GDP20SVX (GP/GLP/GDP030VX, GP/GLP/GDP035VX, GP/GLP/GDP040SVX) (C810); GLP/ GDP20-35VX (GP/GLP/GDP040-070VX) (B875, C875); and GLP/GDP40VX5/VX6, GLP/ GDP45SVX5, GLP/GDP45VX6, GLP/GDP50-55VX (GP/GLP/GDP080, 090, 100, 110, 120VX) (F813, G813, H813, J813).....	49
Remove	49
Disassemble	49
Door Cover	49
Door Lock Assembly	50
Windows	50

TABLE OF CONTENTS (Continued)

Clean	50
Inspect	50
Assemble	50
Windows	50
Door Lock Assembly	50
Door Cover	50
Install	51
Right and Left Side Door Assemblies, Lift Truck Models GLP/GDP60VX, GLP/GDP70VX (GP/GLP/GDP135VX, GP/GLP/GDP155VX) (C878, D878, E878), GLP/GDP80VX, GLP/ GDP80VX9, GLP/GDP90VX (GLP/GDP170VX, GLP/GDP175VX36, GLP/GDP190VX) (A909, B909).....	51
Remove	51
Disassemble	52
Door Cover	52
Door Lock Assembly	53
Windows	54
Clean	54
Inspect	54
Assemble	54
Windows	54
Door Lock Assembly	54
Door Cover	55
Install	55
Window Wipers Replacement	55
General	55
Front Wiper Assembly and Motor	55
Remove, Lift Truck Models GLP/GDP16VX, GLP/GDP18VX, GLP/GDP20SVX (GP/GLP/ GDP030VX, GP/GLP/GDP035VX, GP/GLP/GDP040SVX) (C810) and GLP/GDP20-35VX (GP/GLP/GDP040-070VX) (B875, C875).....	55
Install, Lift Truck Models GLP/GDP16VX, GLP/GDP18VX, GLP/GDP20SVX (GP/GLP/ GDP030VX, GP/GLP/GDP035VX, GP/GLP/GDP040SVX) (C810) and GLP/GDP20-35VX (GP/GLP/GDP040-070VX) (B875, C875).....	57
Remove, Lift Truck Models GLP/GDP40VX5/VX6, GLP/GDP45SVX5, GLP/GDP45VX6, GLP/GDP50-55VX (GP/GLP/GDP080, 090, 100, 110, 120VX) (F813, G813, H813, J813), GLP/GDP60VX, GLP/GDP70VX (GP/GLP/GDP135VX, GP/GLP/GDP155VX) (C878, D878, E878), GLP/GDP80VX, GLP/GDP80VX9, GLP/GDP90VX (GLP/GDP170VX, GLP/ GDP175VX36, GLP/GDP190VX) (A909, B909).....	57
Install, Lift Truck Models GLP/GDP40VX5/VX6, GLP/GDP45SVX5, GLP/GDP45VX6, GLP/ GDP50-55VX (GP/GLP/GDP080, 090, 100, 110, 120VX) (F813, G813, H813, J813), GLP/ GDP60VX, GLP/GDP70VX (GP/GLP/GDP135VX, GP/GLP/GDP155VX) (C878, D878, E878), and GLP/GDP80VX, GLP/GDP80VX9, GLP/GDP90VX (GLP/GDP170VX, GLP/ GDP175VX36, GLP/GDP190VX) (A909, B909).....	61
Rear Wiper Assembly and Motor	62
Remove, Lift Truck Models GLP/GDP16VX, GLP/GDP18VX, GLP/GDP20SVX (GP/GLP/ GDP030VX, GP/GLP/GDP035VX, GP/GLP/GDP040SVX) (C810).....	62
Install, Lift Truck Models GLP/GDP16VX, GLP/GDP18VX, GLP/GDP20SVX (GP/GLP/ GDP030VX, GP/GLP/GDP035VX, GP/GLP/GDP040SVX) (C810).....	62
Remove, Lift Truck Models GLP/GDP20-35VX (GP/GLP/GDP040-070VX) (B875, C875).....	64
Install, Lift Truck Models GLP/GDP20-35VX (GP/GLP/GDP040-070VX) (B875, C875).....	64
Remove, Lift Truck Models GLP/GDP40VX5/VX6, GLP/GDP45SVX5, GLP/GDP45VX6, GLP/GDP50-55VX (GP/GLP/GDP080, 090, 100, 110, 120VX) (F813, G813, H813, J813).....	67

TABLE OF CONTENTS (Continued)

Install, Lift Truck Models GLP/GDP40VX5/VX6, GLP/GDP45SVX5, GLP/GDP45VX6, GLP/ GDP50-55VX (GP/GLP/GDP080, 090, 100, 110, 120VX) (F813, G813, H813, J813).....	67
Remove, Lift Truck Models GLP/GDP60VX, GLP/GDP70VX (GP/GLP/GDP135VX, GP/GLP/GDP155VX) (C878, D878, E878), GLP/GDP80VX, GLP/GDP80VX9, GLP/ GDP90VX (GLP/GDP170VX, GLP/GDP175VX36, GLP/GDP190VX) (A909, B909).....	69
Install, Lift Truck Models GLP/GDP60VX, GLP/GDP70VX (GP/GLP/GDP135VX, GP/GLP/ GDP155VX) (C878, D878, E878) and GLP/GDP80VX, GLP/GDP80VX9, GLP/GDP90VX (GLP/GDP170VX, GLP/GDP175VX36, GLP/GDP190VX) (A909, B909).....	69
Window Replacement	71
General	71
Remove Door Window, Lift Truck Models GLP/GDP16VX, GLP/GDP18VX, GLP/GDP20SVX (GP/GLP/GDP030VX, GP/GLP/GDP035VX, GP/GLP/GDP040SVX) (C810); GLP/ GDP20-35VX (GP/GLP/GDP040-070VX) (B875, C875); and GLP/GDP40VX5/VX6, GLP/ GDP45SVX5, GLP/GDP45VX6, GLP/GDP50-55VX (GP/GLP/GDP080, 090, 100, 110, 120VX) (F813, G813, H813, J813).....	71
Install Door Windows, Lift Truck Models GLP/GDP16VX, GLP/GDP18VX, GLP/GDP20SVX (GP/GLP/GDP030VX, GP/GLP/GDP035VX, GP/GLP/GDP040SVX) (C810); GLP/ GDP20-35VX (GP/GLP/GDP040-070VX) (B875, C875); and GLP/GDP40VX5/VX6, GLP/ GDP45SVX5, GLP/GDP45VX6, GLP/GDP50-55VX (GP/GLP/GDP080, 090, 100, 110, 120VX) (F813, G813, H813, J813).....	72
Remove Door Window, Lift Truck Models GLP/GDP60VX, GLP/GDP70VX (GP/GLP/ GDP135VX, GP/GLP/GDP155VX) (C878, D878, E878) and GLP/GDP80VX, GLP/GDP80VX9, GLP/GDP90VX (GLP/GDP170VX, GLP/GDP175VX36, GLP/GDP190VX) (A909, B909)	72
Install Door Window, Lift Truck Models GLP/GDP60VX, GLP/GDP70VX (GP/GLP/GDP135VX, GP/GLP/GDP155VX) (C878, D878, E878) and GLP/GDP80VX, GLP/GDP80VX9, GLP/ GDP90VX (GLP/GDP170VX, GLP/GDP175VX36, GLP/GDP190VX) (A909, B909).....	74
Heater Replacement	74
Remove, for Lift Truck Models GLP/GDP60VX, GLP/GDP70VX (GP/GLP/GDP135VX, GP/GLP/GDP155VX) (C878, D878, E878) and GLP/GDP80VX, GLP/GDP80VX9, GLP/ GDP90VX (GLP/GDP170VX, GLP/GDP175VX36, GLP/GDP190VX) (A909, B909).....	74
Install, for Lift truck Models GLP/GDP60VX, GLP/GDP70VX (GP/GLP/GDP135VX, GP/GLP/ GDP155VX) (C878, D878, E878) and GLP/GDP80VX, GLP/GDP80VX9, GLP/GDP90VX (GLP/GDP170VX, GLP/GDP175VX36, GLP/GDP190VX) (A909, B909).....	77
Heater and Air Conditioner Assembly	78
Air Conditioner Condenser Unit	78
Remove	78
Install	79
Air Conditioner Receiver/Drier Unit	80
Remove	80
Install	81
Air Conditioner Compressor	81
Light Replacement	82
Work Lights (Front and Rear)	82
Remove	82
Install	82
Strobe Light	84
Remove	84
Install	85
Turn, Stop, Tail, and Backup Light	85
Remove	85

TABLE OF CONTENTS (Continued)

Install	85
Front Marker/Turn Signal Lights	86
Remove	86
Install	86
Display Switches	87
Electrical Schematics	91
Optional Equipment	91
Heavy Duty Pre-Cleaner	91
Remove	91
Clean	92
Inspect	92
Install	92
Fan	93
Remove	93
Install	93
Mirror	93
Remove	93
Install	93
Label Replacement	95

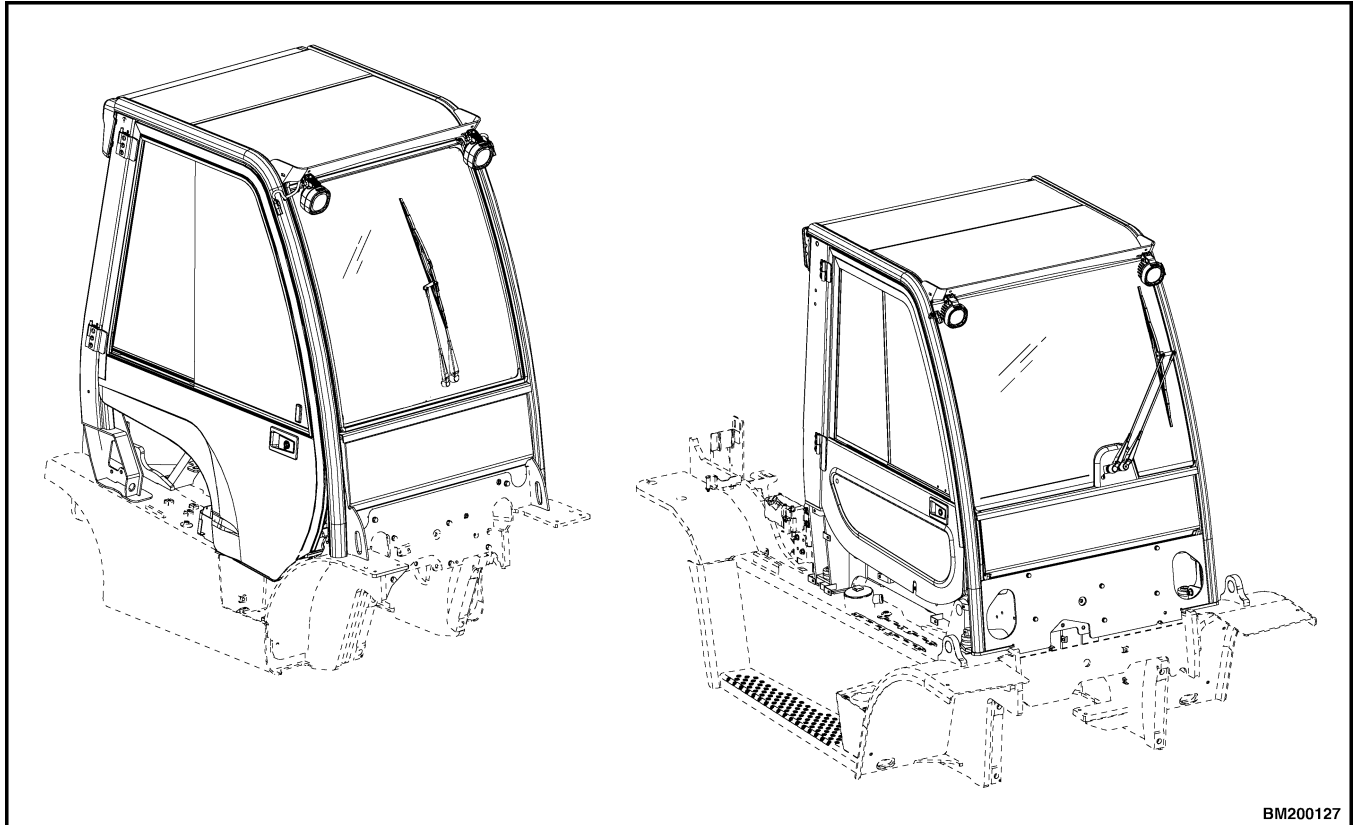
This section is for the following models:

GLP/GDP16VX, GLP/GDP18VX, GLP/GDP20SVX, GLP/GDP030VX [C810];
 GLP/GDP20-35VX (GP/GLP/GDP040-070VX) [B875, C875];
 GLP/GDP40VX5/VX6; GLP/GDP45SVX5, GLP/GDP45VX6; GLP/GDP50-55VX
 (GP/GLP/GDP080, 090, 100, 110, 120VX) [F813, G813, H813, J813];
 GLP/GDP60VX, GLP/GDP70VX (GP/GLP/GDP135VX, GP/GLP/GDP155VX)
 [C878, D878, E878];
 GLP/GDP80VX, GLP/GDP80VX9, GLP/GDP90VX (GLP/GDP170VX, GLP/
 GDP175VX36, GLP/GDP190VX) [A909, B909]

General

The overhead guard is an integral part of operator cab. The operator cab is installed on a platform above main frame members. Step plates on both sides of lift truck provide access to operator cab. The operator

cab is a separate unit and can be removed as a complete unit from module and frame of the lift truck. See Figure 1.



BM200127

Figure 1. Operator Cab

Cab Replacement

REMOVE, FOR LIFT TRUCK MODELS GLP/GDP16VX, GLP/GDP18VX, GLP/GDP20SVX, GLP/GDP030VX (C810); GLP/GDP20-35VX (GP/GLP/GDP040-070VX) (B875, C875); AND GLP/GDP40VX5/VX6, GLP/GDP45SVX5, GLP/GDP45VX6, GLP/GDP50-55VX (GP/GLP/GDP080, 090, 100, 110, 120VX) (F813, G813, H813, J813)

NOTE: The EZ Tank Bracket used on these trucks to mount LPG tank onto counterweight come in two styles. One style of bracket swings out to side of truck and other swings out to side and drops down.

NOTE: On lift trucks equipped with LPG, make sure to release EZ Tank Bracket before opening hood.

1. For lift truck models GLP/GDP16VX, GLP/GDP18VX, GLP/GDP20SVX, GLP/GDP030VX (C810), tilt steering column to **UP** position, slide seat assembly forward, open rear door, and open hood to disconnect battery. See Figure 2.
2. Tilt steering column to **UP** position, slide seat assembly forward, open rear sliding window, and open hood to disconnect battery.

See Figure 3 for lift truck models

- GLP/GDP20-35VX (GP/GLP/GDP040-070VX) (B875, C875)
 - GLP/GDP40VX5/VX6; GLP/GDP45SVX5, GLP/GDP45VX6; GLP/GDP50-55VX (GP/GLP/GDP080, 090, 100, 110, 120VX) (F813, G813, H813, J813)
3. Disconnect air filter hose from rear left corner leg of cab frame. See Figure 4.

WARNING

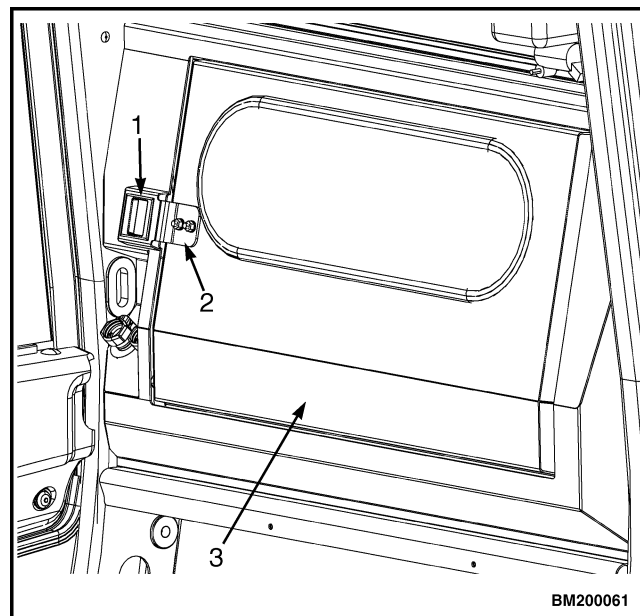
DO NOT disconnect the heater hoses from the engine when the engine is hot or when the cooling system is under pressure, to do so could cause serious injury.

WARNING

DO NOT remove the radiator cap from the radiator when the engine is hot. When the radiator is hot and the cap is removed, the pressure is released from the system and the steam and boiling coolant can cause burns. Wait 30 minutes for the engine to cool. Do a touch test by touching the radiator with your hand. If the radiator is still hot to the touch, wait another 30 minutes before attempting to remove, check, or fix any part of the cooling system.

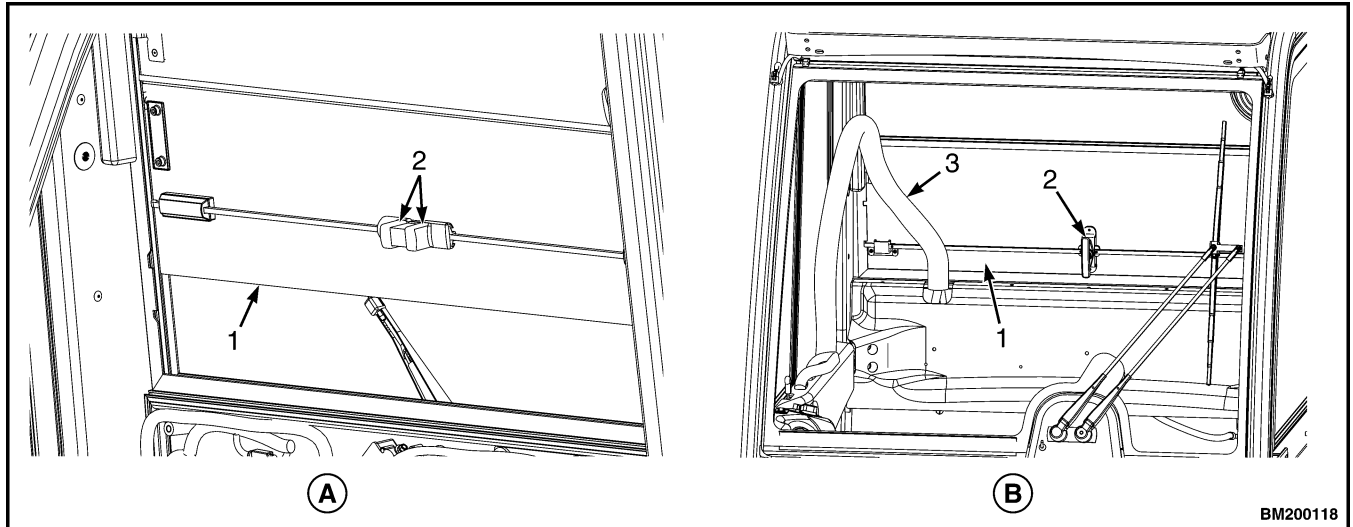
NOTE: Removing radiator cap will help depressurize cooling system.

4. Remove radiator cover to access radiator cap. Remove radiator cap. See Figure 5.



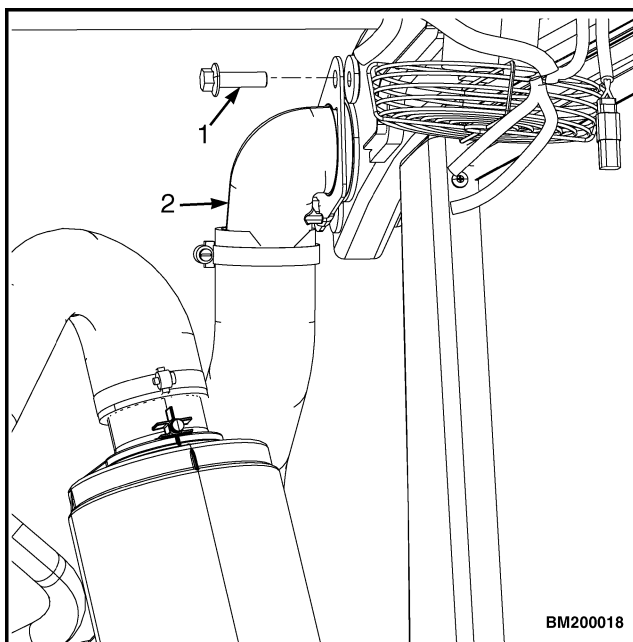
1. LATCH
2. HINGE
3. REAR DOOR

Figure 2. Rear Door and Latch for Lift Truck Models GLP/GDP16VX, GLP/GDP18VX, GLP/GDP20SVX, GLP/GDP030VX (C810)



- A. LIFT TRUCKS MODELS GLP/GDP20-35VX (GP/GLP/GDP040-070VX) (B875, C875) AND GLP/GDP40VX5/VX6, GLP/GDP45SVX5, GLP/GDP45VX6, GLP/GDP50-55VX (GP/GLP/GDP080, 090, 100, 110, 120VX) (F813, G813, H813, J813) WITHOUT AIR CONDITIONING.
 - B. LIFT TRUCKS MODELS GLP/GDP40VX5/VX6, GLP/GDP45SVX5, GLP/GDP45VX6, GLP/GDP50-55VX (GP/GLP/GDP080, 090, 100, 110, 120VX) (G813, H813, J813) WITH AIR CONDITIONING.
- 1. REAR BOTTOM WINDOW
 - 2. RELEASE LATCH
 - 3. AC HOSE

Figure 3. Rear Bottom Window for Lift Trucks Models GLP/GDP20-35VX (GP/GLP/GDP040-070VX) (B875, C875) and GLP/GDP40VX5/VX6, GLP/GDP45SVX5, GLP/GDP45VX6, GLP/GDP50-55VX (GP/GLP/GDP080, 090, 100, 110, 120VX) (F813, G813, H813, J813)

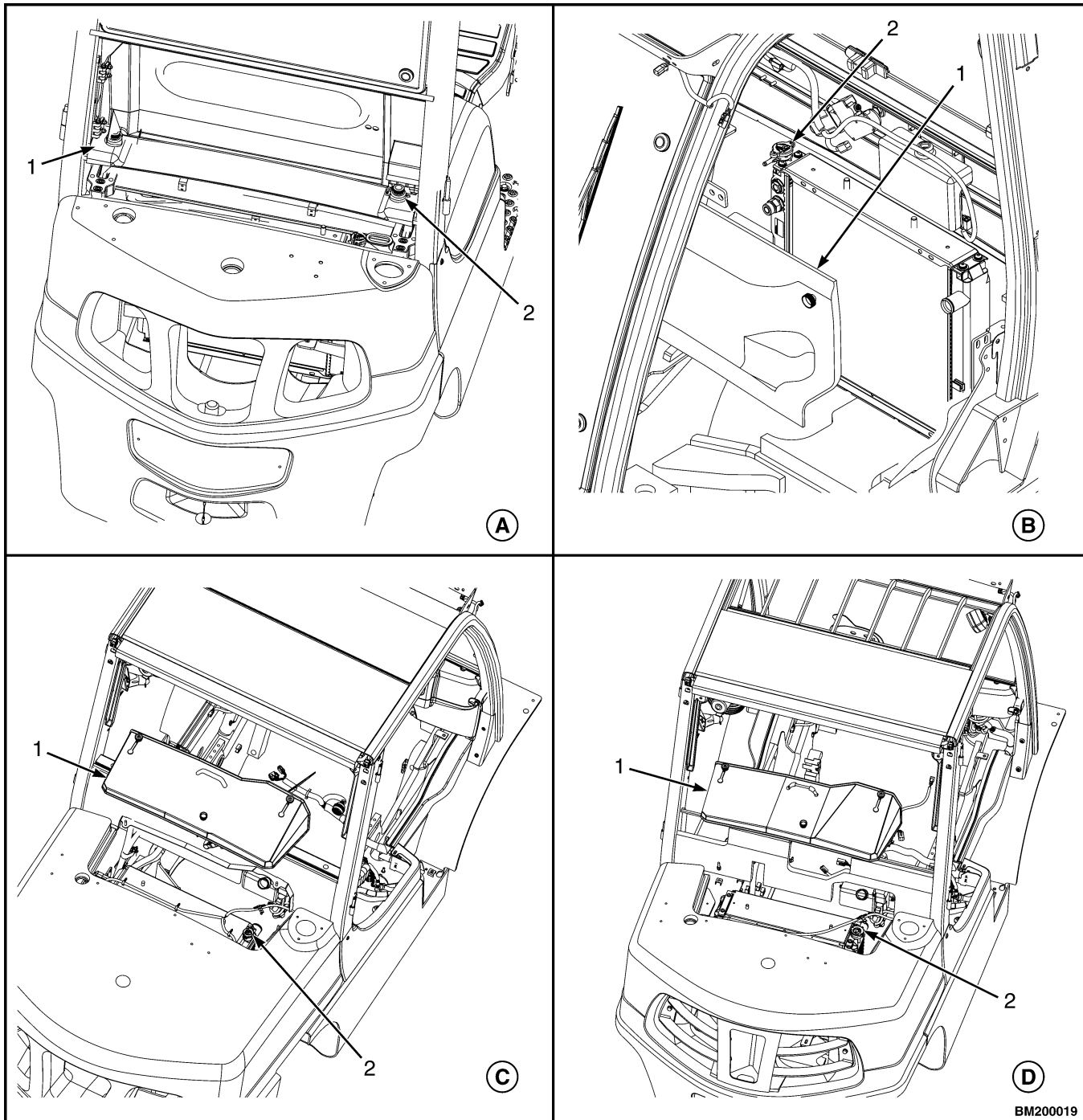


Legend for Figure 4

NOTE: AIR FILTER HOSE FOR GLP/GDP40VX5/VX6, GLP/GDP45SVX5, GLP/GDP45VX6, GLP/GDP50-55VX (GP/GLP/GDP080, 090, 100, 110, 120VX) (F813) SHOWN. AIR FILTER HOSE FOR OTHER LIFT TRUCK MODELS ARE SIMILAR.

- 1. CAPSCREW
- 2. AIR FILTER HOSE

Figure 4. Air Filter Hose Removal



- A. GLP/GDP16VX, GLP/GDP18VX, GLP/GDP20SVX, GLP/GDP030VX (C810)
- B. GLP/GDP20-35VX (GP/GLP/GDP040-070VX) (B875, C875)
- C. GLP/GDP40VX5/VX6; GLP/GDP45SVX5, GLP/GDP45VX6; GLP/GDP50-55VX (GP/GLP/GDP080, 090, 100, 110, 120VX) (F813, G813, H813)
- D. GLP/GDP40VX5/VX6; GLP/GDP45SVX5, GLP/GDP45VX6; GLP/GDP50-55VX (GP/GLP/GDP080, 090, 100, 110, 120VX) (J813)

1. RADIATOR COVER

2. RADIATOR CAP

Figure 5. Radiator Cover and Cap Location

**CAUTION**

DO NOT allow any fluid to drain when disconnecting the heater hose from the engine. The method will help when purging the system during installation.

5. Disconnect and cap heater hoses from engine. See Figure 6.

**WARNING**

Replacement, installation and repairs to air conditioning units that require discharging and/or refilling of the refrigeration fluid must be performed by a certified technician.

6. Contact a certified air conditioning specialist to have the refrigerant extracted from the air conditioning system.

NOTE: Step 7 is for lift truck models GLP/GDP40VX5/VX6; GLP/GDP45SVX5, GLP/GDP45VX6; GLP/GDP50-55VX (GP/GLP/GDP080, 090, 100, 110, 120VX) (G813, H813, J813) with a Cummins QSB 3.3L or a Kubota diesel engine.

7. If lift truck cab is equipped with an air conditioner/heater unit, disconnect AC refrigerant hoses from refrigerant compressor.

See Figure 7 for lift truck models

- GLP/GDP40VX5/VX6; GLP/GDP45SVX5, GLP/GDP45VX6; GLP/GDP50-55VX (GP/GLP/GDP080, 090, 100, 110, 120VX) (G813)

See Figure 8 for lift truck models

- GLP/GDP40VX5/VX6; GLP/GDP45SVX5, GLP/GDP45VX6; GLP/GDP50-55VX (GP/GLP/GDP080, 090, 100, 110, 120VX) (H813, J813)

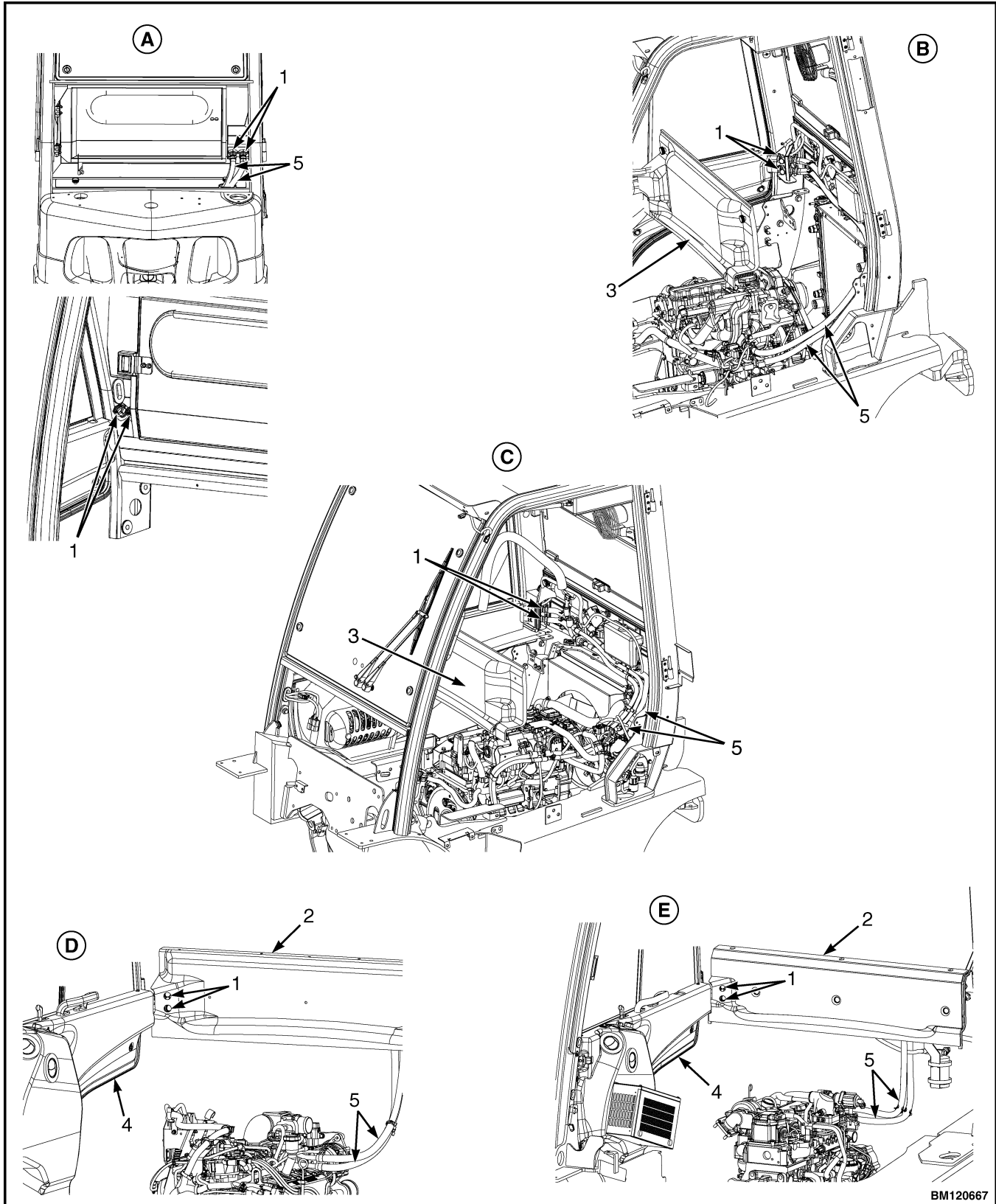
NOTE: Removing door assemblies requires two people.

8. Open left side door, remove lock nut, and disconnect gas spring from cab mounting bracket. See Figure 9.
9. Lift left side door up and over hinge pin and set aside. See Figure 10.

**WARNING**

DO NOT disconnect the heater hoses from the quick disconnect fittings (inside operator cab) or engine when the engine is hot or under pressure, to do so could cause serious injury.

10. Disconnect heater hose quick disconnect fittings.
 - a. For lift truck models GLP/GDP16VX, GLP/GDP18VX, GLP/GDP20SVX, GLP/GDP030VX (C810), open right side door and push buttons on quick disconnect fittings to disconnect heater hoses from heater assembly hoses (see Figure 6). Disconnect heater wire harness connection. See Figure 11.
 - b. For lift truck models GLP/GDP20-35VX (GP/GLP/GDP040-070VX) (B875, C875), open right side door and remove radiator cover to access quick disconnect fittings. Push buttons on quick disconnect fittings to disconnect heater hoses from heater assembly (see Figure 6). Disconnect heater wire harness connection. See Figure 11.
 - c. For lift truck models GLP/GDP40VX5/VX6; GLP/GDP45SVX5, GLP/GDP45VX6; GLP/GDP50-55VX (GP/GLP/GDP080, 090, 100, 110, 120VX) (F813, G813, H813, J813), open right side door and located on inner rear cover there are two port holes (see Figure 6). Push buttons on quick disconnect fittings to disconnect heater hoses from heater assembly and disconnect heater wire harness connection. See Figure 11.



BM120667

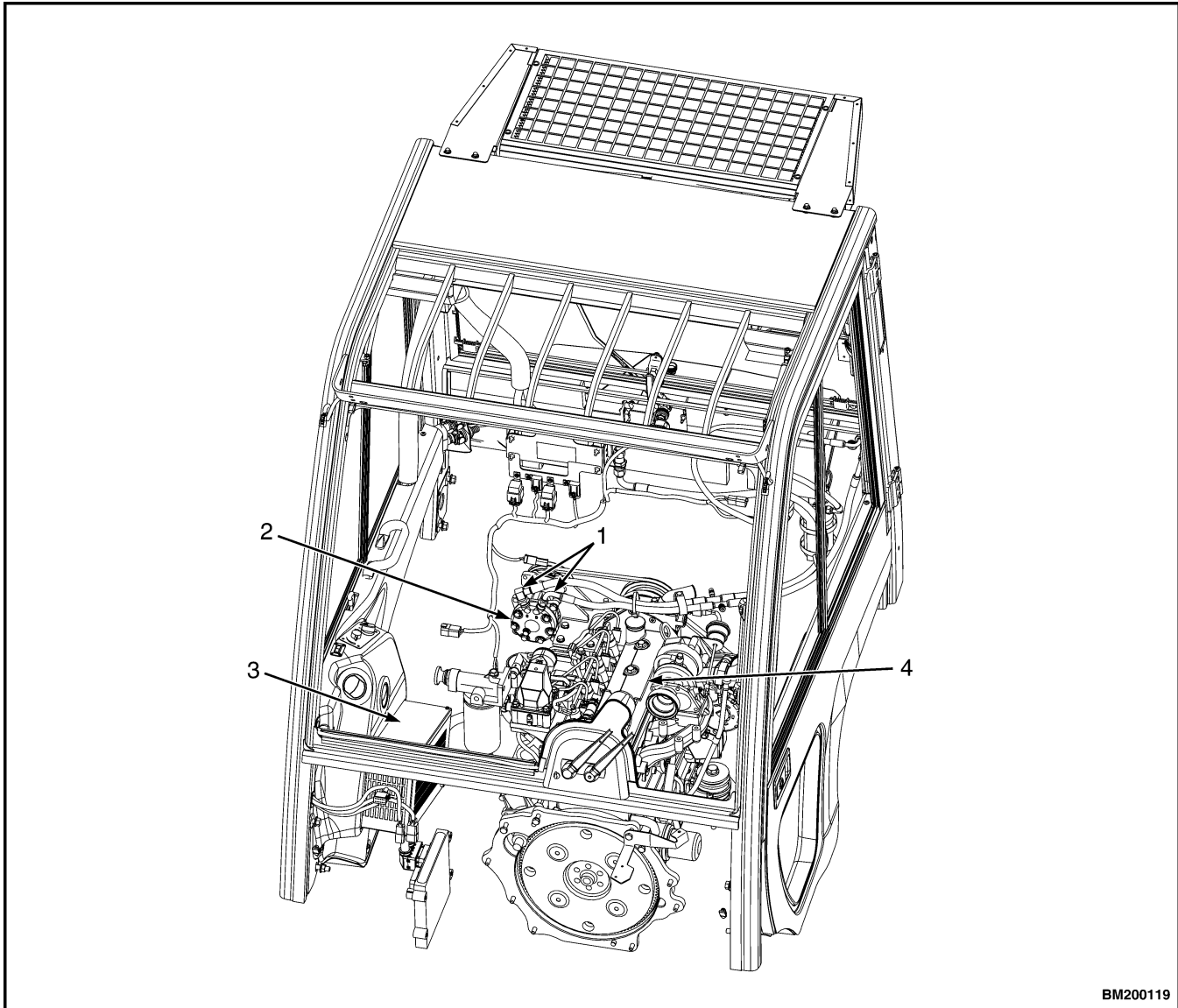
Figure 6. Heater Hose Connection

Legend for Figure 6

NOTE: ART SHOWN MAY NOT REFLECT ENGINE IN LIFT TRUCK.

NOTE: MAJOR COMPONENTS OF CAB HAVE BEEN REMOVED FOR CLARITY.

- A. LIFT TRUCK MODELS GLP/GDP16VX, GLP/GDP18VX, GLP/GDP20SVX, GLP/GDP030VX (C810)
 - B. LIFT TRUCK MODELS GLP/GDP20-35VX (GP/GLP/GDP040-070VX) (B875, C875)
 - C. LIFT TRUCK MODELS GLP/GDP20-35VX (GP/GLP/GDP040-070VX) (B875, C875)
 - D. LIFT TRUCK MODELS GLP/GDP40VX5/VX6; GLP/GDP45SVX5, GLP/GDP45VX6; GLP/GDP50-55VX (GP/GLP/GDP080, 090, 100, 110, 120VX) (F813, G813)
 - E. LIFT TRUCK MODELS GLP/GDP40VX5/VX6; GLP/GDP45SVX5, GLP/GDP45VX6; GLP/GDP50-55VX (GP/GLP/GDP080, 090, 100, 110, 120VX) (H813, J813)
1. QUICK DISCONNECT FITTING
 2. INNER REAR COVER
 3. RADIATOR COVER
 4. RIGHT SIDE DOOR ASSEMBLY
 5. HEATER HOSES

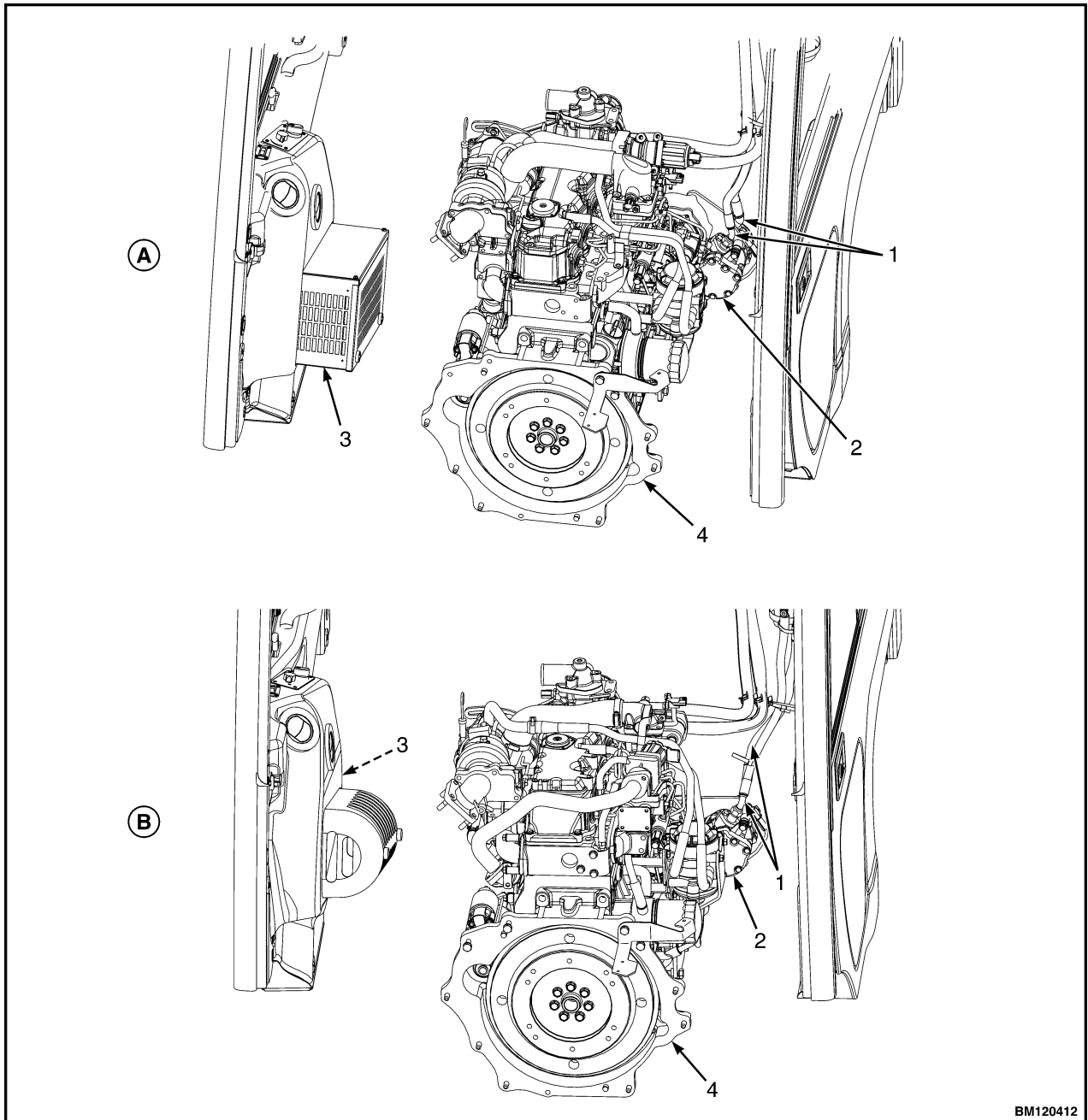


BM200119

NOTE: MAJOR COMPONENTS OF CAB HAVE BEEN REMOVED FOR CLARITY.

- | | |
|---------------------------|-------------------|
| 1. HOSE FITTING | 3. AC/HEATER UNIT |
| 2. REFRIGERANT COMPRESSOR | 4. ENGINE |

Figure 7. AC Refrigerant Hose Connections, Lift Truck Models GLP/GDP40VX5/VX6; GLP/GDP45SVX5, GLP/GDP45VX6; GLP/GDP50-55VX (GP/GLP/GDP080, 090, 100, 110, 120VX) (G813) with Cummins QSB 3.3L Engine



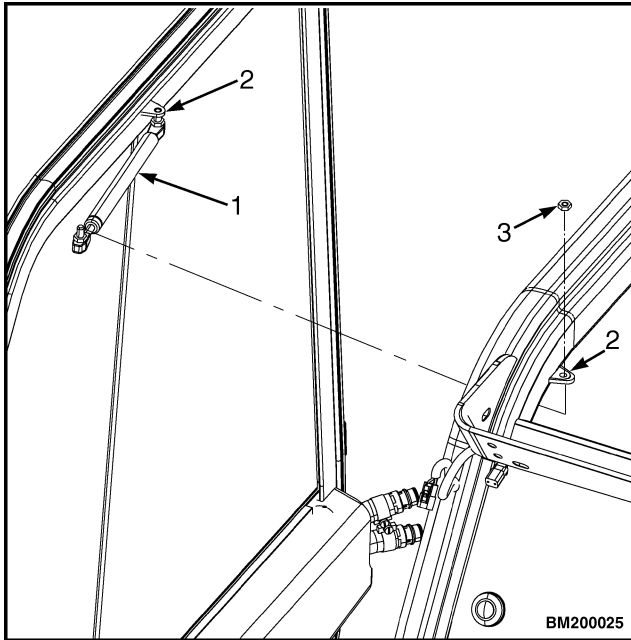
BM120412

NOTE: MAJOR COMPONENTS OF CAB HAVE BEEN REMOVED FOR CLARITY. KUBOTA 3.8L DIESEL ENGINE SHOWN, 3.6L DIESEL ENGINE SIMILAR.

- A.** LIFT TRUCK MODELS GLP/GDP40VX5/VX6; GLP/GDP45SVX5, GLP/GDP45VX6; GLP/GDP50-55VX (GP/GLP/GDP080, 090, 100, 110, 120VX) (H813)
B. LIFT TRUCK MODELS GLP/GDP40VX5/VX6; GLP/GDP45SVX5, GLP/GDP45VX6; GLP/GDP50-55VX (GP/GLP/GDP080, 090, 100, 110, 120VX) (J813)

1. HOSE FITTING
 2. REFRIGERANT COMPRESSOR
 3. AC/HEATER UNIT
 4. ENGINE

Figure 8. AC Refrigerant Hose Connection, Lift Truck Models GLP/GDP40VX5/VX6; GLP/GDP45SVX5, GLP/GDP45VX6; GLP/GDP50-55VX (GP/GLP/GDP080, 090, 100, 110, 120VX) (H813, J813) with Kubota Diesel Engine



NOTE: RIGHT SIDE DOOR SHOWN.

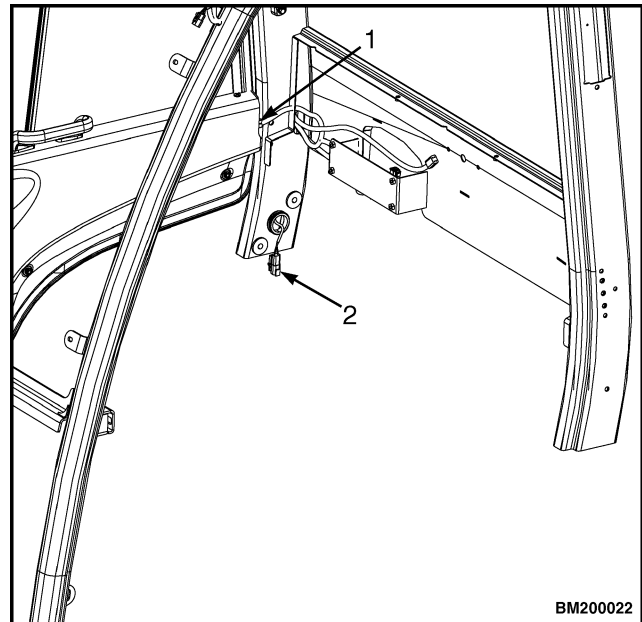
1. GAS SPRING
2. CAB MOUNTING BRACKET
3. LOCK NUT

Figure 9. Gas Spring Mounting Removal

Legend for Figure 10

NOTE: RIGHT SIDE DOOR HINGE SHOWN.

1. HINGE PIN
2. DOOR HINGE



NOTE: MAJOR COMPONENTS OF CAB HAVE BEEN REMOVED FOR CLARITY.

1. HEATER WIRE HARNESS CONNECTOR
2. REAR GRAB HANDLE HORN BUTTON CONNECTOR (TO RIGHT-HAND CHASSIS HARNESS)

Figure 11. Heater Wire Harness and Rear Grab Handle Horn Button Connectors

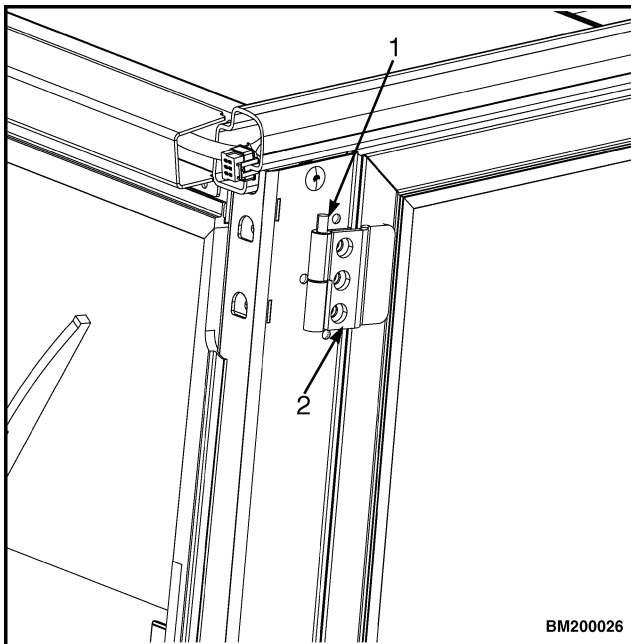


Figure 10. Door Removal

11. For lift truck models GLP/GDP40VX5/VX6; GLP/GDP45SVX5, GLP/GDP45VX6; GLP/GDP50-55VX (GP/GLP/GDP080, 090, 100, 110, 120VX) (G813, H813, J813) with a Cummins QSB 3.3L or Kubota diesel engine, if lift truck cab is equipped with an air conditioner/heater unit, disconnect AC hoses.

a. Remove six fasteners and remove rear cover.

See Figure 12 for lift truck models

- GLP/GDP40VX5/VX6; GLP/GDP45SVX5, GLP/GDP45VX6; GLP/GDP50-55VX (GP/GLP/GDP080, 090, 100, 110, 120VX) (G813)

See Figure 13 for lift truck models

- GLP/GDP40VX5/VX6; GLP/GDP45SVX5, GLP/GDP45VX6; GLP/GDP50-55VX (GP/GLP/GDP080, 090, 100, 110, 120VX) (H813)

See Figure 14 for lift truck models

- GLP/GDP40VX5/VX6; GLP/GDP45SVX5, GLP/GDP45VX6; GLP/GDP50-55VX (GP/GLP/GDP080, 090, 100, 110, 120VX) (J813)

b. Disconnect air conditioner hoses at bulkhead bracket and at receiver/drier.

See Figure 12 for lift truck models

- GLP/GDP40VX5/VX6; GLP/GDP45SVX5, GLP/GDP45VX6; GLP/GDP50-55VX (GP/GLP/GDP080, 090, 100, 110, 120VX) (G813)

See Figure 13 for lift truck models

- GLP/GDP40VX5/VX6; GLP/GDP45SVX5, GLP/GDP45VX6; GLP/GDP50-55VX (GP/GLP/GDP080, 090, 100, 110, 120VX) (H813)

See Figure 14 for lift truck models

- GLP/GDP40VX5/VX6; GLP/GDP45SVX5, GLP/GDP45VX6; GLP/GDP50-55VX (GP/GLP/GDP080, 090, 100, 110, 120VX) (J813)

c. Disconnect air conditioner wire harness.

See Figure 12 for lift truck models

- GLP/GDP40VX5/VX6; GLP/GDP45SVX5, GLP/GDP45VX6; GLP/GDP50-55VX (GP/GLP/GDP080, 090, 100, 110, 120VX) (G813)

See Figure 13 for lift truck models

- GLP/GDP40VX5/VX6; GLP/GDP45SVX5, GLP/GDP45VX6; GLP/GDP50-55VX (GP/GLP/GDP080, 090, 100, 110, 120VX) (H813)

See Figure 14 for lift truck models

- GLP/GDP40VX5/VX6; GLP/GDP45SVX5, GLP/GDP45VX6; GLP/GDP50-55VX (GP/GLP/GDP080, 090, 100, 110, 120VX) (J813)

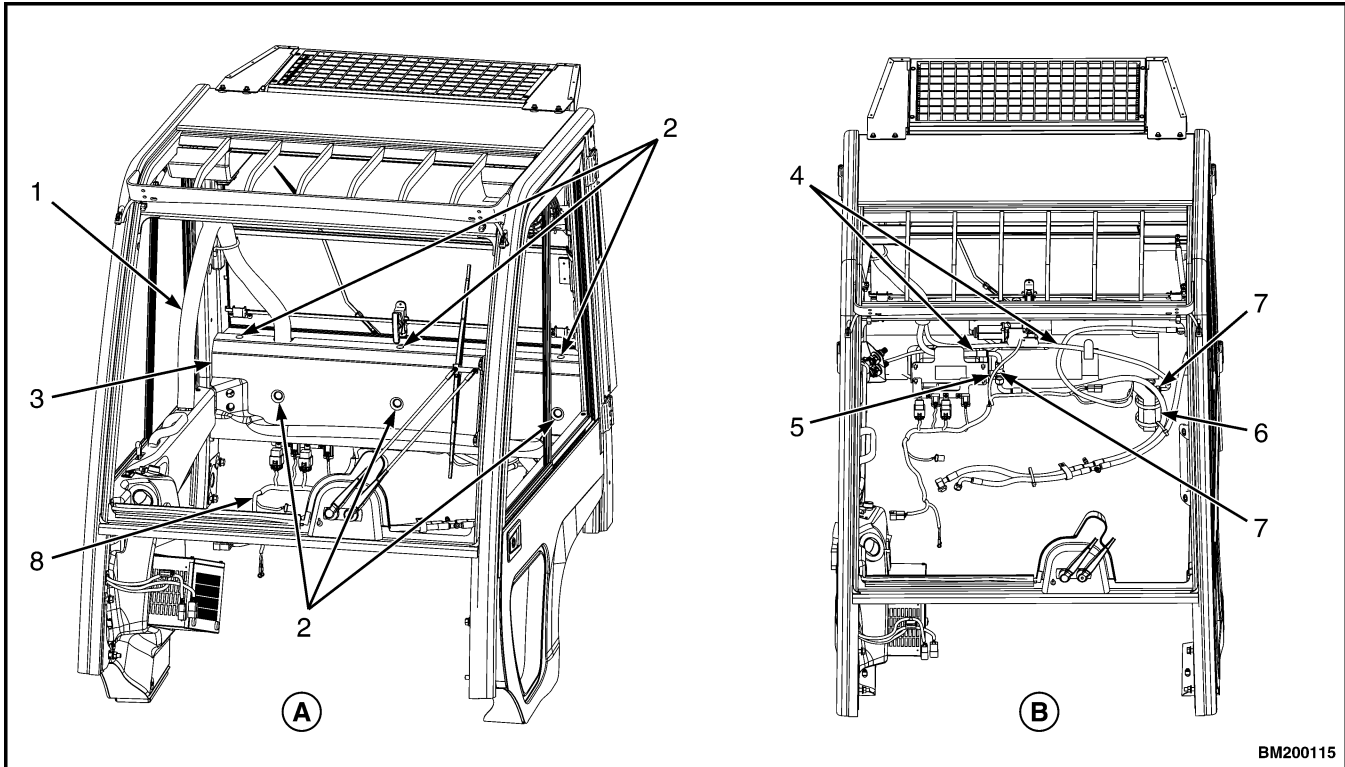
12. Remove lock nut and disconnect gas spring from cab mounting bracket. See Figure 9.

13. Lift door up and over hinge pin and set aside. See Figure 10.

NOTE: Wiper motor cover must be removed before dash assembly can be removed.

14. Unclip and remove front wiper motor cover. See Figure 15 for lift truck models

- GLP/GDP16VX, GLP/GDP18VX, GLP/GDP20SVX, GLP/GDP030VX (C810)
- GLP/GDP20-35VX (GP/GLP/GDP040-070VX) (B875, C875)



BM200115

NOTE: MAJOR COMPONENTS OF CAB HAVE BEEN REMOVED FOR CLARITY.

A. FRONT VIEW

- 1. HOSE WRAP
- 2. FASTENERS
- 3. REAR COVER
- 4. AIR CONDITIONER HOSES

B. TOP VIEW

- 5. BULKHEAD BRACKET
- 6. RECEIVER/DRIER
- 7. FITTINGS
- 8. AIR CONDITIONER WIRE HARNESS

Figure 12. AC System Arrangement and Hose Connections, Lift Truck Models GLP/GDP40VX5/VX6; GLP/GDP45SVX5, GLP/GDP45VX6; GLP/GDP50-55VX (GP/GLP/GDP080, 090, 100, 110, 120VX) (G813) With a Cummins QSB 3.3L Diesel Engine

**Thank you very much for
your reading. Please Click
Here. Then Get COMPLETE
MANUAL. NO WAITING**



NOTE:

**If there is no response to
click on the link above,
please download the PDF
document first and then
click on it.**