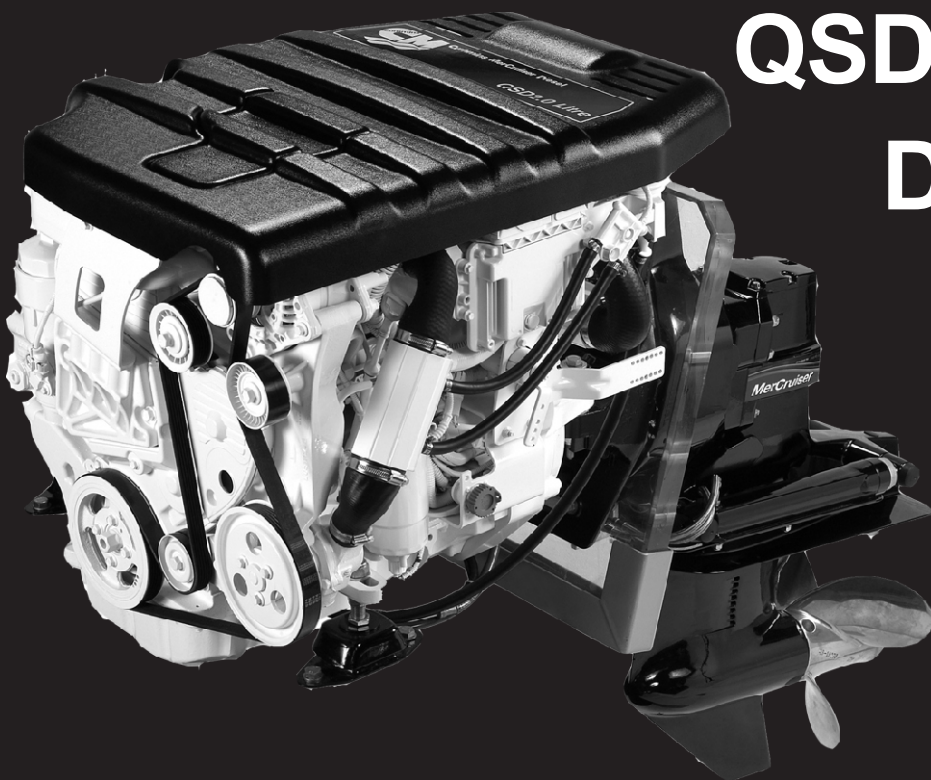




Service Manual #48

QSD 2.0 Liter Diesel Engines



Sterndrive Serial Numbers: 88201000 and Above

Inboard Serial Numbers: 88200000 and Above

Manual Outline

- 1 - Important Information**
 - A - General Information
 - B - Maintenance
 - C - Troubleshooting
- 2 - Removal And Installation**
 - A - Sterndrive Models
 - B - Inboard Models
- 3 - Engine Mechanical**
 - A - QSD 2.0 Engines
- 4 - Electrical System**
 - A - Starting System
 - B - Charging System
 - C - Instrumentation
 - D - Wiring Diagrams
- 5 - Fuel System**
 - A - Component Description
 - B - Fuel Filter Assembly
 - C - Common Rail and Fuel Lines
 - D - Fuel Injectors
 - E - High Pressure Fuel Pump
 - F - ECS Diagnostics
 - G - ECS Repair
- 6 - Cooling System**
 - A - Closed-Cooling System
- 7 - Intake and Exhaust System**
 - A - Intake Manifold and Aftercooler Assembly
 - B - Exhaust Manifold and Elbow
 - C - Turbocharger
- 8 - Drive System**
 - A - Technodrive Transmissions
 - B - Propeller Shaft Models
- 9 - Power-Assisted Steering System**
 - A - Power-Assisted Steering Pump and Related Components

Important Information

1

Removal And Installation

2

Engine Mechanical

3

Electrical System

4

Fuel System

5

Cooling System

6

Intake and Exhaust System

7

Drive System

8

Power-Assisted Steering System

9

Important Information

Section 1A - General Information

**1
A**

Table of Contents

Introduction.....	1A-2	Emissions Information.....	1A-4
How To Use This Manual.....	1A-2	Operation—Duty Cycle.....	1A-4
Engine Serial Number and Decal Locations		Duty Cycle Rating.....	1A-4
.....	1A-2	High Output Rating.....	1A-4
Identification.....	1A-2	Engine Break-In.....	1A-5
Serial Number Decal.....	1A-2	20-Hour Break-In Period.....	1A-5
Engine Data Plate Location.....	1A-3	After the 20-Hour Break-In Period.....	1A-5
Engine Data Plate.....	1A-3		

Introduction

This comprehensive overhaul and repair manual is designed as a service guide for the MerCruiser and Cummins MerCruiser Diesel models listed earlier. It provides specific information, including procedures for disassembly, inspection, assembly and adjustment, to enable dealers and service mechanics to repair these products. Before attempting repairs, read through the procedures to understand the methods and tools used and the cautions and warnings required for safety.

How To Use This Manual

This manual is divided into sections, which represent major components and systems. Some sections are further divided into parts that more fully describe the component. Refer to the **Service Manual Outline** following **Models Covered** in this manual for section titles.

Engine Serial Number and Decal Locations

Identification

The serial numbers are the manufacture's keys to numerous engineering details which apply to you Cummins MerCruiser Diesel power package. When contacting Cummins MerCruiser Diesel (CMD) about service, always specify model and serial numbers.

Serial Number Decal

The serial number decal is located on the engine and indicates the engine's CMD serial number, transom serial number, drive serial number, and the fill cap color codes for engine fluids.

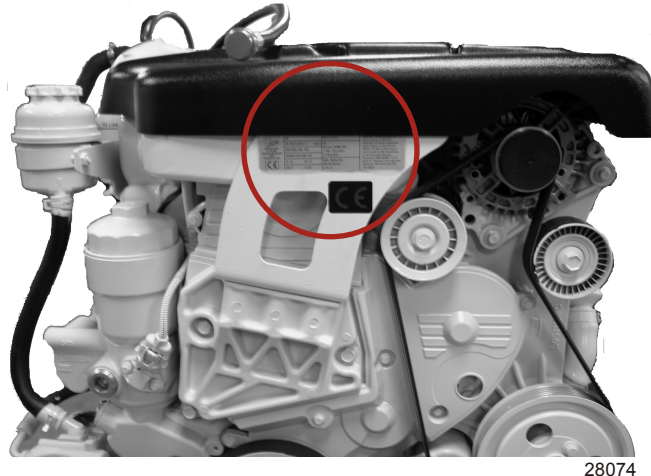


25986

Serial number decal

Engine Data Plate Location

The engine data plate is on the front of the engine. The data plate lists important identification and emissions certification information.



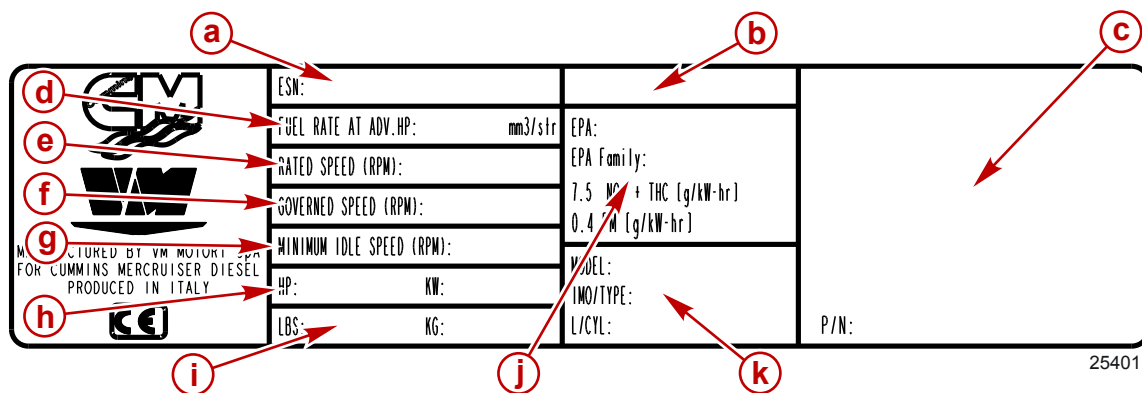
28074

Location of QSD 2.0 engine data plate

Engine Data Plate

A tamper-resistant engine data plate is affixed to the engine at the time of manufacture by Cummins MerCruiser Diesel. It contains important exhaust gas emissions information. Please note that the engine data plate will not affect the fit, function, or performance of the engine and neither boatbuilders nor dealers may remove the engine data plate or the engine component it is affixed to before sale. If modifications are necessary or the engine data plate is damaged contact Cummins MerCruiser Diesel about the availability of a replacement.

The owner or operator is not to modify the engine in any manner that would alter the horsepower or allow exhaust gas emission levels to exceed their predetermined factory specifications.



25401

Typical engine data plate

- a** - Engine serial number
- b** - Cummins MerCruiser Diesel model information
- c** - Emissions certification information
- d** - Fuel rate
- e** - Rated operation engine speed
- f** - Governed engine speed
- g** - Minimum idle speed
- h** - Engine power rating
- i** - Engine weight
- j** - Emissions data
- k** - Manufacturer model number, IMO type, liters per cylinder

**Thank you very much
for your reading.**

**Please click here and go
back to the website.**

**Then, you can
download the complete
manual instantly.**

No waiting.