



INDUSTRIAL EQUIPMENT

SERVICE MANUAL

Pallet Trucks

6HBW30

6HBE40

6HBC40



6HBE30

6HBC30

6TB50



Table of Contents

How to Use This Manual	1-1
Map of the Manual	1-2
Manual Design	1-3
START Page	1-5
Safety	2-1
Definitions	2-2
General Safety	2-3
Battery Safety	2-5
Jacking Safety	2-8
Fork Section	2-8
Tractor	2-8
Tie-down for Transport	2-9
Towing	2-10
Welding Safety	2-11
Systems Overview	3-1
Truck Model Identification	3-2
Vehicle Specifications	3-3
General System Data	3-4
Special Tools	3-6
Programmable Maintenance Tool	3-6
Theory of Operation	3-7
Lift/Lower	3-7
Directional/Speed Control	3-7
Strip Curtain Bypass (Models 6HBE30/40 only)	3-8
Manual Coast Mode (Standard on 6HBE30/40, Optional on 6HBW30)	3-8
Motor Controller	3-9
Scheduled Maintenance	4-1
Introduction	4-2
Maintenance Guidelines	4-2
General Truck Operation	4-2
Perform Daily or Every Eight (8) Operating Hours	4-3
Perform Every Two Months or 250 Operating Hours	4-4
Perform Annually or Every 1500 Operating Hours	4-5
Lubrication Points	4-6
Troubleshooting	5-1
How to Use This Chapter	5-2
Electrical Troubleshooting Guidelines	5-3
Checking for Shorts from Battery to Truck Frame	5-3
Checking for Shorts from Components to Truck Frame	5-4
Hydraulic Troubleshooting Guidelines	5-5
Definitions	5-6
Acceleration Rate	5-6
Brake Switch	5-6
Brake Rate	5-6
Continuity	5-6
Creep Speed	5-6
Current Limiting	5-6
Emergency Reverse	

(6HBW30 and 6HBE30/40)	5-6
Fault Codes	5-6
High Pedal Disable (HPD)	5-6
Operating Mode	5-7
Open Circuit	5-7
Overtemperature (Motor Controller)	5-7
Overvoltage Cutoff	5-7
Plugging (Plug Braking)	5-7
Pulse Width Modulation	5-7
Ramp Shape	5-7
Regenerative Braking	5-8
Sequencing Delay	5-8
Short Circuit or "Short"	5-8
Speed Limiting	5-8
Static Return To Off (SRO)	5-8
Throttle Map	5-8
Tractor	5-9
Undertemperature	5-9
Undervoltage Cutback	5-9
Electrical Connector Locator Chart	5-10
Fault Codes	5-11
Programmable Maintenance Tool	5-13
Program Mode	5-13
Monitor Mode	5-15
Faults Mode	5-16
Functions Mode	5-17
Information Mode	5-17
Programmer Mode	5-17
List of Troubleshooting Charts	5-19
Symptom Tables:	5-19
Troubleshooting Flowcharts	5-21
Symptom Tables: Lift/Lower System	5-25
Symptom Tables: Travel	5-28
Symptom Tables: Wiring System	5-35
Component Procedures	6-1
List of Component Procedures	6-2
Component Locators	6-5
Tractor Cover	6-7
Removal	6-7
Installation	6-7
Battery	6-8
Trucks Equipped with Battery Gates and Rollers (optional)	6-8
Trucks Without Battery Gates and Rollers	6-9
Battery Exterior Cleaning	6-9
Charging	6-10
Adding Water	6-11
Specific Gravity	6-11
Voltage Check	6-11
Maintenance-Free Batteries	6-12
Storage	6-12
Power Cables	6-13
Battery/Charger/Truck Connectors	6-13

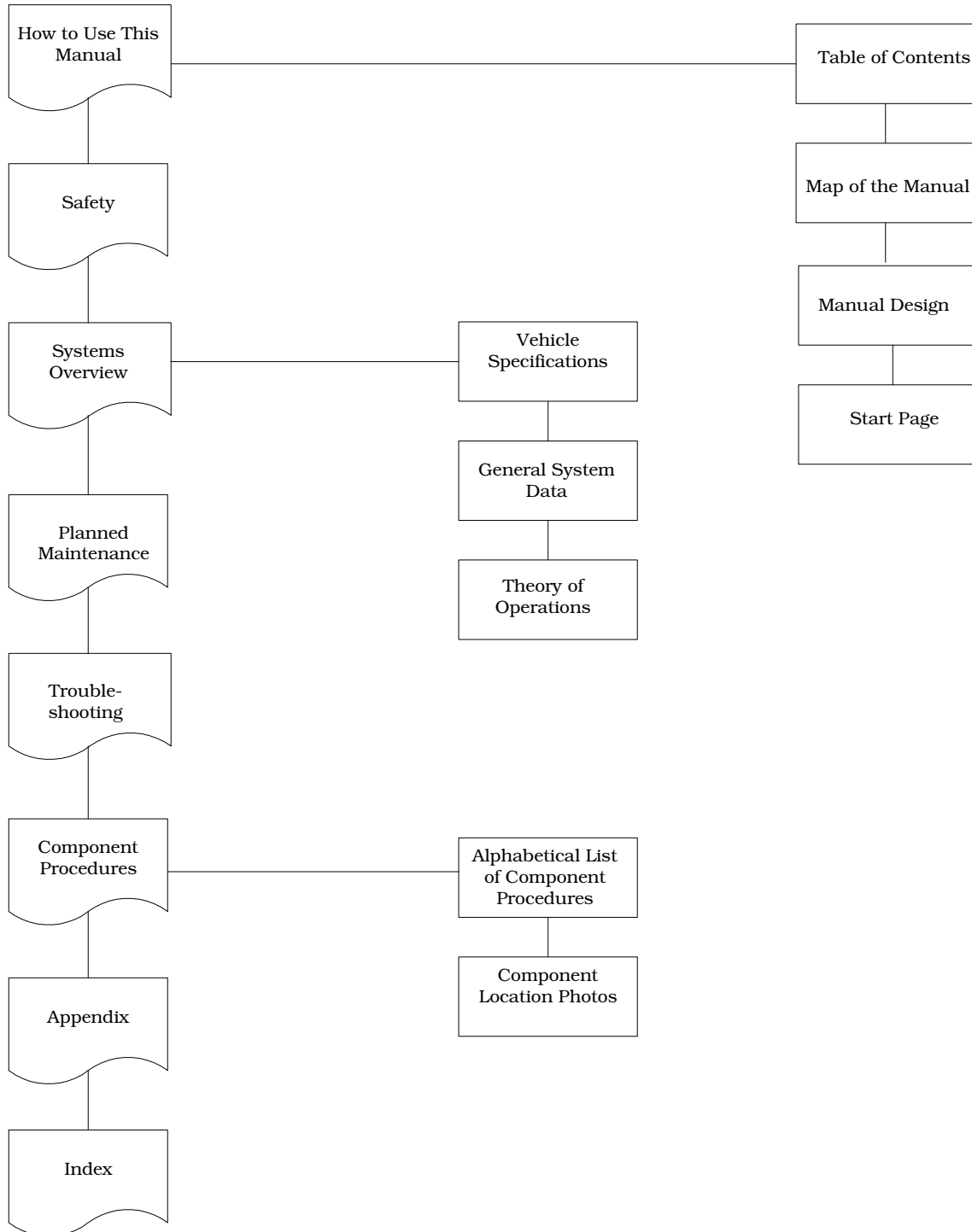
Wiring Harness	6-14
Terminology	6-14
Inspection	6-14
Fuses	6-15
Test/Inspection	6-15
Switches (General)	6-16
Test/Inspection	6-16
Key Switch	6-17
Inspection	6-17
Removal	6-17
Installation	6-17
Brake Switch	6-18
Adjustment	6-18
Removal	6-18
Installation	6-18
Lift Cut-Out Switch	6-20
Adjustment	6-20
Grab Rail Switches	6-21
Removal	6-21
Installation	6-21
Hydraulic Solenoids	6-22
Removal	6-22
Installation	6-22
Manual Coast	6-23
Removal	6-23
Installation	6-23
Gauges	6-24
Hour Meter	6-24
Combination Hour/Battery Discharge Meter	6-24
Control Handle	6-26
Return Spring Adjustment	
6HBW30, 6HBE30 and 6HBE40	6-26
Horn	6-27
Removal	6-27
Installation	6-27
Motor Controller	6-28
Cleaning	6-28
Removal	6-28
Installation	6-29
Programming	6-29
Emergency Reverse Check	6-29
Travel Potentiometer	6-29
Contactors	6-31
Tip Inspection	6-31
Main Contactor	6-31
Brake	6-35
Models 6HBW30, 6HBE30, and 6HBE40	6-35
Models 6HBC30, 6HBC40, and 6TB50	6-36
Motors, General	6-39
Motor Brushes	6-39
Motor Brush Spring Tension	6-40
Commutator	6-40

Terminal Nuts	6-43
Electric Motor Tests	6-43
Drive Motor	6-46
Removal	6-46
Installation	6-46
Drive Unit	6-49
Removal	6-49
Tooth Pattern of Drive Unit	6-53
Drive Unit Vent Plug	6-55
Drive Housing Lubrication	6-55
Drive Housing Steering Bearing	6-56
Drive Wheel	6-57
Casters	6-61
Removal	6-61
Disassembly	6-61
Assembly	6-62
Installation	6-62
Load Wheels	6-63
Replacement	6-63
Load Wheels	
Model 6TB50	6-64
Removal	6-64
Pallet Entry Sliders	6-65
Replacement	6-65
Fork Height Adjustment	6-66
6000 Lb. Models (Single Pallet)	6-66
Long-John Models (Double Pallet)	6-66
Hydraulic Components	6-69
General Guidelines	6-69
Hydraulic Fluid	6-70
Fluid Level	6-70
Changing Fluid	6-70
Adjusting Hydraulic Pump Relief Valve Pressure	6-72
Relief Valve Settings	6-72
Check Valve	6-73
Hydraulic Ram	6-74
Inspection	6-74
Removal	6-74
Installation	6-76
Hydraulic Cylinder Seals	6-77
Hydraulic Unit	6-80
Removal	6-80
Installation	6-80
Hydraulic Reservoir	6-81
Filter Screen and Suction Tube	6-81
Hydraulic Pump	6-82
Lift Motor	6-84
General Data	6-84
Cold Storage Conditioning	6-86
Appendix	A-1
Lubrication Equivalency Chart	A-2
Torque Chart - Standard (Ferrous)	A-3

Torque Chart - Metric	A-4
Decimal Equivalent Chart	A-5
Standard/Metric Conversions	A-7
Electrical Schematics	A-9
Index	I-1

Section 1. How to Use This Manual

Map of the Manual



Manual Design

Manual Design

The Toyota Pallet Truck Service Manual is designed with the following objectives in mind:

- Provide technical coverage for expected levels of user expertise
- Anticipate your needs and reduce your decisions regarding maintenance
- Reduce page flipping through a “one-stop shopping” approach

The two-line running page header at the top of each page tells you:

- Name of the manual
(Toyota Pallet Truck Service Manual)
- Current Chapter Title
(for example, this page *How to Use This Manual*)
- Current topic
(for example, this page *Manual Design*)

It is recommended that you go to the START page for guidance to the correct chapter.

- **How to Use This Manual** explains the manual format and design and contains the Table of Contents and START page.
- **Safety** explains warning and caution notes, general safety rules and safety rules for batteries, static, jacking, and welding.
- **Systems Overview** includes truck specifications and theory of operation information.
- **Planned Maintenance** outlines the recommended schedule of preventive services to keep your truck working most efficiently.
- **Troubleshooting** is a set of “decision-tree” charts and tables designed to take you from a symptom to a specific sequence of tests in order to isolate a failing component.
 - Chart “TS1: START TROUBLESHOOTING” on page 5-22 will guide you to the individual troubleshooting symptom chart you need.

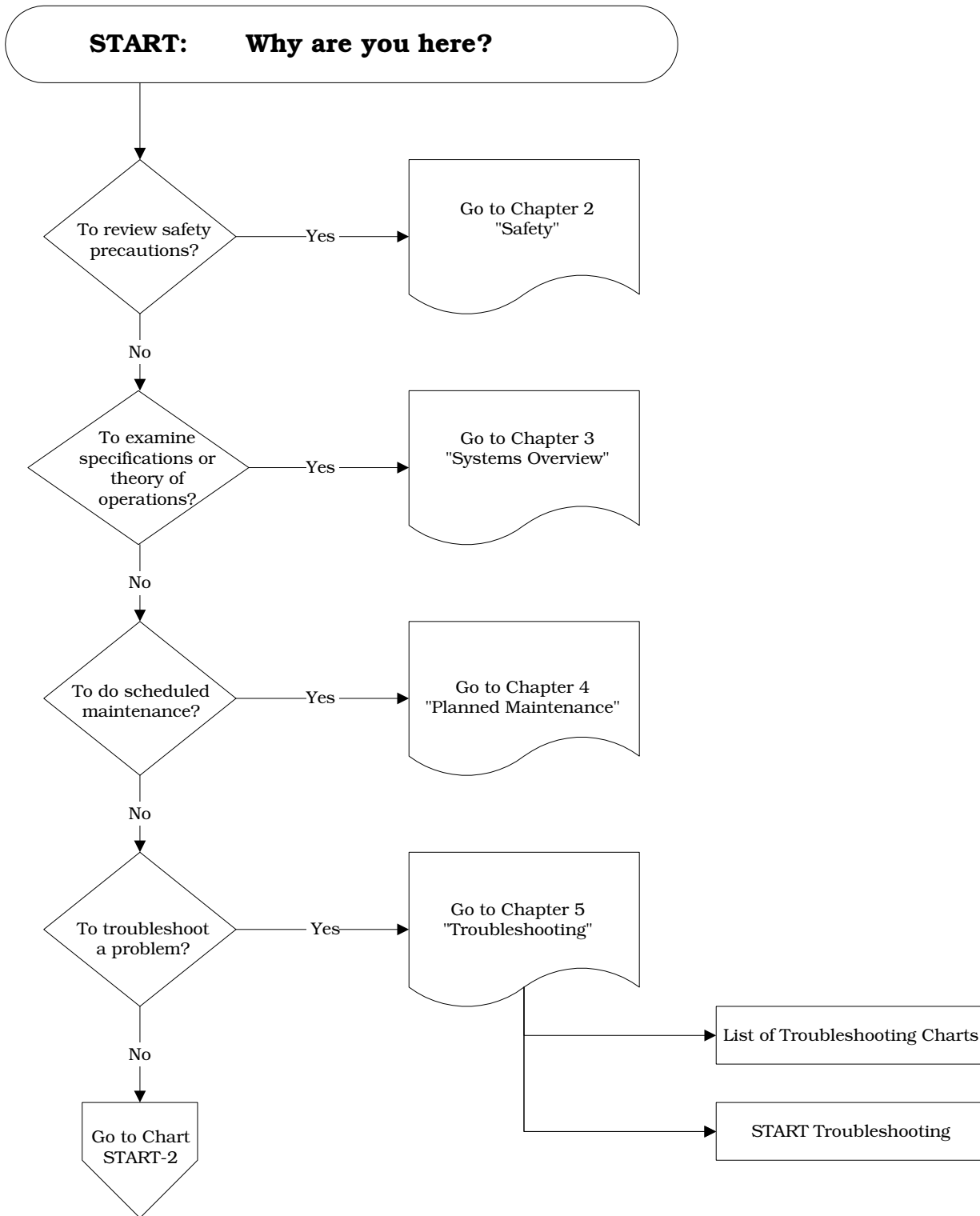
- When you’re familiar with the symptoms listed, you may instead simply find the symptom chart. See “List of Troubleshooting Charts” on page 5-19.
- When you complete a troubleshooting procedure, be sure to follow the steps in chart “**END1: End of Troubleshooting Procedure**” on page 5-24.
- **Component Procedures** gives step-by-step procedures for testing, removal, installation, and adjustment of individual truck components. Components are listed in an order which considers:
 - Frequency of attention
 - Physical attachment (for example, brake must be removed before drive motor)
 - Functional relation (for example, drive motor and drive unit components are grouped together)

To find a component procedure, you may use one of three methods:

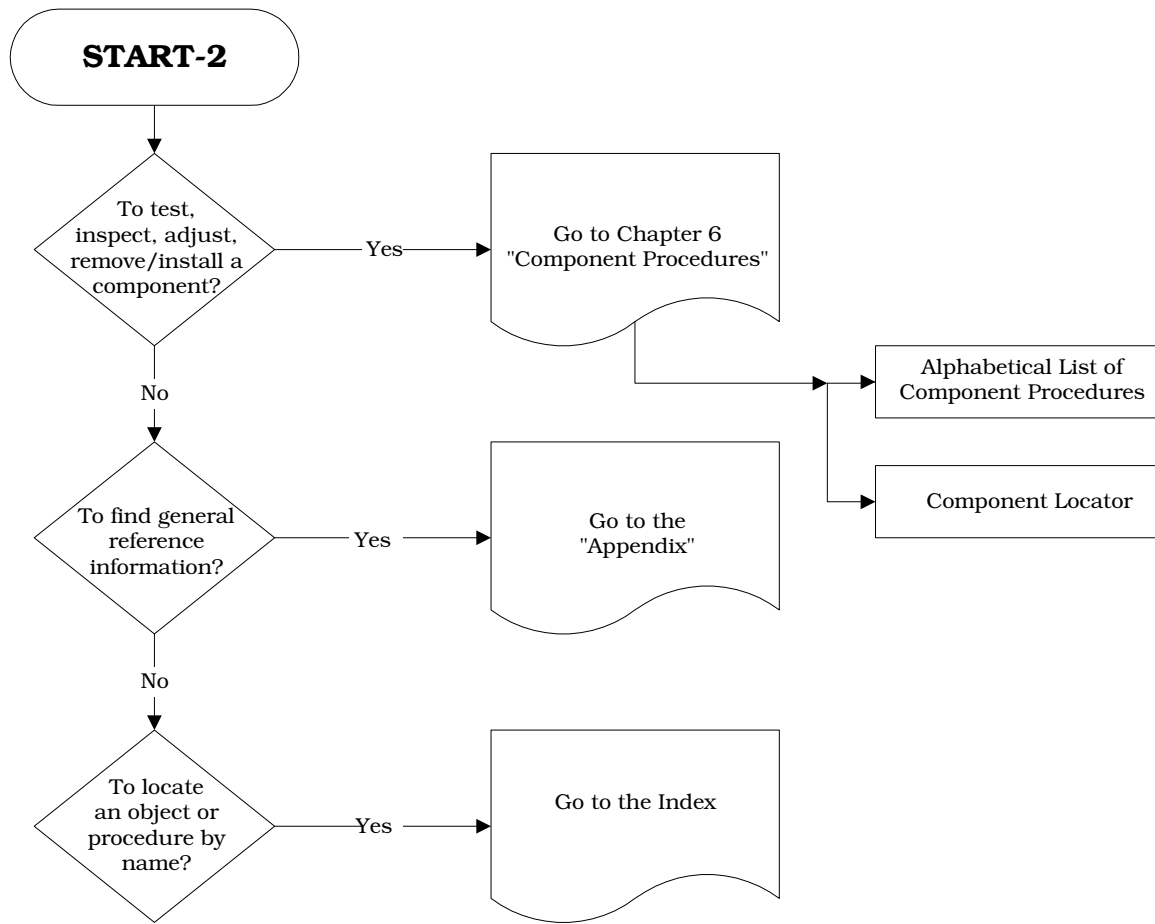
- Look up the component name in the “**List of Component Procedures**” on page 6-2.
- Find the component in the “**Component Locators**” on page 6-5.
- Look up the component name in the maintenance manual Index.
- **Appendix** contains reference information such as torque values, lubricants and schematics.
- **Index** lists subjects alphabetically.

START Page

START Page



START Page



Section 2. Safety

Definitions

Throughout this manual, you will see two kinds of safety reminders:

WARNING

Warning means a potentially hazardous situation exists that, if not avoided, could result in death or serious injury.

CAUTION

Caution means a potentially hazardous situation exists that, if not avoided, could result in minor or moderate injury or in damage to the truck or nearby objects.

General Safety

General Safety

Do *not* operate or work on this truck unless you are trained, qualified and authorized to do so.

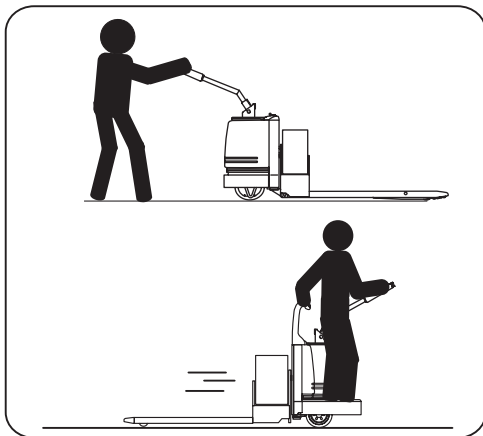


Know the truck's controls and what they do.

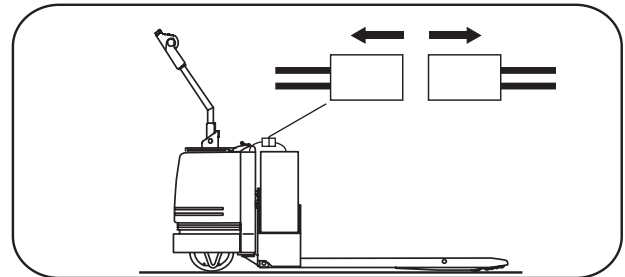
Do *not* operate this truck if it needs repair or if it is in any way unsafe.



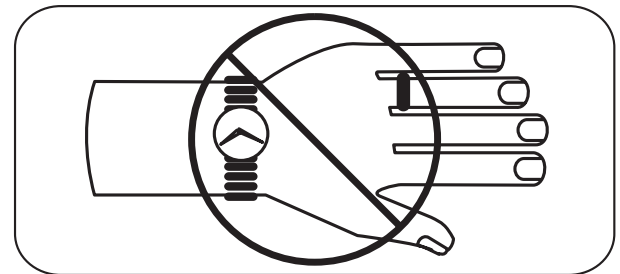
Operate this truck only from the operator's position.



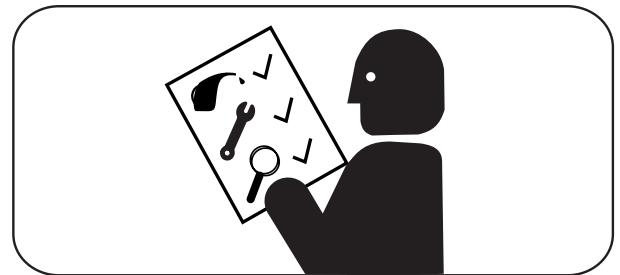
Before working on this truck, always turn the key switch to OFF and disconnect the truck's battery connector (unless this manual tells you otherwise).



Do *not* wear watches, rings, or jewelry when working on this truck.



Follow the scheduled lubrication, maintenance and inspection steps.



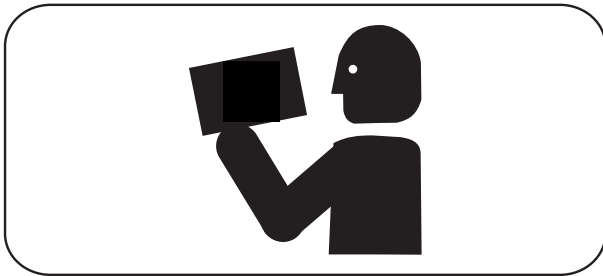
**Thank you very much
for your reading.**

**Please click here and go
back to the website.**

**Then, you can
download the complete
manual instantly.**

No waiting.

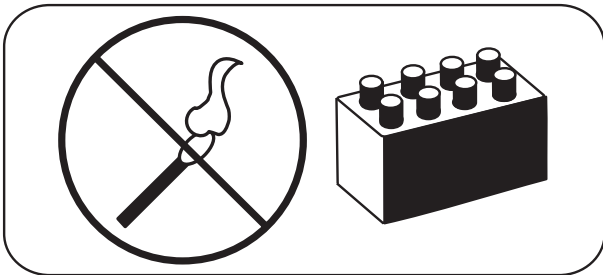
Follow exactly the safety and repair instructions in this manual. Do *not* take “shortcuts.”



Always park this truck indoors.



Do *not* use an open flame near the truck.



Do *not* wash this truck with a hose.

Do *not* add to or modify this truck until you contact your local Toyota Dealer to receive written manufacturer approval.

Do *not* use gasoline or other flammable liquids for cleaning parts.

Clean up any hydraulic fluid, oil or grease that has leaked or spilled on the floor.



Battery Safety

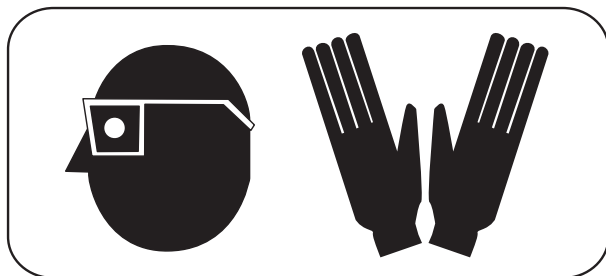
Battery Safety**⚠ WARNING**

As a battery is being charged, an explosive gas mixture forms within and around each cell. If the area is not properly ventilated, this explosive gas can remain in or around the battery for several hours after charging. Be sure there are no open flames or sparks in the charging area. An open flame or spark can ignite this gas, resulting in serious damage or injury.

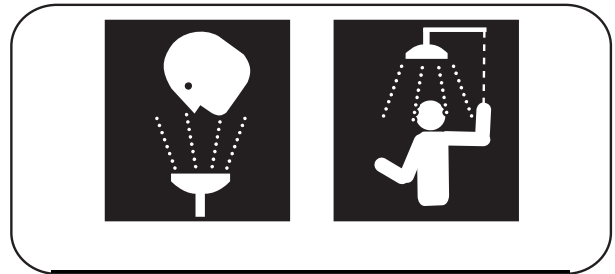
⚠ WARNING

Battery electrolyte is a solution of sulfuric acid and water. Battery acid causes burns. If any electrolyte comes in contact with your clothing or skin, flush the area immediately with cold water. If the solution gets on your face or in your eyes, flush the area with cold water and get medical help immediately.

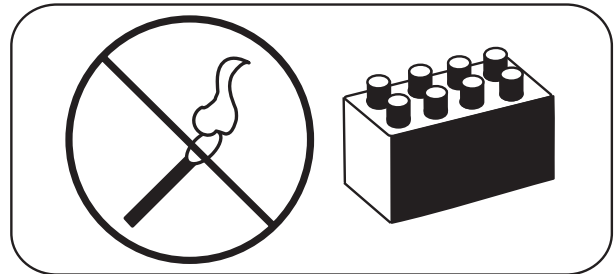
Wear personal protective equipment to protect eyes, face and skin when checking, handling or filling batteries. This equipment includes goggles or face shield, rubber gloves (with or without arm shields) and a rubber apron.



Make sure a shower and eyewash station are nearby in case there is an accident.



A battery gives off explosive gases. *Never* smoke, use an open flame, or use anything that gives off sparks near a battery.



Keep the charging area well-ventilated to avoid hydrogen gas concentration.

