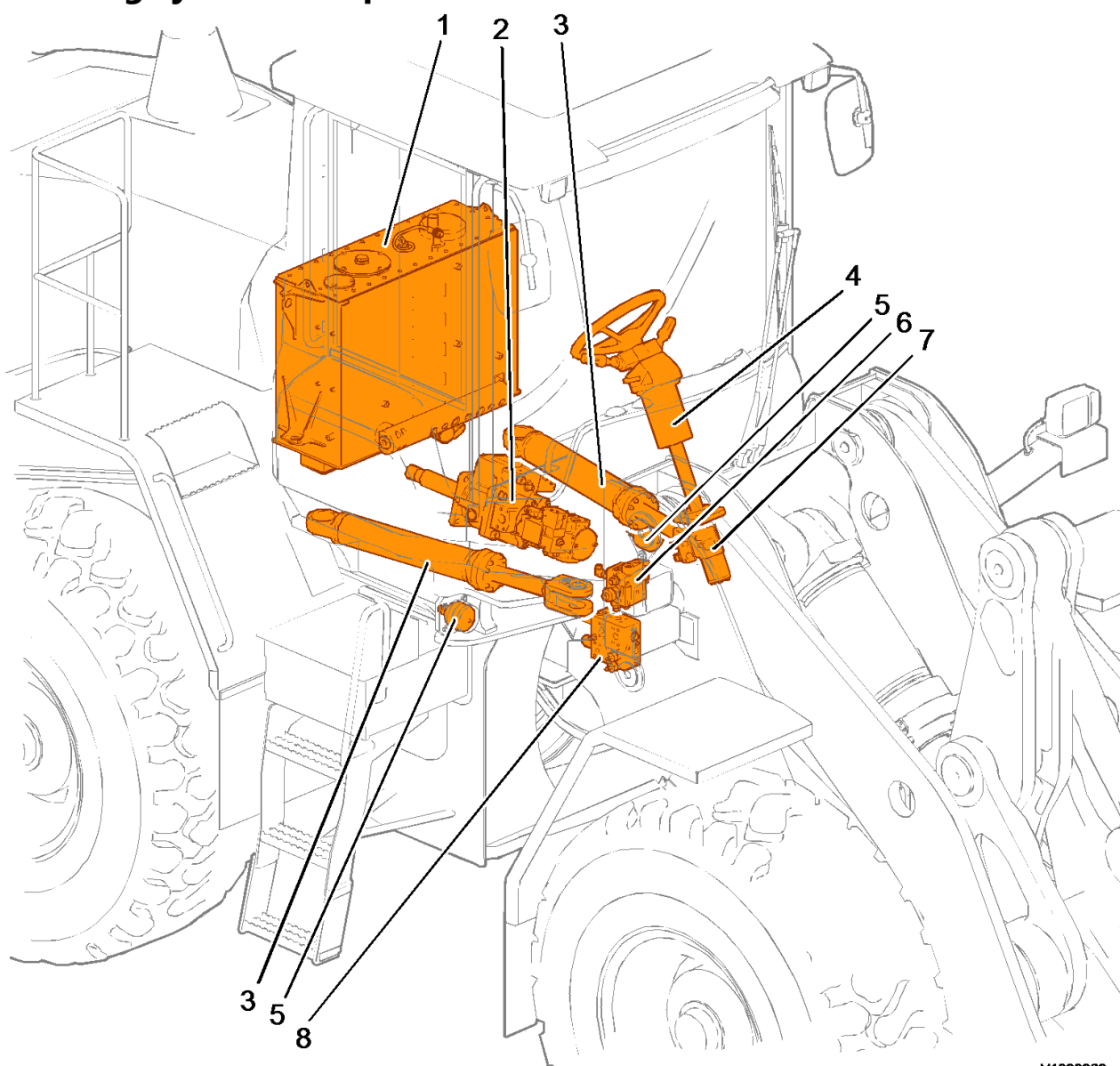


Document Title: Steering system, component location	Function Group: 600	Information Type: Service Information	Date: 2014/5/5 0
Profile: WLO, L120G [GB]			

Steering system, component location



V1090969

Figure 1

1. Hydraulic oil tank
2. Hydraulic oil pumps P2 and P3
3. Steering cylinder (2 pcs.)
4. Steering wheel
5. Accumulator (2 pcs.)
6. Shift valve

7. Steering valve
8. Central block

For description of components, see:

- [911 Hydraulic oil tank, description](#)
- [913 Hydraulic pumps, description](#)
- [645 Shift valve, description](#)
- [645 Steering valve, description](#)
- [912 Central valve, description](#)

Document Title: Steering system, checking and adjusting working pressure	Function Group: 645	Information Type: Service Information	Date: 2014/5/5 0
Profile: WLO, L120G [GB]			

Steering system, checking and adjusting working pressure

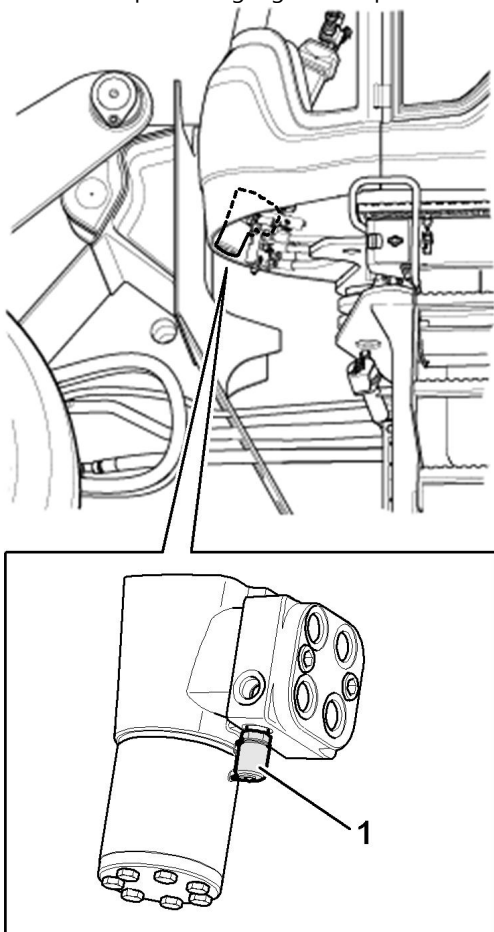
Op nbr 645-028

[88830055 Pressure checking set](#)

1. Warm up the machine until the hydraulic system is at operating temperature, approx. 60–80 °C (140–176 °F).

Check the stand-by pressure

2. Turn off the engine.
3. Connect the sensor for 600 bar (60 MPa/8700 psi) to the gauge.
4. Connect the pressure gauge to the pressure check connection on the steering valve.



V1092752

Figure 1

pressure check connection on steering valve

5. Start the engine.
6. Release the parking brake.
7. Turn the steering wheel until the machine reaches full lock (end-position).
8. Read off the stand-by pressure and check the value in [645 Steering specifications](#).

Check max. steering pressure

9. Turn the steering wheel to right full lock and hold it there. Read off the pressure gauge.
10. Check the value in [645 Steering specifications](#).
11. If the value is not correct, turn the steering wheel to left full lock to exclude a problem with the shock valve.
12. Turn off the engine.

Adjusting steering pressure

13. Adjust the steering pressure on the pressure limiting valve on the central block.
Turn the screw 30 degrees clockwise to increase the pressure approx. 10 bar (1 MPa/145 psi)

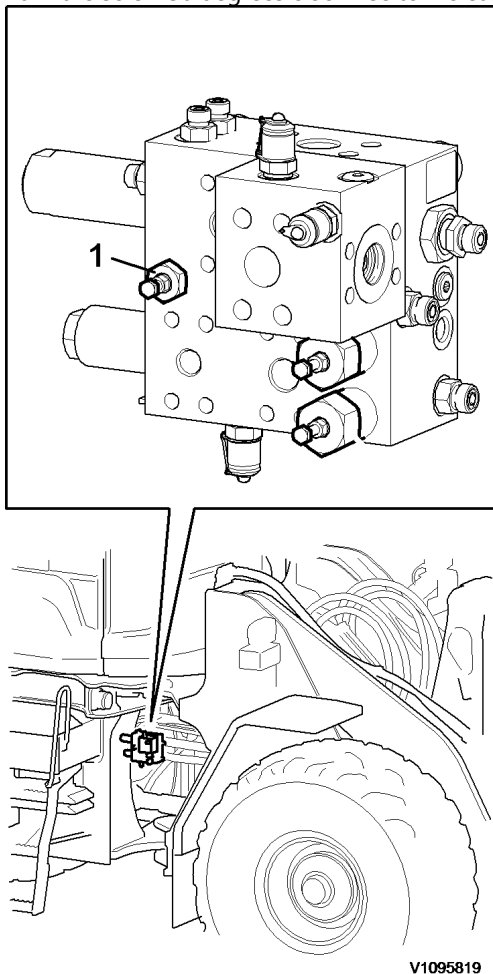


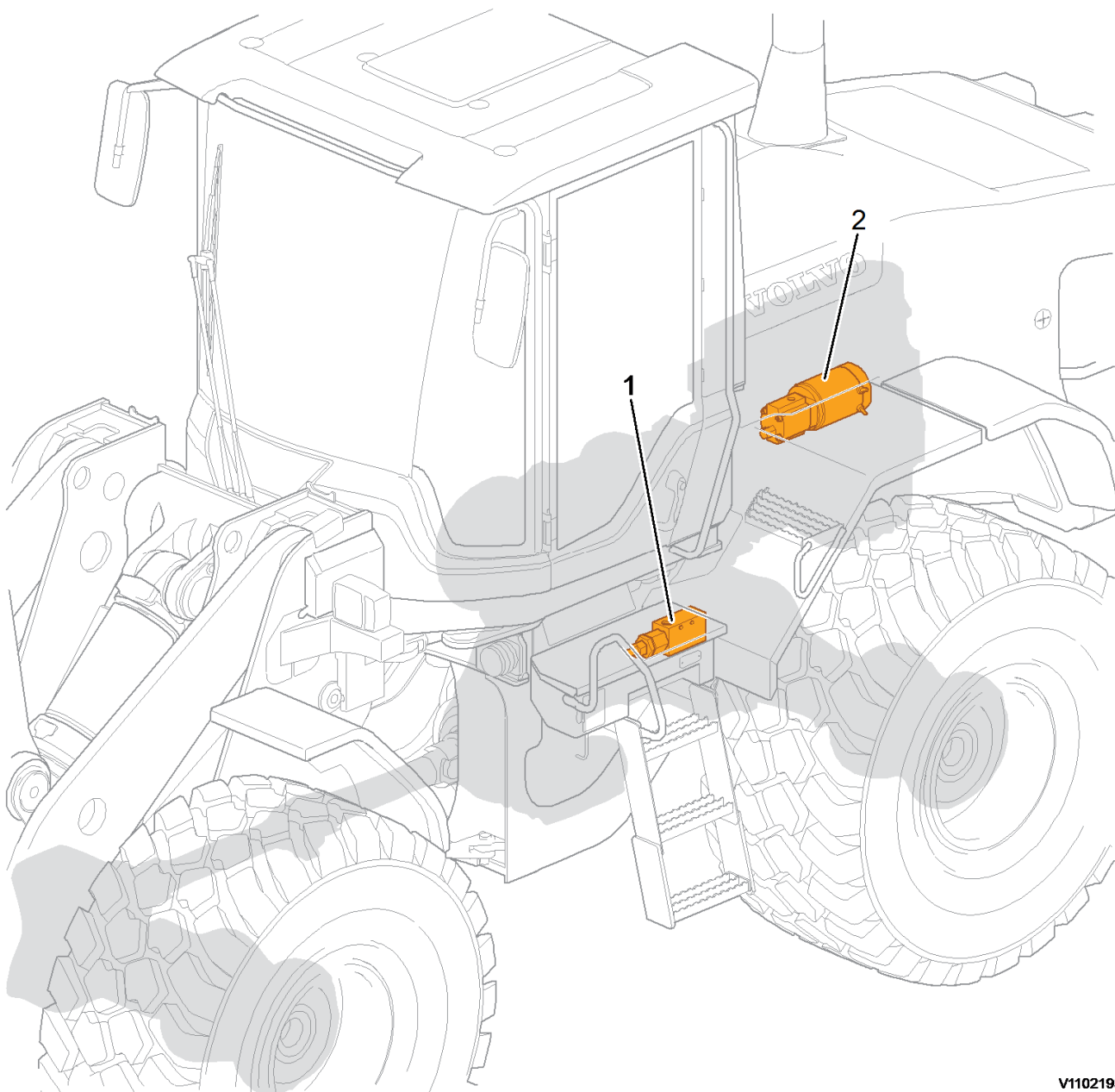
Figure 2

1. Pressure limiting valve for steering pressure on central block
14. Compare the value with [645 Steering specifications](#) again.

15. Turn off the engine and remove the pressure gauge.
16. Restore the machine.
17. Check the function of the steering system according to [600 Steering system, function check](#).

Document Title: Secondary steering, component location	Function Group: 647	Information Type: Service Information	Date: 2014/5/5 0
Profile: WLO, L120G [GB]			

Secondary steering, component location



V1102195

Figure 1

1. Pressure monitor
2. Secondary steering pump

For description of components, see:

- [647 Pressure monitor, description](#)
- [647 Secondary steering, description](#)

Document Title: Comfort drive control (CDC), angle sensor, changing	Function Group: 660	Information Type: Service Information	Date: 2014/5/5 0
Profile: WLO, L120G [GB]			

Comfort drive control (CDC), angle sensor, changing

Op nbr 660-006

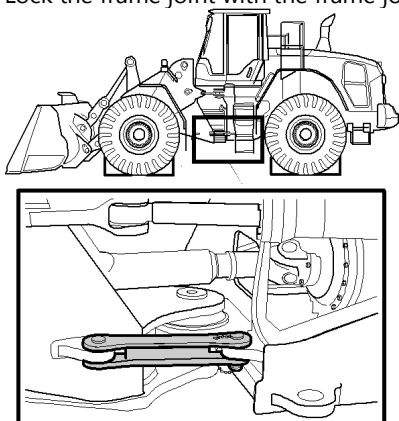
[VCADS Pro VCADS Pro Service Tool](#)

NOTE!

If the angle sensor has been removed, loosened or in any way been disturbed from its position, the function must be calibrated even if the angle sensor is not replaced.

Removing

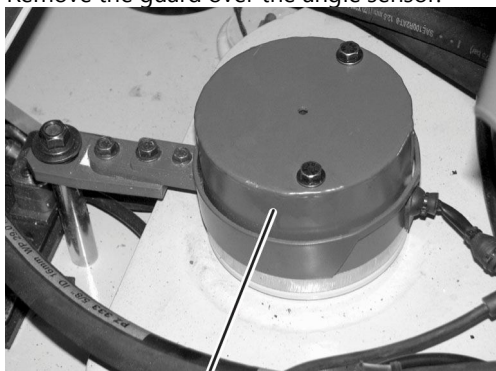
1. Lock the frame joint with the frame joint lock. Place blocks in front of and behind the wheels.



V1099640

Figure 1

2. Remove the floor mat and the front floor plate.
3. Remove the guard over the angle sensor.

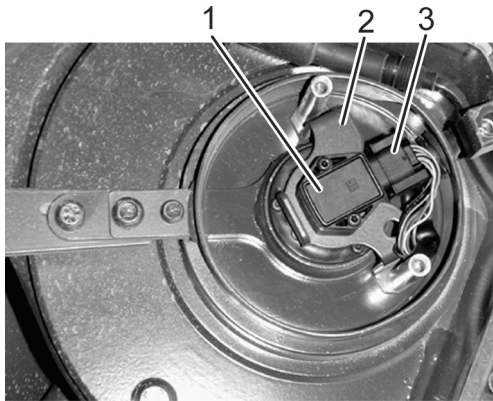


V1047584

Figure 2

Angle transmitter Comfort Drive Control (lever steering)

1. Guard
4. Part the connector by the angle sensor.



V1047860

Figure 3

1. Angle sensor
 2. Angle sensor bracket
 3. Connector
5. Remove the bolts retaining the angle sensor.
 6. Remove the bolts retaining angle sensor bracket. Pull away the bracket.
 7. Remove the bolts retaining the driver and remove the angle transmitter together with the driver.
 8. Remove the cotter pin and the angle sensor.

NOTE!

Check that the driver is intact and that the angle sensor stud cannot move in the driver.

Installation

9. Install the new angle transmitter on the driver and secure it with the cotter pin.
10. Install the driver together with the angle transmitter and install the bolts retaining the driver.
11. Install the bolts retaining the angle sensor bracket.
12. Install the angle sensor in its bracket.
13. Assemble the connector.
14. Install the guard over the angle sensor.
15. Install the front floor plate.
16. Put the mat back.
17. Restore the machine.
18. Calibrate the Comfort Drive Control (lever steering) using VCADS Pro according to Op. No. 64187-3.
19. Test-run the machine. Check that there are no error codes. Test the function of the Comfort Drive Control according to [660 Lever steering \(CDC\), functional check](#).

Document Title: Comfort Drive Control, servo pressure, checking	Function Group: 660	Information Type: Service Information	Date: 2014/5/5 0
Profile: WLO, L120G [GB]			

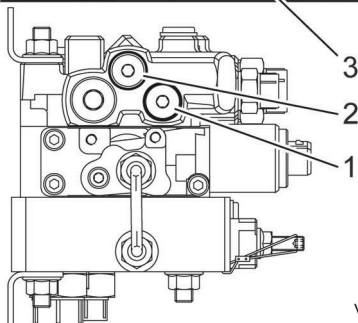
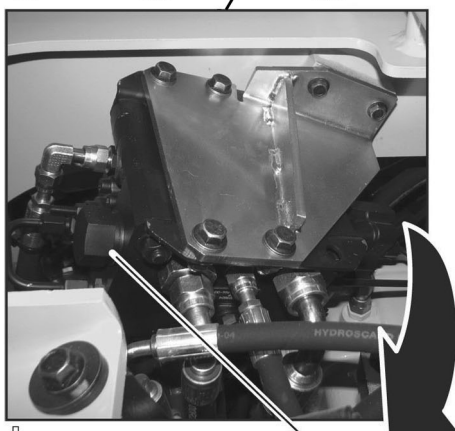
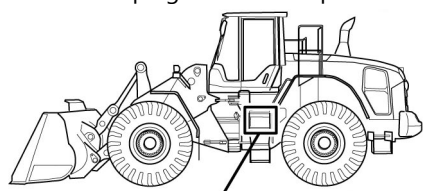
Comfort Drive Control, servo pressure, checking

Op nbr 660-012

[936446 Testing nipple](#)

[88830055 Pressure checking set](#)

1. Block the wheels. Lock the frame joint with the frame joint lock.
2. Remove the plate on the left side of the machine under the cab.
3. Remove the plug from the PS-port on the control valve for CDC, and install 936446 Testing nipple.



V1106757

Figure 1

1. PS-port
2. Strainer
3. Pressure limiter, internal servo pressure

NOTE!

Cannot be adjusted.

4. Connect 11666052 Pressure gauge and 14290266 Hose.

5.

Start the engine and activate Comfort Drive Control.

Steer against end-position and check that the pressure is correct according to [660 Control valve, lever steering \(CDC\), specifications](#).

Note that the pressure is not adjustable.

If the pressure is too low, check that the pressure limiter and strainer are not clogged or defective.

6. Remove the measuring equipment. Reinstall the plug in the PS-port.

7. Install the plate under the cab.

8. Restore the machine.

Thank you so much for reading.
Please click the “Buy Now!”
button below to download the
complete manual.



After you pay.

You can download the most
perfect and complete manual in
the world immediately.

Our support email:

ebooklibonline@outlook.com