

Document Title: Frame and track unit, description	Function Group: 700	Information Type: Service Information	Date: 2014/7/31
Profile: EXC, EC380D NL [GB]			

Frame and track unit, description

Upper frame type

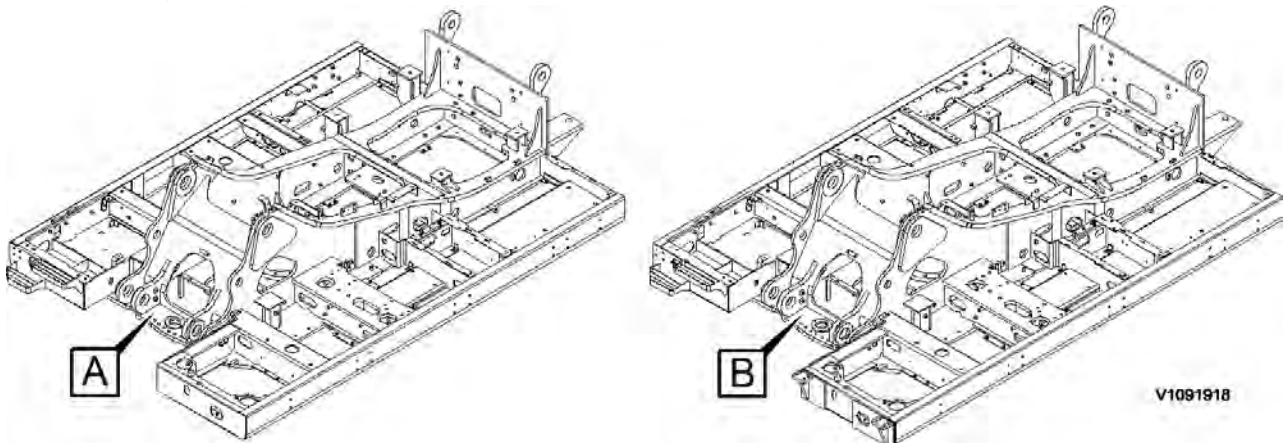


Figure 1

Upper frame

- A. Rops with fixed counter weight type, weight: 3231 kg (7123 lbs)
- B. Rops With FOG and fixed counter weight type, weight: 3259 kg (7185 lbs)

Lower frame type

NOTE!

See [7181 Undercarriage, description](#).

Document Title: Superstructure, removing	Function Group: 710	Information Type: Service Information	Date: 2014/7/31
Profile: EXC, EC380D NL [GB]			

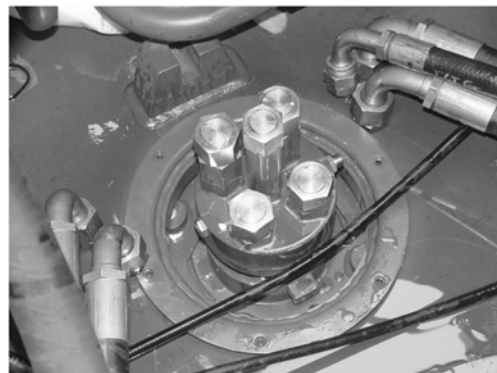
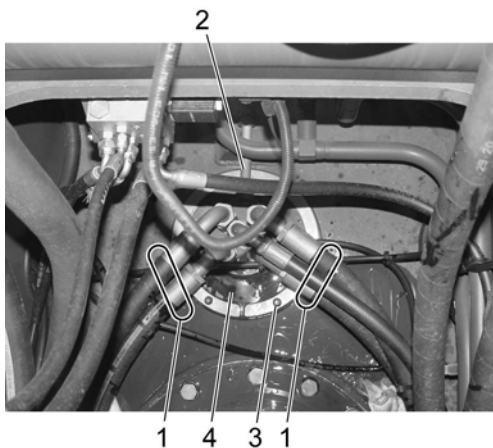
Superstructure, removing

Op nbr 710-001

1. Park the machine in the service position D. See [091 Service positions](#).
Position the machine on flat, firm and level ground, free from any obstructions or interference.
When the engine is running, the hydraulic line is under high pressure. Stop the engine, and remove the residual pressure inside the hydraulic line by operating the control lever smoothly 3-4 times with the ignition key at "ON" position. Turn the ignition key to "OFF" position.
2. Remove the hydraulic oil hoses, stopper screw, seal cover fixing screws, clamp and seal covers from center passage.

NOTICE

When a hose has been disconnected, plug both the hose and the connection immediately. The hoses should be marked for correct connection.



V1096385

Figure 1
Removal, hydraulic hoses

1. Hydraulic oil hoses
 2. Stopper screw
 3. Seal cover fixing screw
 4. Seal cover
3. Remove the two lifting points covers from the top of counterweight. See [716 Counterweight, removing](#).

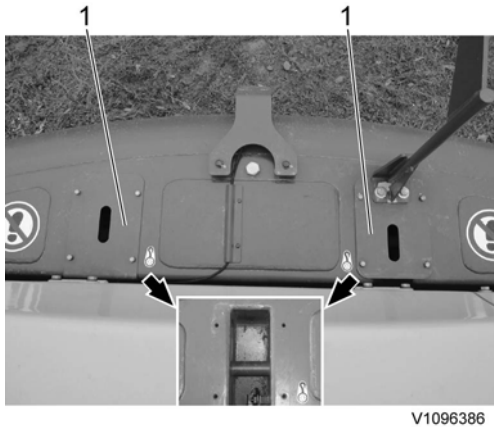


Figure 2
Removal, lifting points covers (1)

4. **⚠ WARNING**
 Risk of personal injury. Very heavy object.

⚠ WARNING
 The parts are heavy. Take appropriate safety cautions when handling them.

⚠ WARNING
 Never lift the machine with a person in the cab.

⚠ WARNING
 Always use classified cables, lifting straps, shackles and hooks with sufficient lifting capacity.

Hold the superstructure with wire ropes (cables).

Check the superstructure weight. See [710 Machine weight specifications](#).

Check the wire ropes length (cables). Refer to the operators manual for further operation or cab in lifting machine decal. See [Operating instructions, Transporting machine, Lifting machine](#).

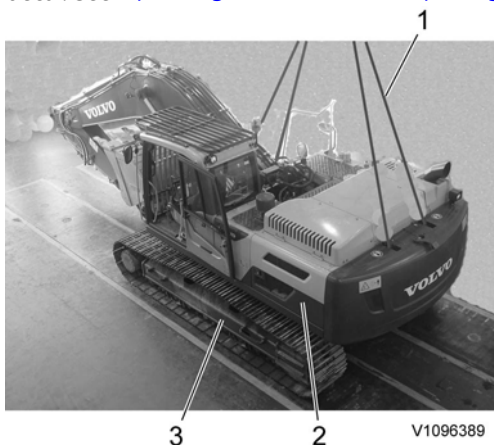
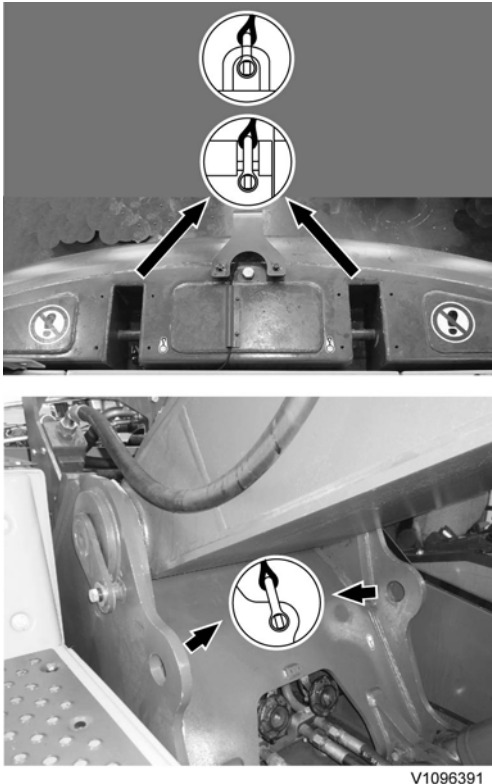


Figure 3
Lifting superstructure

1. Wire rope (cable)
2. Superstructure
3. Undercarriage



V1096391

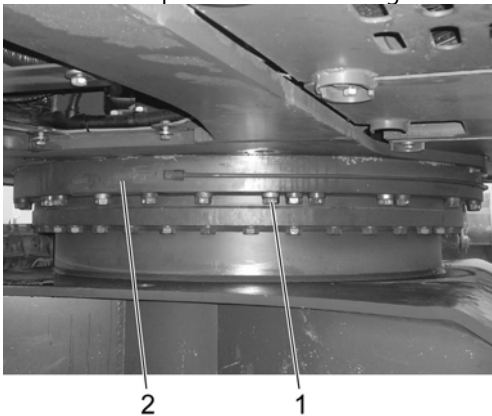
Figure 4
Lifting points

NOTE!

As shown in the decal for lifting, connect lifting wire ropes (cables) or slings with sufficient strength for the machine weight at the lifting points correctly.

After installation of all hoisting equipment, lift the machine a little to check its balance, if satisfactory, lift it slowly and evenly.

5. Remove the superstructure mounting screws from the swing ring gear.



V1096387

Figure 5
Removal, superstructure mounting screws

1. Superstructure mounting screw
2. Swing ring gear

! WARNING

6. **The superstructure is heavy. Pay attention to safe footing and the area around the crane before proceeding to remove or install the superstructure.**

Remove the superstructure slowly and lower onto the 4 jacks safely.
Maintain good visibility of the machine at all times during the lift. And continuously check that the machine is level.



Figure 6
Removal, lifting superstructure (1)

Document Title: Superstructure, installing	Function Group: 710	Information Type: Service Information	Date: 2014/7/31
Profile: EXC, EC380D NL [GB]			

Superstructure, installing

Op nbr 710-002

- ! WARNING**
Risk of personal injury. Very heavy object.

! WARNING
The parts are heavy. Take appropriate safety cautions when handling them.

! WARNING
Never lift the machine with a person in the cab.

! WARNING
Always use classified cables, lifting straps, shackles and hooks with sufficient lifting capacity.

Hold the superstructure with wire ropes (cables).

Check the superstructure weight. See [710 Machine weight specifications](#).

Wire ropes length (cables). Refer to the operators manual for further operation or cab in lifting machine decal. See [Operating instructions, Transporting machine, Lifting machine](#).

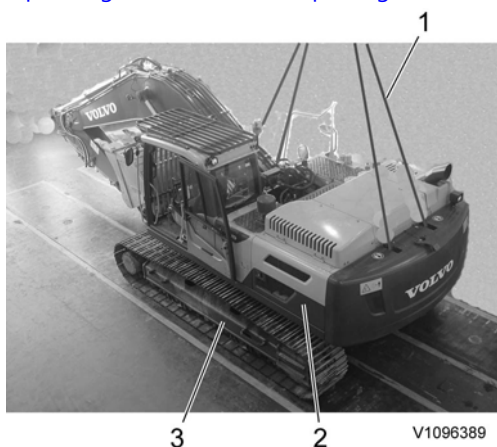
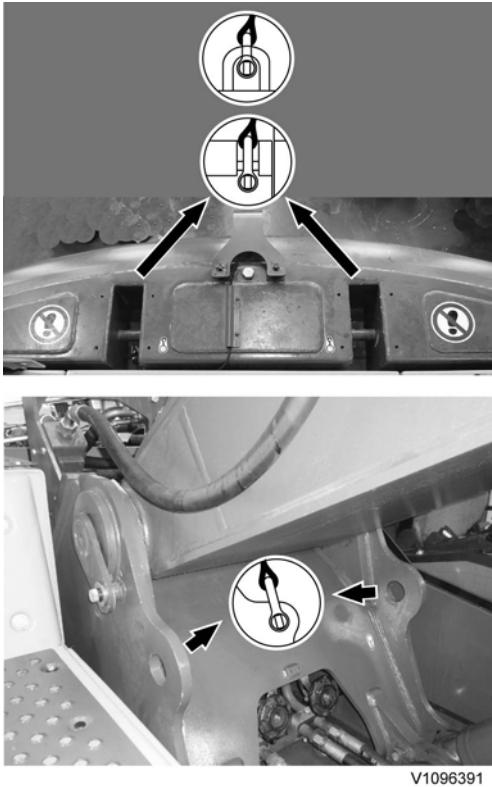


Figure 1
Lifting superstructure

1. Wire rope (cable)
2. Superstructure
3. Undercarriage



V1096391

Figure 2
Lifting points

NOTE!

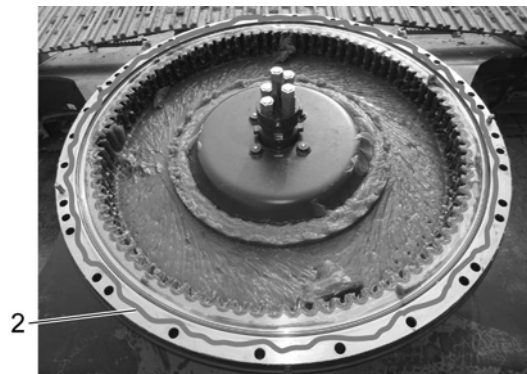
As shown in the decal for lifting, connect lifting wire ropes (cables) or slings with sufficient strength for the machine weight at the lifting points correctly.

After installation of all hoisting equipment, lift the machine a little to check its balance, if satisfactory, lift it slowly and evenly.

2. Thoroughly clean the mounting surface.
Before replacing the superstructure, apply sealing compound to the mounting surface.

NOTE!

If impurities remain, adhesion with bond agent is not good.



V1096393

Figure 3
Clean the mounting surface

1. Clean the mounting surface
2. Sealing compound

3.  **WARNING**

The superstructure is heavy. Pay attention to safe footing and the area around the crane before proceeding to remove or install the superstructure.

Lift the superstructure and install it to the swing ring gear.

Maintain good visibility of the machine at all times during the lift. And continuously check that the machine is level.

NOTE!

Match the "S" mark (soft zone position) on inner race and the plug on outer race.

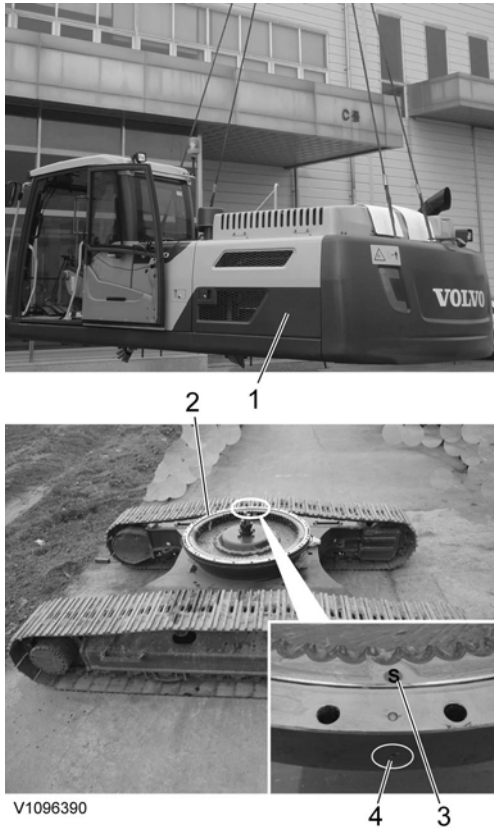


Figure 4
Installation, superstructure

1. Superstructure
2. Swing ring gear
3. "S" mark inner race (soft zone position)
4. Plug outer race

4. Install the superstructure mounting screws from the swing ring gear. Tightening torque. See [492 Swing ring gear, description](#). Apply Loctite #277 or equivalent locking fluid.

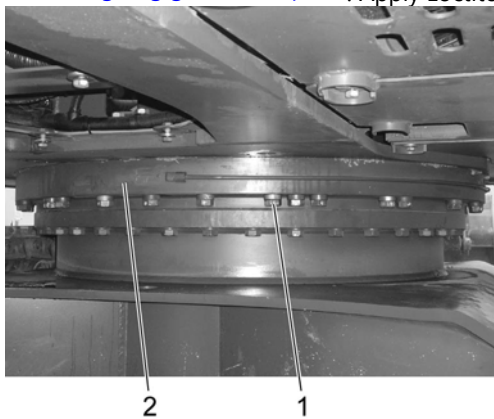


Figure 5
Installation, superstructure mounting screws

Thank you very much for reading.

This is part of the demo page.

GET MORE:

Hydraulic

System, Setting

Instructions, Functional

Description, Electrical

System And more.....

Click Here BUY NOW

Then Instant Download

the Complete Manual.