

450 and 780 Hydra-Push Manure Spreaders



JOHN DEERE

TECHNICAL MANUAL 450 and 780 Hydra-Push Manure Spreaders

TM1318 (01JUN87) English

TM1318 (01JUN87)

LITHO IN U.S.A. (REVISED)
ENGLISH



450 AND 780 HYDRA-PUSH™ MANURE SPREADERS TECHNICAL MANUAL TM-1318 (JUNE-87)

SECTION AND GROUP CONTENTS

SECTION 10—GENERAL INFORMATION

- Group 05—Introduction And Safety
- Group 10—General Specifications
- Group 15—Lubricants
- Group 20—Serial Numbers

SECTION 20—BEATER DRIVE

- Group 05—General Information
- Group 10—Operational Checks
- Group 15—Driveline Repair
- Group 20—Clutch Repair
- Group 25—Input Shaft Repair
- Group 30—Drive Sprockets and Chain Repair
- Group 35—Beater Side Shaft Repair
- Group 40—Gear Case Repair
- Group 45—Main Beater Repair
- Group 50—Upper Beater Repair

SECTION 30—HYDRAULICS

- Group 05—General Information
- Group 10—Testing
- Group 15—Secondary Cylinder Repair
- Group 20—Primary Cylinder Repair
- Group 25—Endgate Cylinder Repair
- Group 30—Closed-Center Hydraulic Control Valve
Repair
- Group 35—Open-Center Hydraulic Control Valve
Repair

SECTION 40—MISCELLANEOUS

- Group 05—Wooden Guides and Wiper Seals Repair
- Group 10—Wheels and Axle Repair
- Group 15—Moving Panel Repair
- Group 20—Sliding Floor Repair
- Group 25—Endgate Repair
- Group 30—FRP Panel Repair

All information, illustrations and specifications contained in this technical manual are based on the latest information available at the time of publication. The right is reserved to make changes at any time without notice.

COPYRIGHT® 1987
DEERE & COMPANY
Moline, Illinois
All rights reserved
A JOHN DEERE ILLUSTRATION

W02;0000 -A 090687

Section 10 GENERAL INFORMATION

CONTENTS

	Page
GROUP 05—Introduction And Safety	
Introduction	10-05-2
Safety	10-05-3
GROUP 10—General Specifications	
Dimensions	
450 Spreader	10-10-1
780 Spreader	10-10-2
Specifications—450 And 780 Spreader	10-10-3
Bolt Torque Chart	10-10-5
Tightening O-Ring Fittings	10-10-6
Tightening Flare Type Tube Fittings	10-10-6
Tightening Pipe Thread Fittings	10-10-7
Tightening Flare Type Hose Fittings	10-10-7
GROUP 15—Lubricants	10-15-1
GROUP 20—Serial Numbers	10-20-1

SAFETY AND YOU

This is the safety-alert symbol. When you see this symbol on the machine or in this manual, be alert to the potential for personal injury.



AB6;T81389 053;TMSAFE 071085

PREPARE FOR EMERGENCIES

Be prepared if a fire starts.

Keep a first aid kit and fire extinguishers handy.

Keep emergency numbers for doctors, ambulance service, hospital, and fire department near your telephone.



AB6;TS186 053;FIRE2 080785

STAY CLEAR OF PTO

Entanglement in rotating driveline can cause serious injury or death.

Keep tractor master shield and driveline shields in place at all times except for special applications as directed in the implement operator's manual.

Wear fairly tight fitting clothing. Stop the engine and be sure PTO driveline is stopped before making adjustments, connections, or cleaning out PTO driven equipment.



AB6;TS198 053;PTO 280186

WEAR PROTECTIVE CLOTHING

Wear fairly tight clothing. and safety equipment.

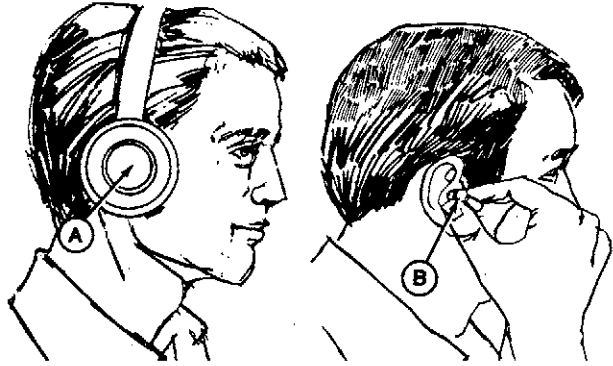


AB6;TS184 053;WEAR2 080785

PROTECT AGAINST NOISE

Prolonged exposure to loud noise can cause impairment or loss of hearing.

Wear a suitable hearing protective device such as earmuffs (A) or earplugs (B) to protect against objectionable or uncomfortable loud noises.

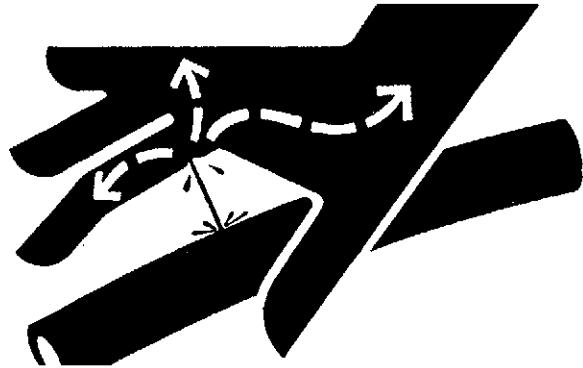


AB6;X7662 053;NOISE 270886

AVOID HIGH-PRESSURE FLUIDS

Escaping fluid under pressure can penetrate the skin causing serious injury. Relieve pressure before disconnecting hydraulic or other lines. Tighten all connections before applying pressure. Keep hands and body away from pinholes and nozzles which eject fluids under high pressure. Use a piece of cardboard or paper to search for leaks.

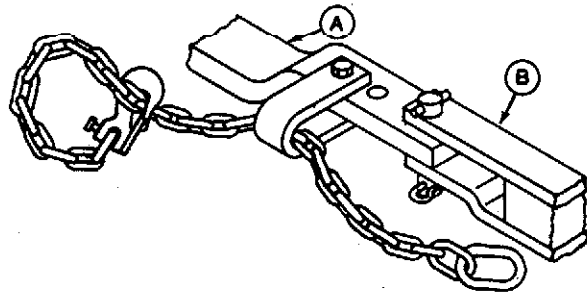
If ANY fluid is injected into the skin, it must be surgically removed within a few hours by a doctor familiar with this type injury or gangrene may result.



AB6;X9811 053;FLUID. 290186

USE A SAFETY CHAIN

A safety chain will help control drawn equipment (B) should it accidentally separate from the drawbar (A) while transporting. Using the appropriate adapter parts, attach the chain to the tractor drawbar support or other specified anchor location. Provide only enough slack in the chain to permit turning. See your John Deere dealer for a chain with a strength rating equal to or greater than the gross weight of the towed machine.



AB6;TS163 053;CHAIN. 290186

TRANSPORT SPREADER SAFELY

To reduce chance of personal injury, always tow spreader slowly enough to maintain control.

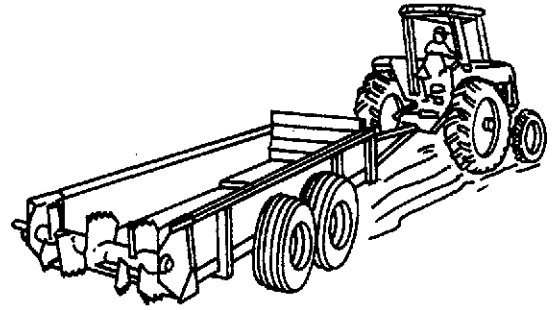
Use extra care when towing spreader at transport speeds.

Do not tow a loaded spreader that weighs more than twice the tractor weight.

To assure adequate braking performance and control, tow only with an agricultural tractor. Safe towing speed depends on weight of tractor and weight of towed load. (See Recommended Maximum Towing Speed in Transporting section of Spreader operator's manual.)

Tow only with an agricultural tractor. Refer to Spreader operator's manual for tractor minimum weight. Never exceed 32 km/h (20 mph).

Use accessory lights and devices for warning to operators of other vehicles.



8DA;W13247 W01;;12SY -G 110587

OPERATE SPREADER SAFELY

Refer to the Spreader operator's manual for operating instructions.

Do not exceed load capacity of the spreader. (See Transporting section of Spreader operator's manual.)

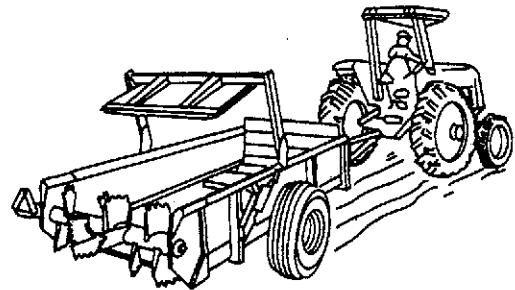
Never enter a spreader while in operation.

Reduce tractor ground speed when turning or traveling on rough terrain.

Avoid traveling over loose fill, rocks, ditches or holes.

When working on inclines or slopes, travel uphill or downhill. Keep tractor in gear when traveling downhill.

Drive slowly through gates and doors.

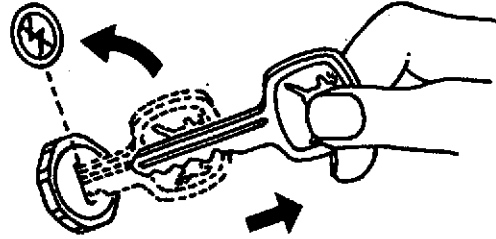


8DA;W12404 W01;;11SY -D 110587

SERVICE SPREADER SAFELY

Help prevent personal injury caused by unexpected movement of the machine. If spreader is connected to tractor, disengage PTO, engage parking brake and/or place transmission in "PARK", shut off engine, and remove key. If spreader is detached, block wheels and use safety stands.

Replace all shields after lubricating or servicing.



8DA;W9765 W01;;125Y -K 050387

KEEP SERVICE AREA CLEAN

Keep the service area clean and dry; wet or oily floors are slippery. Wet spots can be dangerous when working with electrical equipment.

Be sure all electrical outlets and tools are properly grounded.

Use adequate light for the job at hand.



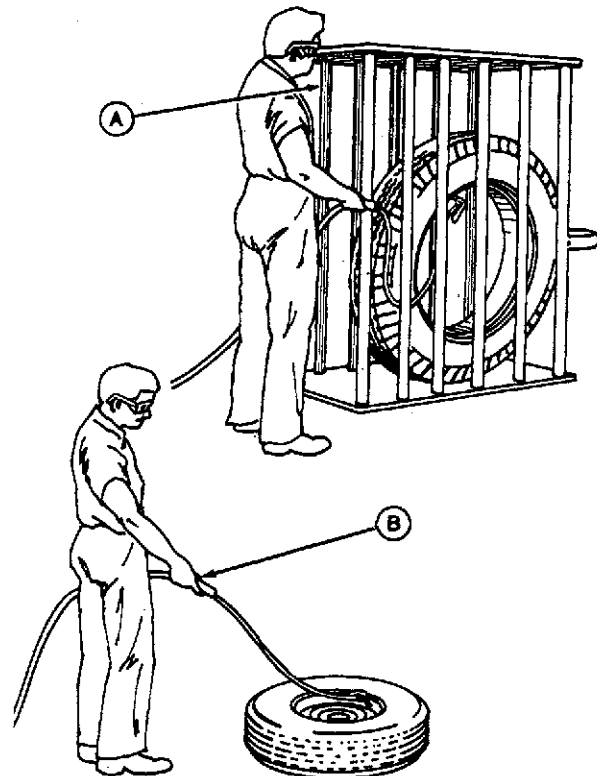
5EA;W9966 W02;;1005 -E 150187

SERVICE TIRES SAFELY

Failure to follow proper procedures when mounting a tire on a wheel or rim can produce an explosion which may result in serious injury or death. Do not attempt to mount a tire unless you have the proper equipment and experience to perform the job. Have it done by your John Deere dealer or a qualified tire repair service.

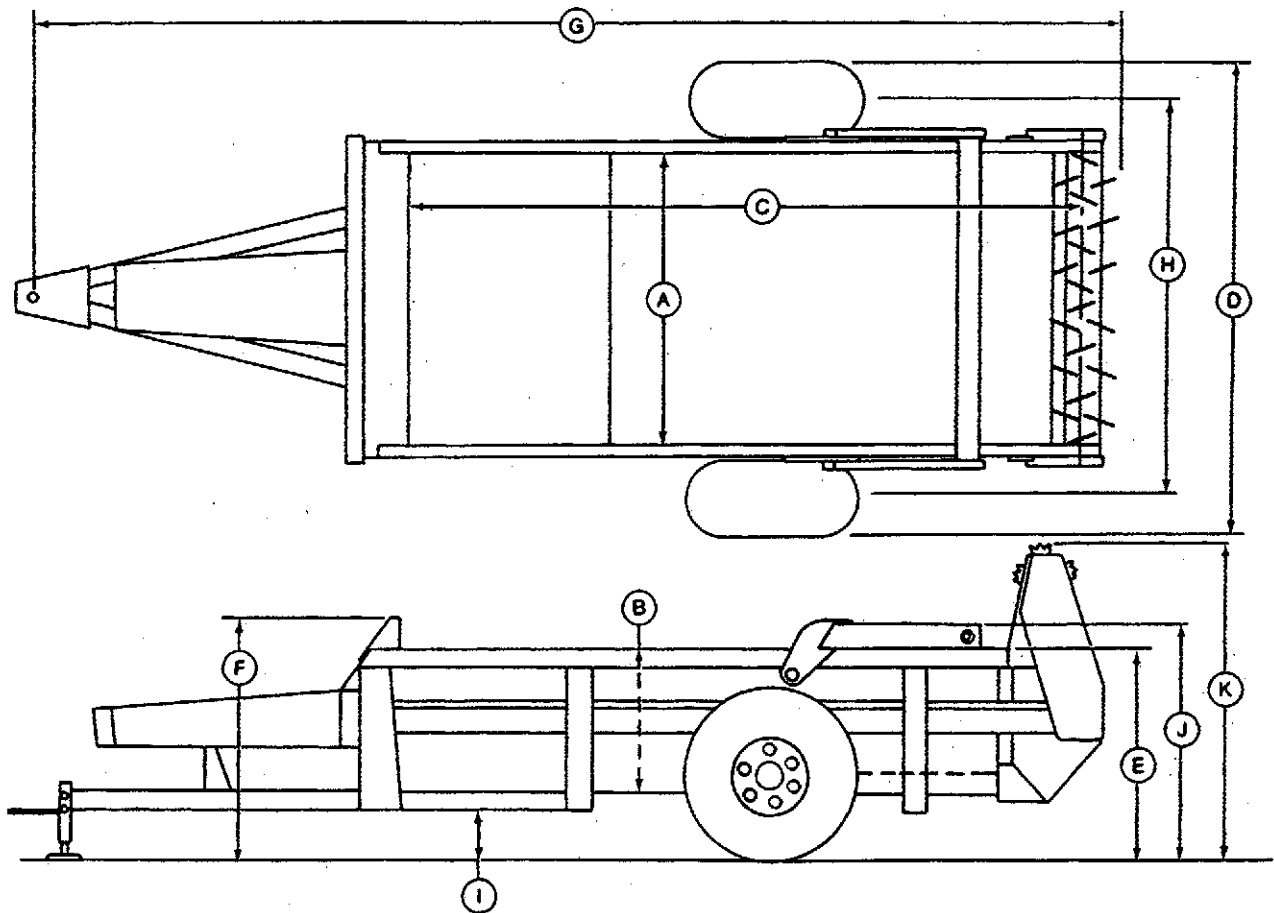
When sealing tire beads on rims, never exceed 35 psi (241 kPa) (2.4 bar) or maximum inflation pressures specified by tire manufacturers for mounting tires. Inflation beyond this maximum pressure may break the bead, or even the rim, with dangerous explosive force. If both beads are not seated when the maximum recommended pressure is reached, deflate, reposition tire, relubricate bead and reinflate.

- A—Use a Safety Cage if Available.
- B—Do Not Stand Over Tire. Use a Clip-on Chuck and Extension Hose.



AB6;TS123 053;TIRE 160486

DIMENSIONS-450 SPREADER



- A—1570 mm (61.8 in.)
- B—698 mm (27.5 in.)
- C—3870 mm (152.4 in.)
- D—2400 mm (94.5 in.) *
- E—1165 mm (45.9 in.) *
- F—1320 mm (52.0 in.) *

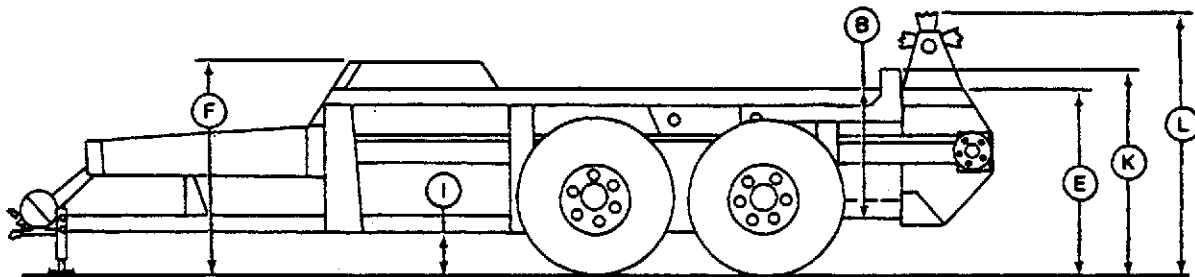
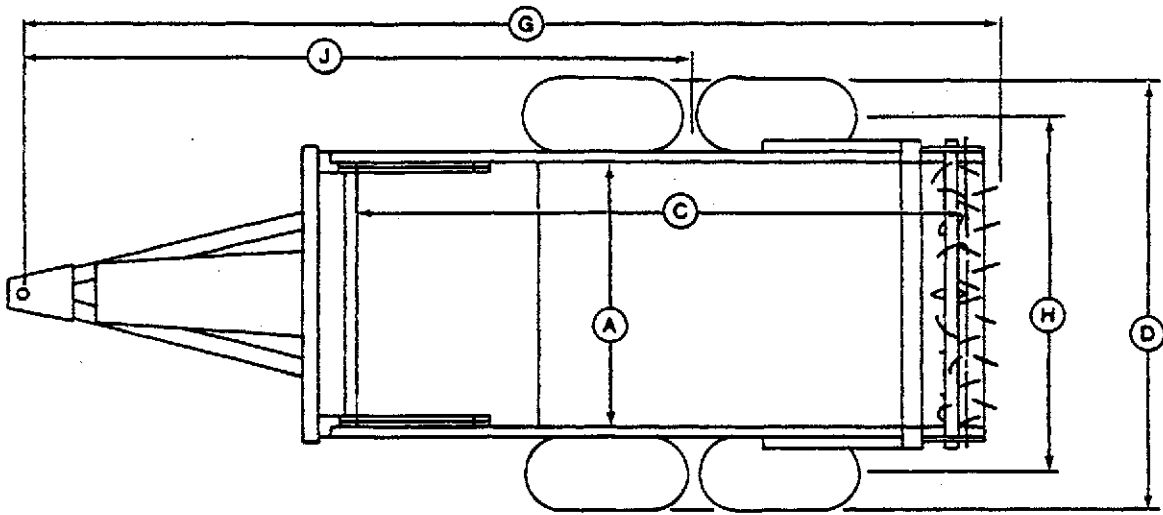
- G—5870 mm (231.1 in.)
- H—2050 mm (80.7 in.)
- I—350 mm (13.8 in.) *
- J—1300 mm (51.2 in.) *
- K—1679 mm (66.1 in.) *

* For spreader equipped with 10.00 x 20 recapped truck tires.

Specifications and design subject to change without notice

8DA;W12518 W02;1010 -A 200487

DIMENSIONS-780 SPREADER



A—1810 mm	(71.3 in.)
B—770 mm	(30.3 in.)
C—4900 mm	(192.9 in.) *
D—2732 mm	(107.6 in.) *
E—1311 mm	(51.6 in.) *
F—1459 mm	(57.4 in.) *

G—7420 mm	(292.1 in.)
H—2450 mm	(96.5 in.)
I—280 mm	(11.0 in.) *
J—4850 mm	(191.0 in.)
K—1422 mm	(56.0 in.) *
L—1814 mm	(71.4 in.) *

* For spreader equipped with 10.00 x 20 recapped truck tires.

Specifications and design subject to change without notice

SPECIFICATIONS-450 AND 780 SPREADER

Spreader Model	450	780
Tractor Size (Minimum)	45 kW (60 hp) PTO	76 kW (100 hp) PTO
Weight		
Spreader Less Wheels, Tires, Endgate	1079 kg (2379 lb)	1924 kg (4242 lb)
8 x 20 Wheels	46 kg (102 lb)	92 kg (203 lb)
Wheels and 10.00 x 20 Recapped Truck Tires	127 kg (280 lb)	254 kg (560 lb)
Wheels and 16.5L x 16.1 Tires	127 kg (280 lb)	262 kg (578 lb)
Hydraulic Endgate	123 kg (272 lb)	212 kg (462 lb)
Upper Beater	70 kg (154 lb)	100 kg (220 lb)
Endpan	64 kg (142 lb)	63 kg (139 lb)
Load Capacity	5897 kg (13000 lb)	9526 kg (21000 lb)
Volume Capacity		
Struck Level	4.0 m ³ (141 cu. ft.)	6.3 m ³ (222 cu. ft.)
Heaped Load (Single Beater)	6.1 m ³ (217 cu. ft.)	9.4 m ³ (332 cu. ft.)
(Upper Beater)	8.1 m ³ (286 cu. ft.)	12.0 m ³ (424 cu. ft.)
Beater Speed		
Upper	255 rpm	294 rpm
Lower	356 rpm	337 rpm
Unloading Speed	0-4.6 m/min (0-15 ft/min) Infinitely Variable	0-5 m/min (0-16 ft/min) Infinitely Variable
Driveline	Shielded 540 rpm Shielded 1000 rpm	Powr-Gard 540 rpm Shielded 1000 rpm (With Constant Velocity Front Joint)
Attachments	Control For Fender or Rops Mount	Control For Fender or Rops Mount
	Open Center Valve With Control	Open Center Valve With Control
	Upper Beater Endgate Endpan Warning Light Kit Splash Guards Cold Weather Conditions Kit	Upper Beater Endgate Endpan Warning Light Kit Drawbar Support Cold Weather Conditions Kit

Specifications and design subject to change without notice

W02;1010 -C 110587

General Specifications/Specifications-450 And 780 Spreader

Driveline	Shielded 540 rpm Shielded 1000 rpm	Powr-Gard 540 rpm Shielded 1000 rpm (With Constant Velocity Front Joint)
Attachments	Control For Fender or Rops Mount Open Center Valve With Control Upper Beater Endgate Endpan Warning Light Kit Splash Guards Cold Weather Conditions Kit	Control For Fender or Rops Mount Open Center Valve With Control Upper Beater Endgate Endpan Warning Light Kit Drawbar Support Cold Weather Conditions Kit

Specifications and design subject to change without notice

W02;;1010 -AA 150187

BUY NOW

**Then Instant Download
the Complete Manual
Thank you very much!**