

INTRODUCTION

GENERAL

See Figure 1, Figure 2, Figure 3, Figure 4, Figure 5, Figure 6, and Figure 7.

This section describes the parts of the frame. Low lift walkie and low lift walkie rider models have a main frame weldment and a fork frame weldment. High lift walkie models have a main frame weldment and a mast weldment. The T5XT model consists of a single frame weldment. There is no disassembly for the frame or fork weldments as each weldment is a single piece.

On the low lift walkie and low lift walkie rider models, the lifting mechanism parts join the two weldments together. To separate the two weldments, see the section **LIFTING MECHANISM, 4000 SRM 510** for W40XT and W45XT, **LIFTING MECHANISM, 4000 SRM 281** for W40-60XL and W40CL and **LIFTING MECHANISM, 4000 SRM 536** for W/B/C60-80XT, CA60-80XT/XT2, W60Z, and B0Z.

This section includes the description and repair procedures for standard and optional casters.

DESCRIPTION

The main frame has mounts for: the lifting mechanism, the electrical system parts, the hydraulic pump assembly, and the master drive unit (MDU). There is also a mount for the casters (if equipped). The mounting holes for the casters are in the main frame weldment. Repair procedures for major systems/parts that fasten to the main frame are found in separate SRM sections.

Models with a fork frame weldment have mounts for the lifting mechanism. The fork frame weldment is fastened to the main frame by the links of the lifting mechanism. The forks lift to raise the load. The battery end of the weldment is lifted by the cylinder. The fork tips are lifted the same amount by linkage operating the load wheel assemblies.

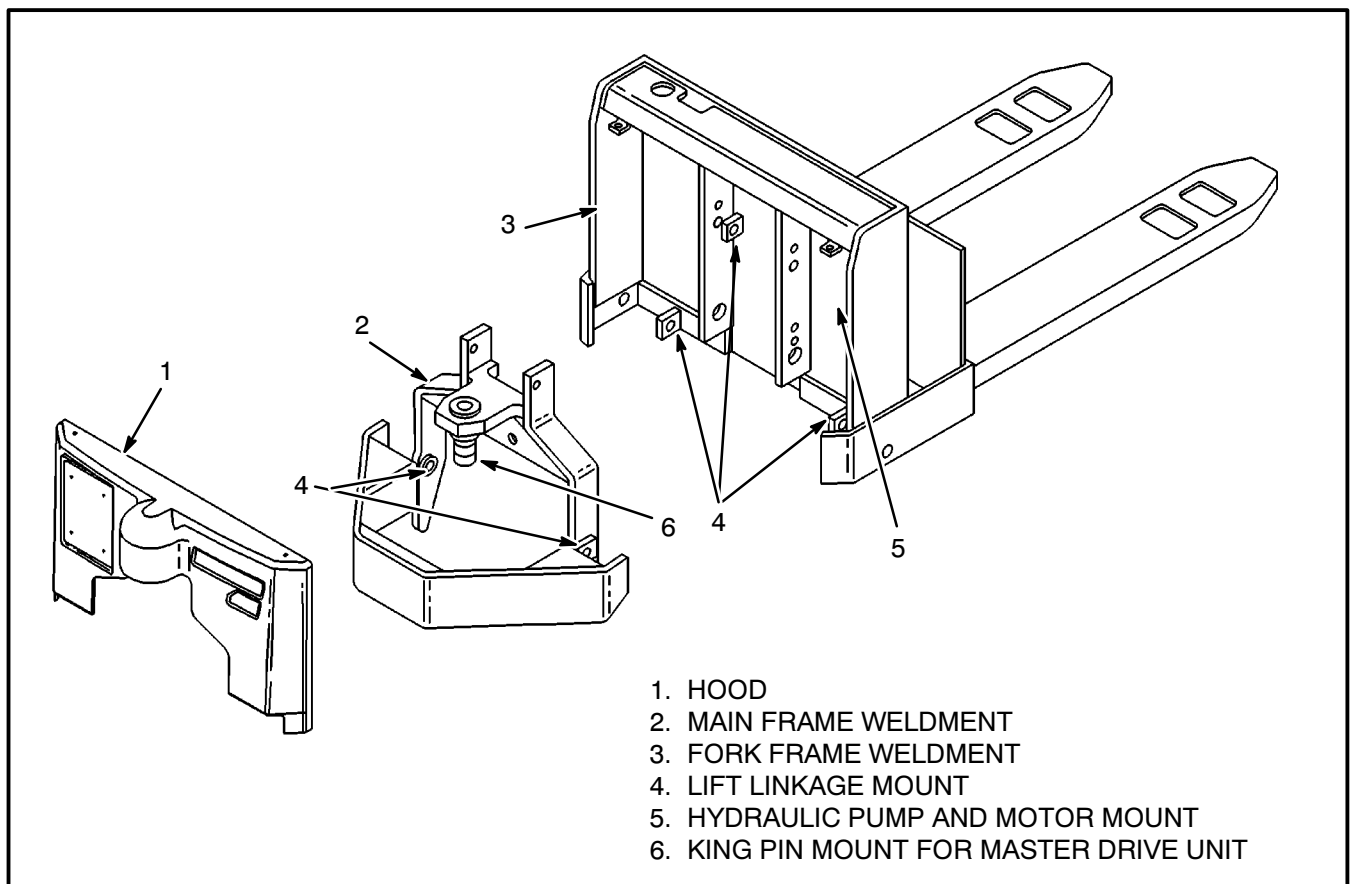


FIGURE 1 - FRAME WELDMENT – W40XT, W45XT

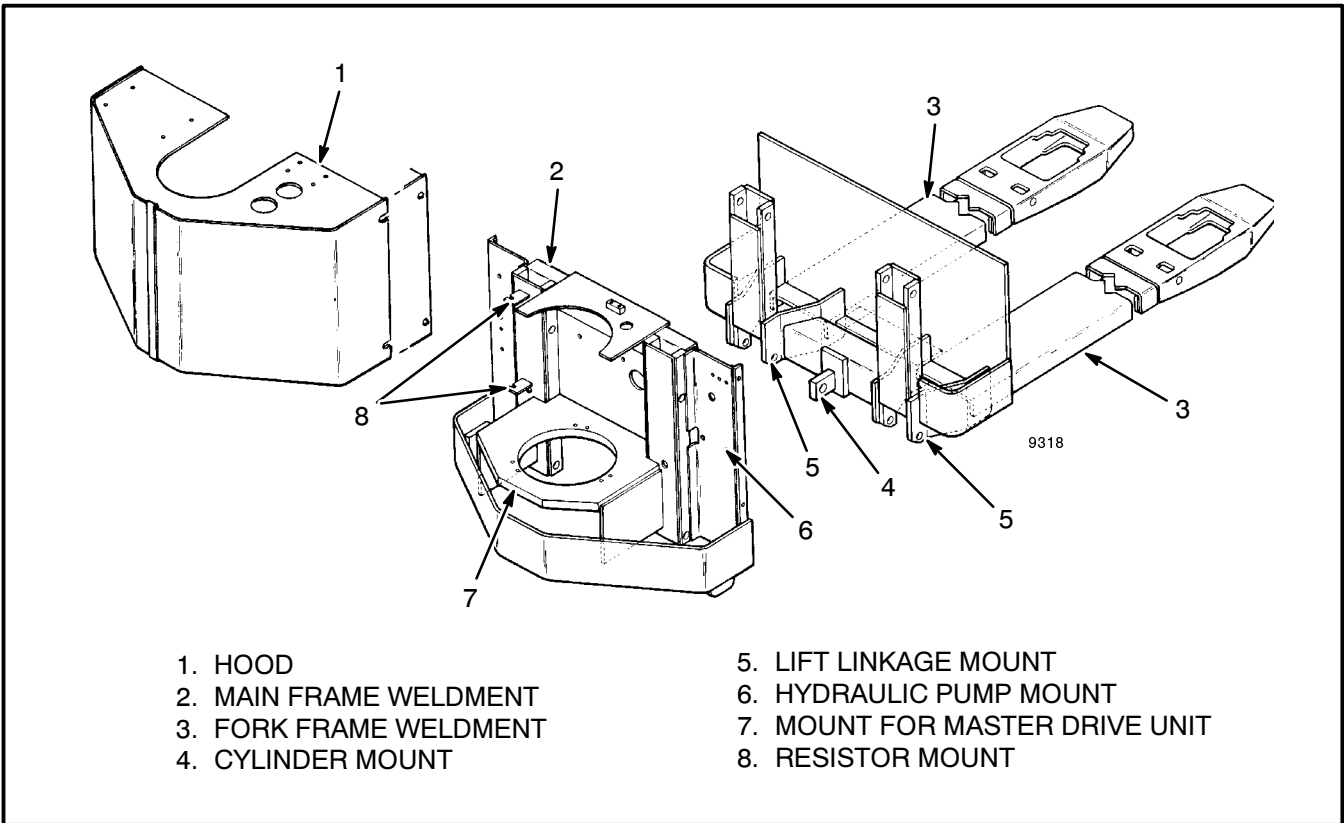


FIGURE 2 - FRAME WELDMENT - W40-60XL, W40CL

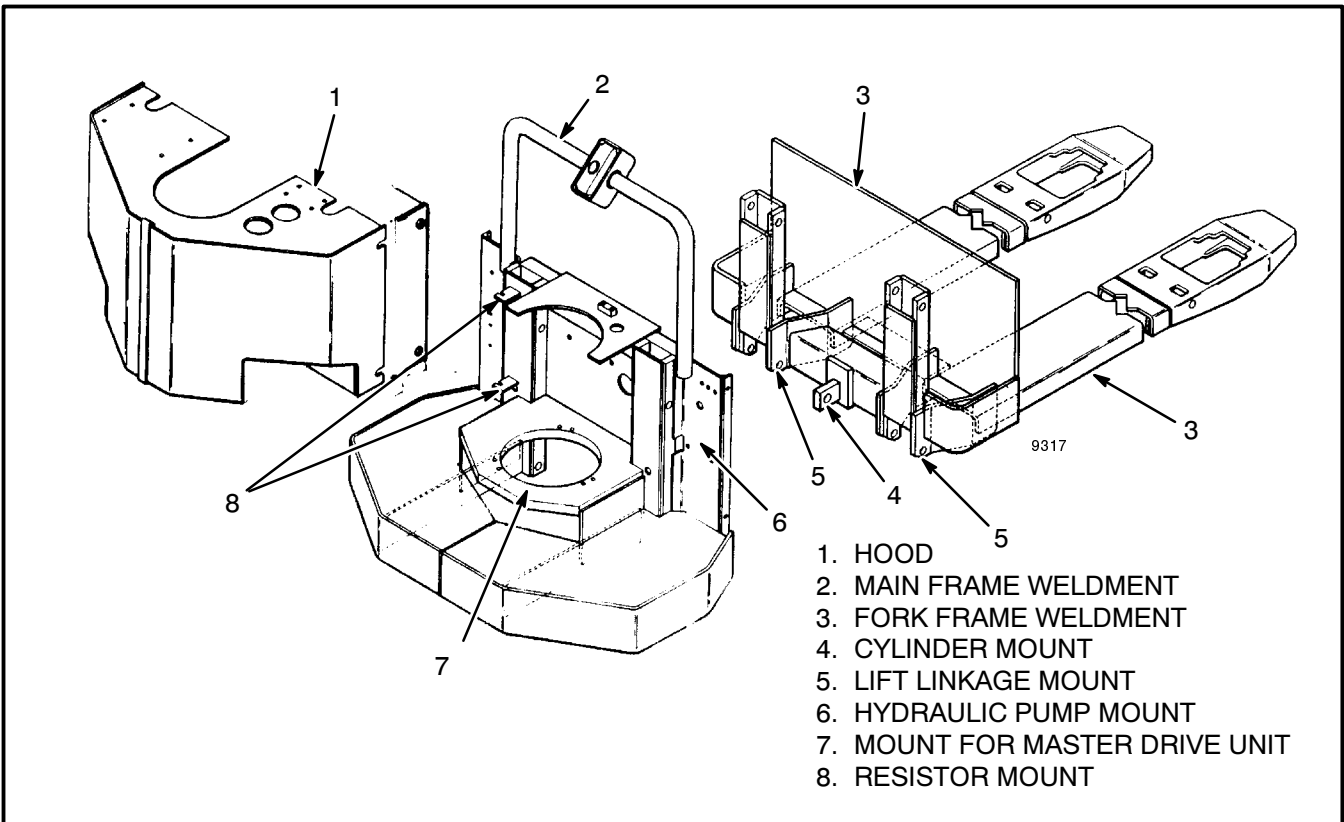


FIGURE 3 - FRAME WELDMENT - B40-60XL, B40CL

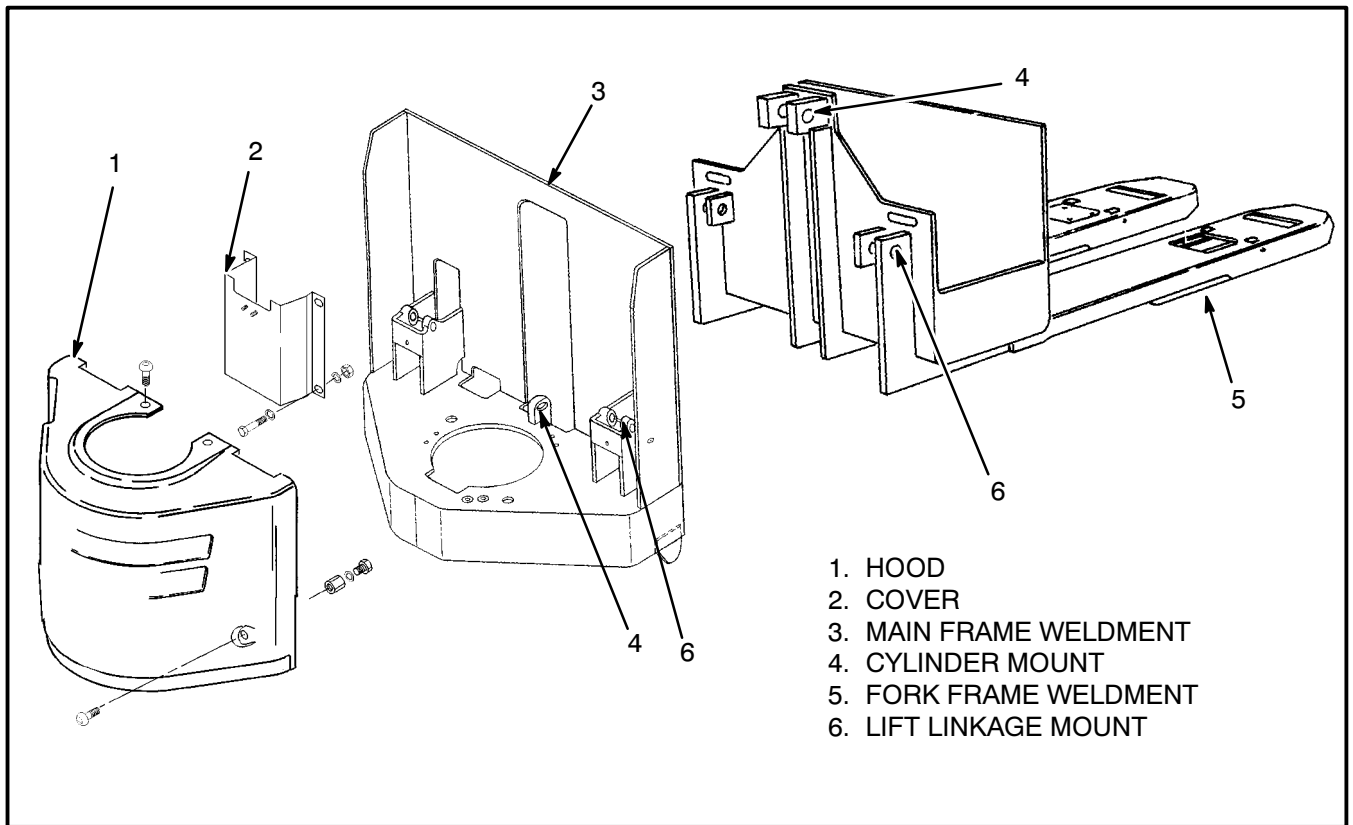


FIGURE 4 - FRAME WELDMENT - W60-80XT

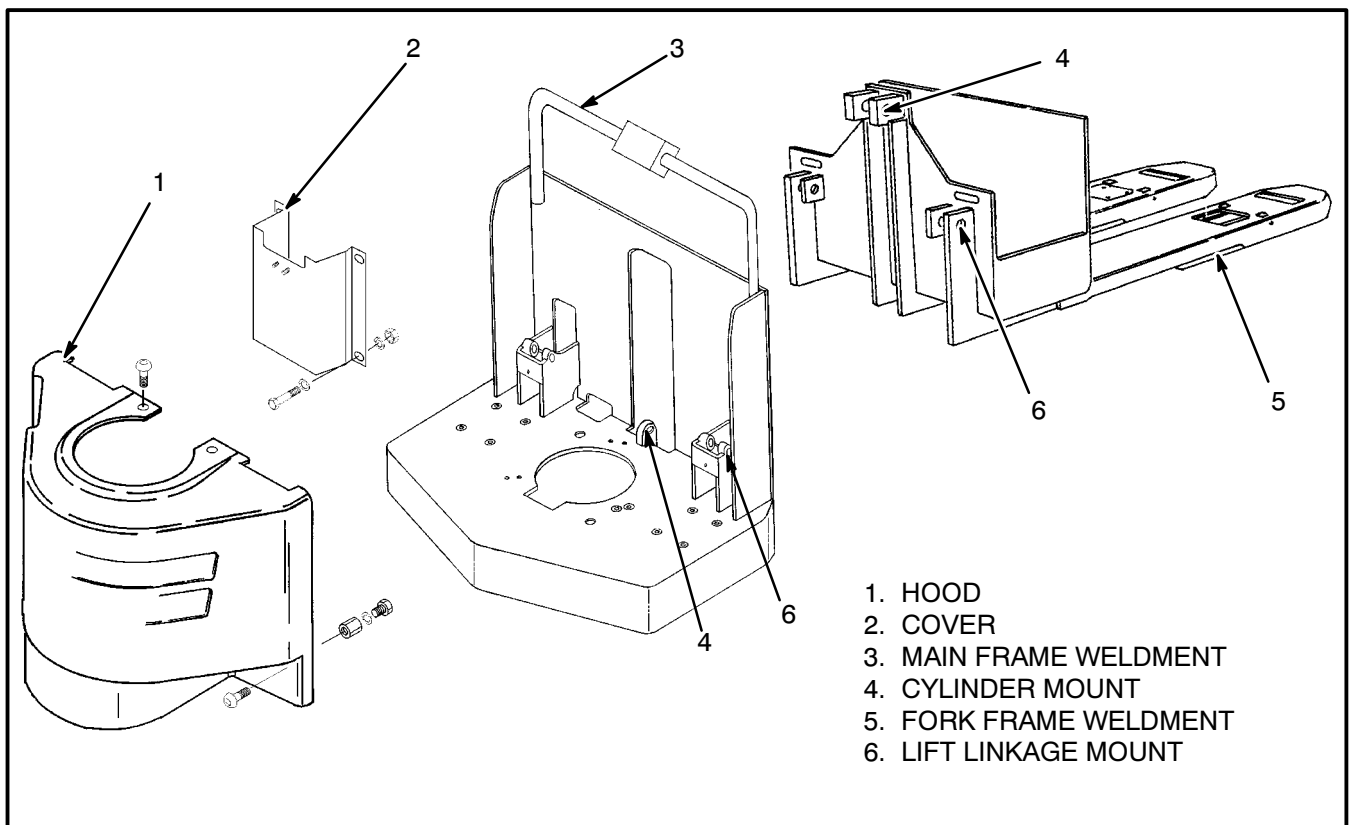


FIGURE 5 - FRAME WELDMENT - B60-80XT

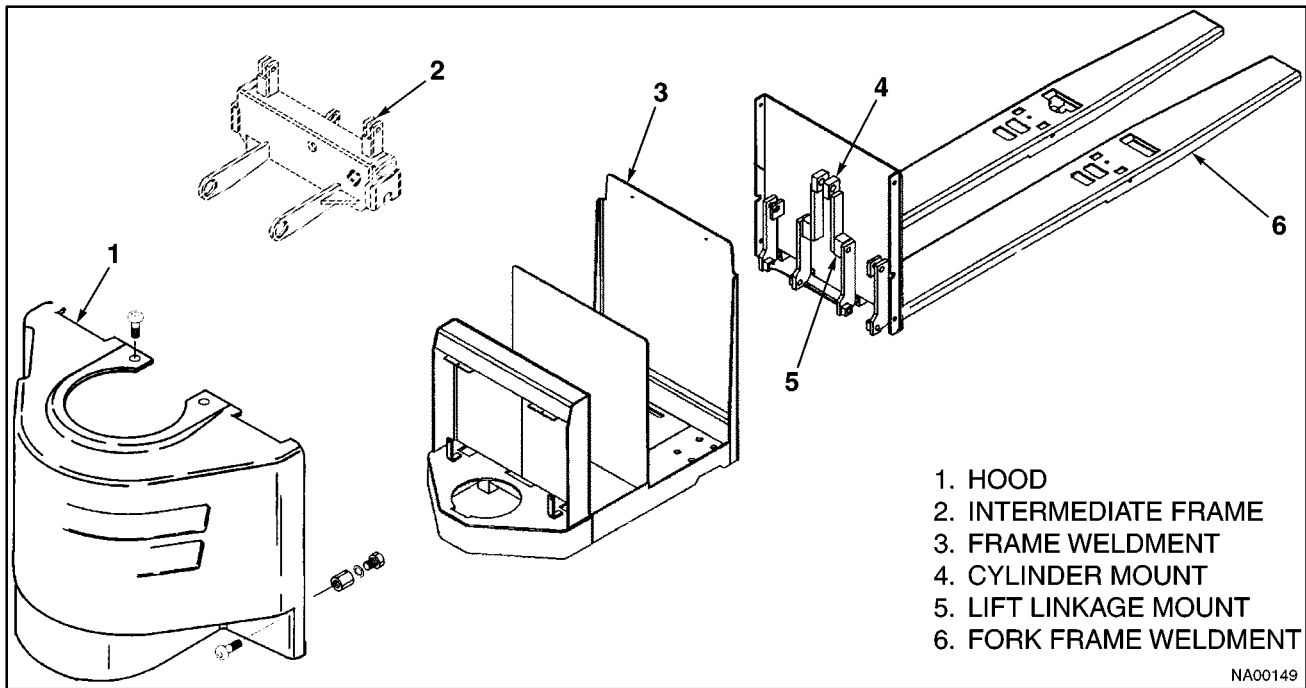


FIGURE 6 - FRAME WELDMENT – CA60-80XT

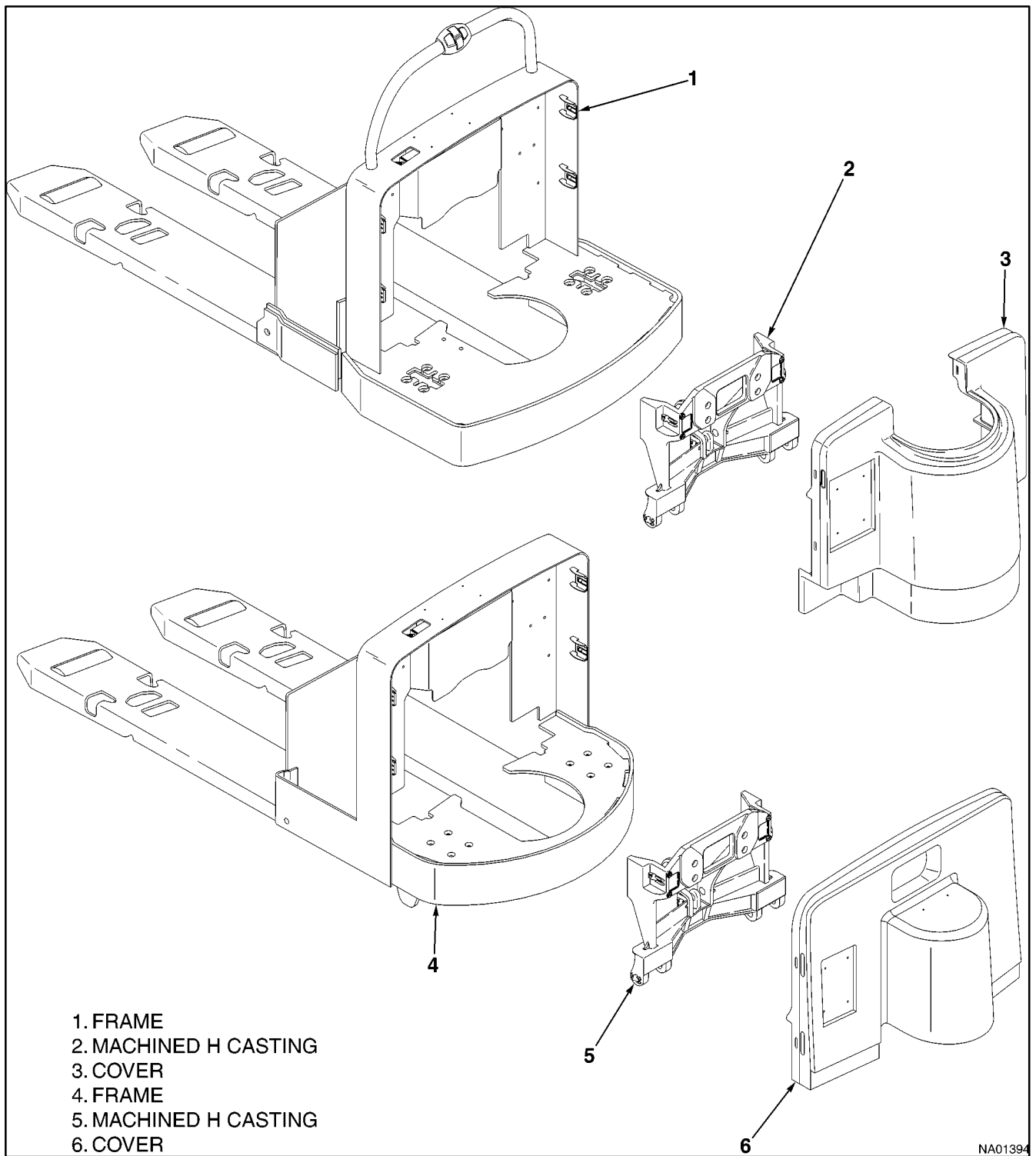


FIGURE 7 - FRAME WELDMENT – B60Z, W 60Z

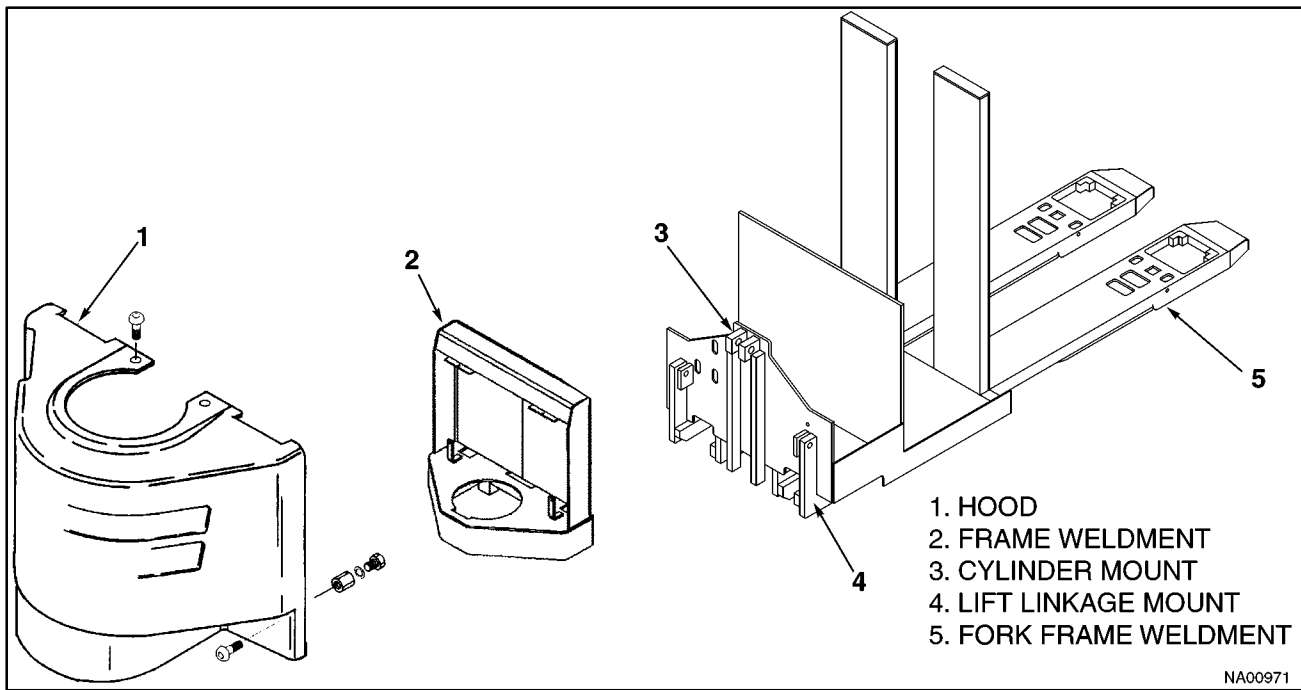


FIGURE 8 - FRAME WELDMENT – C60-80XT2

REPAIR

FRAME REMOVAL AND DISASSEMBLY

⚠ WARNING

Forklift truck frames and components may have polyurethane paint. Welding, burning, or other heat sufficient to cause thermal decomposition of the paint, may release isocyanates. These chemicals are allergic sensitizers to the skin and respiratory tract and overexposure may occur without odor warning. Should work be performed, utilize good industrial hygiene practices including removal of all paint (prime and finish coats) to the metal around the area to be welded, local ventilation, and/or supplied-air respiratory protection.

Most repairs can be done by removing the necessary systems or parts. See the section of the Service Manual for the system or part to be removed. If the two frame weldments must be separated, see the section **LIFTING MECHANISM 4000 SRM 534** for W/B/C60-80XT CA60-80XT/XT2, W60Z, and B60Z **LIFTING MECHANISM 4000 SRM 510** for W40XT and W45XT and **LIFTING MECHANISM 4000 SRM 4** for W/B40CL and W/B4060XL.

Removal and disassembly of the standard or optional casters are found in this section. Removal and installation instructions for the optional bumpers are also in this section. See Figure 9 through Figure 11.

CASTER REMOVAL AND DISASSEMBLY - W/B40CL AND W/B40-60XL, SEE FIGURE 9 AND FIGURE 10

1. Loosen or remove the capscrews that fasten the MDU compartment cover to the frame. Remove the cover.
2. Place the wheel of the MDU on a tapered block approximately 50 mm (2 inches) thick.

NOTE: Most repairs of the casters can be done without removing the caster from the main frame. If the casters must be removed, follow Step 3.

3. Remove the eight screws and nuts that fasten the two casters to the main frame. Remove the casters.

NOTE: Step 4 is for the disassembly of the W40-60XL caster. Step 5 is for the disassembly of the B40-60XL or B40CL spring caster.

4. Disassemble each of the W40-60XL casters as far as necessary to replace damaged or worn parts.

a. Remove the axle nut and axle. Remove the

wheel.

b. Remove the bearing from the wheel.

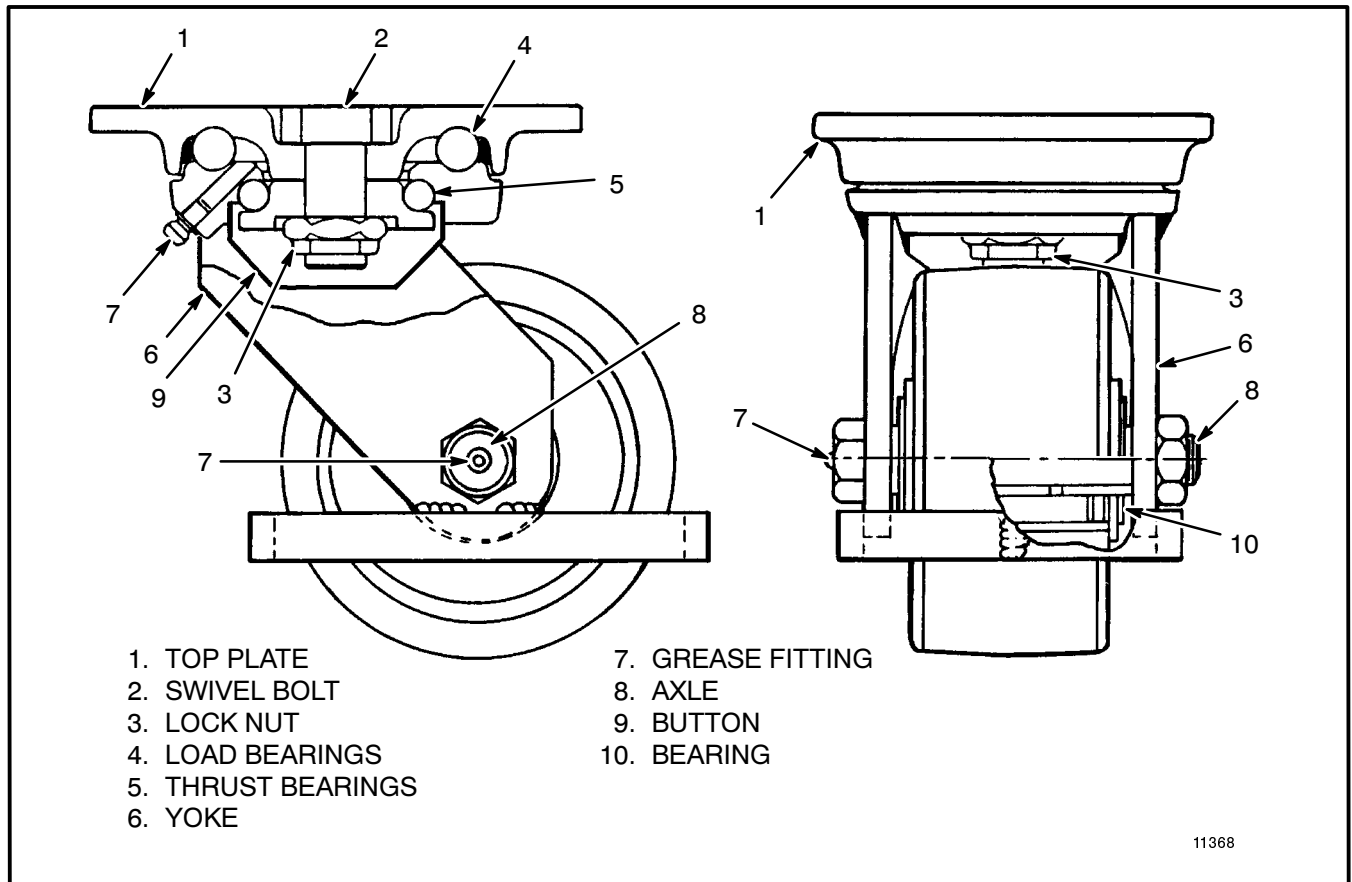


FIGURE 9 - OPTIONAL CASTERS – W40-60XL

5. Disassemble each B40-60XL or B40CL caster as far as necessary to replace the damaged or worn parts as follows:

a. Remove the nut(s) on each rod end for the spring(s).

b. Remove the wheel axle, wheel, seal, washer, and bearing.

c. Remove the nuts and washers that fasten the pivot arms to the yoke. Remove the pivot arms, rod

end(s), pivot bearings, and spring(s). Remove the spring axle and rod end(s).

d. Remove the seal cap (B40-60XL only) and the lock nut that fastens the yoke to the top plate.

e. Remove the yoke, button, thrust bearing balls, and load bearing balls. Remove the swivel bolt from the top plate.

6. Remove the eight screws and nuts that fasten the two bumpers to the main frame. Remove the bumpers and spacers. See Figure 11.

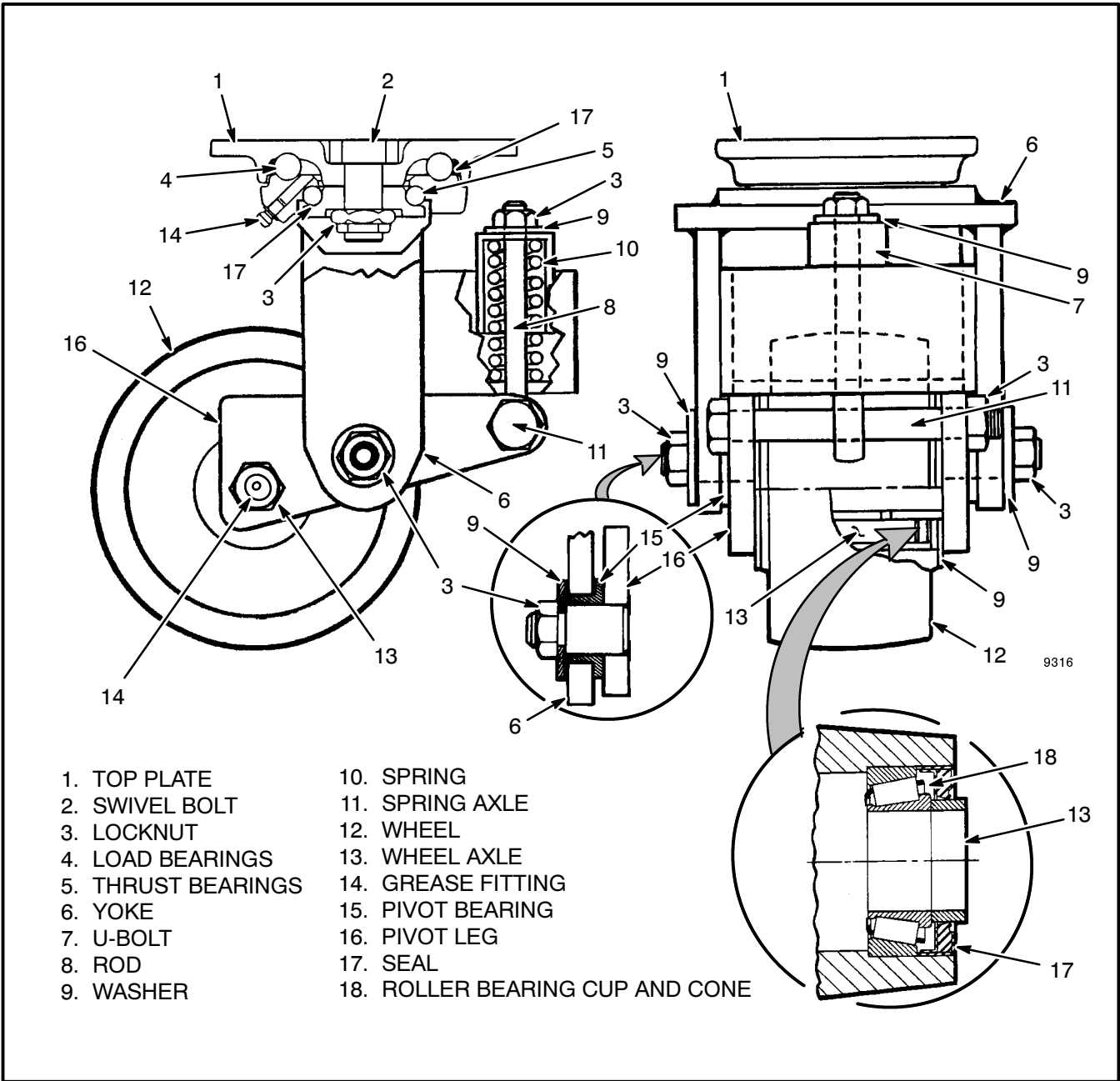


FIGURE 10 - OPTIONAL CASTERS – B40-60XL, B40CL

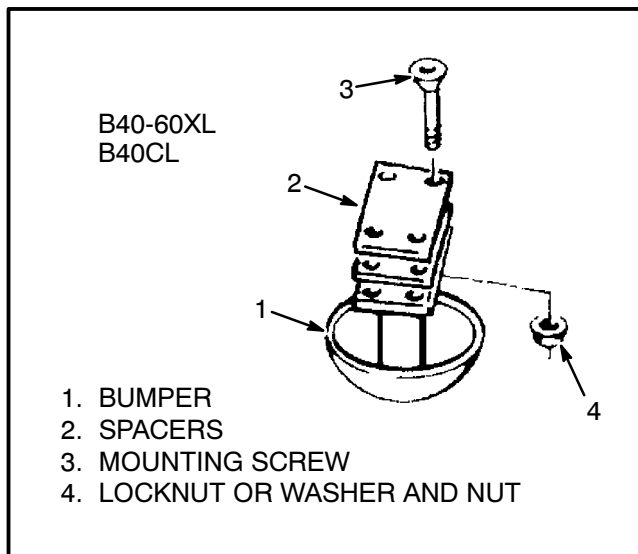


FIGURE 11 - OPTIONAL BUMPER

CASTER REMOVAL AND DISASSEMBLY - W40XT, W45XT AND W/B/C60-80XT SEE FIGURE 12

⚠ WARNING

Put blocks under both forks and on both sides of the drive tire. The blocks must prevent the lift truck from falling and causing personal injury or damage.

1. Raise the drive wheel off the floor. Block the lift truck. See HOW TO PUT A LIFT TRUCK ON BLOCKS, in the section PERIODIC MAINTENANCE, 8000 SRM 627. Disconnect the battery.
2. Remove the four countersunk screws and nuts retaining the caster and spacer to the frame. Remove the caster.
3. Repeat the same procedure for the other caster, if necessary.
4. To disassemble the caster assembly remove the locknut retaining the caster wheel on the caster wheel axle. Drive the caster wheel axle out of the arms and remove the caster wheel.
5. Remove the locknut retaining the spacer between the arms. Remove the capscrew, washers, and spacer.
6. Remove the locknuts retaining the spacers and springs. Remove the spacers, springs, and capscrews.

7. Remove one of the E-Rings retaining the pin and bushings between the arms. Disassemble the pin, bushings, and arms.

8. Remove one of the E-Rings retaining the pin and bushings to the yoke. Disassemble the pin and bushings from the yoke.

CASTER INSTALLATION - W40XT, W45XT AND W/B/C60-80XT SEE FIGURE 12

1. Align the caster and spacer with the holes in the frame and install the four countersunk screws and nuts. Tighten the nuts to 115 N•m (85 lbf ft) torque.
2. Repeat step 1 to install the other caster, if necessary.
3. Remove the blocks from under the lift truck and lower the lift truck to the floor. Test the operation of the lift truck prior to returning the lift truck to service.

CASTER WHEEL REPLACEMENT - W40XT, W45XT, W/B/C60-80XT/XT2, B60Z AND W60Z SEE FIGURE 12, AND 14

NOTE: The caster does not have to be removed from the lift truck frame to replace the caster wheel or the caster wheel axle.

⚠ WARNING

Put blocks under both forks and on both sides of the drive tire. The blocks must prevent the lift truck from falling and causing personal injury or damage.

1. Raise the drive wheel off the floor. Block the lift truck. See HOW TO PUT A LIFT TRUCK ON BLOCKS, in the section PERIODIC MAINTENANCE, 8000 SRM 627. Disconnect the battery.
2. Remove the locknut retaining the caster wheel on the caster wheel axle. Drive the caster wheel axle out of the arms and remove the caster wheel.
3. Align the new caster wheel between both arms and install the caster wheel axle. Install the nut on the caster wheel axle. Tighten the nuts to 34-47 N•m (25-35 lbf ft) torque.
4. Remove the blocks from under the lift truck and lower the lift truck to the floor. Test the operation of the lift truck prior to returning the lift truck to service.

- 1. SCREW
- 2. SPACER
- 3. YOKE ASSEMBLY
- 4. NUT
- 5. BOLT WITH NUT
- 6. BOLT WITH NUT
- 7. PIN
- 8. PIN
- 9. BUSHING
- 10. SNAP RING
- 11. WASHER
- 12. AXLE
- 13. ARM
- 14. WHEEL
- 15. SPACER
- 16. SPACER
- 17. SPRING
- 18. BUSHING

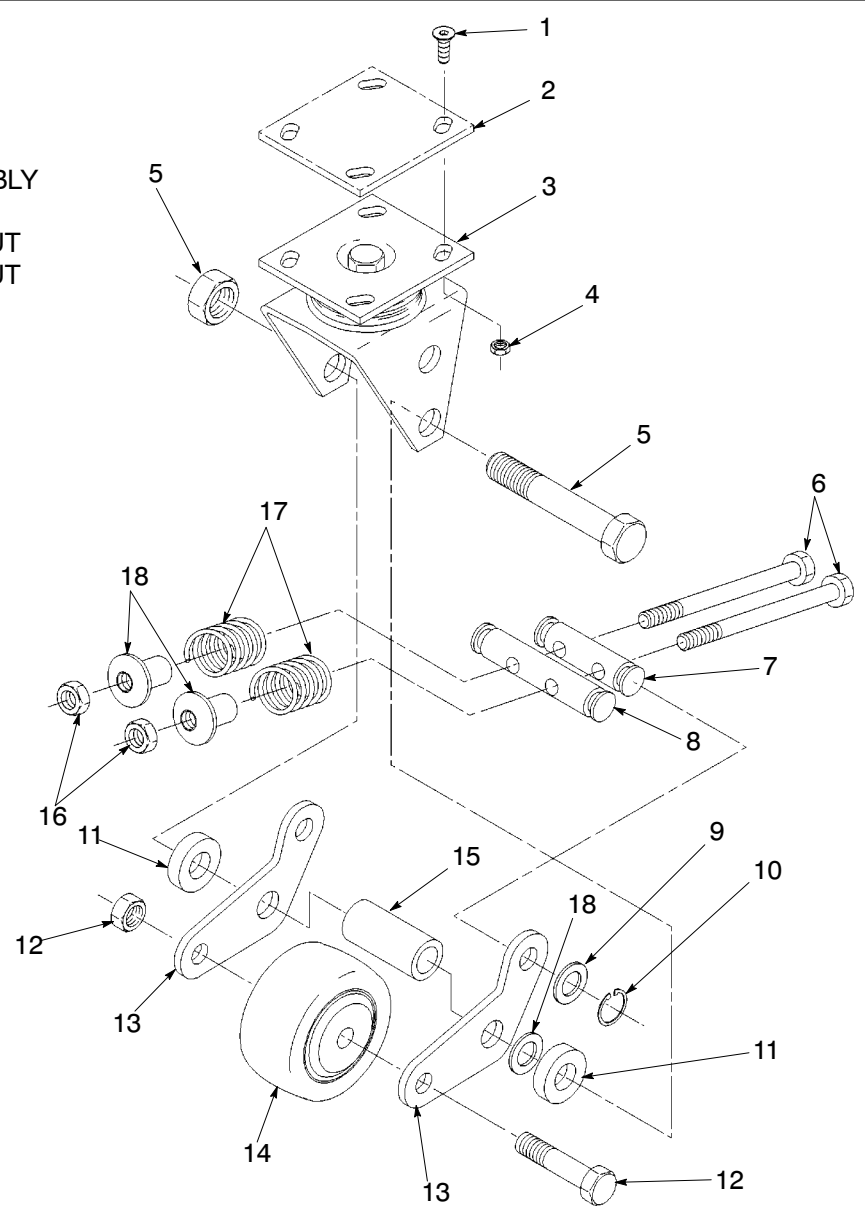


FIGURE 12 - CASTER - W40XT, W45XT, W/B/C60-80XT

(More Content includes: Brake system, Capacities, and specifications, Frame, Hydraulic, System, Industrial battery, Main control, Valve, Mast repair, Fasteners, Schematics diagrams, Steering axle, Steering system, Wire harness repair And more)

[Click Here](#)

**Get all the content
after purchase**

**Thank you very
much.**